

# DATA SHEET

Premium Efficiency Motor: **MTSP-002-3BD12**

**60 Hz**

Document Generated: 22-Sep-2021

Document ID:

Customer:

## MOTOR INFORMATION

HP	2
RPM	1200
Phase	3
Frequency	60
Voltage	230/460
Frame Size	184TC
Enclosure	TEFC
Degree of Protection	IP69K
Service Factor	1.15
Poles	6
Full Load Speed	1175
Insulation Class	F
Temp Rise	80°C
NEMA Code Letter	L
Duty Cycle	S1
Slip	2.08%
NEMA Design	B
Moment of Inertia	0.61 lb.ft.^2
Locked Rotor Time (Hot)	12 seconds
Sound Pressure Level	57 dB(A)
Number of Starts	12
Max Ambient Temperature	40° C
Max Elevation	1000 m.a.s.l (3300 f.a.s.l)
Mounting	F1
Rotation	Bidirectional
Area of Classification	Div.2 Class I, Gr. A,B,C&D T2B
Inverter Rating	10:1 CT/20:1 VT
Standard	NEMA MG1, UL1004
Approvals	CSA,UL,CE

## EFFICIENCY/POWER FACTOR

LOAD	EFF	P. F.
100%	88.5 %	0.71
75%	82.0 %	0.65
50%	77.0 %	0.57

## TORQUE

FULL LOAD	LRT	BDT
8.8 lb.ft.	255 %	270 %

## AMPERAGE INFORMATION

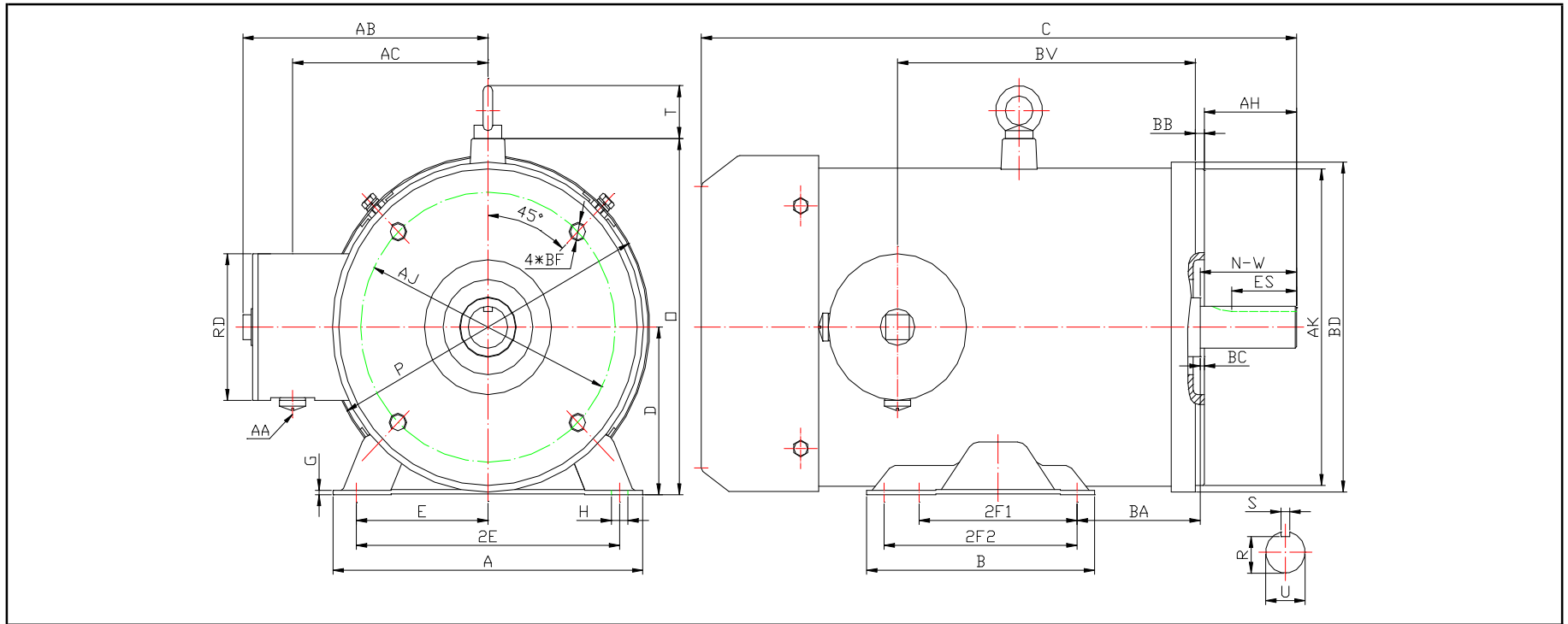
	230V	460V
Full Load Amps	6.1	3.05
Locked Rotor Amps	50	25
No Load Current	3.8	1.9
Usable at 208V	7	

## BEARING INFORMATION

DE Bearing	6308 2RS
ODE Bearing	6306 2RS
Grease Type	Mobil Polyrex EM
DE Regreasing Interval	-- Hours
ODE Regreasing Interval	-- Hours
Grease Quantity	--

## ADDITIONAL DATA

F2 Suitable	No
Shaft Material	304 Stainless Steel
Connection Diagram	9 Lead 2Y/Y
Approximate Weight	98 lbs.



**DIMENSIONS - INCHES**

MOUNTING					A	B	C	D	G	T	P	O	BC	AB
E	2F1	2F2	H	BA										
3.75	4.5	5.5	0.71*0.47	3.5	8.8	6.5	17.00	4.5	0.118	--	9.25	6.98	0.12	7

SHAFT & KEY					
S	ES	R	N-W	U	AH
0.25	1.78	0.986	2.75	1.125	2.62

TERMINAL BOX				
AA	AB	AC	RD	BV
1/2	7	5.55	3.95	8.5

FLANGE				
AK	BD	AJ	BF	BB
8.5	8.85	7.25	(4*)/2-13	0.25

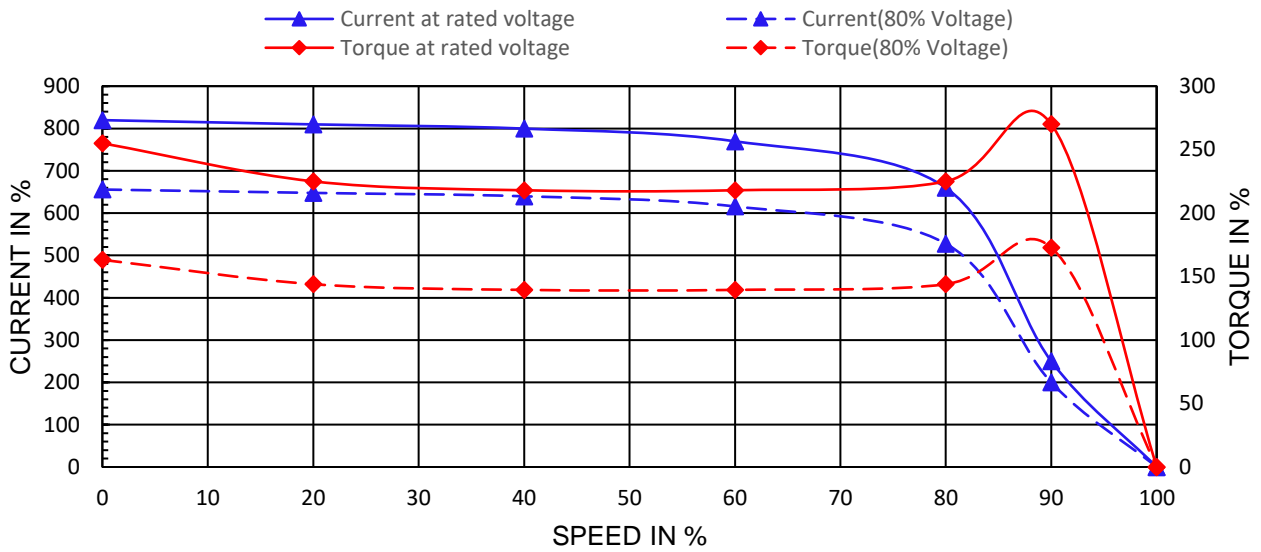
# PERFORMANCE CURVES

Premium Efficiency Motor: **MTSP-002-3BD12**

Document Generated: 22-Sep-2021	Customer:
Document ID:	

Motor Type	MTS		FL Speed	1175	
Output Rating (HP)	2		LRT (%FLT)	255	460 volt FLA 3.05
Full Load Torque	8.8	lb.ft	BDT (%FLT)	270	230 volt FLA 6.1
Rotor Wk^2	0.61	lb-ft^2			

SPEED VS TORQUE & CURRENT CURVE



OUTPUT VS EFF., P.F. & CURRENT CURVE

