

Accessories

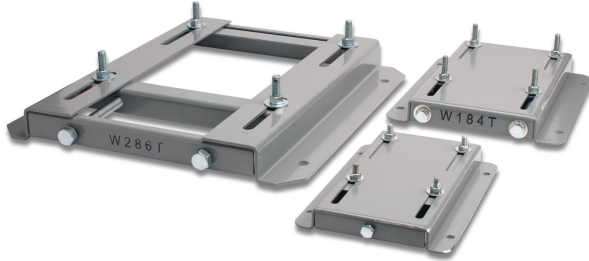


TABLE OF CONTENTS

<i>STABLE Slide Bases</i>	4-2
<i>Slide Base Selection</i>	4-2
<i>Slide Base Dimensions</i>	4-2
<i>Replacement Accessories</i>	4-3

STABLE SLIDE BASES

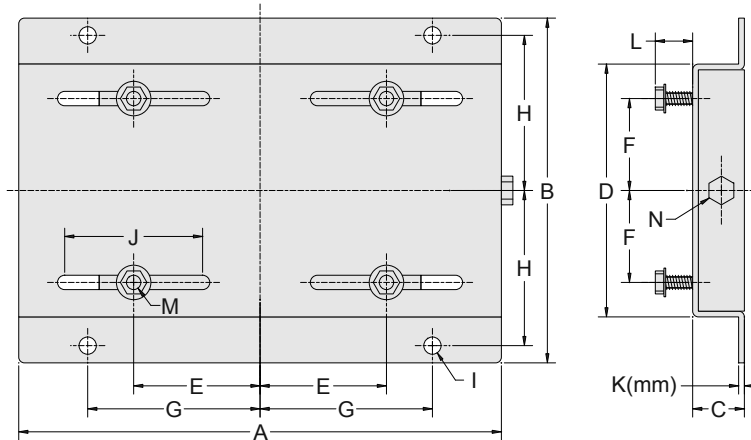
AutomationDirect offers STABLE motor slide bases for mounting NEMA motor frame sizes from 56 to 449. These heavy-duty steel bases are primed with an oven-baked primer ready for painting. The motor mounting bolts are welded to the exact motor foot pattern to prevent the bolts from spinning. The motor position is adjustable along the long axis.



SLIDE BASE SELECTION

Motor Slide Bases			
Part Number	Fits Frame Type	Shipping Weight (lb)	IronHorse Model
MTA-BASE-W56	56	3.5	MTPM-xxx-1L18 MTPM-xxx-1M18

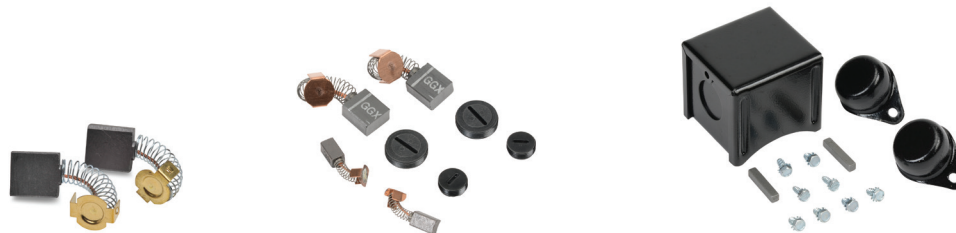
SLIDE BASE DIMENSIONS



W56 - W145T Motor Slide Base Dimensions

Dimensions [inches, except as noted] – STABLE Motor Slide Bases							
	A	B	C	D	E	F	G
MTA-BASE-W56	10-5/8	6-1/2	1-1/8	4-1/2	2-7/16	1-1/2	3-13/16
	H	I	J	K (mm)	L	M	N
	2-7/8	3/8	3	2 mm	7/8	5/16 x 1	3/8 x 4

REPLACEMENT ACCESSORIES



Replacement brushes and spare/replacement parts can be ordered at www.automationdirect.com.

REPLACEMENT DC MOTOR BRUSHES

All small-frame IronHorse® DC motors ship with brushes installed, and the brushes should be replaced as needed. (Minimum brush length is 6mm.)

Brushes for 56C-frame motors should be changed after every 2500 hours of use. Each 56C-frame motor ships with brushes installed, plus one extra set of spare/replacement brushes.

Match the replacement brush part number against the motor horsepower carefully to insure you order the correct brushes for your motor. When replacing brushes, pay special attention that the correct brush is inserted into the motor (especially if you have multiple motor sizes at your facility). Verify that the width of the brush you remove matches the width of the replacement brush. DO NOT install smaller brushes into a larger motor.

See “Chapter 3: Maintenance and Troubleshooting” for brush replacement procedure.

DC Motor Replacement Brushes					
Part Number	Description	Motor Type	Rated Voltage	Motor HP	Brush Materials
MTPM-BRUSH-1	Brushes with springs (one set of 2)	IronHorse MTPM	90 VDC	0.33–1.5	Resin class Graphite
MTPM-BRUSH-2			180 VDC	2	
MTPM-BRUSH-3			90 VDC	1.5	
MTPM-BRUSH-4	Brushes with springs and caps (one set of 2)		12/24 VDC	1/4 @ 24VDC	Copper Graphite
MTPM-BRUSH-5			180VDC	1/10–1/6 @ 24VDC	
MTPM-BRUSH-6			90VDC	1/8–1/7 @ 90VDC	Carbon Graphite
MTPM-BRUSH-7			180VDC	1/8–1/7 @ 180VDC	
			90VDC	1/31–1/19 @ 90VDC	
			180VDC	1/15 @ 180VDC	

All IronHorse DC motors ship with one set of brushes installed.
All IronHorse 56C-frame DC motors ship with one set of brushes installed and one extra set in the box.

SPARE/REPLACEMENT PARTS KIT FOR SMALL-FRAME DC MOTORS

Small-Frame DC Motors Spare Parts Kit		
Part Number	Description	For Motors MTPM-
MTGA-KIT-1	DC motor spare parts kit, for certain MTPM series permanent magnet DC motors as listed. Includes: two metal brush cap covers, one terminal box, one 1/8 (0.125 inch) shaft key, and one 3/16 (0.187 inch) shaft key.	P05-1L19, P13-1L19, P14-1L19; P17-1JK43, P25-1JK40, P25-1JK44; Pxx-1Mxx

[MTGA-KIT-1](#) includes spare/replacement parts only.
All parts in the kit are included with the applicable motors.

**BLANK
PAGE**