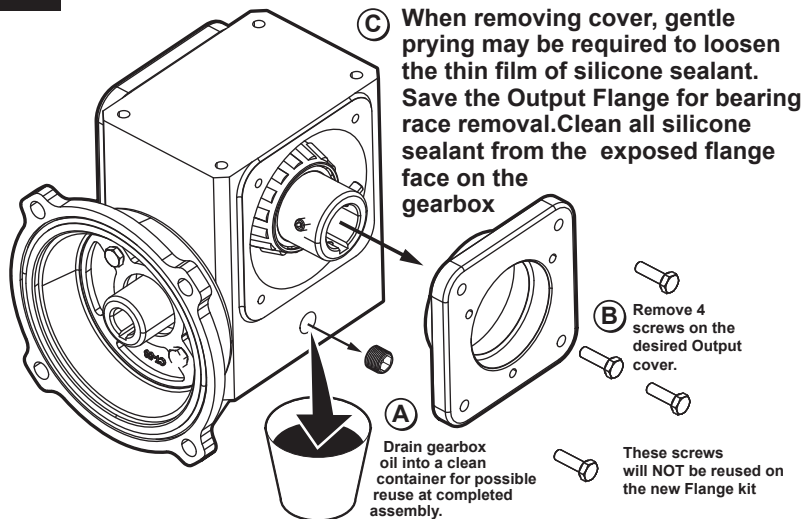


# How to Install the WGSS Flange



Copyright 2025, Automationdirect.com Incorporated/All Rights Reserved Worldwide

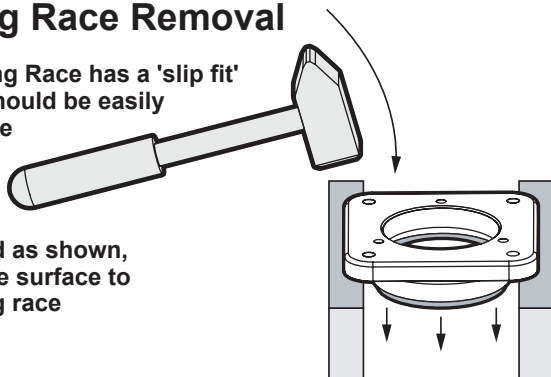
## 1 Remove the Output cover.



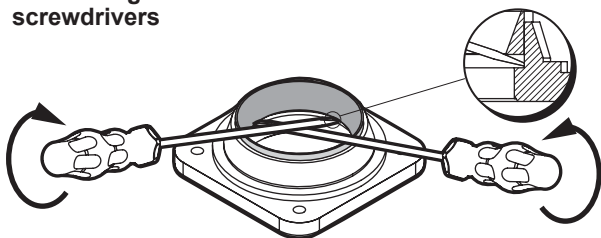
## 2 Bearing Race Removal

The Bearing Race has a 'slip fit' tolerance and should be easily removed with the following technique.

While supported as shown, tap on the flange surface to start the bearing race movement.

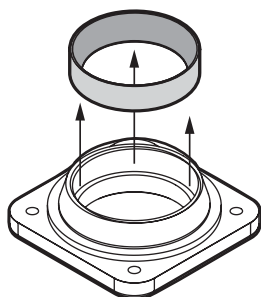


Flip flange over and continue to remove the bearing race with 2 flat blade screwdrivers

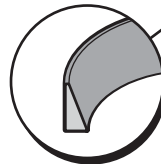


Save the Bearing Race for new Flange Kit.

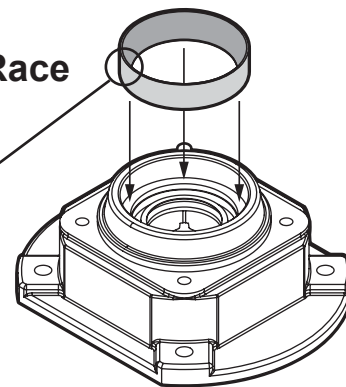
The existing Output Flange will NOT be needed.



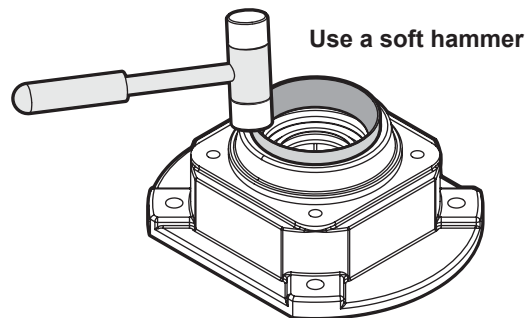
## 3 Insert Bearing Race into WGSS Flange



Note: Correct orientation of the conical bearing race.

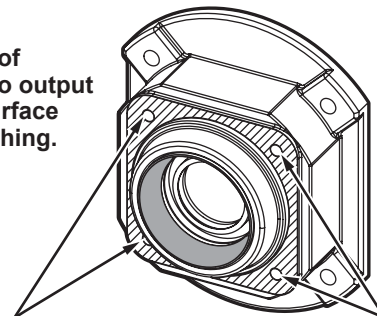


## 4 Seat Bearing



## 5 Apply Silicone Sealant

Apply a thin film of silicone sealant to output flange contact surface indicated by hatching.

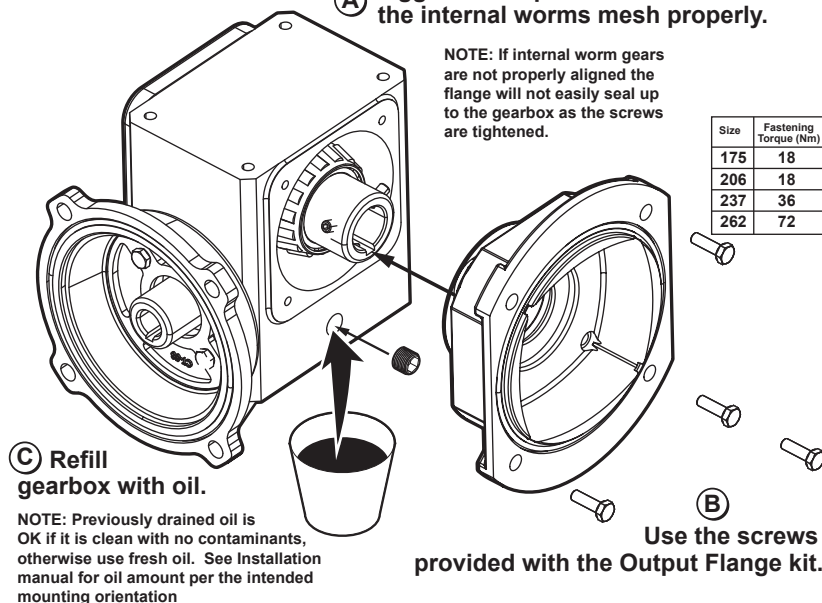


Keep silicone away from mounting holes

## 6 Attach Output Flange to gearbox.

**A** Jiggle the output shaft to ensure the internal worms mesh properly.

NOTE: If internal worm gears are not properly aligned the flange will not easily seal up to the gearbox as the screws are tightened.



Size	Fastening Torque (Nm)
175	18
206	18
237	36
262	72