

GSDA-MREV MANUAL REVERSING SWITCH

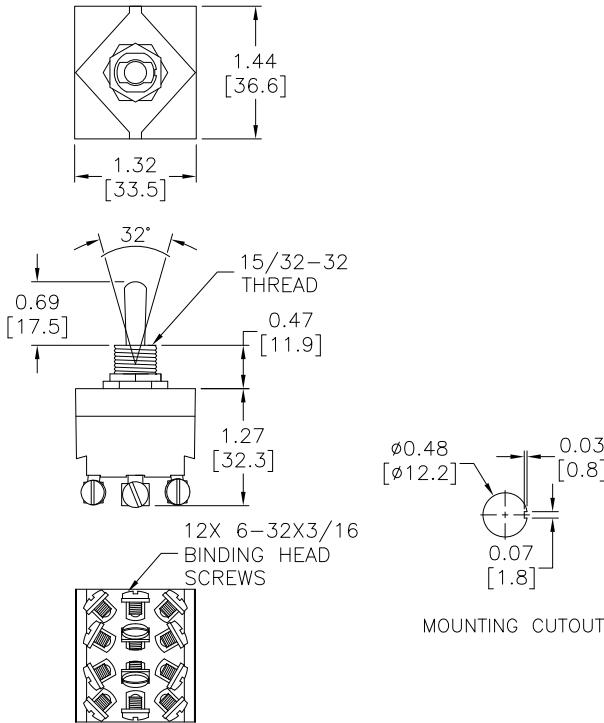
The GSDA-MREV Manual Reversing Switch is a 4PDT center-blocked manual switch that can be used with IronHorse GSD series DC drives to manually reverse the direction of a DC motor. When switched between the Forward and Reverse positions, the blocked center position causes a delay which protects the DC drive from any back-EMF voltage that may be on the reversed motor armature terminals. The center position is OFF/NEUTRAL, and is not connected to a wiring terminal.



USE THIS SWITCH WITH GSD DC DRIVES TO MANUALLY REVERSE A DC MOTOR WITHOUT DAMAGING THE DRIVE. REFER TO THE REVERSING WIRING DIAGRAM FOR THE APPLICABLE DC DRIVE FOR WIRING INFO.



DIMENSIONS (in [mm])



PIN-OUT DIAGRAMS

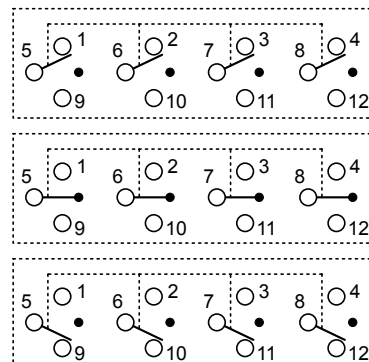


TERMINAL NUMBERS ARE FOR REFERENCE ONLY; ACTUAL TERMINALS ARE UNMARKED.

PIN #	DESCRIPTION
1.	VAC Input (L1), to the drive
2.	VAC Input (N) or (L2) if 230VAC, to the drive
3.	+ Armature connection on the drive
4.	- Armature connection on the drive
5.	AC1, 115VAC power
6.	AC2, 115VAC neutral or 115VAC, L2 if 230VAC
7.	Armature 1 connection on the motor
8.	Armature 2 connection on the motor
9.	Jumper to terminal 1 of the switch
10.	Jumper to terminal 2 of the switch
11.	Jumper to terminal 4 of the switch
12.	Jumper to terminal 3 of the switch

Fasteners

GSDA-MREV Fasteners			
Qty	Type	Purpose	Torque
2	M12 x 0.7 jam nuts	panel mounting the switch	as necessary per the panel material
12	6-32 x 3/16 in long slotted pan-head brass screws	wiring connections	7.9 lb-in [91 g·m]



Switch Position 1
 Direction 1 (forward or reverse)
 OFF (no wire terminal)
 Direction 2 (reverse or forward)

Switch Position 2 (OFF)
 Direction 1 (forward or reverse)
 OFF (no wire terminal)
 Direction 2 (reverse or forward)

Switch Position 3
 Direction 1 (forward or reverse)
 OFF (no wire terminal)
 Direction 2 (reverse or forward)