

# HWST - SERIES

BUL86687

REV. A

## ASSEMBLY INSTRUCTIONS FOR WALL MOUNT STAND OFF KITS

### Instructions

#### Option 1: Mount to cement wall with 1/2-13 anchor studs

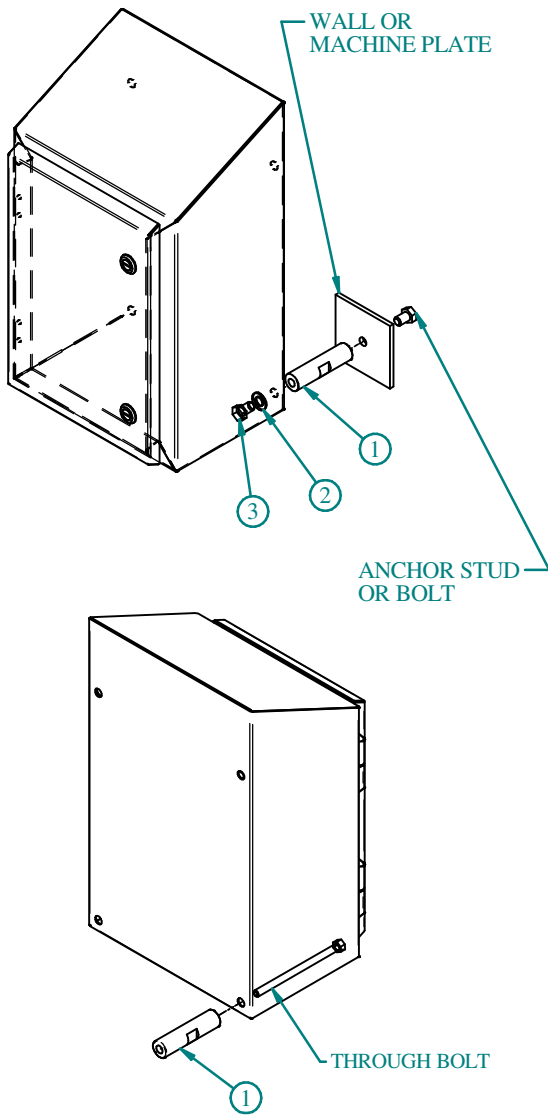
1. Mark positions of the four mounting holes in the position the enclosure is to be mounted.
2. Install anchor studs as per manufacturers specifications.
3. Thread the stand off (Item 1) onto the wall anchors and tighten down using machined flats and a wrench.
4. Bolt the enclosure to the stand offs (Item 1) using a sealing washer (Item 2) and the 1/2-13 bolt (Item 3) provided. Tighten until the sealing washer is flat.

#### Option 2: Mount to machine plate

1. Mark positions of the four mounting holes in the position the enclosure is to be mounted and drill holes.
2. Install stand offs (Item 1) to enclosure using the 1/2" sealing washer (Item 2) and the 1/2-13 bolt (Item 3) and tighten down until sealing washer is flat.
3. Attach enclosure with stand offs (Item 1) installed to plate using a 1/2-13 threaded fastner.

#### Option 3: Mount using a through bolt

1. Stand off is supplied with a through hole that is 3/8" in diameter, use appropriate hardware and sealing where required.



ITEM #	DESCRIPTION	QTY
1	STAND OFF	4
2	1/2" SEALING WASHER	4
3	1/2-13 BOLT	4

