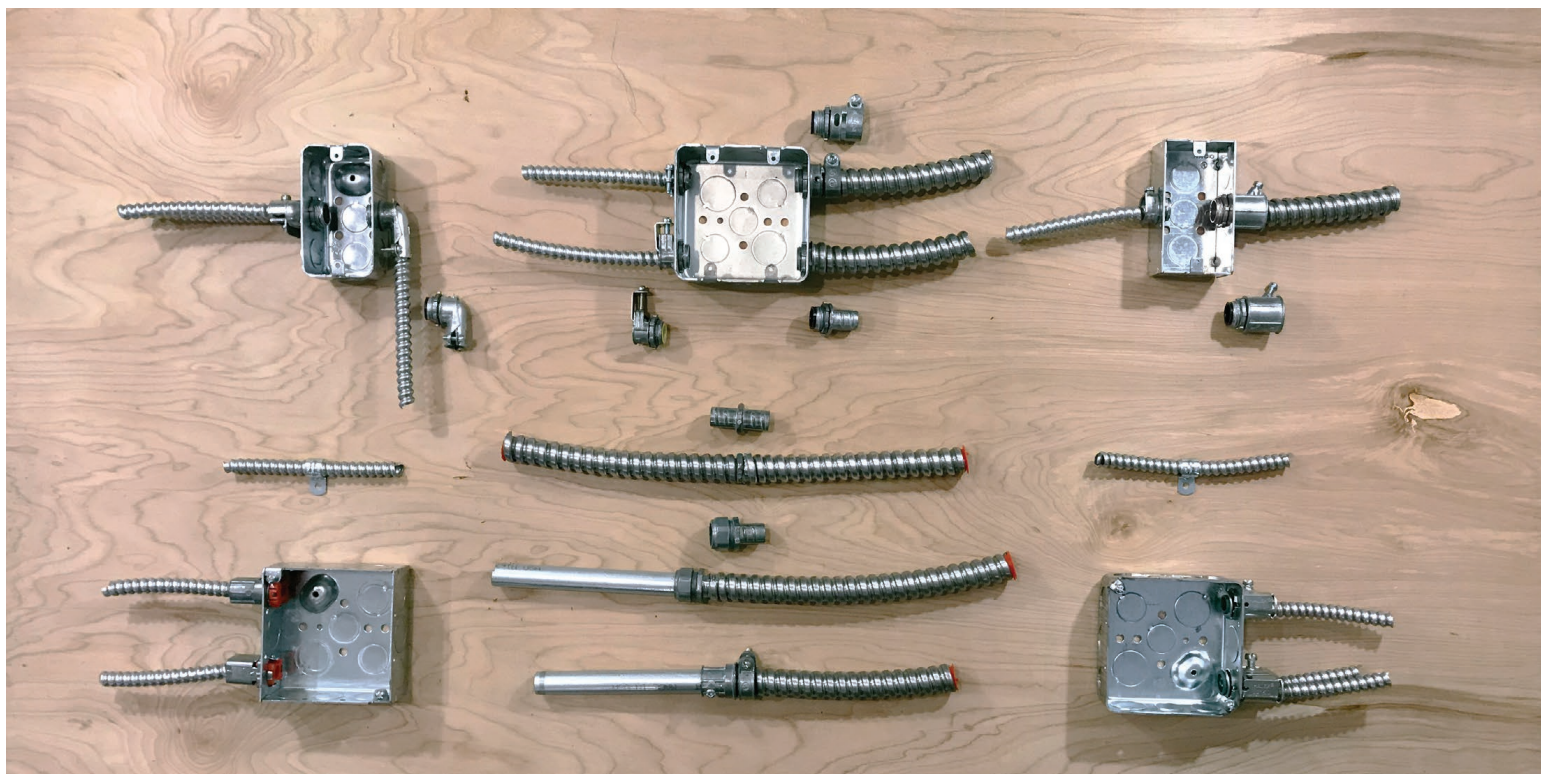




# FLEX



## Flexible Conduit Fittings (FLEX)

**Flexible conduit (AC and MC) comes pre-wired and (FMC) hollow.**

Halex offers Flex fittings, from 3/8" (1/2" knockouts) up to 4" in select parts.

Labor saving fittings are also available in MC Snap-In (single and duplex) as well as AC/MC Snap Connectors.

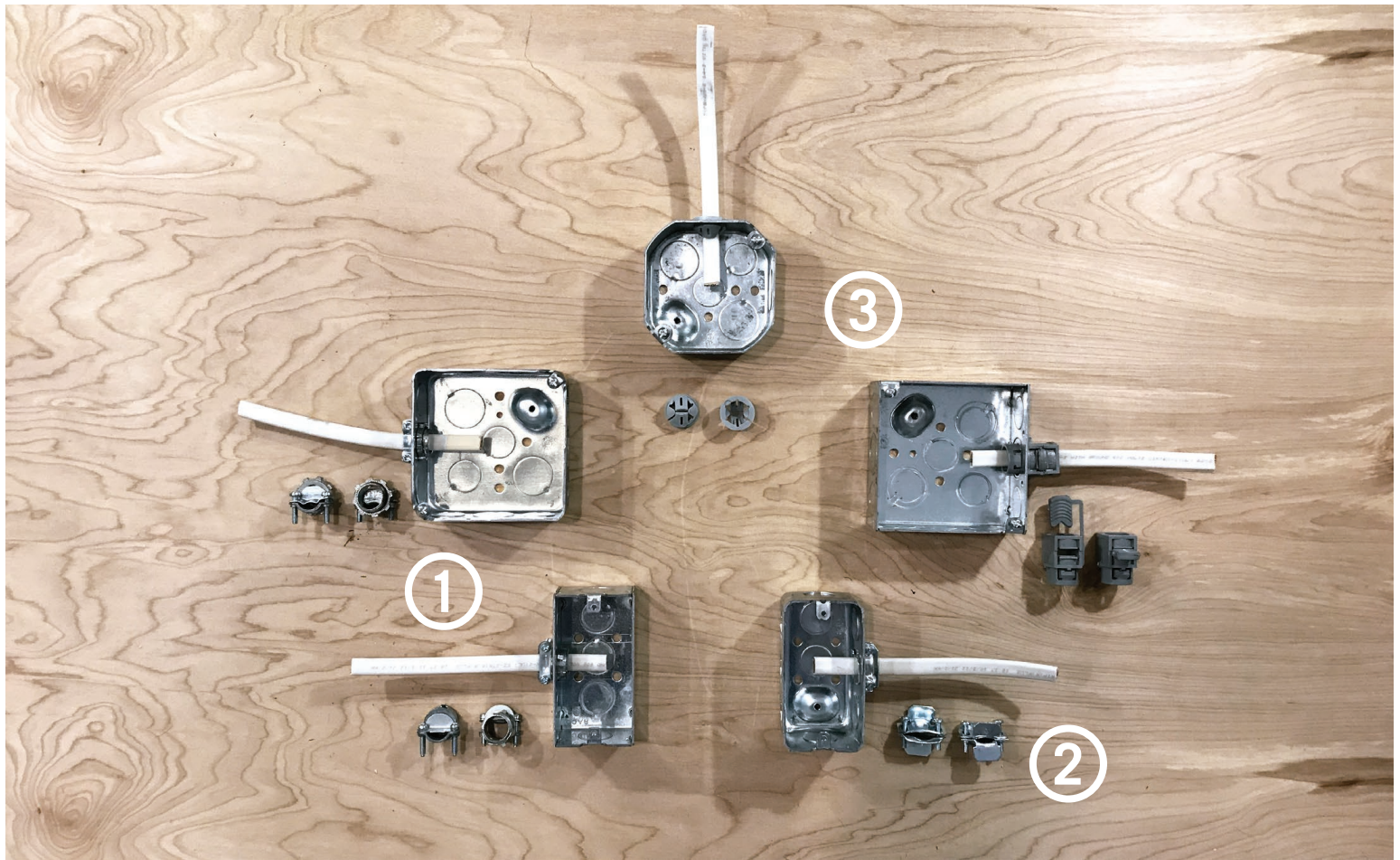
Insulated throat fittings are available in the Screw In Connector, Set Screw Connector, Saddle Connector, Squeeze Connector and 90 Degree Connector.

Part Type	FMC	Steel AC	Aluminum MC
Screw In Coupling	X		
Screw In Connector	X		
Squeeze Connector	X	X	X
90° Connector	X	X	X
AC Connector	X	X	
Set Screw Connector	X		
Clamp Combination Connector	X	X	X
Snap-In Connector	X	X	X
Saddle Connector	X	X	X
Duplex Connector	X	X	X
MC Snap-In Duplex		X	X
Cut In Snap Lock Connector		X	X
Double Snap Connector	X	X	X

*Specific sizes within each part type may have more specific detail with regard to the size/cable type being used. Please see **halexco.com** for further details.*



NM

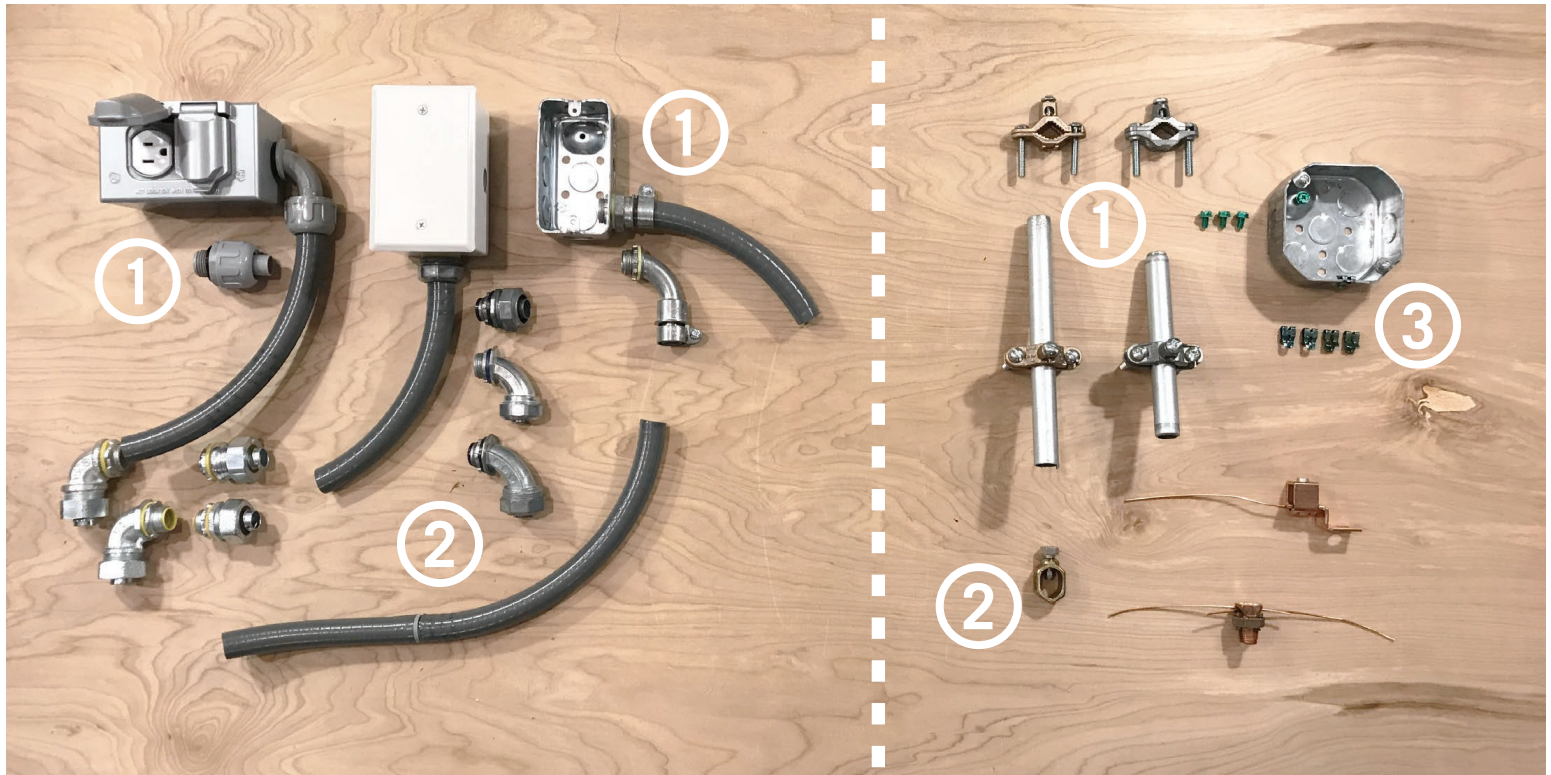


## Non-Metallic Fittings (NM)

**The Halex Non-Metallic category offers different options to connect Non-Metallic sheathed cable to a metal box or enclosure.**

- ① Most common is the Clamp Connector, available in 3/8" (1/2" knockout) up to 2". Also available is a Snap-In version that comes in 3/8" (1/2" knockout) and 3/4". This serves as a labor savings option that allows you to snap the connector into the box, versus using the standard locknut on the inside of the box.
- ② The Two Piece Connector is another option that is inserted into the knockout and clamped down onto the NM sheathed cable. This comes in 1/2" thru 1½" sizes.
- ③ Two other options are plastic connectors that snap into the box. The Push In Connector is available in 3/8" (1/2" knockout) and 3/4". Push the NM sheathed cable through the connector from the outside of the box and secure it. The Plastic Cable Connectors also snap into the box, but require an extra step. Place the separate piece of the fitting into the slot, located in the center of the fitting, then clamp down onto the cable with pliers.



**LQD****GND**

## Liquid Tight Fittings (LQD)

PICTURED LEFT

Connecting PVC and metallic liquid tight conduit to a box or enclosure can be done with a series of PVC, Zinc or Malleable Iron fittings. They come in straight, 45 degree and 90 degree connectors. Available in 1/2" through 4" in select parts.

① Halex also offers labor savings one piece zinc fittings (1/2" and 3/4") and two piece PVC fittings in 3/8" (1/2" knockout) through 2".

② Also available is a PVC coupling, to connect two pieces of PVC liquid tight conduit, in 1/2" and 3/4".

## Grounding Fittings (GND)

PICTURED RIGHT

① Halex offers a series of Ground Clamps for 1/2" to 1" pipe, as well as 1 1/4" through 2". Select zinc and copper, items are listed for direct ground burial.

② Also available are HALEX Ground Rod Clamps 1/2", 5/8", and 3/4" UL listed for direct burial.

③ Ground screws, ground clips, and ground wires for the proper grounding of metal boxes are part of the grounding category.