

# H2-EBC(100) ANALOG MODULE ADDRESSING

---



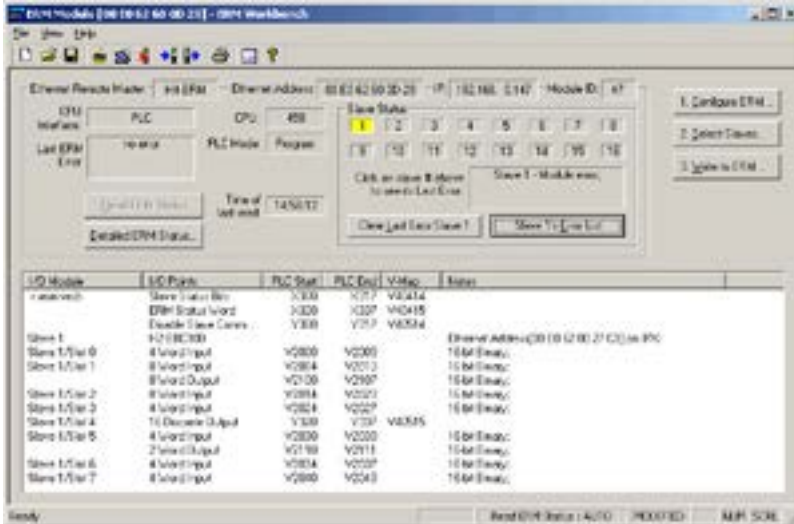
## In This Appendix...

H2-EBC(100) Analog Module Addressing - H2/4-ERM(100).....	F-2
---	-----

## H2-EBC(100) Analog Module Addressing - H2/4-ERM(100)

When using an ERM to EBC configuration, the analog module data in the H2-EBC(100) base is mapped to V-memory or Discrete I/O. Certain Diagnostics Data is not automatically mapped. If needed, the Diagnostics Data can be accessed as described in H24-ERM-M Appendix B.

The ERM Workbench software will tell you what the mapping is for each I/O module in the H2-EBC(100) base. Once you have configured the H2-ERM(100) or H4-ERM(100) using ERM Workbench you will get a screen similar to the following:



For the example above, the I/O configuration for Slave 1 is:

- Slot 0 = F2-04THM
- Slot 1 = F2-8AD4DA-1
- Slot 2 = F2-08AD-1
- Slot 3 = F2-04RTD
- Slot 4 = D2-12TR
- Slot 5 = F2-4AD2DA
- Slot 6 = F2-04AD-2
- Slot 7 = F2-04AD-1

Use the addresses shown in the ERM Workbench along with the following table to access the analog I/O with your ERM master.

For example, to configure the input resolution of the F2-8AD4DA-1 module located in Slot 1 of the system, the data provided above along with the table below would show that V memory location V2104 is required. Also, to read the current temperature detected by Channel 3 of the RTD module in Slot 3, V memory location V2026 is required.

H2-EBC(100) Analog Module Addressing - H2-ERM(100)			
Part Number	Channel Data	Module Configuration Data	Diagnostics Data*
<b>F2-04AD-1 (L)</b> <b>F2-04AD-2 (L)</b>	Input Words: Word 1 = Ch1 Word 2 = Ch2 Word 3 = Ch3 Word 4 = Ch4	None	No Broken Transmitter Detection If No 24VDC or No Terminal Block: <ul style="list-style-type: none"> <li>• All channels = 0 counts</li> <li>• 'Error' = 121**</li> <li>• 'Other' = Cycles 1 thru 3***</li> </ul>
<b>F2-08AD-1</b>	Input Words: Word 1 = Ch1 Word 2 = Ch2 Word 3 = Ch3 Word 4 = Ch4 Word 5 = Ch5 Word 6 = Ch6 Word 7 = Ch7 Word 8 = Ch8	None	Channels with broken transmitter: <ul style="list-style-type: none"> <li>• Channel=0 counts</li> <li>• 'Error' =121**</li> <li>• 'I/O Module Status Word 1' = Channel Number**</li> </ul> If No 24VDC or No Terminal Block: <ul style="list-style-type: none"> <li>• All channels = 0 counts</li> <li>• 'Error' =121**</li> <li>• 'Other' = Cycles 1 thru 7***</li> </ul>
<b>F2-08AD-2</b>	Input Words: Word 1 = Ch1 Word 2 = Ch2 Word 3 = Ch3 Word 4 = Ch4 Word 5 = Ch5 Word 6 = Ch6 Word 7 = Ch7 Word 8 = Ch8	None	No Broken Transmitter Detection If No 24VDC or No Terminal Block: <ul style="list-style-type: none"> <li>• All channels = 0 counts</li> <li>• 'Error' =121**</li> <li>• 'Other' = Cycles 1 thru 7***</li> </ul>
<b>F2-4AD2DA</b>	Input Words: Word 1 = Ch1 Word 2 = Ch2 Word 3 = Ch3 Word 4 = Ch4 Output Words: Word 1 = Ch1 Word 2 = Ch2	None	No Broken Transmitter Detection If No 24VDC or No Terminal Block: <ul style="list-style-type: none"> <li>• All channels = 0 counts</li> <li>• 'Error' =121**</li> <li>• 'Other' = Cycles 1 thru 3***</li> </ul>
<b>F2-8AD4DA-1</b>	Input Words: Word 1 = Ch1 Word 2 = Ch2 Word 3 = Ch3 Word 4 = Ch4 Word 5 = Ch5 Word 6 = Ch6 Word 7 = Ch7 Word 8 = Ch8 Output Words: Word 1 = Ch1 Word 2 = Ch2 Word 3 = Ch3 Word 4 = Ch4	Output Words: Word 5 = Input Resolution Word 6 = N/A Word 7 = Track and Hold Word 8 = Not Used	Channels with broken transmitter: <ul style="list-style-type: none"> <li>• Channel=0 counts</li> <li>• 'Error' = 142**</li> <li>• 'I/O Module Status Word 1' = Bit On for Each Channel with Broken Transmitter**</li> </ul> If No 24VDC or No Terminal Block: <ul style="list-style-type: none"> <li>• All channels = 0 counts</li> <li>• 'Error' =142**</li> <li>• 'Other' = 0xFF***</li> </ul>

\* Diagnostics Data is not automatically mapped. If needed, the Diagnostics Data can be accessed via ERM Workbench or ladder as described in H24-ERM-M Appendix B.

\*\* See Extended Slave Error Codes in Appendix B for further details.

\*\*\* 'Other' is a field accessible only in ERM Workbench by clicking the button: Slave N's Error List. This field cannot be read programmatically.

## Appendix F: H2-EBC(100) Analog Module Addressing

H2-EBC(100) Analog Module Addressing - H2-ERM(100)			
Part Number	Channel Data	Module Configuration Data	Diagnostics Data*
<b>F2-8AD4DA-2</b>	Input Words: Word 1 = Ch1 Word 2 = Ch2 Word 3 = Ch3 Word 4 = Ch4 Word 5 = Ch5 Word 6 = Ch6 Word 7 = Ch7 Word 8 = Ch8 Output Words: Word 1 = Ch1 Word 2 = Ch2 Word 3 = Ch3 Word 4 = Ch4	Output Words: Word 5 = Input Resolution Word 6 = Range Selection Word 7 = Track and Hold Word 8 = Not Used	No Broken Transmitter Detection If No 24VDC or No Terminal Block: <ul style="list-style-type: none"> <li>• All channels = 0 counts</li> <li>• 'Error' = 121**</li> <li>• 'Other' = 0xFF***</li> </ul>
<b>F2-04THM</b> <b>F2-04RTD</b>	Input Words: Word 1 = Ch1 Word 2 = Ch2 Word 3 = Ch3 Word 4 = Ch4	None	Channels with broken transmitter: <ul style="list-style-type: none"> <li>• Channel=0 counts</li> <li>• 'Error' = 142d**</li> <li>• 'I/O Module Status Word 1' = Bit On for Each Channel with Broken Transmitter**</li> </ul> If No 24VDC or No Terminal Block: <ul style="list-style-type: none"> <li>• All channels = 0 counts</li> <li>• 'Error' = 121**</li> <li>• 'Other' = 0x0F***</li> </ul>
<b>F2-02DA-1(L)</b> <b>F2-02DA-2(L)</b>	Output Words: Word 1 = Ch1 Word 2 = Ch2	None	None
<b>F2-02DAS-1</b> <b>F2-02DAS-2</b>	Output Words: Word 1 = Ch1 Word 2 = Ch2	None	None
<b>F2-08DA-1</b> <b>F2-08DA-2</b>	Output Words: Word 1 = Ch1 Word 2 = Ch2 Word 3 = Ch3 Word 4 = Ch4 Word 5 = Ch5 Word 6 = Ch6 Word 7 = Ch7 Word 8 = Ch8	None	None

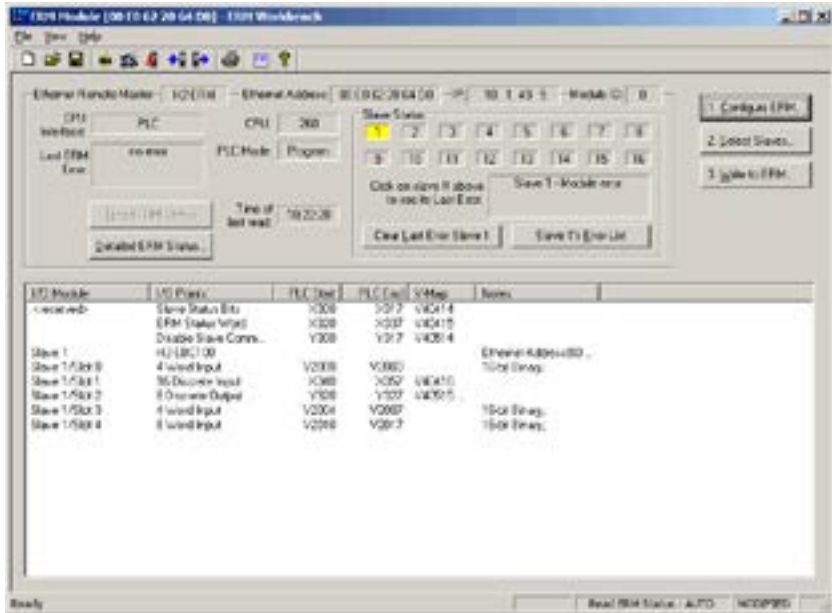
\* Diagnostics Data is not automatically mapped. If needed, the Diagnostics Data can be accessed via ERM Workbench or ladder as described in H24-ERM-M Appendix B.

\*\* See Extended Slave Error Codes in Appendix B for further details.

\*\*\* 'Other' is a field accessible only in ERM Workbench by clicking the button: Slave N's Error List. This field cannot be read programmatically.

### F2-04RTD Example (Module in Slot 3)

Using the 'ERM Workbench' dialog below and the 'H2-EBC(100) Analog Module Addressing - H2-ERM(100)' chart above, we can find the addresses that contain channel data for the F2-04RTD module in Slot 3. Diagnostics Data is not automatically mapped. If needed, the Diagnostics Data can be accessed via ERM Workbench or ladder as described in H24-ERM-M Appendix B.



Input Channel	Address	Error Words
Channel 1	V2004	The Slave Diagnostic Word for slot 3 would be mapped to V + 7 (the eighth address in your chosen V-memory range). The H24-ERM-M manual Appendix B contains an example.
Channel 2	V2005	
Channel 3	V2006	
Channel 4	V2007	