

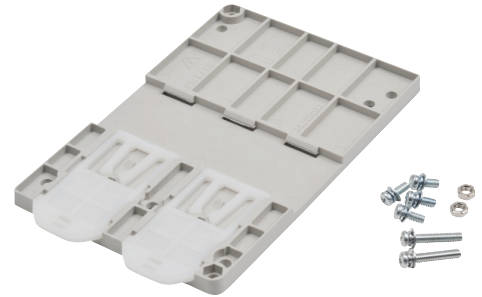


Quantity: 1  
Country of Origin: China

# GS2-DR02

## DIN RAIL ADAPTER INSTRUCTION SHEET

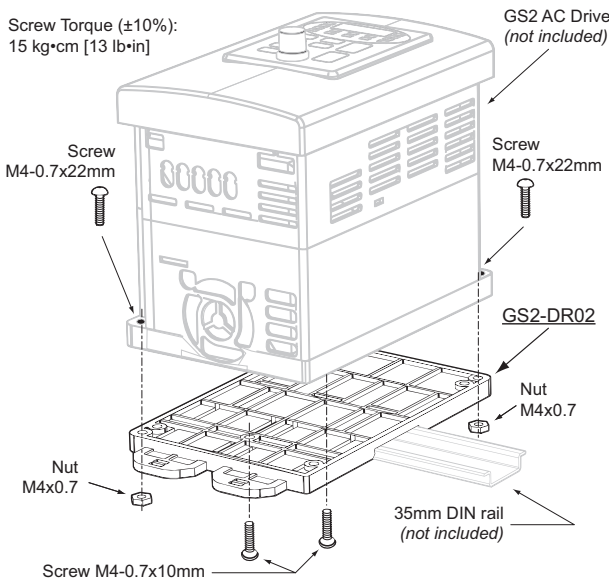
GS2 DIN Rail Adapter – For mounting on 35 mm DIN rail		
Part Number	Description	Drive Model (GS2)
GS2-DR02	DIN rail adapter plate for smaller GS2 drives; includes installation instructions & drive mounting screws & nuts [(4) M4-0.7x10mm screws, (2) M4-0.7x22mm screws, (2) M4x0.7 nuts]	GS2-10P2, GS2-10P5, GS2-11P0, GS2-20P5, GS2-21P0, GS2-22P0, GS2-41P0, GS2-42P0, GS2-43P0, GS2-51P0, GS2-52P0, GS2-53P0
<p><b>GS2-DR02 not required for GS1 drives (which have built-in DIN-rail mounting capability).</b>  <b>GS2-DR02 not applicable for:</b>                      Any GS2 drives not listed in this table,                      EMI filters mounted between drive and DIN rail adapter (mount filter separately, if required),                      Any GS3/DURApulse drives.</p>		



### MOUNTING INSTRUCTIONS

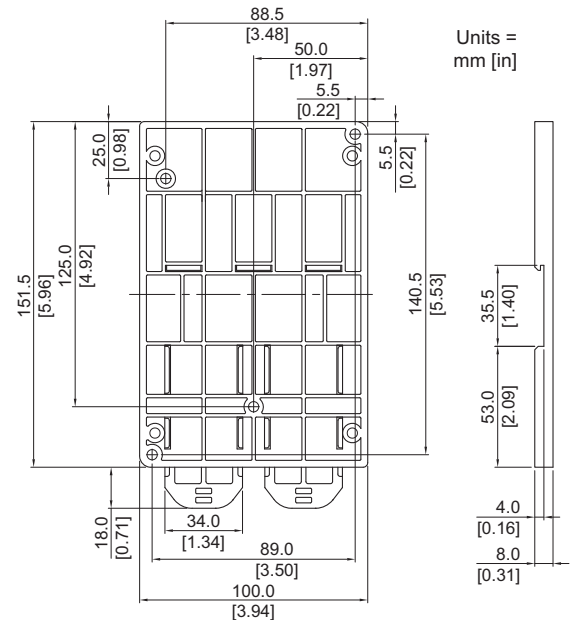
- To mount a GS2 series AC drive onto the GS2-DR02 adapter, use the screws and washers included with the adapter.
- To mount the drive and adapter onto DIN rail, click the adapter's two white mounting clips into the open position, place the drive/adapter combination firmly on the rail, and then click the mounting clips into the closed position. Pull gently to confirm that the combination is firmly attached. (For low-profile DIN rail, refer to diagram below: "Rotating Drive/Adapter Combo onto DIN Rail".)
- To remove the drive and adapter from DIN rail, click the adapter's two white mounting clips into the open position, and remove the drive/adapter combination.

### MOUNTING



### DIMENSIONS

Units = mm [in]



### ROTATING DRIVE/ADAPTER COMBO ONTO DIN RAIL

(for low-profile DIN rail)

- Hold drive/adapter at approx 11:00 position while pressing adapter upper clips over top of DIN rail. Ensure that the left-most clip firmly engages the top of the DIN rail.
- Rotate to 12:00 (vertical) position before closing adapter clips under bottom of DIN rail.

