

⚠ Before installation, wiring, operation, maintenance and inspection of the device, be sure to read the operating instructions carefully to ensure proper operations.

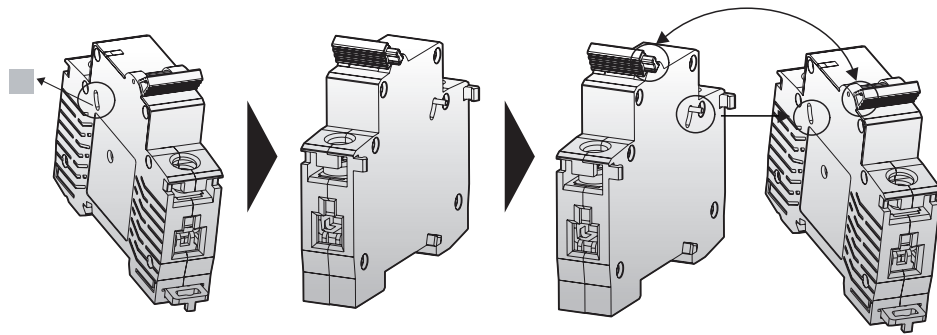
1. Ratings

GMCB-SH : Mount on the left side of GMCB, the shunt trip release is a remote release of GMCB.

GMCB-SH	Rated voltage (Ue)	DC60-220V, AC110-380V
	Working voltage	85%-110%Ue
Terminal Wire Capacity	14 AWG (Use copper wire rated for 65°C)	
Normal Ambient Temperature	-5 to 40°C	

2. Assembly

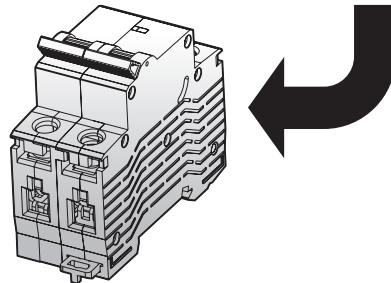
- 1) Remove Aux Cover from MCB
- 2) Accessory and MCB's handles are in off position
- 3) Adjust the accessory hole so as to it can be connected to the pin with the accessory, then adjust the location of where to you will insert the handle.



Acceptable fork terminal



- ▶ Terminal screw: M5
- ▶ Torque : 2Nm/18lbs.in



3. Safety Precaution

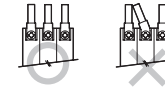
- ⚠ **DANGER:** Not following instructions could result in death or serious injury.
- ⚠ **CAUTION:** Not following instructions could result in minor injury or physical damage.

⚠ DANGER

- 1) Turn off the upstream circuit breaker before installing or service to prevent electric shocks and burns due to short circuit.
- 2) Do not touch any live naked terminals. It makes an electric shock.
- 3) Do not touch two live lines simultaneously. The circuit breaker does not operate even if an electric shock occurs.

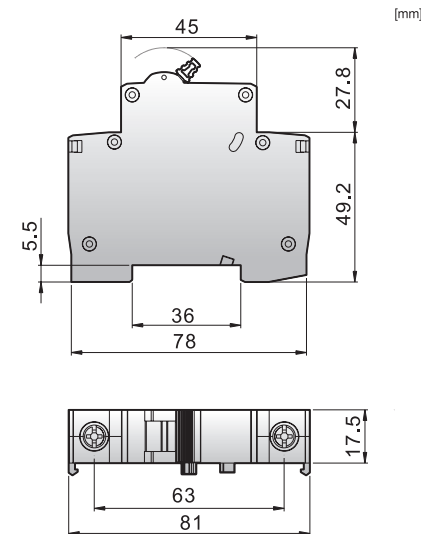
⚠ CAUTION

- 1) Installation by qualified electrician only, per NEC.
- 2) Do not install the circuit breaker in place of environment with shock, high temperature, humidity, dust, corrosive gases, excessive vibration, etc. to prevent fire accidents and malfunction of the device.
- 3) Use the breaker in a range of the rated voltage and current shown on the name plate. Or it may cause malfunction.

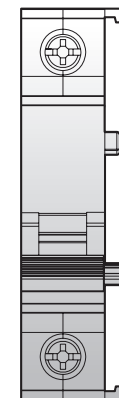


- 4) Each terminal or conductor pole should be connected in parallel as shown below.
- 5) Be sure to ground the ground terminals of electrical devices.
- 6) When the circuit breaker trips, remove the fault and turn the handle "ON". Or else, it may lead to the fire accident.
- 7) Do not modify the device unless it is permitted.
- 8) When the device become useless, it should be dispose of them as an industrial waste.
- 9) In order to fix MCB in DIN-Rail, Install end bracket on the both MCB side, After wiring.

4. Dimension



5. Appearance



⚠ Before installation, wiring, operation, maintenance and inspection of the device, be sure to read the operating instructions carefully to ensure proper operations.

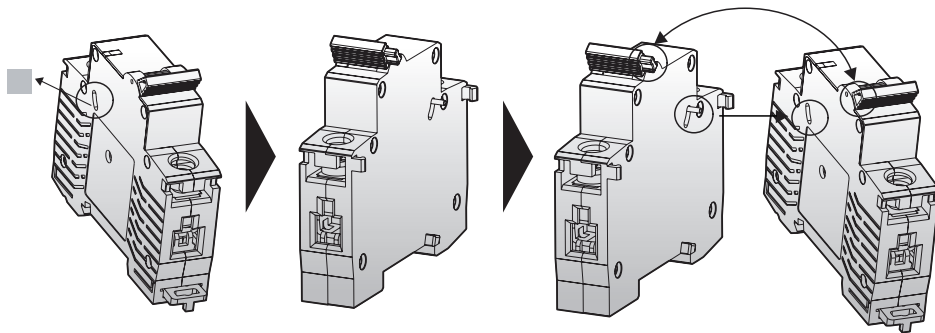
1. Ratings

GMCB-SH : Mount on the left side of GMCB, the shunt trip release is a remote release of GMCB.

GMCB-SH	Rated voltage (Ue)	DC60-220V, AC110-380V
	Working voltage	85%-110%Ue
Terminal Wire Capacity	14 AWG (Use copper wire rated for 65°C)	
Normal Ambient Temperature	-5 to 40°C	

2. Assembly

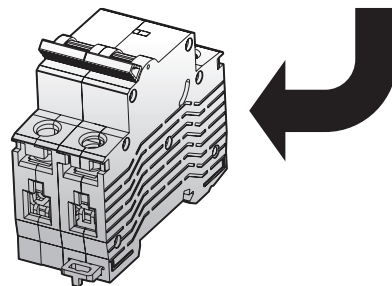
- 1) Remove Aux Cover from MCB
- 2) Accessory and MCB's handles are in off position
- 3) Adjust the accessory hole so as to it can be connected to the pin with the accessory, then adjust the location of where to you will insert the handle.



Acceptable fork terminal



- ▶ Terminal screw: M5
- ▶ Torque : 2Nm/18 lbs.in



3. Safety Precaution

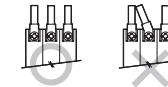
- ⚠ **DANGER:** Not following instructions could result in death or serious injury.
- ⚠ **CAUTION:** Not following instructions could result in minor injury or physical damage.

⚠ DANGER

- 1) Turn off the upstream circuit breaker before installing or service to prevent electric shocks and burns due to short circuit.
- 2) Do not touch any live naked terminals. It makes an electric shock.
- 3) Do not touch two live lines simultaneously. The circuit breaker does not operate even if an electric shock occurs.

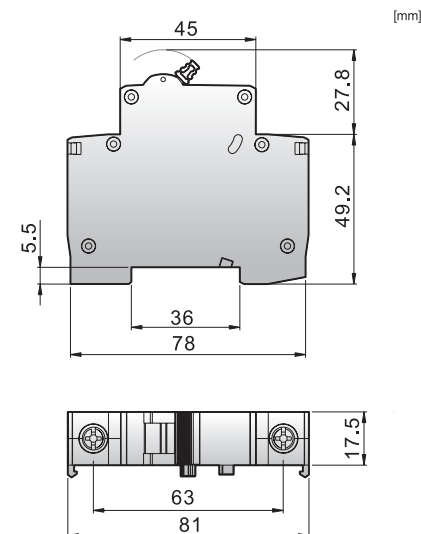
⚠ CAUTION

- 1) Installation by qualified electrician only, per NEC.
- 2) Do not install the circuit breaker in place of environment with shock, high temperature, humidity, dust, corrosive gases, excessive vibration, etc. to prevent fire accidents and malfunction of the device.
- 3) Use the breaker in a range of the rated voltage and current shown on the name plate. Or it may cause malfunction.



- 4) Each terminal or conductor pole should be connected in parallel as shown below.
- 5) Be sure to ground the ground terminals of electrical devices.
- 6) When the circuit breaker trips, remove the fault and turn the handle "ON". Or else, it may lead to the fire accident.
- 7) Do not modify the device unless it is permitted.
- 8) When the device become useless, it should be dispose of them as an industrial waste.
- 9) In order to fix MCB in DIN-Rail, Install end bracket on the both MCB side, After wiring.

4. Dimension



5. Appearance

