

ADC ACCESSORY DEVICE (Extended Busbar)

Applicable MCCBs: GCB100/150/250/400/600

- Be sure to read the manual and warning message for safety before using products.
- This manual should be given to the person who actually uses the products and is responsible for their maintenance.

SAFETY PRECAUTION

- Before installation, wiring, operation, maintenance and inspection of the device, be sure to read the safety precautions carefully and follow the message to ensure proper operations.

⚠ DANGER : Offending against the message will result in death or serious injury.

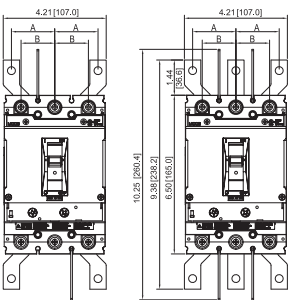
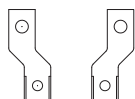
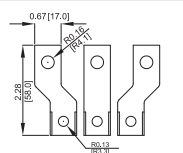
⚠ CAUTION : Offending against the message will result in minor injury or physical damage.

⚠ DANGER

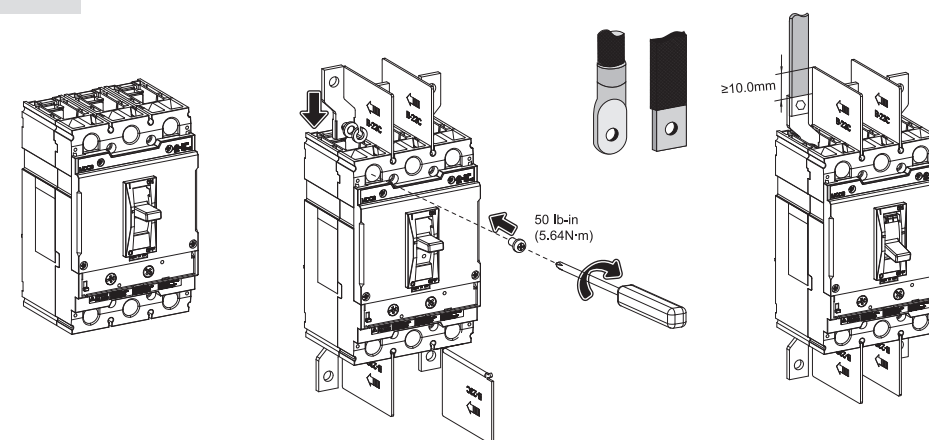
- Turn off the power before starting mounting, dismounting, wiring, maintenance or inspection. Failure to do may result in electric shocks and burns.

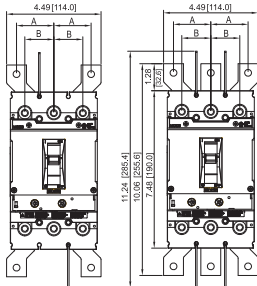
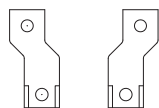
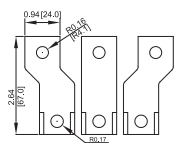
⚠ CAUTION

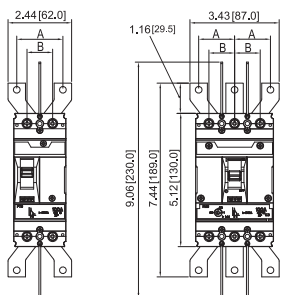
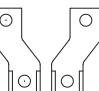
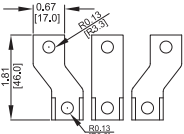
1. Do not use any deformed or damaged device.
2. Mounting, detaching, wiring, maintaining and checking should be done by an authorized or certified person.
3. It should not be used in severe environment such as high temperature, high humidity, dusty, corrosive gas, excessive vibration and impulse. They may result in fire or malfunction.
4. Use the device in a range of the rate current and pole of MCCB.
5. Mounting should be done according to the instruction manual. Failure to mount may cause malfunction of MCCB or cause an incident which may make the operator hurt.
6. Please tighten the terminal screw in proper torque to prevent overheating.
7. Each crimp terminal or conductor pole should be connected parallel.
8. When using the extended busbar, fit interphase barriers between terminals. If the breaker has no interphase barrier insulate the exposed part of the terminals or conductors with insulation sleeves tape or coating.
9. Be careful not to be damaged by accidents during transportation or installation.
10. Do not modify the device unless it is permitted.
11. When the device become useless, it should be disposed of them as an industrial waste.

GCB150	Pole	Size A		Size B		Feature
		Inch	mm	Inch	mm	
	2P	1.77	45.0	1.38	35.0	
	3P	1.77	45.0	1.38	35.0	

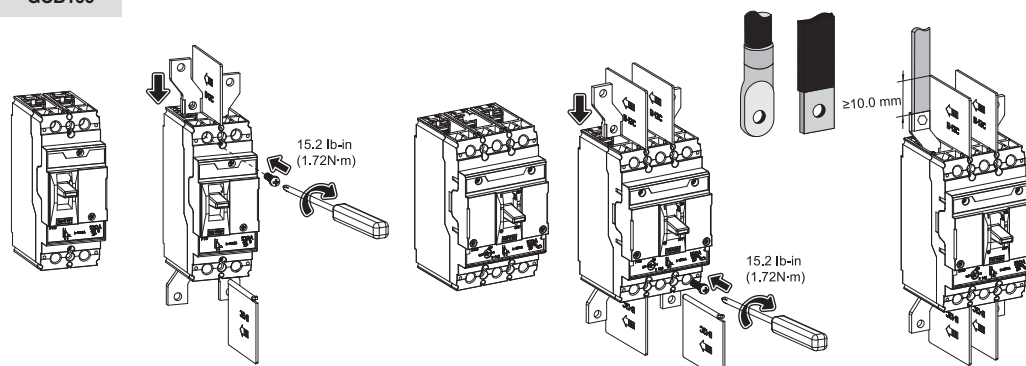
GCB150

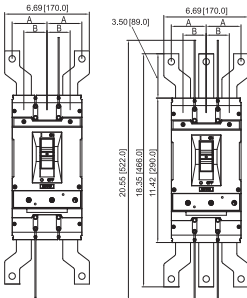
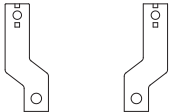
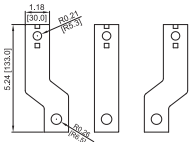


GCB250	Pole	Size A		Size B		Feature
		Inch	mm	Inch	mm	
	2P	1.77	45.0	1.38	35.0	
	3P	1.77	45.0	1.38	35.0	

GCB100	Pole	Size A		Size B		Feature
		Inch	mm	Inch	mm	
	2P	1.78	45.0	0.98	25.0	
	3P	1.38	35.0	0.98	25.0	

GCB100



GCB400	Pole	Size A		Size B		Feature
		Inch	mm	Inch	mm	
	2P	2.76	70.0	1.83	46.5	
	3P	2.76	70.0	1.83	46.5	

GCB600	Pole	Size A		Size B		Feature
		Inch	mm	Inch	mm	
	2P	2.76	70.0	1.83	46.5	
	3P	2.76	70.0	1.83	46.5	