

## GECP-24V-SS

### Supply Set

### Safety Warnings

**⚠ WARNING** Risk of injury by deploying insufficient qualified operating employees. Inappropriate appoint of non qualified or insufficient personnel can cause serious personal injuries and property damages. Tasks which apply special procedures should be done by trained and qualified employees or experts, especially electricians.

**⚠ WARNING** Short circuits and electric shocks by wrong voltage application and incorrect wiring. People can be seriously injured by electric current and the product can be damaged. Switch off the power of the whole system before wiring.

**⚠ CAUTION** Risk of injury by electric current. People can be injured by electric current and the product can be damaged. De-energize the system before mounting.

### NOTICE:

- Follow the ESD regulations.
- Only use certified components to ensure reliable functions.
- Follow the valid safety regulations and general regulations regarding the technical standards.
- You will find further notes and information on the respective product in the corresponding data sheet.

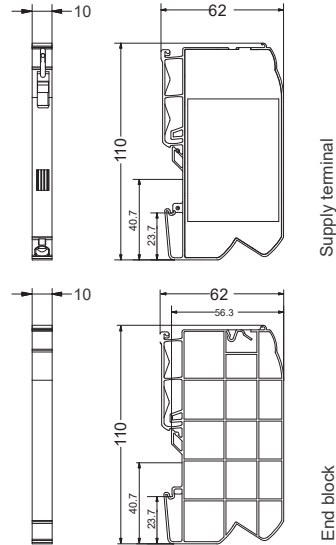
### Wiring

Push-in connection	Stripping Length	Cross section
solid		0.5 ... 10 mm², AWG 22 – 7
stranded		0.5 ... 10 mm², AWG 22 – 7
stranded with ferrule		0.5 ... 6 mm², AWG 22 – 9
UL Values stranded		AWG 14 – 8

### Product Overview

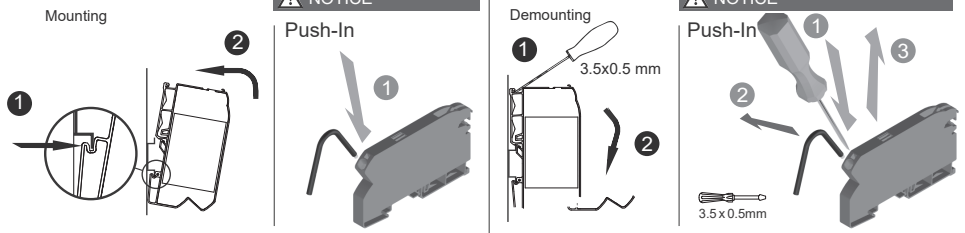
NOTE: The supply terminals are only for supplying modules of the GECP series.

Supply Set 10 mm²  
Connection type: Push-In  
Refer to the Wiring Table



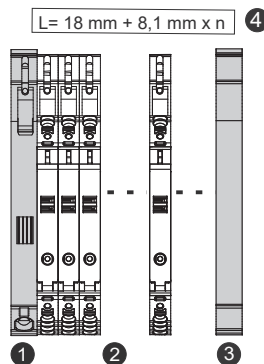
Accessories  
Copper bus bar, 4 modules GECP-BB-4  
Copper bus bar, 8 modules GECP-BB-8

Mounting	Push-In	Demounting



### Installation Options

Standard Application



\*n= GECP Modules

- 1 Supply terminal from set GECP-24V-SS
- 2 Monitoring Module – GECPxxxxx
- 3 End terminal from set GECP-24V-SS
- 4 Copper Bus Bar - GECP-BB-x