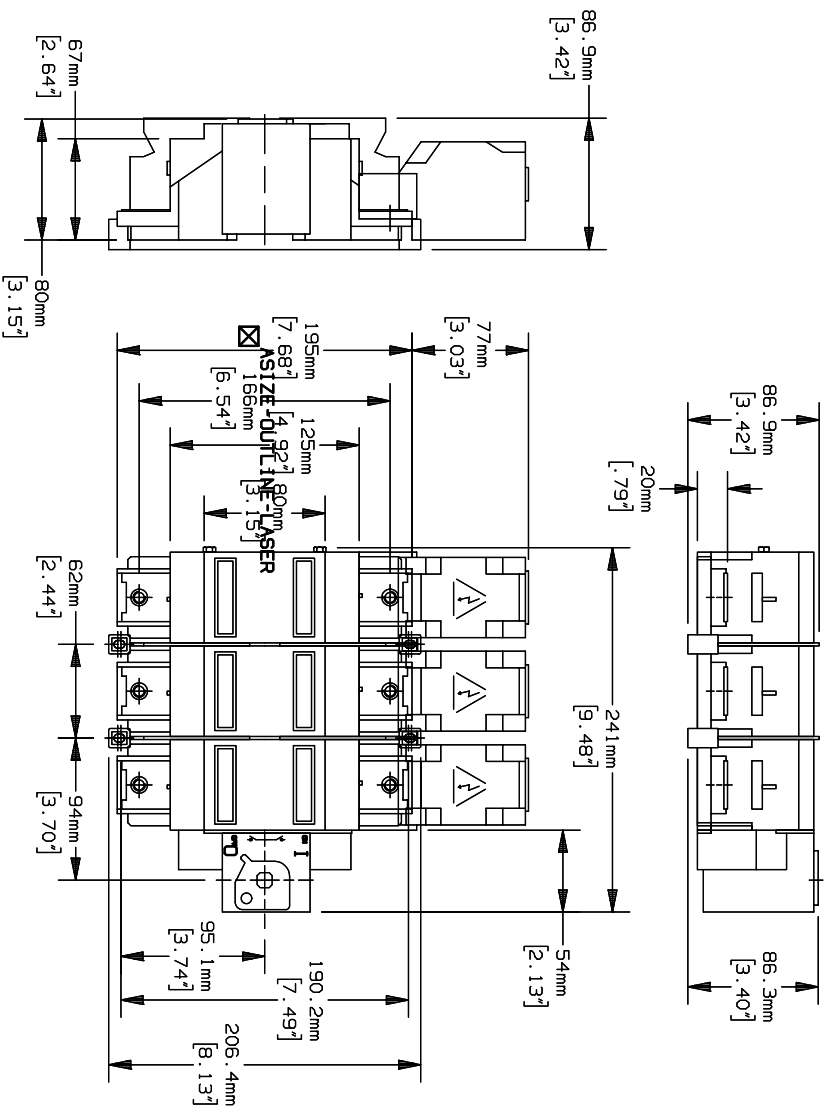


-	4/7/01	N/A	INITIAL RELEASE	LAS	N/A	N/A
---	--------	-----	-----------------	-----	-----	-----



- NOTES:
1. MATERIAL COMPOSITION: GLASS FILLED POLYESTER.
 2. DIMENSIONS ARE IN mm/(INCHES).
 3. TOLERANCES ARE ± 0.1 UNLESS OTHERWISE SPECIFIED.

P/N	AMPERE RATING	CONN TYPE	RMS SYM RATING	TORQUE (LBS-IN)	WIRE		UL		CSA	
					WIRE RANGE	° C	TYPE	FILE NO.	GUIDE NO.	FILE
SCV200	200	N/A	200,000	-			E191605	WPZX	703166	465204

NON-FUSIBLE DISCONNECT SWITCH
600V.

700635