

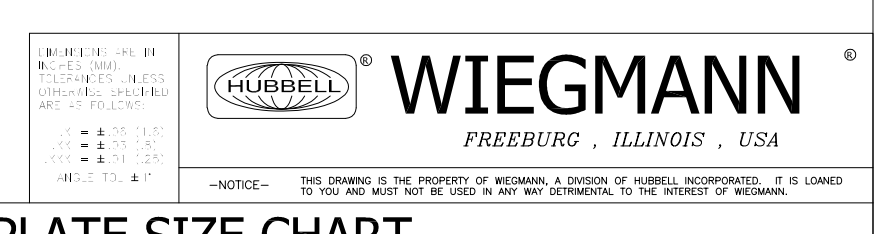
**DRILL TEMPLATE DETAIL**

1. PROVIDED FOR PROPER HOLE LOCATION METHOD
2. USE DRILL TEMPLATE SIZE CHART AND CORRESPONDING WIEGMANN PART NUMBER TO DETERMINE PROPER TEMPLATE (ADDITIONAL SIZES ON OPPOSITE SIDE OF PAPER)
3. DETERMINE HMI COVER KIT LOCATION AND PLACE TEMPLATE IN DESIRED LOCATION
4. ONCE TEMPLATE IS IN DESIRED LOCATION FASTEN TO MOUNTING SURFACE (RECOMMENDED: USE TAPE ON ALL 4 CORNERS TO FASTEN TEMPLATE TO MOUNTING SURFACE)
5. **WARNING:** BEFORE DRILLING, ENSURE THERE WILL BE NO INTERFERENCE ON OPPOSITE SIDE OF MOUNTING SURFACE WITH THE HMI COVER KIT OR THE HMI COVER KIT MOUNTING STUDS/HARDWARE
6. CENTER PUNCH ON THE CENTER OF CROSSHAIRS FOR DESIRED TEMPLATE SIZE
7. DRILL HOLES CENTERED ON PUNCH MARKS USING A 9/32" DRILL BIT
8. DASHED LINES REPRESENT THE BACK CUTOUT OF THE HMI COVER KIT ENCLOSURE
9. SEE OPPOSITE SIDE FOR HMI COVER KIT MOUNTING INSTRUCTIONS

**HMI COVER KIT APPLICATIONS**

HMI COVER KITS ARE INTENDED TO PROVIDE A DEGREE OF PROTECTION FOR HMIs OR OTHER OPERATOR INTERFACE DEVICES THAT ARE INSTALLED ON ELECTRICAL ENCLOSURES. THE KIT ALLOWS FOR EASY ACCESS TO THE DEVICE(S) WITH A HINGED DOOR AND 1/4-TURN LATCH(ES). KITS THAT HAVE VIEWING WINDOWS INSTALLED ON THE DOOR (PART NUMBERS NOT CONTAINING "BC") ALLOW THE OPERATOR TO MONITOR THE DEVICE(S) WHILE THE DOOR IS LATCHED SHUT, KEEPING THEM PROTECTED DURING OPERATION. HUBBELL-WIEGMANN IS NOT RESPONSIBLE FOR ANY DAMAGES TO THE HMI COVER KIT OR DEVICE(S) IT IS INTENDED TO PROTECT DUE TO MISUSE OR IMPROPER INSTALLATION.

**CAUTION:** Before installing, make sure you are compliant with area classifications - as failure to do so may result in bodily injury, death and property damage. Do not attempt installation until you are familiar with the following procedures. All installation must comply with the applicable Electrical Code(s). Make sure that all supply circuits are de-energized before starting installation or maintenance. Verify that the installation is grounded. Failure to ground will create electrical shock hazards, which can cause serious injury and/or death.  
**Important:** Please read these instructions carefully before installing or maintaining this equipment. Safe electrical practices should be followed at all times and this data should be used as a guide only. Maintain the environmental integrity of this enclosure by closing all openings w/UL listed or recognized components that have the same environmental rating as the enclosure.



DRILL TEMPLATE SIZE CHART	
PART NUMBER	TEMPLATE
WADW292002, WADW292002BC, WADW292002SS, & WADW292002BCSS	A
WADW231702, WADW231702BC, WADW231702SS & WADW231702BCSS	B
WADW191302, WADW191302BC, WADW191302SS, & WADW191302BCSS	C
WADW150902, WADW150902BC, WADW150902SS, & WADW150902BCSS	D

#### HMI COVER KIT APPLICATIONS

HMI COVER KITS ARE INTENDED TO PROVIDE A DEGREE OF PROTECTION FOR HMIs OR OTHER OPERATOR INTERFACE DEVICES THAT ARE INSTALLED ON ELECTRICAL ENCLOSURES. THE KIT ALLOWS FOR EASY ACCESS TO THE DEVICE(S) WITH A HINGED DOOR AND 1/4-TURN LATCHES). KITS THAT HAVE VIEWING WINDOWS INSTALLED ON THE DOOR (PART NUMBERS NOT CONTAINING "BC") ALLOW THE OPERATOR TO MONITOR THE DEVICE(S) WHILE THE DOOR IS LATCHED SHUT, KEEPING THEM PROTECTED DURING OPERATION.

HUBBELL-WIEGEMANN IS NOT RESPONSIBLE FOR ANY DAMAGES TO THE HMI COVER KIT OR DEVICE(S) IT IS INTENDED TO PROTECT DUE TO MISUSE OR IMPROPER INSTALLATION.

#### DRILL TEMPLATE INSTRUCTIONS

1. PROVIDED FOR PROPER HOLE LOCATION METHOD
2. USE DRILL TEMPLATE SIZE CHART AND CORRESPONDING WIEGEMANN PART NUMBER TO DETERMINE PROPER TEMPLATE (ADDITIONAL SIZES ON OPPOSITE SIDE OF PAPER)
3. DETERMINE WINDOW KIT LOCATION AND PLACE TEMPLATE IN DESIRED LOCATION
4. ONCE TEMPLATE IS IN DESIRED LOCATION FASTEN TO MOUNTING SURFACE (RECOMMENDED: USE TAPE ON ALL 4 CORNERS TO FASTEN TEMPLATE TO MOUNTING SURFACE)
5. **WARNING:** BEFORE DRILLING, ENSURE THERE WILL BE NO INTERFERENCE ON OPPOSITE SIDE OF MOUNTING SURFACE WITH THE WINDOW KIT OR THE WINDOW KIT MOUNTING STUDS/HARDWARE
6. CENTER PUNCH ON THE CENTER OF CROSSHAIRS FOR DESIRED TEMPLATE SIZE
7. DRILL HOLES CENTERED ON PUNCH MARKS USING A 9/32" DRILL BIT
8. DASHED LINES REPRESENT THE BACK CUTOUT OF THE WINDOW KIT ENCLOSURE
9. SEE BELOW FOR HMI COVER KIT MOUNTING INSTRUCTIONS

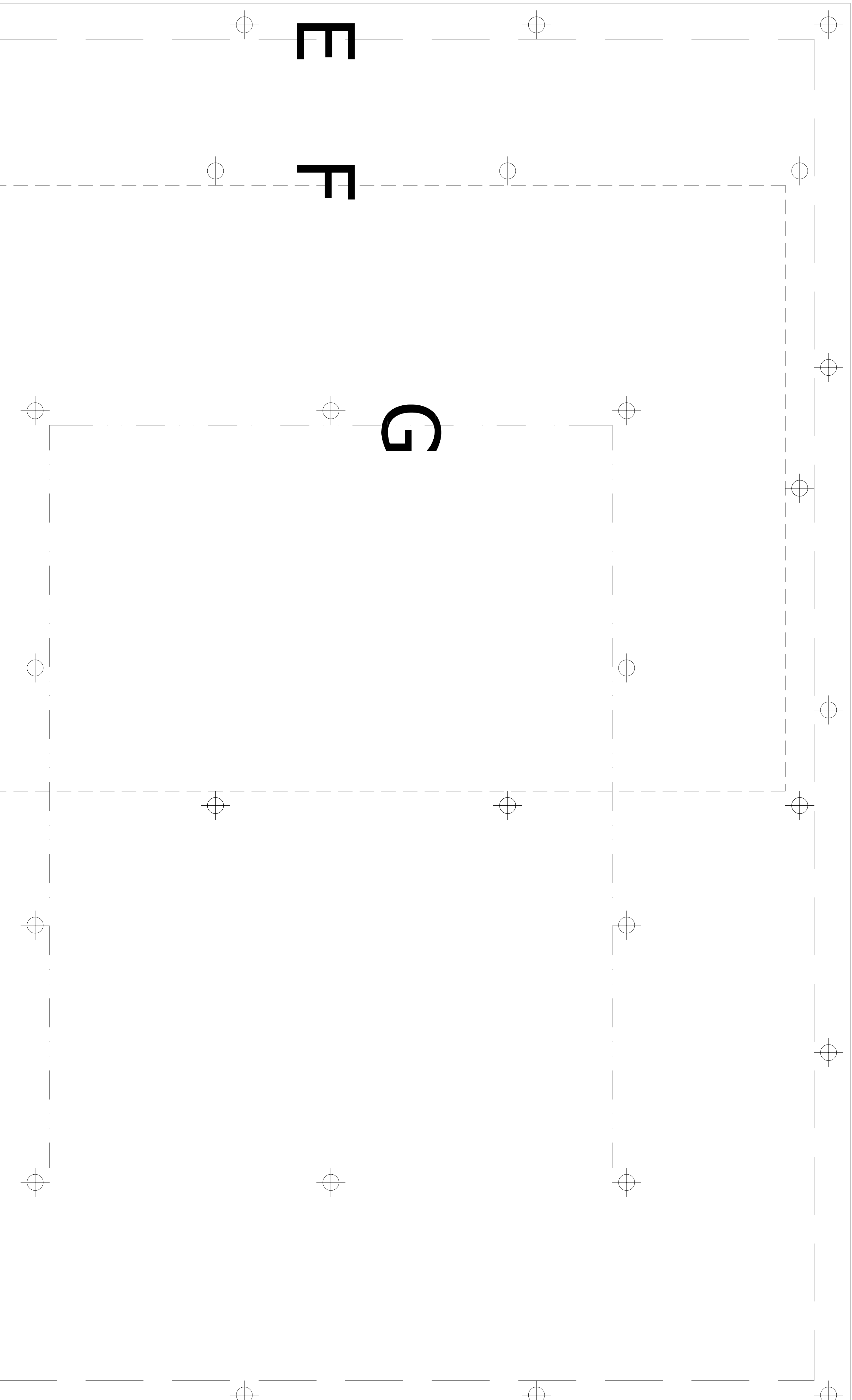
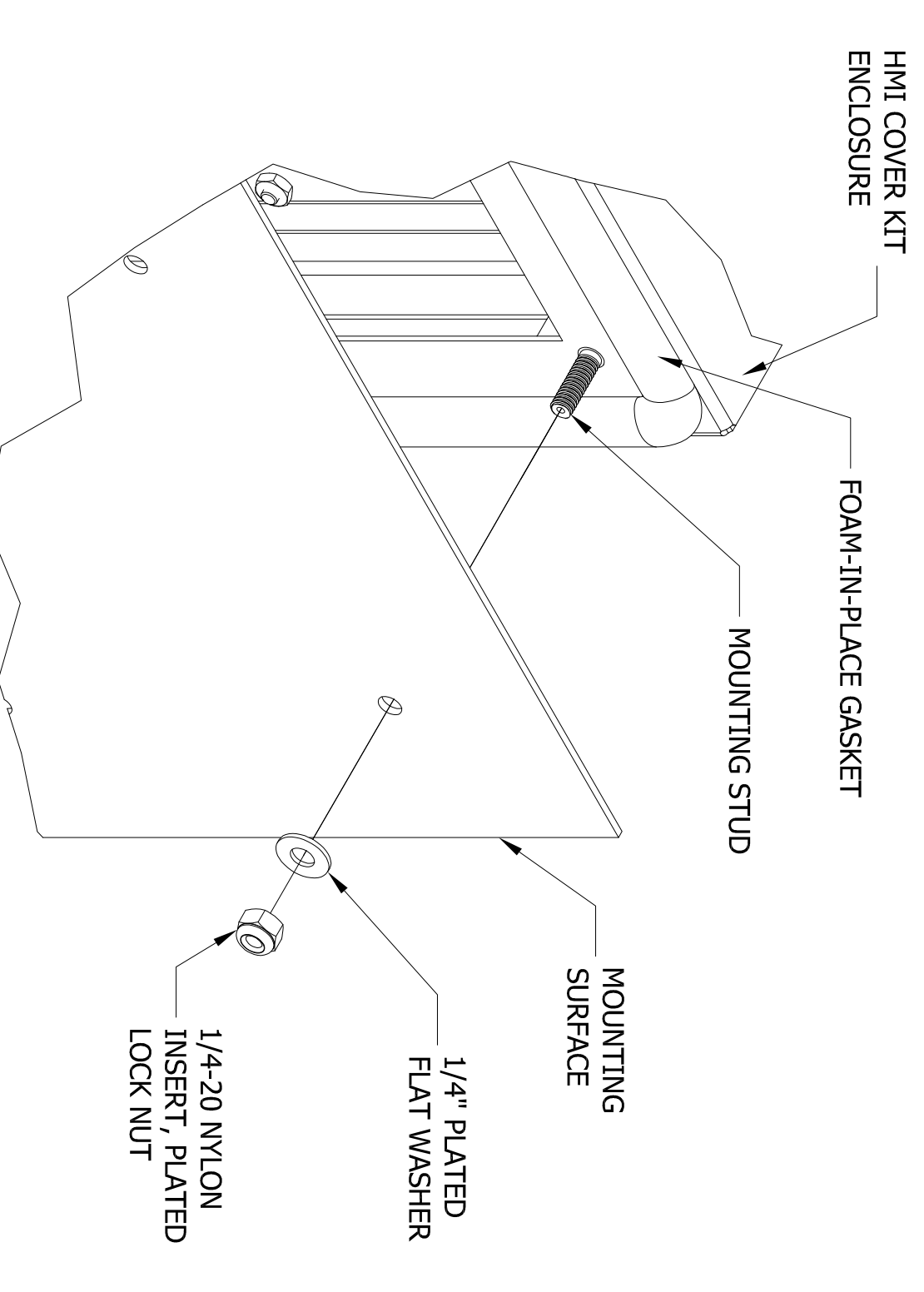


FIGURE: 1



#### HMI COVER KIT ENCLOSURE MOUNTING INSTRUCTIONS

1. BEFORE MOUNTING HMI COVER KIT DRILL ALL MOUNTING HOLES (SEE DRILL TEMPLATE INSTRUCTIONS)
2. MOUNT THE HMI COVER KIT TO MOUNTING SURFACE WHERE HOLES HAVE BEEN DRILLED USING THE DRILL TEMPLATE
3. WHILE HOLDING THE HMI COVER KIT TO THE MOUNTING SURFACE INSTALL A FLAT WASHER AND A LOCK NUT ON ONE OF THE MIDDLE TOP MOUNTING STUDS AS SHOWN IN FIGURE 1. INSTALL THE NUT UNTIL IT IS FINGER TIGHT. (RECOMMENDED: USE TWO PEOPLE TO COMPLETE STEP 3)
4. NOW EQUIP THE REST OF THE HMI COVER KIT MOUNTING STUDS WITH A FLAT WASHER AND A LOCK NUT, AND INSTALL THE NUTS FINGER TIGHT.
5. USING A TORQUE WRENCH WITH A 7/16" SOCKET TIGHTEN ALL NUTS TO 45 IN-LBS

**CAUTION:** Before performing, make sure you are completely safe from discharges, as failure to do so may result in bodily injury, death and property damage. Do not attempt installation until you are certain that the enclosure is grounded. Failure to ground will cause electrical shock hazards, which can cause serious injury and/or death.

**IMPORTANT:** Make sure these instructions carefully indicate mounting or manufacturing tolerances. Care detailed practices should be followed at all times and the data should be used as a guide only. Consult the dimensional drawings of the products by listing it in, listed or requested components that have the same dimensional drawing for reference.



#### DRILL TEMPLATE SIZE CHART

PART NUMBER	TEMPLATE
WADW232602, WADW232602BC, WADW232602SS, & WADW232602BCSS	E
WADW231302, WADW231302BC, WADW231302SS, & WADW231302BCSS	F
WADW131602, WADW131602BC, WADW131602SS, & WADW131602BCSS	G