

Adjustable Mounting Kit

1. Insert 1/4-20 spring nut into mounting channel.
2. Place corner slide over 1/4-20 spring nut with threaded stud pointed toward the front of the enclosure. Assemble 1/4-20 round head bolt and tighten with screw driver.
3. Install mounting channel assembly into corner of enclosure by placing rear bracket over enclosure stud, orienting channel at a 45° angle to the enclosure (see figures 1 & 2). Assemble 5/16-18 flanged nut and tighten.

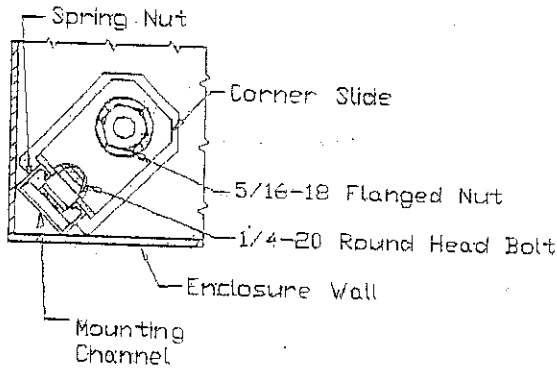


Figure 2
(corner position
mounting channel)

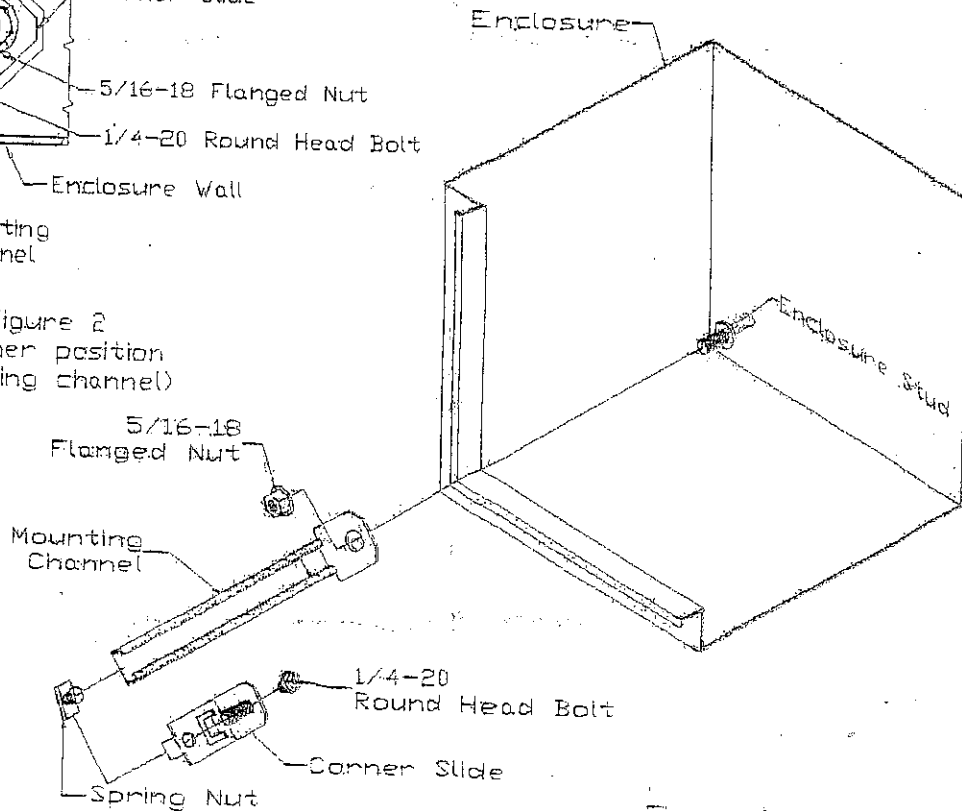


Figure 1