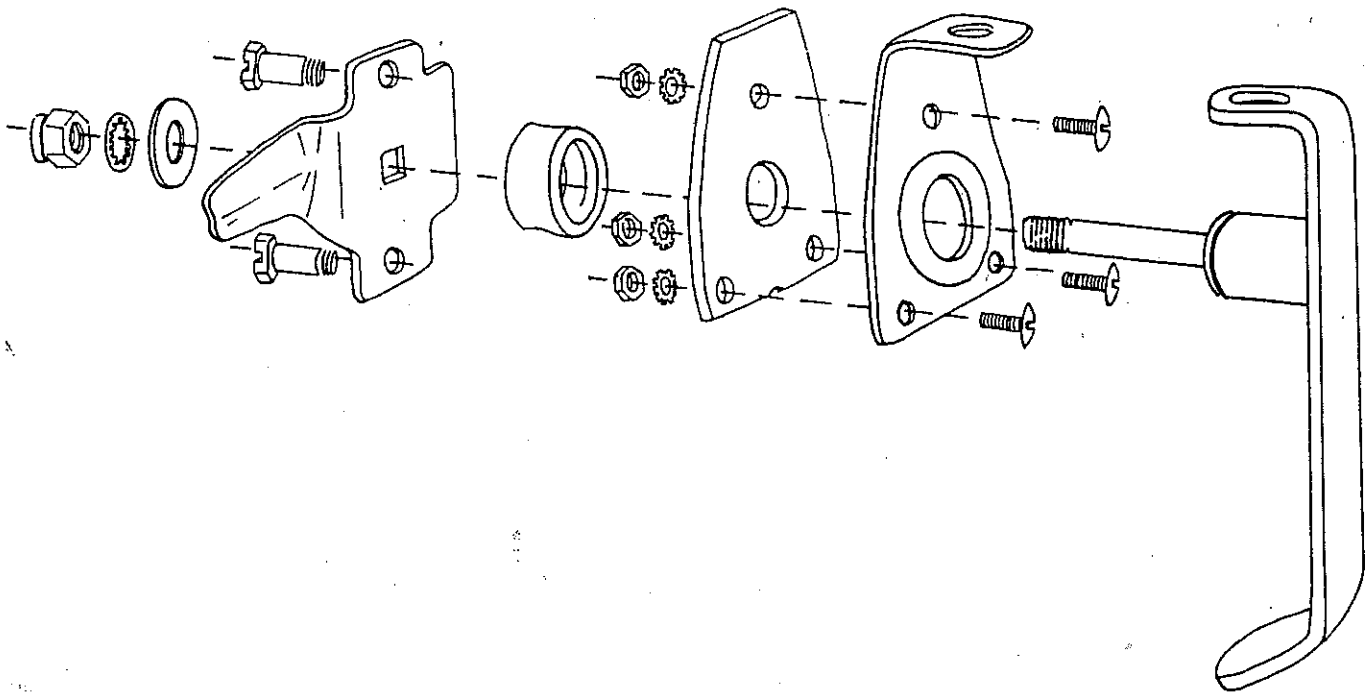


LOCK INSTALLATION INSTRUCTIONS FOR PADLOCKING HANDLE

1. Place gasket on handle
2. Place handle in position — through outside opening.
3. Place bolts through three outside openings and add nuts from inside door and tighten into place.
4. Add plastic spacer.
5. Add "T" bar on top of spacer.
6. Add washer and locknut.
7. Place chute bolt through slot, place roller on chute bolt and fasten with cap nut. Bring lower end to top of "T" bar and fasten with shoulder bolt into "T" bar.
8. If 1 pt. disregard #7.



PN 33026

MWSPLH