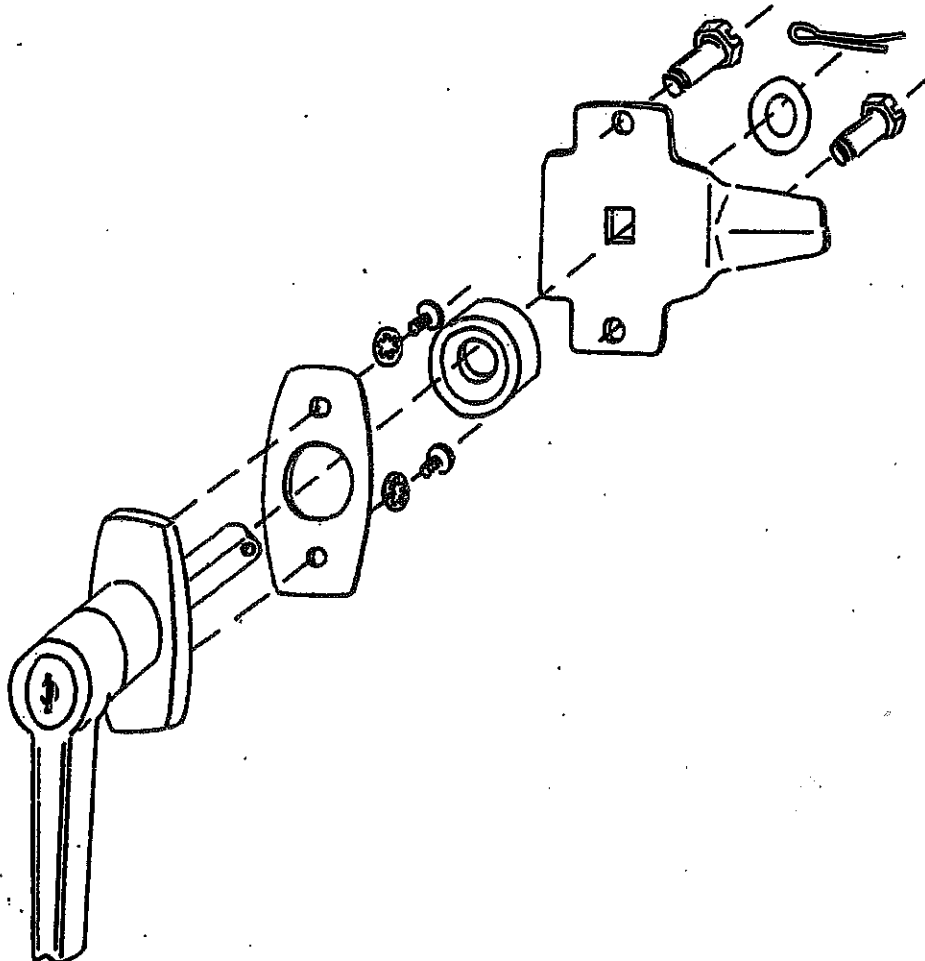




# WIEGMANN™

## LOCK INSTALLATION INSTRUCTIONS FOR 1 PT. & 3 PT. KEYLOCKING HANDLES

1. Make certain handle opens to RIGHT (toward hinge) for RIGHT HAND DOOR opening or to LEFT (toward hinge) for LEFT HAND DOOR opening.
2. Place handle on outside of door, place two screws from inside door into handle and tighten.
3. Place one nut and then lock washer onto handle mechanism.
4. Place "T" bar on top of lock washer, facing door opening.
5. Add second lock washer and then nut and tighten assembly.
6. Place chute bolt through slot, place roller on chute bolt and fasten with cap nut. Bring lower end to top of "T" bar and fasten with shoulder bolt into "T" bar.
7. If 1 pt. disregard #6.



PN 33031

MWSKLM