

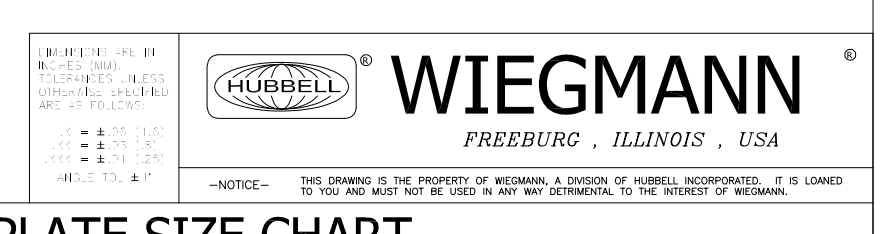
**DRILL TEMPLATE DETAIL**

1. PROVIDED FOR PROPER HOLE LOCATION METHOD
2. USE DRILL TEMPLATE SIZE CHART AND CORRESPONDING WIEGMANN PART NUMBER TO DETERMINE PROPER TEMPLATE (ADDITIONAL SIZES ON OPPOSITE SIDE OF PAPER)
3. DETERMINE HMI COVER KIT LOCATION AND PLACE TEMPLATE IN DESIRED LOCATION
4. ONCE TEMPLATE IS IN DESIRED LOCATION FASTEN TO MOUNTING SURFACE (RECOMMENDED: USE TAPE ON ALL 4 CORNERS TO FASTEN TEMPLATE TO MOUNTING SURFACE)
5. **WARNING:** BEFORE DRILLING, ENSURE THERE WILL BE NO INTERFERENCE ON OPPOSITE SIDE OF MOUNTING SURFACE WITH THE HMI COVER KIT OR THE HMI COVER KIT MOUNTING STUDS/HARDWARE
6. CENTER PUNCH ON THE CENTER OF CROSSHAIRS FOR DESIRED TEMPLATE SIZE
7. DRILL HOLES CENTERED ON PUNCH MARKS USING A 9/32" DRILL BIT
8. DASHED LINES REPRESENT THE BACK CUTOUT OF THE HMI COVER KIT ENCLOSURE
9. SEE OPPOSITE SIDE FOR HMI COVER KIT MOUNTING INSTRUCTIONS

**HMI COVER KIT APPLICATIONS**

HMI COVER KITS ARE INTENDED TO PROVIDE A DEGREE OF PROTECTION FOR HMIs OR OTHER OPERATOR INTERFACE DEVICES THAT ARE INSTALLED ON ELECTRICAL ENCLOSURES. THE KIT ALLOWS FOR EASY ACCESS TO THE DEVICE(S) WITH A HINGED DOOR AND 1/4-TURN LATCH(ES). KITS THAT HAVE VIEWING WINDOWS INSTALLED ON THE DOOR (PART NUMBERS NOT CONTAINING "BC") ALLOW THE OPERATOR TO MONITOR THE DEVICE(S) WHILE THE DOOR IS LATCHED SHUT, KEEPING THEM PROTECTED DURING OPERATION. HUBBELL-WIEGMANN IS NOT RESPONSIBLE FOR ANY DAMAGES TO THE HMI COVER KIT OR DEVICE(S) IT IS INTENDED TO PROTECT DUE TO MISUSE OR IMPROPER INSTALLATION.

**CAUTION:** Before installing, make sure you are compliant with area classifications - as failure to do so may result in bodily injury, death and property damage. Do not attempt installation until you are familiar with the following procedures. All installation must comply with the applicable Electrical Code(s). Make sure that all supply circuits are de-energized before starting installation or maintenance. Verify that the installation is grounded. Failure to ground will create electrical shock hazards, which can cause serious injury and/or death.  
**Important:** Please read these instructions carefully before installing or maintaining this equipment. Safe electrical practices should be followed at all times and this data should be used as a guide only. Maintain the environmental integrity of this enclosure by closing all openings w/UL listed or recognized components that have the same environmental rating as the enclosure.



DRILL TEMPLATE SIZE CHART	
PART NUMBER	TEMPLATE
WADW292002, WADW292002BC, WADW292002SS, & WADW292002BCSS	A
WADW231702, WADW231702BC, WADW231702SS & WADW231702BCSS	B
WADW191302, WADW191302BC, WADW191302SS, & WADW191302BCSS	C
WADW150902, WADW150902BC, WADW150902SS, & WADW150902BCSS	D

