



# WIEGMANN

FREEBURG, ILLINOIS, USA

**HUBBELL ELECTRICAL PRODUCTS**  
 A Division of HUBBELL  
 INCORPORATED (Delaware)  
 501 West Apple  
 Freeburg, IL 62243 USA  
 For Customer Service: 618-539-3193

DWG. NO. HWIHF33013

P.N. HFW33013

DATE 7/3/14

AFFECTED P.N. HFWRA20C, HFWRA24C, HFWRA30C, HFWRA36C, HFWRA48C

## INSTALLATION, OPERATION, & MAINTENANCE DATA SHEET

**CAUTION:** Before installing, make sure you are compliant with area classifications - as failure to do so may result in bodily injury, death and property damage. Do not attempt installation until you are familiar with the following procedures. All installation must comply with the applicable Electrical Code(s). Make sure that all supply circuits are de-energized before starting installation or maintenance. Verify that the installation is grounded. Failure to ground will create electrical shock hazards, which can cause serious injury and or death.

**Important:** Please read these instructions carefully before installing or maintaining this equipment. Safe electrical practices should be followed at all times and this data should be used as a guide only. Maintain the environmental integrity of this enclosure by closing all openings w/UL listed or recognized components that have the same environmental rating as the enclosure.

### TOOLS NEEDED:

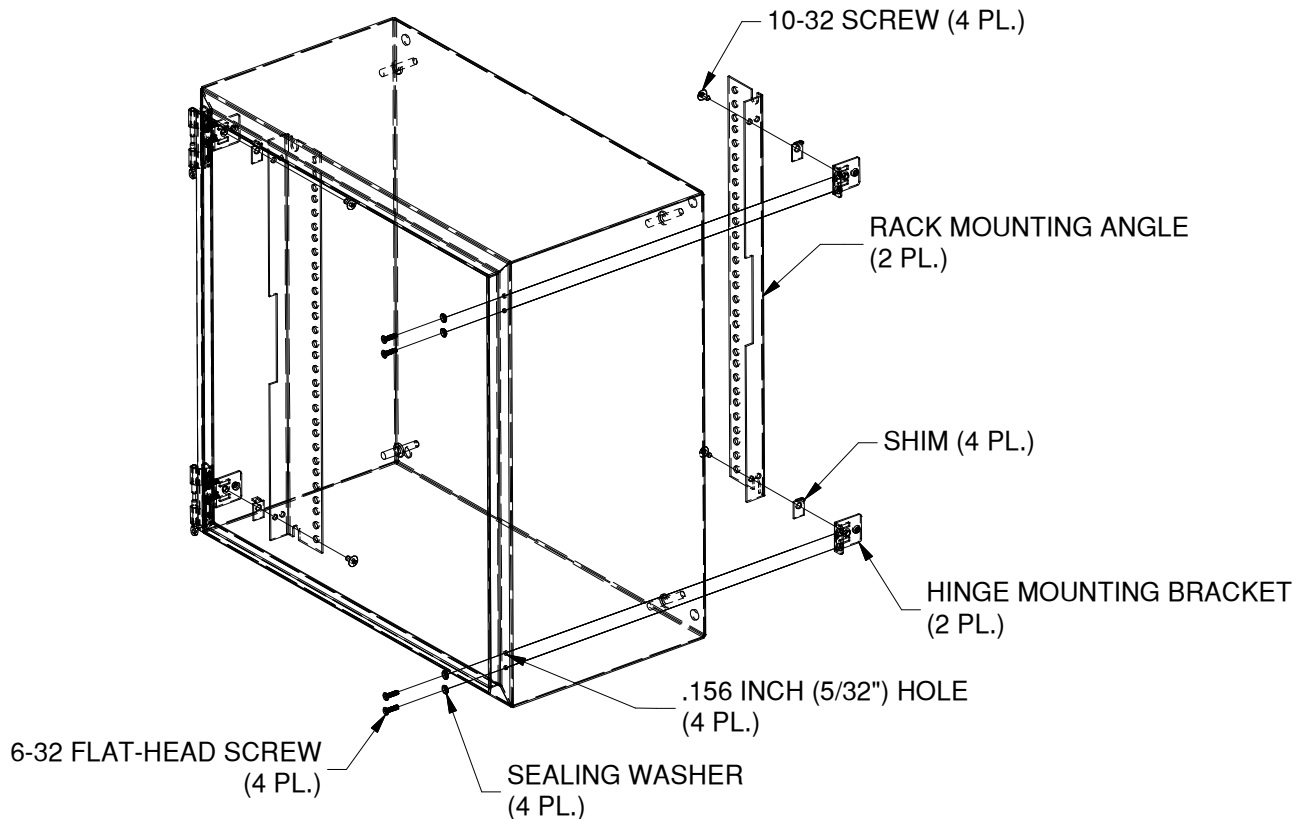
PHILLIPS SCREW DRIVER, 5/32" DRILL BIT, DRILL, PUNCH, 1/2" SOCKET

### INSTRUCTIONS:

1. USING DRILL TEMPLATE PROVIDED (SEE REVERSE), MARK AND DRILL FOUR .156 INCH (5/32") DIAMETER HOLES FOR 6-32 FLAT-HEAD SCREWS AND SEALING WASHERS.
  2. ORIENT THE HINGE MOUNTING BRACKETS AS SHOWN AND FASTEN TO THE INSIDE OF THE ENCLOSURE WITH THE 6-32 FLAT-HEAD SCREWS AND SEALING WASHERS PROVIDED. HINGE MOUNTING BRACKETS FOR HINGE SIDE COME PRE-INSTALLED IN HINGE ASSEMBLY.
  3. POSITION A SHIM IN THE TOP SLOT OF EACH HINGE MOUNTING BRACKET.
  4. CHOOSE ONE SET OF .156 INCH DIAMETER HOLES IN THE RACK ANGLES AND LINE THEM UP WITH HOLES IN SHIMS. ATTACH WITH 10-32 SCREWS PROVIDED.
- (RACK ANGLES ARE COMPATIBLE WITH ADJUSTABLE MOUNTING KIT)
5. MOUNTING RACK ANGLES CAN ALSO BE INSTALLED ON 5/16-18 COLLAR STUDS USING THE SLOTTED CUTOUTS ON THE ENDS OF THE MOUNTING RACK ANGLE AND 5/16-18 FLANGE NUTS. (5/16-18 FLANGE NUTS ARE PROVIDED WITH ULTIMATE STYLE ENCLOSURES AND ADJUSTABLE MOUNTING KITS)

### KIT INCLUDES

- 2) RACK MOUNTING ANGLES
- 2) HINGE MOUNTING BRACKETS
- 4) 10-32 SCREWS
- 4) SEALING WASHERS
- 4) 6-32 FLAT-HEAD SCREWS
- 4) SHIMS





# WIEGMANN®

FREEBURG , ILLINOIS , USA

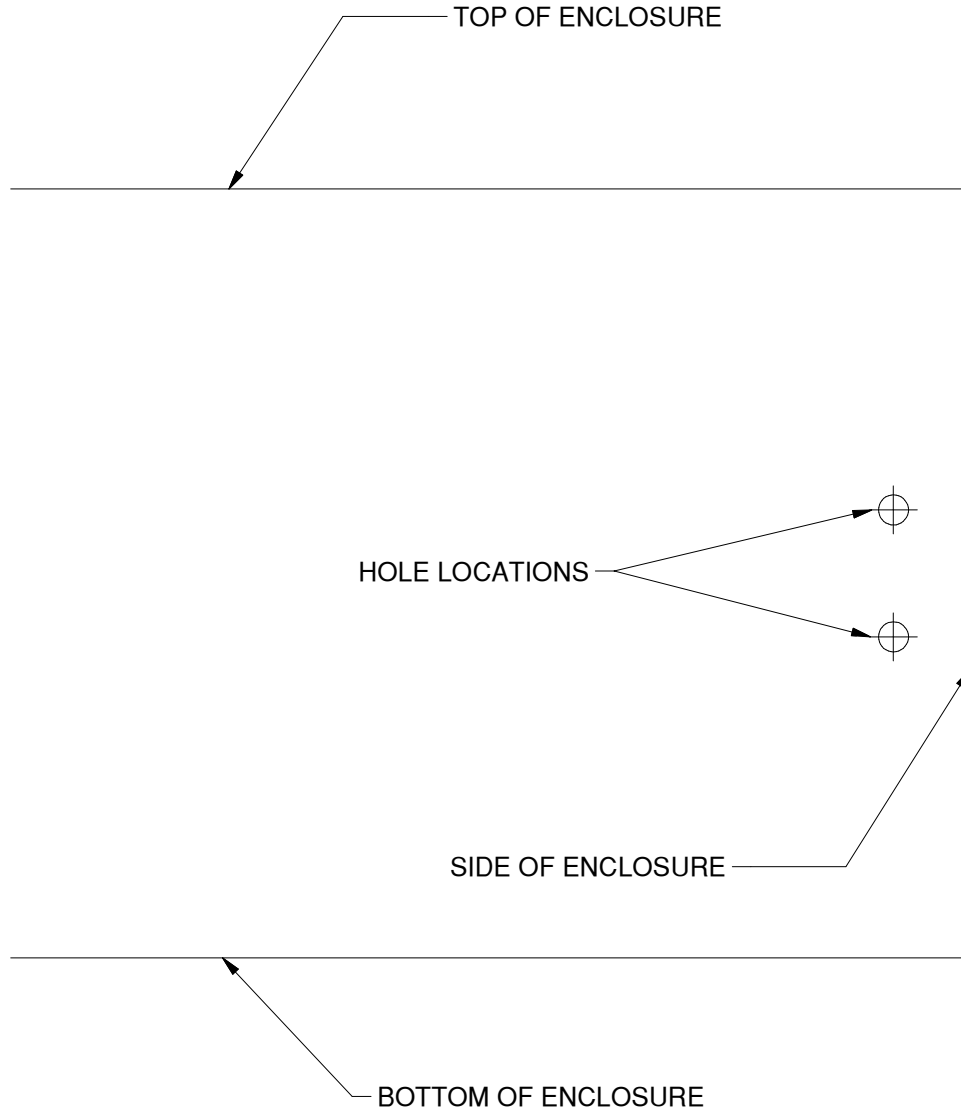
**HUBBELL ELECTRICAL PRODUCTS**  
A Division of HUBBELL  
INCORPORATED (Delaware)  
501 West Apple  
Freeburg, IL 62243 USA  
For Customer Service: 618-539-3193

DWG. NO. HWIHF33013

P.N. HFW33013

DATE 7/3/14

AFFECTED P.N. HFWRA20C, HFWRA24C, HFWRA30C, HFWRA36C, HFWRA48C



TEMPLATE