



WIEGMANN

FREEBURG, ILLINOIS, USA

HUBBELL ELECTRICAL PRODUCTS
 A Division of HUBBELL
 INCORPORATED (Delaware)
 501 West Apple
 Freeburg, IL 62243 USA
 For Customer Service: 618-539-3193

DWG. NO. HWI33071

P.N. 33071

DATE 6/24/14

AFFECTED P.N. WC10C, WC12C

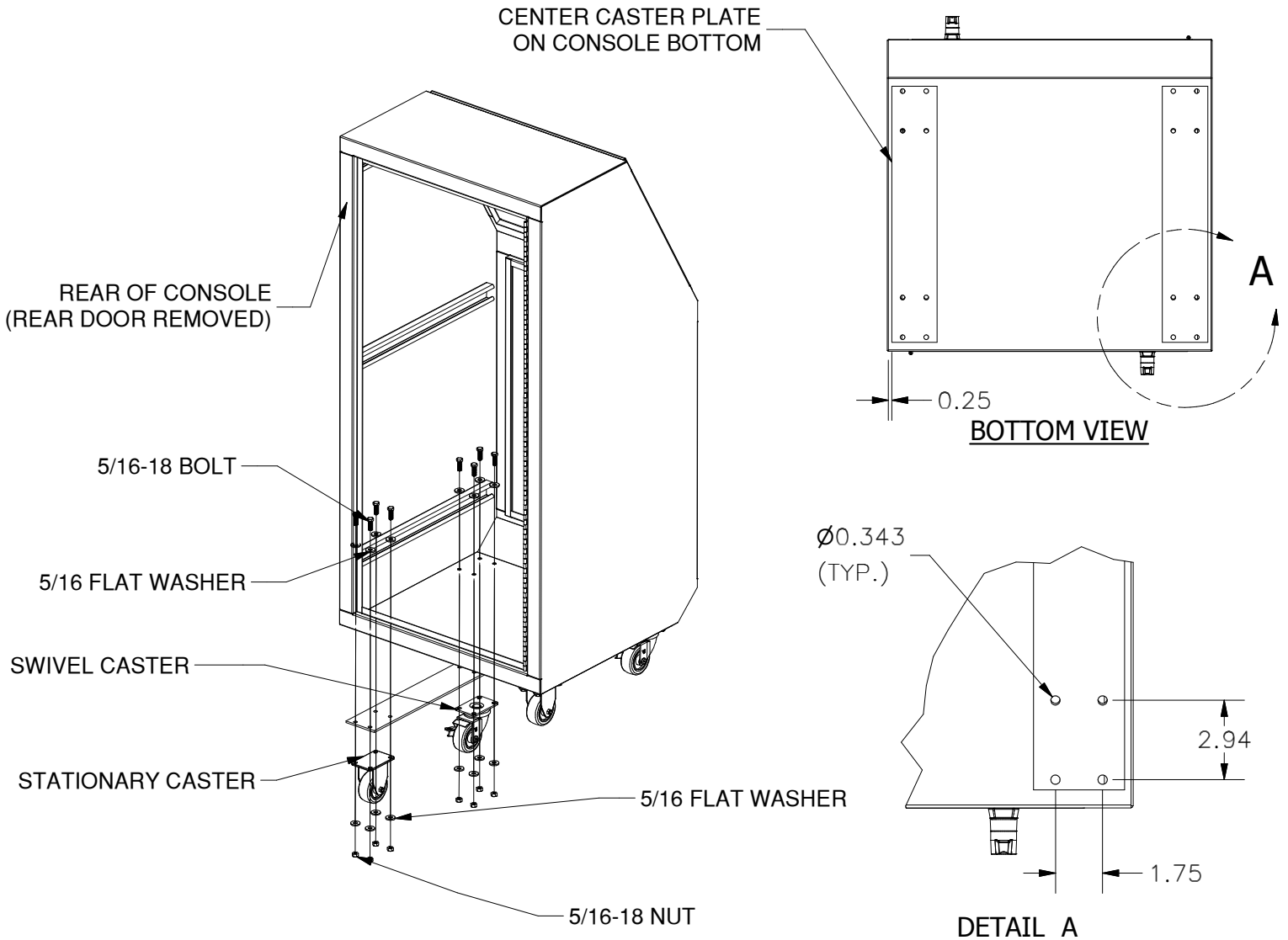
INSTALLATION, OPERATION, & MAINTENANCE DATA SHEET

CAUTION: Before installing, make sure you are compliant with area classifications - as failure to do so may result in bodily injury, death and property damage. Do not attempt installation until you are familiar with the following procedures. All installation must comply with the applicable Electrical Code(s). Make sure that all supply circuits are de-energized before starting installation or maintenance. Verify that the installation is grounded. Failure to ground will create electrical shock hazards, which can cause serious injury and or death.

Important: Please read these instructions carefully before installing or maintaining this equipment. Safe electrical practices should be followed at all times and this data should be used as a guide only.

TOOLS NEEDED:

11/32" DRILL BIT, DRILL, 1/2" SOCKET, 1/2" WRENCH



INSTRUCTIONS:

1. PLACE CASTER PLATE ON THE CONSOLE USING THE DIMENSIONS SHOWN.
2. USING CASTER PLATE AS A TEMPLATE, DRILL 11/32" DIAMETER HOLES THROUGH THE CONSOLE FLOOR.
3. INSTALL TWO STATIONARY CASTERS TO THE REAR OF THE ENCLOSURE AND TWO SWIVEL CASTERS TO THE FRONT OF THE ENCLOSURE. USE THE NUTS, BOLTS, AND WASHERS PROVIDED.

PARTS LIST	
QTY.	ITEM
2	CASTER PLATE
2	SWIVEL CASTER
2	STATIONARY CASTER
16	5/16-18 BOLT
16	5/16-18 HEX NUT
32	5/16 FLAT WASHER