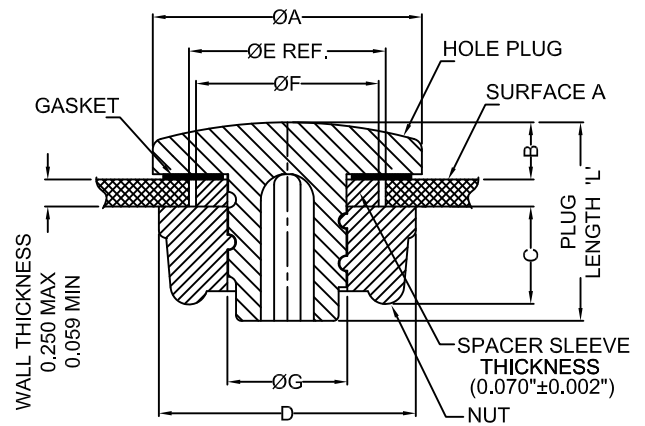


INSTRUCTIONS FOR ASSEMBLING HOLE PLUG

1. CHOOSE REQUIRED SIZE OF HOLE PLUG
2. DRILL HOLE TO SIZE ON BODY AS PER CHART PROVIDED.
IMPORTANT: ENSURE SURFACE "A" IS FREE FROM BURR & FIBER PULLOUT.
3. PLACE / STICK THE NITRILE RUBBER GASKET ON HOLE PLUG
4. SLIP ON APPROPRIATE SPACER SLEEVE OVER THREADED END OF THE PLUG, IF REQUIRED. (SEE CHART)
5. PUSH THE HOLE PLUG INTO THE DRILLED HOLE.
6. TIGHTEN NUT TO 1 lb-ft FOR HP SERIES 1 - 2
TIGHTEN NUT TO 2 lb-ft FOR HP SERIES 3 - 4
TIGHTEN NUT TO 10-12 lb-ft FOR HP SERIES 5 - 8
7. MAXIMUM WALL THICKNESS : 0.25" (6.35 mm)
MINIMUM WALL THICKNESS : 0.059" (16ga, 1.5 mm)
8. HOLE PLUGS CAN BE USED IN THINNER WALL SECTIONS LESS THAN .068" WHEN NOT UTILIZING THE SPACER SLEEVE
9. FOR USE ON A FLAT SURFACE OF A TYPE 1,3R,4,4X,6,6P AND/OR 12 ENCLOSURE

SECTION OF ASSEMBLY



L=18.24 [0.72"] FOR HP SERIES 1 - 4
L=23.95 [0.94"] FOR HP SERIES 5 - 8

INDUSTRY GUIDE FOR HOLE PLUG

KIT NUMBER	CONFIG.	Ø A	^{+0.05"} B _{-0.00"}	C	D ACROSS FLATS	Ø E REF. - NOM. HOLE DIA. RANGE	ØF	Ø G	COMMON INDUSTRY APPLICATIONS
HPSERIES 1	HP1	1.00" (25.40)	0.22" (5.59)	0.35" (8.89)	0.88" (22.35)	0.50" - 0.56" (12.70 - 14.29)	N/A	0.44" (11.18)	1/2" DIA.HOLE
	HP2					0.63" - 0.69" (16.00 - 17.46)	0.56" (14.22)		5/8" DIA.HOLE
	HP3					0.75" - 0.81" (19.05 - 20.64)	0.68" (17.27)		3/4" DIA.HOLE
HPSERIES 1.5	HP3.5	1.20" (30.48)	0.22" (5.59)	0.33" (8.38)	1.04" (26.39)	0.88" (22.35)	N/A	0.81" (20.57)	1/2" CONDUIT
HPSERIES 2	HP4	1.50" (38.10)	0.22" (5.59)	0.38" (9.63)	1.38" (35.05)	0.88" - 1.00" (22.35 - 25.4)	N/A	0.85" (21.59)	1/2" CONDUIT, 22MM PB
	HP5					1.06" - 1.12" (26.92 - 28.45)	1.03" (26.16)		3/4" CONDUIT
	HP6					1.22" - 1.28" (30.73 - 32.51)	1.19" (30.22)		30mm PB
HPSERIES 3	HP7	2.00" (50.80)	0.22" (5.59)	0.38" (9.63)	1.88" (47.75)	1.38" - 1.50" (35.05 - 38.10)	N/A	1.35" (34.29)	1" CONDUIT
	HP8					1.69" - 1.75" (42.67 - 44.45)	1.65" (41.91)		1 1/4" CONDUIT
HPSERIES 4	HP9	2.75" (69.85)	0.22" (5.59)	0.41" (10.41)	2.63" (66.67)	2.00" - 2.12" (50.80 - 53.85)	N/A	1.97" (50.04)	1 1/2" CONDUIT
	HP10					2.50" - 2.56" (63.50 - 65.09)	2.44" (61.89)		2" CONDUIT
HPSERIES 5	HP11	3.38" (85.85)	0.22" (5.59)	0.34" (8.63)	3.38" (85.85)	3.00" (76.20)	N/A	2.97" (75.44)	2 1/2" CONDUIT
HPSERIES 6	HP12	4.00" (101.60)	0.22" (5.59)	0.34" (8.63)	4.00" (101.60)	3.62" (91.95)	N/A	3.59" (91.19)	3" CONDUIT
HPSERIES 7	HP13	4.50" (114.30)	0.22" (5.59)	0.38" (9.63)	4.50" (114.30)	4.12" (104.65)	N/A	4.09" (103.88)	3 1/2" CONDUIT
HPSERIES 8	HP14	5.00" (127.00)	0.22" (5.59)	0.41" (10.41)	5.00" (127.00)	4.62" (117.35)	N/A	4.59" (116.58)	4" CONDUIT