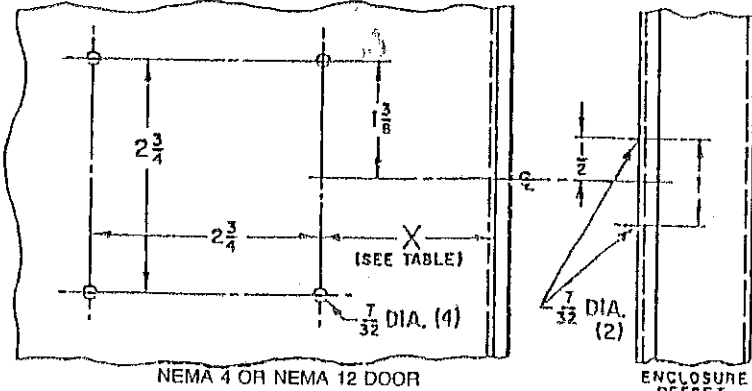




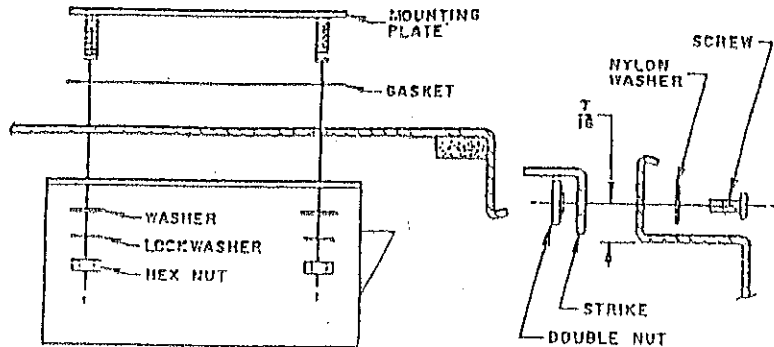
# WIEGMANN™

## FOR NEMA 4 & NEMA 12 ENCLOSURES

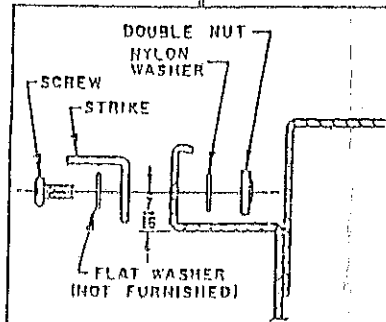
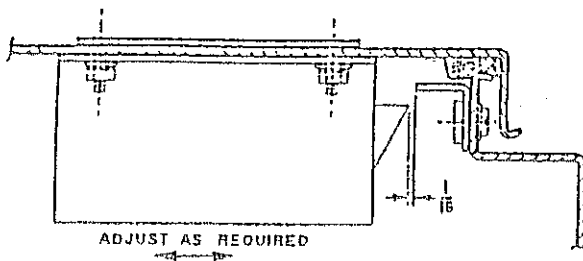
1. DRILL 4 HOLES IN DOOR AND 2 HOLES IN OFFSET.



2. INSTALL INTERLOCK AND STRIKE AS SHOWN.



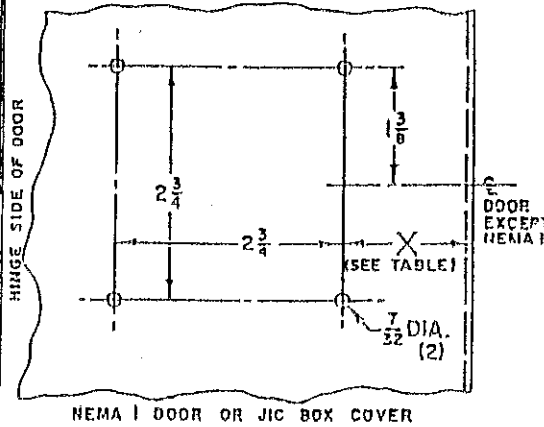
3. ADJUST INTERLOCK AS SHOWN.



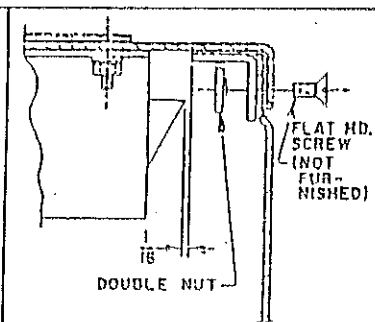
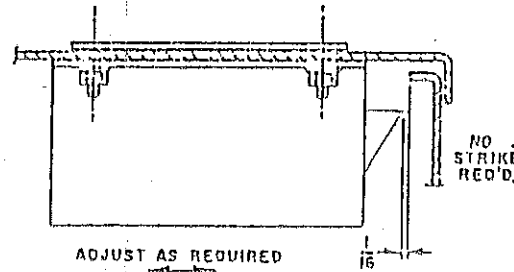
**DETAIL A**  
FOR BULLETIN A-15  
FLUSH MOUNTED ENCLOSURES

## FOR NEMA 1, JIC & LARGE JIC

1. DRILL 4 HOLES IN COVER.



2. INSTALL AND ADJUST INTERLOCK AS SHOWN.



**DETAIL B**  
FOR BULLETIN A-1  
NEMA 1 ENCLOSURES

X	BULLETIN NO.	BOX DESCRIPTION
2-1/8	A-4 A-12 A-13	NEMA 4 AND NEMA 12 SINGLE DOOR ENCLOSURES
2-3/16	A-4	TWO DOOR NEMA 4 ENCLOSURES
3	A-15	FLUSH MOUNTED NEMA 12 SINGLE DOOR ENCLOSURES (SEE DETAIL A)
2	A-1	NEMA 1 WHEN "A" DIMENSION (BOX HEIGHT) IS LESS THAN 30" (SEE DETAIL B)
1-11/16	A-1	NEMA 1 WHEN "A" DIMENSION (BOX HEIGHT) IS 30" OR MORE
2-3/16	A-1	EXTRA LARGE NEMA 1
1-9/16	A-51 A-53	JIG BOXES TYPE CH, CHS, CHAL, CHNF, CHNFSS GIE INSTRUMENT BOX EMI / FRI JIC BOX
2-1/16	A-52	LARGE JIC BOXES WHEN "B" DIMENSION (BOX WIDTH) IS 24" OR LESS
2-9/16	A-52	LARGE JIC BOXES WHEN "B" DIMENSION (BOX WIDTH) IS MORE THAN 24"

### HUBBELL WIEGMANN

Installation Instructions  
for a WAEK15NDH

Date: 11-20-95 Part No. 33060

DWG. NO. HW112095