

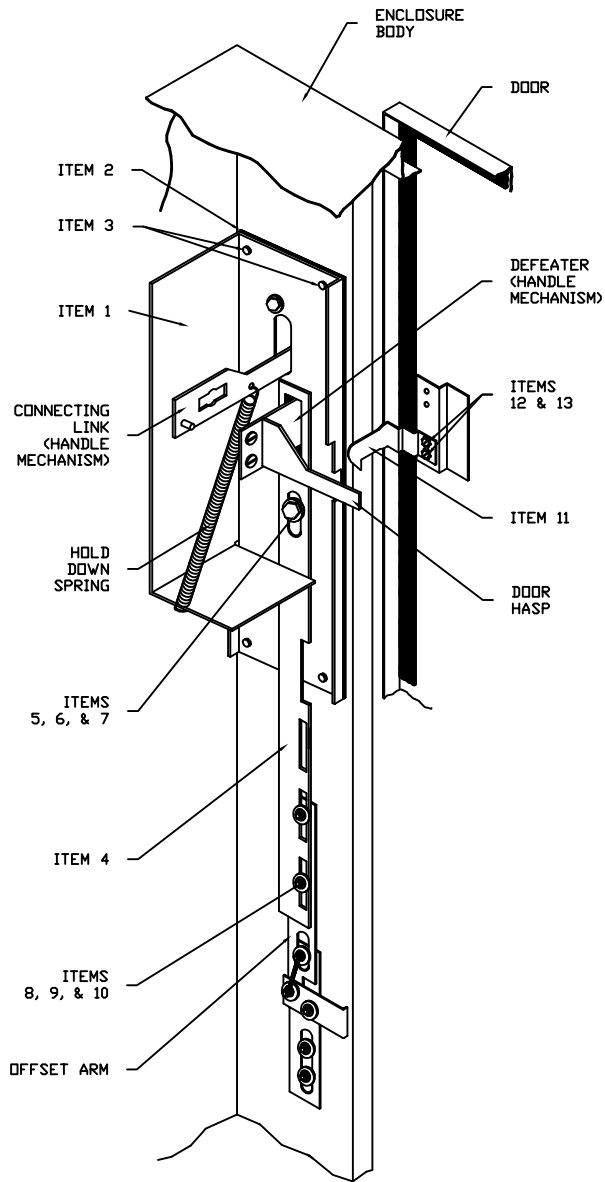


WIEGMANN

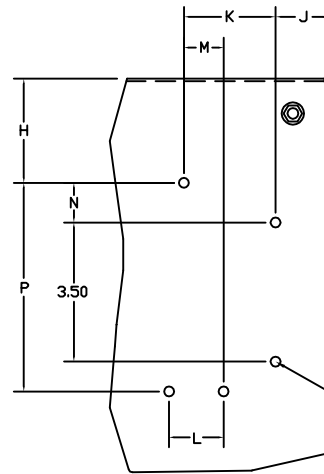
FREBURG, ILLINOIS, USA

WA21CHVA Operator Adapter Plate Cutler-Hammer Flex Shaft

ASSY VIEW, R.H. FLANGE MOUNTING



PANEL LAYOUTS - R.H. FLANGE MOUNTING



USE WITH TABLES 1, 3, & 4

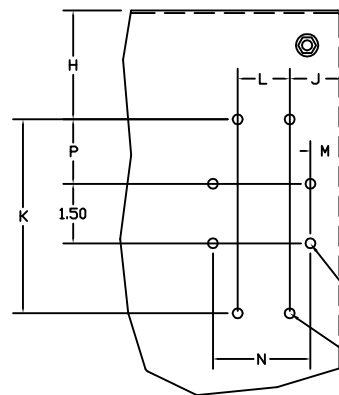
HOLE PATTERN FOR

DISCONNECT SWITCH
C361NC/C361SC (30A)
C361ND/C361SD (60A)
C361NE/C361SE (100A)

#10-32 UNF, TYP.

HOLE PATTERN FOR

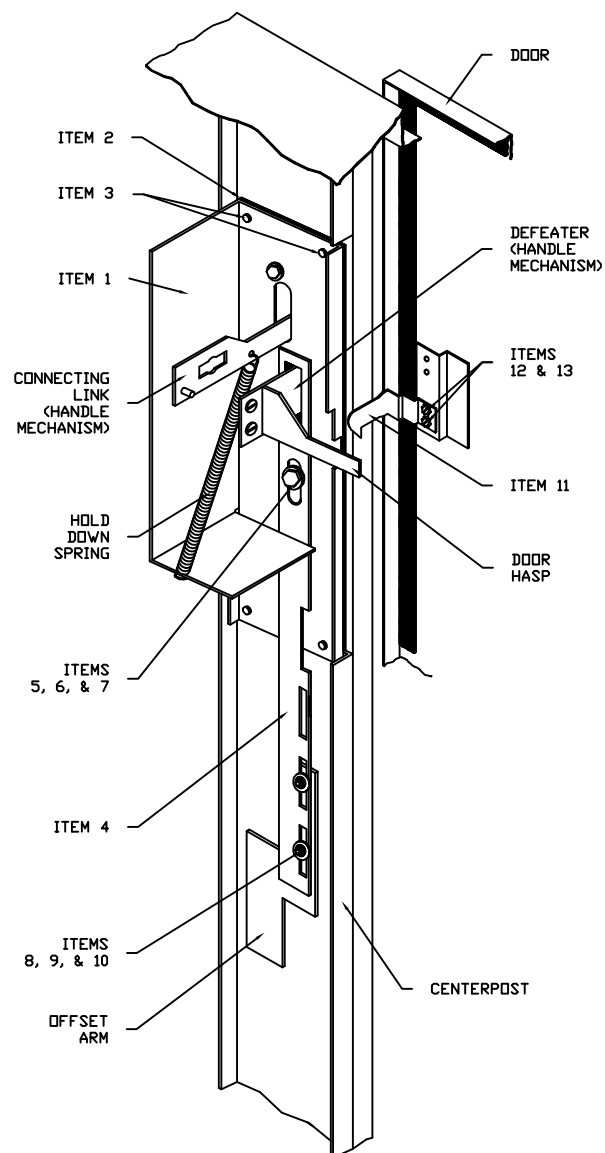
CIRCUIT BREAKER OR DISCONNECT SWITCH	FRAME SIZE
HMCP, FS, FH, EHD FDB, FD, HFD	150A
HMCP, JS, JH, JL, JD JDB, HJD, JDC	250A
HMCP, KH, KS, KD DK, KDB, HKD	400A
LH, LS, LC	600A
MH, MS, MC	800A
NH, NS, NC	1200A
C361NF/C361SF (200A)	



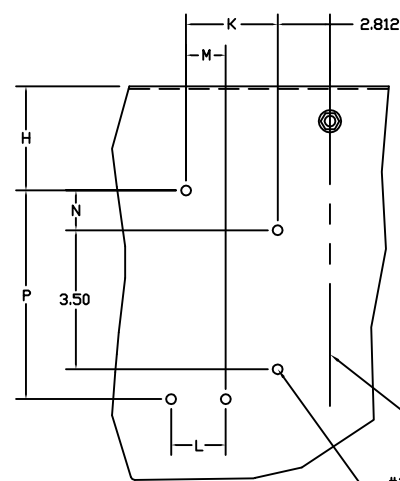
(4) 1/4-20 HOLES FOR OPERATING MECHANISM AS REQUIRED

(4) MOUNTING HOLES FOR DISCONNECT OR CIRCUIT BREAKER (SEE TABLE)

ASSY VIEW, CENTERPOST MOUNTING



PANEL LAYOUTS - CENTERPOST MOUNTING



USE WITH TABLE 2

HOLE PATTERN FOR

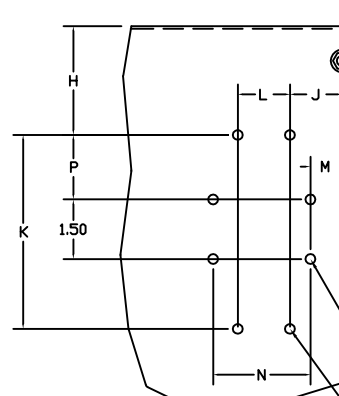
DISCONNECT SWITCH
C361NC/C361SC (30A)
C361ND/C361SD (60A)
C361NE/C361SE (100A)

CENTERLINE OF PANEL

#10-32 UNF, TYP.

HOLE PATTERN FOR

CIRCUIT BREAKER OR DISCONNECT SWITCH	FRAME SIZE
HMCP, FS, FH, EHD FDB, FD, HFD	150A
HMCP, JS, JH, JL, JD JDB, HJD, JDC	250A
HMCP, KH, KS, KD DK, KDB, HKD	400A
LH, LS, LC	600A
MH, MS, MC	800A
NH, NS, NC	1200A
C361NF/C371SF (200A)	



CENTERLINE OF PANEL

(4) 1/4-20 HOLES FOR OPERATING MECHANISM AS REQUIRED

(4) MOUNTING HOLES FOR DISCONNECT OR CIRCUIT BREAKER (SEE TABLE)

INSTALLATION INSTRUCTIONS

FOR INSTALLATION OF CUTLER-HAMMER OPERATING MECHANISMS FOR C361 DISCONNECT SWITCHES AND C371 CIRCUIT BREAKERS IN WIEGMANN ENCLOSURES

- STEP 1** INSTALL ADAPTER PLATE (ITEM 1) AND PLATE GASKET (ITEM 2) ON THE INSIDE OF THE ENCLOSURE, BEHIND THE RECTANGULAR OPENING PROVIDED. SECURE IN PLACE WITH 4 SCREWS (ITEM 3).
- STEP 2** ASSEMBLE THE CUTLER-HAMMER C361 OR C371 HANDLE MECHANISM TO THE ADAPTER PLATE. OMIT CAP SCREW AND LOCKWASHER WHICH FITS INTO THE BOTTOM HOLE OF C-H HANDLE MECHANISM. OMIT THE C-H SPRING BRACKET.
- STEP 3** INSTALL THE SLIDE ARM (ITEM 4) OVER THE DEFEATER PART OF THE C-H HANDLE MECHANISM AS SHOWN. NOTE THAT THE NOTCH IN THE SLIDE ARM IS POSITIONED TOWARD THE DOOR OPENING. PLACE THE SMALL DIAMETER END OF THE SHOULDER COLLAR (ITEM 5) THROUGH THE OVAL SLOT IN THE SLIDE ARM. INSTALL LONG CAP SCREW (ITEM 6) WITH LOCKWASHER (ITEM 7) THROUGH SHOULDER COLLAR INTO THE BOTTOM MOUNTING HOLE OF THE C-H HANDLE MECHANISM AND TIGHTEN. THE SLIDE ARM SHOULD MOVE UP AND DOWN SMOOTHLY. INSTALL C-H DOOR HASP PER C-H INSTRUCTIONS.
- FOR CENTERPOST INSTALLATION ONLY, CUT 2.50 INCHES OFF BOTTOM END OF SLIDE ARM (ITEM 4). BOTTOM END OF SLIDE ARM HAS RECTANGULAR HOLES ONLY.
- STEP 4** ATTACH THE BOTTOM OF THE SLIDE ARM (ITEM 4) TO THE OFFSET ARM OF THE OPERATOR RELEASE MECHANISM. USE TWO FLAT WASHERS (ITEM 8), TWO LOCKWASHERS (ITEM 9), AND TWO HEX NUTS (ITEM 10). DO NOT TIGHTEN UNTIL PARTS ARE ADJUSTED PER STEP 5B.
- STEP 5** THE HANDLE SAFETY LOCK MECHANISM IS ADJUSTABLE IN TWO PLACES FOR RIGHT HAND FLANGE INSTALLATIONS AND ONE PLACE FOR CENTER POST INSTALLATIONS.
- (A) CHECK THE ADJUSTMENT OF THE FACTORY INSTALLED ROLLER BRACKET. THE DOOR LATCH SHOULD HIT AGAINST THE LATCH STOP PORTION OF THE ROLLER BRACKET WHEN

STEP 5A CONTINUED

THE DOOR IS CLOSED AND LATCHED. ADJUST UP OR DOWN AS REQUIRED. THE ATTACHED MECHANISM WILL THEN PROVIDE THE NECESSARY UP-DOWN MOTION TO OPERATE THE DEFEATER IN THE C-H HANDLE MECHANISM (FOR RIGHT HAND FLANGE INSTALLATION ONLY).

(B) ADJUST THE LENGTH OF THE SLIDE ARM ASSEMBLY. WITH PROPER ADJUSTMENT OF THE SLIDE ARM, THE SAFETY LOCK (IN C-H HANDLE MECHANISM) SHOULD RELEASE JUST BEFORE THE MASTER DOOR IS FULLY LATCHED. LENGTHEN SLIDE ARM IF SAFETY LOCK RELEASES TOO SOON. SHORTEN SLIDE ARM IF SAFETY LOCK RELEASES TOO LATE.

- STEP 6** ATTACH THE DOOR CATCH (ITEM 11), PROVIDED BY WIEGMANN, TO THE TAPPED SPACER ON THE DOOR USING THE BOTTOM SET OF MOUNTING HOLES. USE TWO SCREWS (ITEM 12), AND LOCKWASHERS (ITEM 13). THE DOOR CATCH PREVENTS THE DOOR FROM BEING OPENED WHEN THE C-H HANDLE MECHANISM IS IN THE "ON" POSITION. THE DOOR CATCH MAY BE ADJUSTED UP OR DOWN TO HOOK PROPERLY ON THE DOOR HASP. THE DOOR CATCH MUST BE POSITIONED SO IT JUST CLEARS THE TOP OF THE DOOR HASP WHEN THE C-H HANDLE MECHANISM IS IN THE EXTREME "OFF" POSITION.

- STEP 7** DRILL AND TAP HOLES IN PANEL AS SHOWN IN DIAGRAM AND TABLE. SEE CUTLER-HAMMER INSTRUCTIONS FOR LOCATING HOLES FOR FUSE BLOCKS.

- STEP 8** INSTALL PANEL IN ENCLOSURE

- STEP 9** MOUNT DISCONNECT SWITCH OR CIRCUIT BREAKER USING C-H INSTRUCTIONS AND PARTS.

TABLE 1 - RIGHT HAND FLANGE MOUNTING

CIRCUIT BREAKER OR DISCONNECT SWITCH	FRAME SIZE	H 60-1/2 HSDH	H 70-1/2 HSDH	J	K	L	M	N	P	SIZE OF MOUNTING HOLES
C361NC/C361SC (30A) C361ND/C361SD (60A)	-	4.594	10.094	1.312	2.800	3.00	1.812	1.150	4.875	-
C361NE/C361SE (100A)	-	4.734	10.234	1.312	2.307	4.00	1.109	1.013	4.75	-
C361NF/C361SF (200A)	-	-	7.969	.922	15.50	8.50	-	-	-	1/4-20 UNC
HMCP, FS, FH, EHD FDB, FD, HFD	150A	6.484	11.984	2.734	4.500	1.375	-	-	-	8-32 UNC
JS, JH, JL	250A	6.438	11.938	3.250	7.25	1.375	.422	6.948	2.75	10-32 UNF
HMCP	250A	6.438	11.938	3.250	7.25	1.375	.422	6.948	2.75	1/4-20 UNC
KH, KS, DK, KDB, KD, HKD, KDC	400A	6.00	11.50	3.078	8.438	1.719	.422	6.948	3.18	1/4-20 UNC
HMCP	400A	6.00	11.50	3.078	8.438	1.719	.422	6.948	4.00	1/4-20 UNC
LH, LS, LC	600A	-	9.594	4.00	9.53	2.75	.344	10.05	4.32	1/4-20 UNC

TABLE 2 - CENTERPOST MOUNTING

CIRCUIT BREAKER OR DISCONNECT SWITCH	FRAME SIZE	H 60-1/2 HSDH	H 70-1/2 HSDH	J	K	L	M	N	P	SIZE OF MOUNTING HOLES
C361NC/C361SC (30A) C361ND/C361SD (60A)	-	4.594	10.094	-	2.800	3.00	1.812	1.150	4.875	-
C361NE/C361SE (100A)	-	4.734	10.234	-	2.307	4.00	1.109	1.013	4.75	-
C361NF/C361SF (200A)	-	-	7.969	2.422	15.50	8.50	-	-	-	1/4-20 UNC
HMCP, FS, FH, EHD FDB, FD, HFD	150A	6.484	11.984	4.234	4.500	1.375	-	-	-	8-32 UNC
JS, JH, JL	250A	6.438	11.938	4.75	7.25	1.375	1.922	6.948	2.75	10-32 UNF
HMCP	250A	6.438	11.938	4.75	7.25	1.375	1.922	6.948	2.75	1/4-20 UNC
KH, KS, DK, KDB, KD, HKD, KDC	400A	6.00	11.50	4.578	8.438	1.719	1.922	6.948	3.18	1/4-20 UNC
HMCP	400A	6.00	11.50	4.578	8.438	1.719	1.922	6.948	4.00	1/4-20 UNC
LH, LS, LC	600A	-	9.594	5.50	9.53	2.75	1.844	10.05	4.32	1/4-20 UNC

NOTE: 30A, 60A, 100A & 200A DISCONNECT SWITCHES AND 150A, 250A & 400A CIRCUIT BREAKERS CAN BE INSTALLED IN 18.12 AND 24.12 INCH DEEP ENCLOSURES BY USING A C-H C371CSI CONNECTING ROD.

TABLE 3

CIRCUIT BREAKER OR DISCONNECT SWITCH	FRAME SIZE	H 60-1/2 HSDH	H 70-1/2 HSDH	H 90-1/2 HSDH	J	K	L	M	N	P	SIZE OF MOUNTING HOLES
C361NC/C361SC (30A) C361ND/C361SD (60A)	-	6.609	12.109	15.109	1.312	2.800	3.00	1.812	1.150	4.875	-
C361NE/C361SE (100A)	-	6.734	12.234	15.234	1.312	2.307	4.00	1.109	1.013	4.75	-
C361NF/C361SF (200A)	-	4.484	9.984	12.984	.938	15.50	8.50	-	-	-	1/4-20 UNC
HMCP, FS, FH, EHD FDB, FD, HFD	150A	8.484	13.984	16.984	2.750	4.500	1.375	-	-	-	8-32 UNC
JS, JH, JL	250A	8.438	13.938	16.938	3.250	7.25	1.375	.438	6.948	2.75	10-32 UNF
HMCP	250A	8.438	13.938	16.938	3.250	7.25	1.375	.438	6.948	2.75	1/4-20 UNC
KH, KS, DK, KDB, KD, HKD, KDC	400A	8.00	13.50	16.50	3.078	8.438	1.719	.438	6.948	3.18	1/4-20 UNC
HMCP	400A	8.00	13.50	16.50	3.078	8.438	1.719	.438	6.948	4.00	1/4-20 UNC
LH, LS, LC	600A	6.109	11.609	14.609	4.00	9.53	2.75	.359	10.05	4.32	1/4-20 UNC
MH, MS, MC	800A	-	8.047	11.047	4.00	14.75	2.75	.359	10.05	7.88	1/4-20 UNC
NH, NS, NC	1200A	-	8.047	11.047	4.00	14.75	2.75	.359	10.05	7.88	1/4-20 UNC

NOTE: 30A, 60A, 100A & 200A DISCONNECT SWITCHES AND 150A, 250A & 400A CIRCUIT BREAKERS CAN BE INSTALLED IN 1 AND 2 DOOR ENCLOSURES BY USING A C-H C371CSI CONNECTING ROD KIT (NOT NEEDED FOR 3, 4, AND 5 DOOR ENCLOSURES).

TABLE 4

CIRCUIT BREAKER OR DISCONNECT SWITCH	FRAME SIZE	H	J 84.8 VITE	J 90.6 VITE	K	L	M 84.8 VITE	M 90.6 VITE	N	P	SIZE OF MOUNTING HOLES
C361NC/C361SC (30A) C361ND/C361SD (60A)	-	6.359	1.266	1.656	2.800	3.00	1.812	1.812	1.150	4.875	-
C361NE/C361SE (100A)	-	6.484	1.266	1.656	2.307	4.00	1.109	1.109	1.013	4.75	-
C361NF/C361SF (200A)	-	4.234	.891	1.281	15.50	8.50	-	-	-	-	1/4-20 UNC
HMCP, FS, FH, EHD FDB, FD, HFD	150A	8.234	2.703	3.094	4.500	1.375	-	-	-	-	8-32 UNC
JS, JH, JL	250A	8.188	3.219	3.094	7.25	1.375	.391	.781	6.948	2.75	10-32 UNF
HMCP	250A	8.188	3.219	3.594	7.25	1.375	.391	.781	6.948	2.75	1/4-20 UNC
KH, KS, DK, KDB, KD, HKD, KDC	400A	7.75	3.047	3.422	8.438	1.719	.391	.781	6.948	3.18	1/4-20 UNC
HMCP	400A	7.75	3.047	3.422	8.438	1.719	.391	.781	6.948	4.00	1/4-20 UNC
LH, LS, LC	600A	5.859	3.969	4.344	9.53	2.75	.312	.703	10.05	4.32	1/4-20 UNC

NOTE: THE MOUNTING PANEL IN THE TABLE 4 ENCLOSURE IS A VARIABLE DEPTH TYPE AND COULD BE POSITIONED OUTSIDE THE CUTLER-HAMMER MINIMUM AND MAXIMUM DEPTH REQUIREMENTS. WHEN POSITIONING THE PANEL, CONSULT YOUR CUTLER-HAMMER INSTRUCTIONS FOR THE MOUNTING DEPTH RANGE OF YOUR DISCONNECT.

PARTS LIST

ITEM NO.	PART NAME	QTY.
1.	ADAPTER PLATE, C-H	1
2.	GASKET, PLATE	1
3.	SCREW, 1/4-20 X 1/2 PAN HD	4
4.	SLIDE ARM	1
5.	SHOULDER COLLAR	1
6.	SCREW, 1/4-20 X 7/8 HEX HD	1
7.	LOCKWASHER, 1/4 SPRING	1
8.	WASHER, FLAT	2
9.	LOCKWASHER, 1/4 INT.	2
10.	NUT, 1/4-20 HEX	1
11.	DOOR CATCH	2
12.	SCREW, #10-32 X 3/8 PAN HD	2
13.	LOCKWASHER, #10	2
14.	LABEL (EXTRA)	1