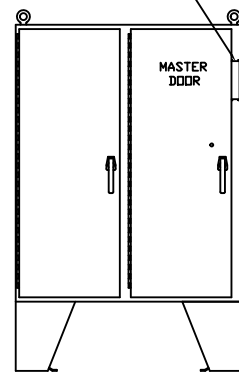




WIEGMANN
FREEBURG, ILLINOIS, USA

FOR INSTALLATION OF SQUARE "D" DISCONNECT SWITCHES AND CIRCUIT BREAKERS USING CLASS 9422 VARIABLE DEPTH OPERATING MECHANISMS IN WIEGMANN TWO DOOR ENCLOSURES WITH DISCONNECT ON RIGHT FLANGE. THESE INSTRUCTIONS APPLY ONLY TO THE FOLLOWING.

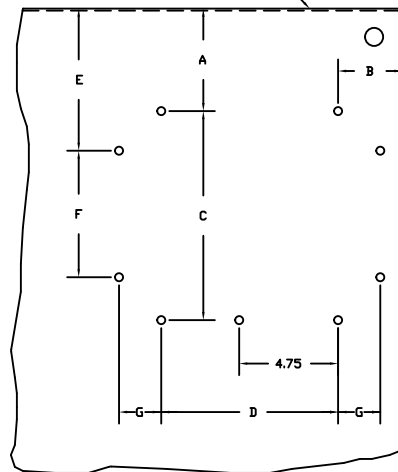
THIS INSTRUCTION SHEET IS FOR DISCONNECT ON RIGHT FLANGE



ENCLOSURE CATALOG NUMBERS

WA60X4912U	WA72X6112U
WA60X4918U	WA72X7312U
WA60X6112U	WA72X6118U
WA60X6118U	WA72X7318U
	WA72X7324U

TOP OF PANEL



PART # 33049

30 AND 60 AMP DISCONNECT SWITCHES
100 AND 200 AMP DISCONNECT SWITCHES
FAL AND FAH CIRCUIT BREAKERS
KAL AND KAH CIRCUIT BREAKERS
LAL AND LAH CIRCUIT BREAKERS

NOTE: THE FOLLOWING 8 CIRCUIT BREAKER SIZES ARE TO BE INSTALLED IN THE 72-1/8 HIGH ENCLOSURES ONLY.

- STEP 1 INSTALL HANDLE RETURN SPRING (FURNISHED WITH SQUARE D OPERATING HANDLE) THRU HOLE PROVIDED IN MOUNTING PLATE (ITEM 1) AS SHOWN. THE LONG HOOKED END OF SPRING GOES THRU HOLE IN MOUNTING PLATE. THE SHORT HOOK ON OTHER END WILL BE ATTACHED TO ROD LATER.
- STEP 2 INSTALL MOUNTING PLATE (ITEM 1) (WITH SPRING IN PLACE) AND PLATE GASKET (ITEM 2) ON THE INSIDE OF THE ENCLOSURE, BEHIND THE RECTANGULAR OPENING PROVIDED. SECURE IN PLACE WITH 4 SCREWS (ITEM 3).
- STEP 3 DISCARD THE SQUARE D STIFFENER BRACKET WHICH IS NORMALLY INSTALLED INSIDE THE ENCLOSURE FLANGE.
- STEP 4 ASSEMBLE THE OPERATING HANDLE TO THE MOUNTING PLATE WHICH WAS INSTALLED IN THE ENCLOSURE IN STEP 1. OMIT CAP SCREW AND LOCKWASHER WHICH FITS INTO BOTTOM HOLE OF SQUARE D OPERATING HANDLE.
- STEP 5 INSTALL THE SLIDE ARM (ITEM 4) OVER THE PROJECTING PART OF THE HANDLE ASSEMBLY (ON SQUARE D OPERATING HANDLE) WITH NOTCH TOWARD DOOR OPENING AS SHOWN. PLACE THE SMALLER DIAMETER END OF THE SHOULDER COLLAR (ITEM 5) THROUGH THE OVAL SLOT IN THE SLIDE ARM. INSTALL LONG CAP SCREW (ITEM 6) WITH LOCKWASHER (ITEM 7) THROUGH SHOULDER COLLAR INTO THE BOTTOM MOUNTING HOLE OF THE SQUARE D OPERATING HANDLE AND TIGHTEN. THE SLIDE ARM AND INTERLOCK ARM SHOULD MOVE UP AND DOWN SMOOTHLY. INSTALL LOCKING LEVER EXTENSION (SQUARE D PART) PER SQUARE D INSTRUCTIONS.
- STEP 6 ATTACH THE BOTTOM OF THE SLIDE ARM (ITEM 4) TO THE OFFSET ARM OF THE LOCK RELEASE MECHANISM. USE TWO FLAT WASHERS (ITEM 8), TWO LOCKWASHERS (ITEM 9), AND TWO HEX NUTS (ITEM 10). DO NOT TIGHTEN UNTIL PARTS ARE ADJUSTED. (SEE STEP 7B)
- STEP 7 THE HANDLE SAFETY LOCK RELEASE MECHANISM IS ADJUSTABLE IN TWO PLACES.
- (A) CHECK THE ADJUSTMENT OF THE FACTORY INSTALLED ROLLER BRACKET. THE DOOR LATCH SHOULD HIT AGAINST THE LATCH STOP PORTION OF THE ROLLER BRACKET WHEN THE DOOR IS CLOSED AND LATCHED. ADJUST UP OR DOWN IF NECESSARY. THE ATTACHED MECHANISM WILL THEN PROVIDE THE NECESSARY UP/DOWN MOTION REQUIRED TO OPERATE THE RELEASE MECHANISM.
- (B) ADJUST THE LENGTH OF THE SLIDE ARM ASSEMBLY WITH PROPER ADJUSTMENT OF THE SLIDE ARM, THE SAFETY LOCK ON SQUARE D HANDLE OPERATOR SHOULD RELEASE JUST BEFORE THE MASTER DOOR IS FULLY LATCHED. LENGTHEN SLIDE ARM IF SAFETY LOCK RELEASES TOO SOON. SHORTEN SLIDE ARM IF SAFETY LOCK RELEASE TOO LATE.
- STEP 8 ATTACH THE DOOR CATCH (ITEM 11), PROVIDED BY WIEGMANN, TO THE TAPPED SPACER ON THE DOOR USING THE BOTTOM SET OF MOUNTING HOLES. USE TWO SCREWS (ITEM 12) AND LOCKWASHERS (ITEM 13). THE DOOR CATCH PREVENTS THE DOOR FROM BEING OPENED WHEN THE SWITCH IS IN THE "ON" POSITION. THE DOOR CATCH MAY BE EASILY BENT UP OR DOWN TO HOOK PROPERLY ON THE LOCKING LEVER EXTENSION OF THE SQUARE D HANDLE OPERATOR.
- STEP 9 DRILL AND TAP HOLES IN PANEL AS SHOWN IN DIAGRAM AND TABLE. SEE SQUARE D INSTRUCTION FOR LOCATING HOLES FOR FUSE CLIPS.
- STEP 10 MOUNT SWITCH OR CIRCUIT BREAKER USING SQUARE D INSTRUCTIONS AND PARTS SQUARE D OPERATING ROD AND STIFFENER ROD, IF USED, MUST BE CUT OFF PER SQUARE D INSTRUCTIONS. SEE TABLE FOR "L" LENGTH REQUIRED FOR 12-1/8 OR 18-1/8 DEEP ENCLOSURES.

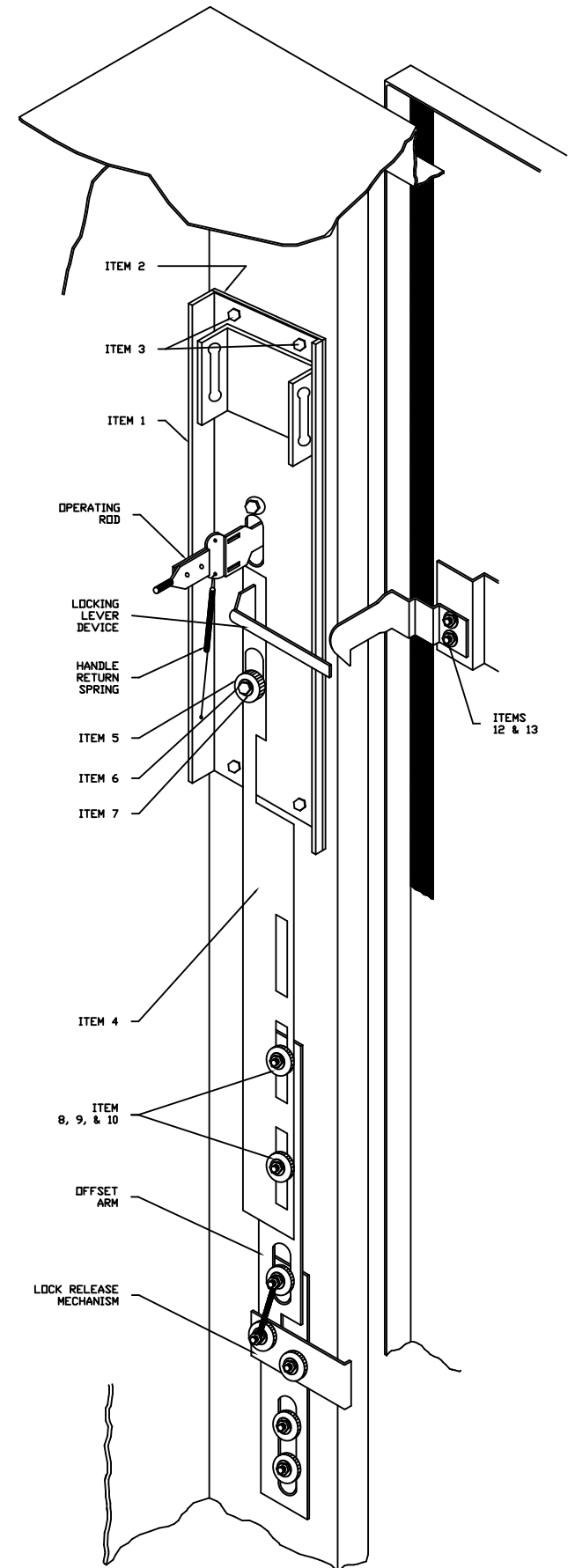
SQUARE D CLASS 9422 SWITCHES AND CIRCUIT BREAKERS	HOLE SIZE	HOLE DIMENSIONS																												
		FOR 60-1/8 ENCLOSURES												FOR 12-1/8 DEEP ENCLOSURES		FOR 18-1/8 DEEP ENCLOSURES		FOR 24-1/8 DEEP ENCLOSURES*												
		A	B	C	D	E	F	G	A	B	C	D	E	F	G	OPERATING ROD L	OPERATING ROD L	OPERATING ROD L	OPERATING ROD L	OPERATING ROD L	OPERATING ROD L									
TYPE RC - 30 AMP SWITCH	4 10 - 24	5 1/8	1 1/2	3 1/8	5 1/8	-	-	-	10 1/8	1 1/2	3 1/8	5 1/8	-	-	-	8 1/8	6 1/8	14 1/8	12 1/8	20 1/8	18 1/8									
TYPE TD - 60 AMP SWITCH	4 10 - 24	4 1/8	1 1/2	5 1/8	5 1/8	-	-	-	10 1/8	1 1/2	5 1/8	5 1/8	-	-	-	6 1/8	6 1/8	12 1/8	12 1/8	18 1/8	18 1/8									
TYPE TE - 100 AMP SWITCH	4 1/4 - 24	3 1/8	2	6 1/8	5 1/8	-	-	-	8 1/8	2	6 1/8	5 1/8	-	-	-	6 1/8	5 1/8	12 1/8	11 1/8	18 1/8	17 1/8									
TYPE TF SERIES B 200 AMP SWITCH	4 5/16 - 18	2 1/8	1 1/2	8	9 1/8	-	-	-	8 1/8	1 1/2	8	9 1/8	-	-	-	6 1/8	5 1/8	12 1/8	11 1/8	18 1/8	17 1/8									
TYPE RN - FAL - FAH BREAKERS	4 8 - 32	5 1/8	1 1/2	5 1/8	1 1/2	-	-	-	10 1/8	1 1/2	5 1/8	1 1/2	-	-	-	8 1/8	6 1/8	14 1/8	12 1/8	20 1/8	18 1/8									
TYPE RP - KAL - KAH BREAKERS	4 10 - 24	5 1/8	1 1/2	7 1/8	1 1/2	-	-	-	10 1/8	1 1/2	7 1/8	1 1/2	-	-	-	8 1/8	6 1/8	14 1/8	12 1/8	20 1/8	18 1/8									
TYPE RR - LAL - LAH BREAKERS	4 3/8 DIA.	DO NOT INSTALL												8 1/8	2 1/8	9 1/8	2	-	-	-	7 1/8	6 1/8	13 1/8	12 1/8	19 1/8	18 1/8				
	4 1/4 - 20	DO NOT INSTALL												-	-	-	-	-	-	-	-	-	-	-	-	-	-	-	-	-

*OPTIONAL EXTRA LONG OPERATING ROD, SQUARE "D" 9422-R2, IS REQUIRED IF PLATFORM IS NOT USED. (2 REQUIRED FOR TYPES RR, RT, TE, AND TF DISCONNECTS.) IF PLATFORM IS USED, USE "L" DIMENSIONS FOR 18-1/8 DEEP ENCLOSURES.

PARTS LIST

OPERATOR ADAPTER CAT. NO. WA-2ISDA FOR SQUARE D DISCONNECTS IN WIEGMANN ENCLOSURES

ITEM NO.	PART NAME	QTY.
1.	ADAPTER PLATE, SQUARE D	1
2.	GASKET, PLATE	1
3.	SCREW, 1/4-20 X 1/2 PAN HD	4
4.	SLIDE ARM	1
5.	SHOULDER COLLAR	1
6.	SCREW, 1/4-20 X 7/8 HEX HD	1
7.	LOCKWASHER, 1/4 SPRING	1
8.	WASHER, FLAT	2
9.	LOCKWASHER, 1/4 INT.	2
10.	NUT, 1/4-20 HEX	2
11.	DOOR CATCH	1
12.	SCREW, #10-32 X 3/8 PAN HD	2
13.	LOCKWASHER, #10 INT.	2
14.	ADAPTER PLATE CABLE	1



OPERATOR ADAPTER KIT WA2ISDA