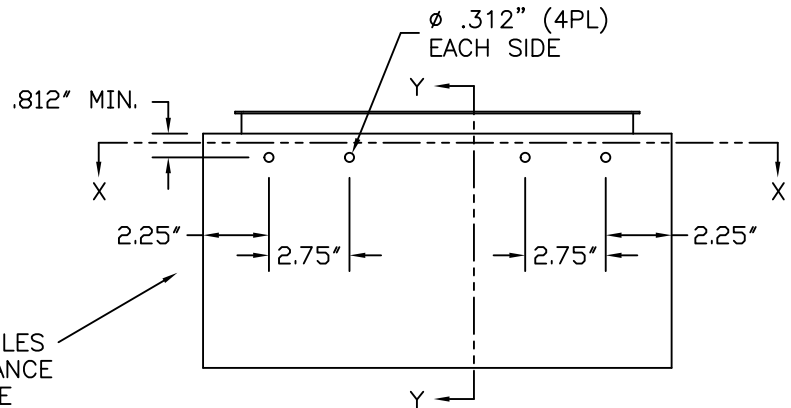
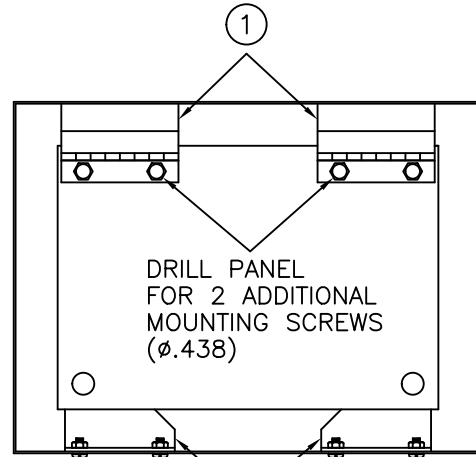


SECTION Y-Y



NOTE: DRILL HOLES THE SAME DISTANCE DOWN FROM THE TOP OF EACH SIDE.



SECTION X-X

	ITEM	QUANTITY
HINGE BRACKETS	1	2
LATCH BRACKETS	2	2
3/8" FLANGE NUTS	3	4
3/8-16 HEX BOLT	4	4
THUMB SCREW	5	2
RETAINING RING	6	2
SEALING WASHER	7	8
1/4-20 SCREW	8	8

INSTALLATION INSTRUCTIONS

FOR WANADFK DEAD FRONT
PANEL MOUNTING KIT

-NOTICE-
This drawing is the property of WIEGMANN a division of Hubbell incorporated (Delaware). It is loaned to you and must not be used in any way detrimental to the interests of WIEGMANN.

		WIEGMANN <i>FREEBURG, ILLINOIS, USA</i>	
PART NUMBER 33059		DESCRIPTION: DEAD FRONT KIT INSTALLATION INSTRUCTIONS	
TOLERANCES (EXCEPT AS NOTED)	DECIMAL ± .031"	DRAWN BY: JMG	REL PROD:
	FRACTIONAL ± 1/32"	CHK'D BY: HJL	REL DESIGN: 10/07/99
	ANGULAR ± 1/2'	APP'D BY: HJL	SCALE: NONE
		MATERIAL:	DWG. NO. HW00114
		PROJECT:	REV. -
			SHEET 1 OF 1