

LOUVER KIT AND FILTER KIT INSTALLATION INSTRUCTIONS

WAVK0203	-	3-1/4	3-1/4	2	2	2-1/2	2-1/2	-
WAVK0303	WAFLT33	3-7/8	4-1/2	2-5/8	3-1/4	3-1/8	3-3/4	-
WAVK0304	WAFLT34	4-3/4	4-1/2	3-1/2	3-1/4	4	3-3/4	-
WAVK0403	-	4-1/2	5-1/2	3-1/2	4-1/4	3-3/4	4-3/4	-
WAVK0404	WAFLT44	5-5/8	5-1/2	4-3/8	4-1/4	4-7/8	4-3/4	-
WAVK0604	WAFLT64	5-5/8	7-1/2	4-3/8	6-1/4	4-7/8	6-3/4	-
WAVK0606	WAFLT66	7-7/8	7-1/2	6-5/8	6-1/4	7-1/8	6-3/4	3-9/16
WAVK0806	WAFLT86	8-3/16	9-1/2	6-15/16	8-1/4	7-7/16	8-3/4	3-23/32
WAVK0808	WAFLT88	10-9/16	9-1/2	9-5/16	8-1/4	9-13/16	8-3/4	4-29/32
WAVK0812	WAFLT812	15-5/16	9-1/2	14-1/16	8-1/4	14-9/16	8-3/4	7-9/32
LOUVER CATALOG #	FILTER CATALOG #	A	B	L	M	P	R	S

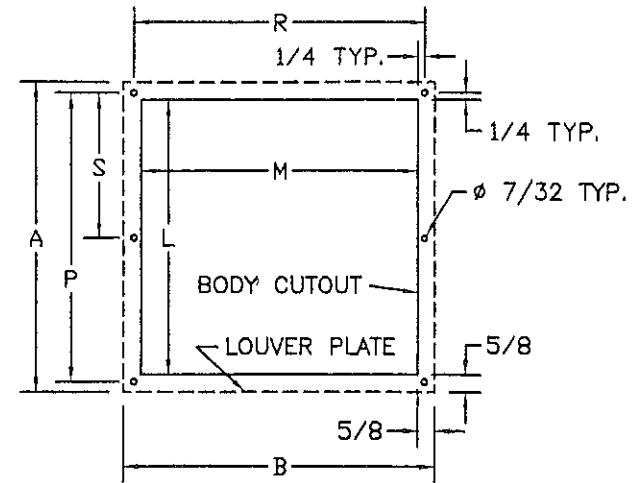


FIGURE 1.

NOTE: CENTER HOLES (DIMENSION "S") ARE NOT NEEDED ON ANY FILTER KITS. ONLY 6 X 6 AND LARGER LOUVER KITS REQUIRE CENTER HOLES.

INSTALLATION INSTRUCTIONS:

1. MAKE SURE THE PROPER LOUVER KIT AND/OR FILTER KIT HAS BEEN ORDERED.
2. LOCATE AND MARK HOLES AND CUTOUT AS SHOWN IN FIGURE 1.
3. DRILL HOLES USING A 7/32" DRILL BIT MAKING SURE THERE ARE NO ELECTRICAL WIRES OR INTERNAL COMPONENTS IN THE WAY.
4. ASSEMBLE LOUVER KITS AND/OR FILTER KITS AS SHOWN IN FIGURE 2.

NOTE: AFTER INSTALLATION IS COMPLETE, MAKE SURE LOUVER AND FILTER KITS DO NOT INTERFERE WITH ANY INTERNAL OR EXTERNAL EQUIPMENT.

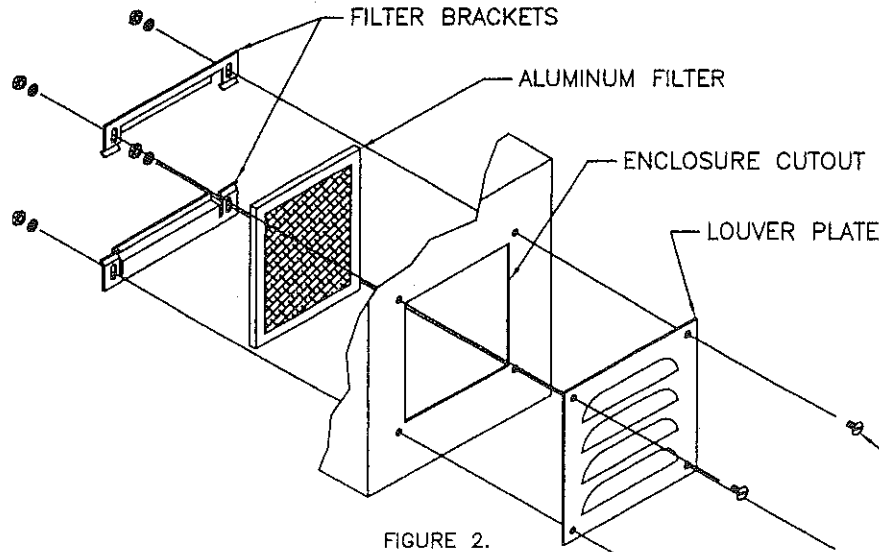


FIGURE 2.

10/32 TRUSS HEAD MACHINE SCREW WITH STAR WASHER AND NUT. (TYP. 4 OR 6)

-NOTICE-
This drawing is the property of WIEGMANN a division of Hubbell Incorporated (Delaware). It is loaned to you and must not be used in any way detrimental to the interests of WIEGMANN.

WIEGMANN FREEBURG, ILLINOIS, USA	
PART NUMBER 33072	DESCRIPTION: LOUVER AND FILTER KIT INSTRUCTIONS
TOLERANCES (EXCEPT AS NOTED)	DRAWN BY: JMG REL PROD:
DECIMAL ± .031"	CHK'D BY: HJL REL DESIGN: 05/15/88
FRACTIONAL ± 1/32"	APP'D BY: HJL SCALE: NONE
ANGULAR ± 1/2°	MATERIAL: DWG. NO. REV.
	PROJECT: SHEET 1 OF 1

REPLACES DWG. #MS880606ABX & #MS830210-VK