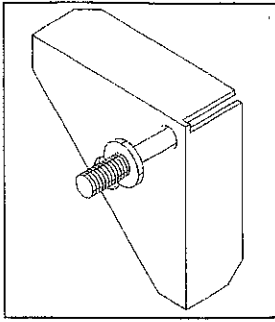


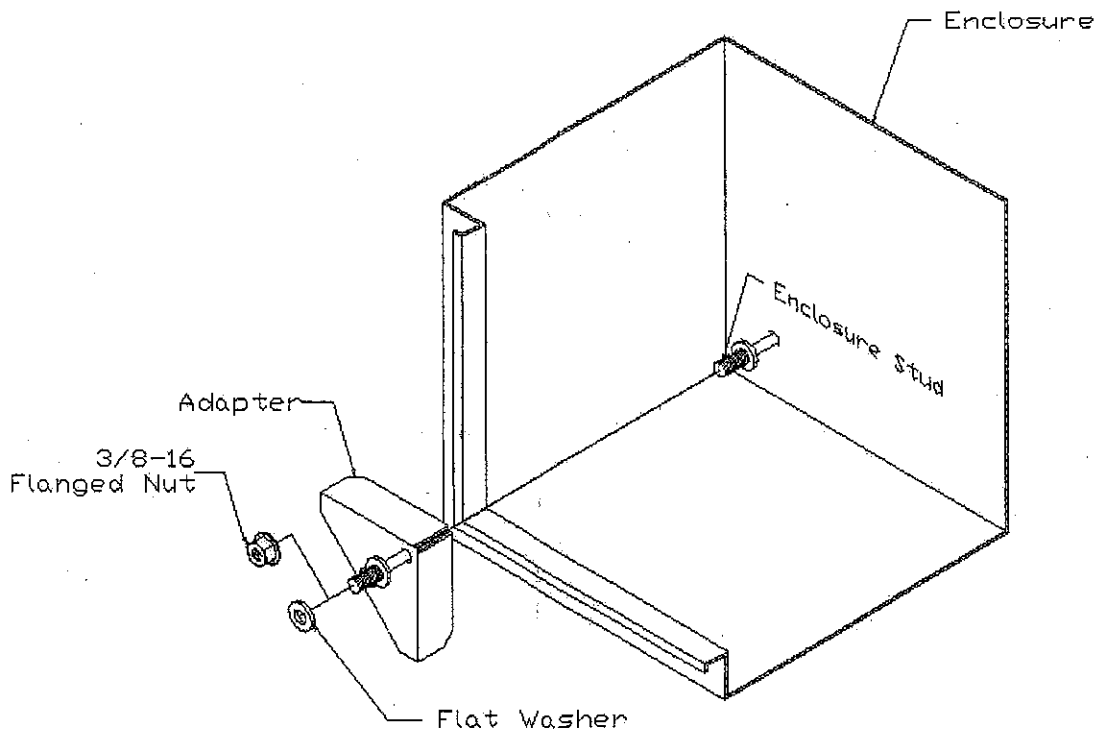


WIEGMANN
FREEBURG, ILLINOIS, USA

Panel Conversion Kit



1. Install adapter into corner of enclosure by placing adapter over enclosure stud as shown. Install 3/8-16 flanged nut and tighten.
2. Place flat washer over stud on adapter.
3. Install panel. (order separately)



P/N: HFW3307