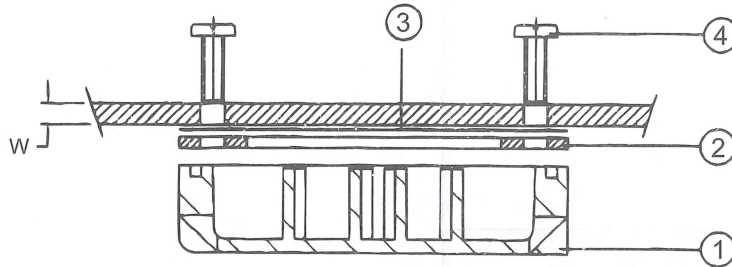


INSTRUCTION FOR ASSEMBLING DRAIN VENT

1. DRAIN VENT SHOULD BE FIXED AT THE BOTTOM OUTSIDE SURFACE OF THE ENCLOSURE
2. PASTE THE STICKER TEMPLATE ON THE ENCLOSURE BODY.
3. DRILL HOLES TO SIZE ON BODY AS PER STICKER TEMPLATE.
4. REMOVE THE STICKER TEMPLATE AFTER DRILLING.
5. ENCLOSURE SURFACE / ENCLOSURE BODY SHOULD BE FREE FROM BURR AND FIBRE PULL-OUTS.
6. SELECT SUITABLE SCREWS AS PER CHART.
7. ASSEMBLE WITH ENCLOSURE, DRAIN VENT WITH NITRILE GASKET AND SCREWS TIGHTEN SCREWS MAX. TO 0.8 lb-ft.



. SCREW SELECTION CHART

WALL THICK. "W"	M4 SCREW LENGTH "L"
1.6 UPTO 3.5	8 MM
4.0 UPTO 5.5	10 MM

PARTS OF KIT

04	M4x'L' CH.HD.SCREW	S.S	4+4
03	STICKER TEMPLATE	ADHESIVE	1
02	GASKET	NITRILE-RUBBER	1
01	DRAIN VENT COVER	SMC	1
S.No.	DESCRIPTION	MATERIAL	QTY



STAHLIN
ENCLOSURES
DIVISION OF ROBROY INDUSTRIES

BELDING , MICHIGAN
48809

PART NAME: DRAIN VENT ASSY

PART NO: DV4XKIT