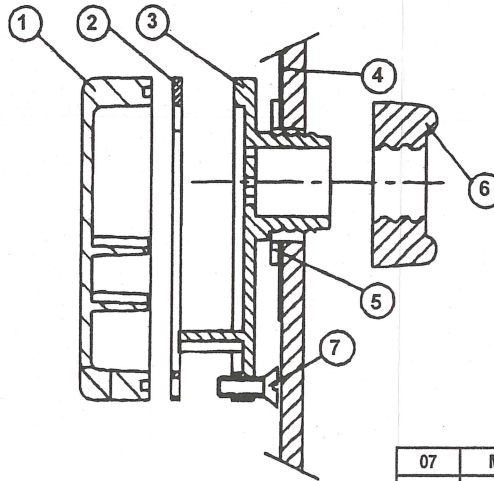


INSTRUCTION FOR ASSEMBLING AIR VENT

1. AIR VENT SHOULD BE FIXED AT THE TOP OUTER MOST SURFACE, LEFT OR RIGHT POSITION, ON ENCLOSURE.
2. PASTE THE STICKER TEMPLATE ON THE ENCLOSURE BODY.
3. ORIENTATION TAB IN STICKER TEMPLATE SHOULD BE FACING DOWNWARDS.
4. DRILL HOLES TO SIZE ON BODY AS PER STICKER TEMPLATE.
5. REMOVE THE STICKER TEMPLATE AFTER DRILLING.
6. ENCLOSURE SURFACE / ENCLOSURE BODY SHOULD BE FREE FROM BURR AND FIBRE PULL-OUTS.
7. AIR VENT WITH RECTANGULAR NITRILE GASKET, ADAPTOR AND M4x10 SCREWS ARE FACTORY ASSEMBLED WITH 0.8 lb-ft.
8. FIX ASSEMBLED AIR VENT WITH ENCLOSURE BY MEANS OF ROUND NITRILE GASKET AND NUT. TORQUE ON NUT TO BE APPLIED MAX. TO 1 lb-ft.



PARTS OF KIT

07	M4x10 CSK.HD.SCREW	S.S	4
06	NUT	SMC	1
05	ROUND GASKET	NITRILE-RUBBER	1
04	STICKER TEMPLATE	ADHESIVE	1
03	ADAPTER	SMC	1
02	RECTANGULAR GASKET	NITRILE-RUBBER	1
01	AIR VENT COVER	SMC	1
S.No.	DESCRIPTION	MATERIAL	QTY



STAHLIN
ENCLOSURES
DIVISION OF ROBOVY INDUSTRIES

BELDING, MICHIGAN
48809

PART NAME: AIR VENT ASSY

PART NO: BV4XKIT