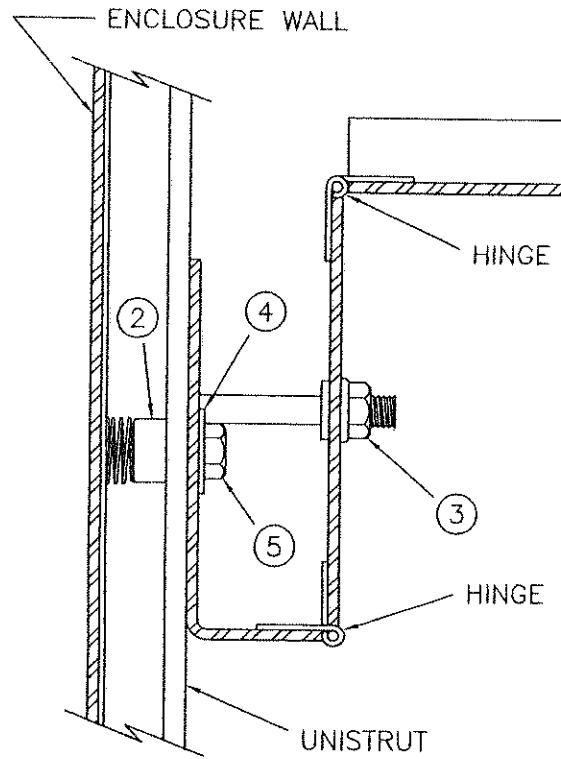


33065

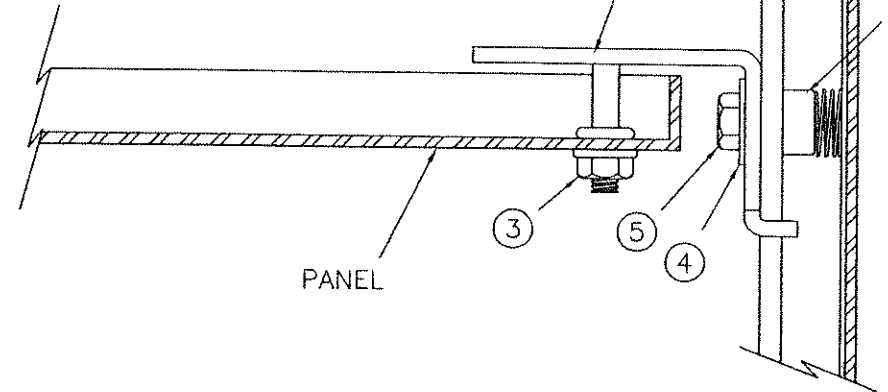
INSTALLATION INSTRUCTIONS

FOR WC14 SERIES CONSOLE
HALF SWING PANELS

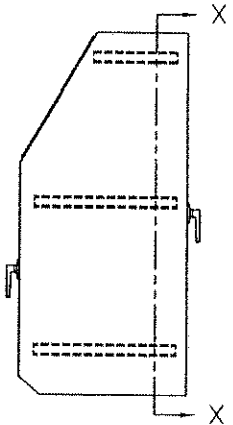
E
D
C
B
A



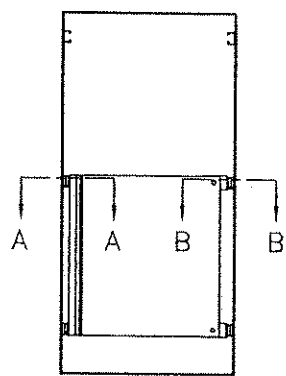
SECTION A-A



SECTION B-B




CONSOLE SIDE VIEW



SECTION X-X

ITEM	WC14SPH	
	1	2
BRACKETS	1	2
CLAMPING NUTS	2	4
3/8" FLANGE NUTS	3	4
3/8" FLAT WASHER	4	4
1" HEX BOLT	5	4

-NOTICE-
This drawing is the property of WIEGMANN a division of Hubbell incorporated (Delaware). It is loaned to you and must not be used in any way detrimental to the interests of WIEGMANN.

		WIEGMANN FREEBURG, ILLINOIS, USA	
PART NUMBER 33065		DESCRIPTION: SWING PANEL INSTALLATION INSTRUCTIONS	
TOLERANCES (EXCEPT AS NOTED)		DRAWN BY: JMG	REL PROD:
DECIMAL ± .031"		CHK'D BY: HJL	REL DESIGN: 08/24/99
FRACTIONAL ± 1/32"		APP'D BY: HJL	SCALE: NONE
ANGULAR ± 1/2'		MATERIAL:	DWG. NO. HW00112
		PROJECT:	REV. -
			SHEET 1 OF 1

E
D
C
B
A

1 2 3 4 5 6