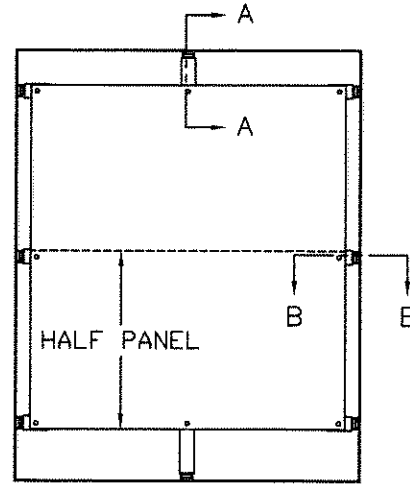
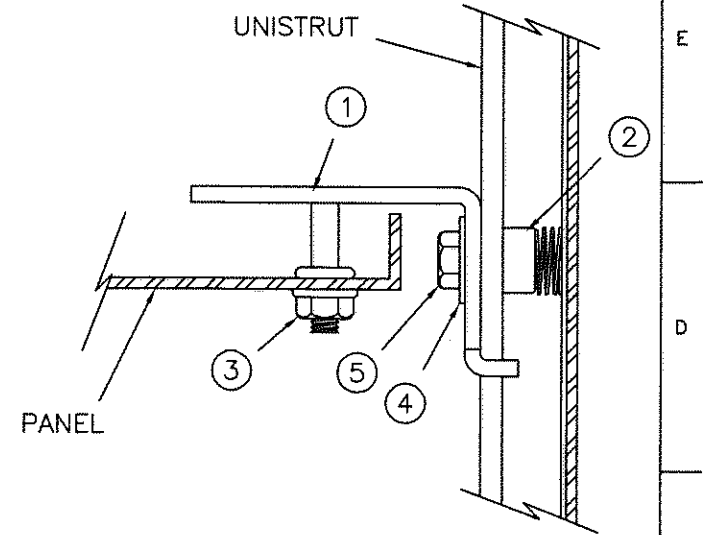


SECTION A-A



FRONT SECTION VIEW




SECTION B-B

ITEM	WADDF260H	WADDF272H	WADDF290H	WADDF160H	WADDF172H	WADDF190H
BRACKETS	1	4	4	4	6	6
CLAMPING NUTS	2	8	8	8	10	10
3/8" FLANGE NUTS	3	8	8	8	10	10
3/8" FLAT WASHER	4	12	12	12	14	14
1" HEX BOLT	5	10	10	10	12	12
1-1/2" HEX BOLT	6	2	2	2	2	2
ANGLES	7	2	2	2	2	2
57-3/4" CHANNEL	8	1	0	0	1	0
69-5/8" CHANNEL	9	0	1	0	0	1
87-5/8" CHANNEL	10	0	0	1	0	0

INSTALLATION INSTRUCTIONS

FOR FREE STANDING DOUBLE DOOR
FULL AND HALF PANELS

—NOTICE—
This drawing is the property of WIEGMANN a division of Hubbell incorporated (Delaware). It is loaned to you and must not be used in any way detrimental to the interests of WIEGMANN.

		WIEGMANN FREEBURG, ILLINOIS, USA	
PART NUMBER 33053	DESCRIPTION: PANEL INSTALLATION INSTRUCTIONS		
TOLERANCES (EXCEPT AS NOTED)	DRAWN BY: JMG	REL PROD:	
DECIMAL ± .031"	CHK'D BY: HJL	REL DESIGN: 05/28/99	
FRACTIONAL ± 1/32"	APP'D BY: HJL	SCALE: NONE	
ANGULAR ± 1/2"	MATERIAL:	DWG. NO. HW00106	REV. —
	PROJECT:	SHEET 1 OF 1	