

RES70 Chassis Mounted Filter

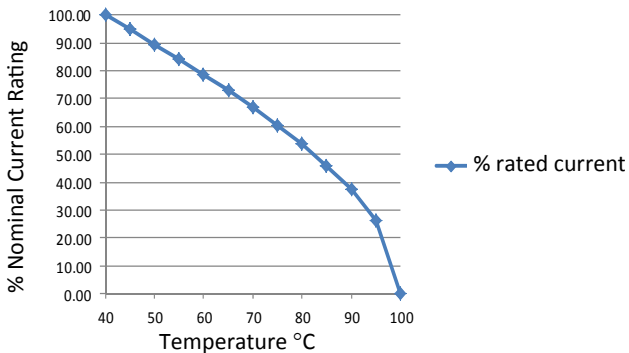
Multi-Stage, High Differential, High Common Mode and High Frequency

Roxburgh's RES70 series is a multi-stage EMC filter offering high differential mode, high common mode and high frequency attenuation.

Designed for quick and easy chassis mounting, these general purpose filters are suitable for a broad range of applications including noisy environments where increased filter performance is required.



**Temperature Derating Curve for EMC Filters
Rated at 40°C Ambient and 100°C Maximum**



Call us on:
Tel: +44 (0) 1724 273200

Features:

- Multi-stage
- High differential and high common mode attenuation
- High frequency attenuation
- UL approved E191581
- For use from DC to 400Hz
- 1 Amp to 36 Amp

Benefits:

- Compact size for rated current
- Fast-on, screw or wire terminations
- Quick and Easy Mounting
- Available from UK Stock

Application Examples:

- Lighting
- Drives
- Electrical and electronic equipment
- Consumer goods
- Household equipment
- Building automation
- Machinery
- Electronic data/communication processing equipment
- Office automation

Full technical specification on page 2

Performance Curves on page 3

Other options in this range on page 4

DEM Manufacturing
Deltron Emcon House
Hargreaves Way
Sawcliffe Industrial Park
Scunthorpe, North Lincolnshire.
DN15 8RF



Tel: 44 (0) 1724 273200
Fax: 44 (0) 1724 280353
Email: sales@dem-uk.com
Web: www.dem-uk.com/roxburgh

RES70F16**Rev. 0****CHARACTERISTICS:**

Rated Voltage:	250VAC max
Rated Current at Ambient:	16A @ 40°C
Operating Frequency:	DC-400HZ
Climatic Class (IEC60068-1):	25/100/21
Temperature Range:	-25°C to +100°C
Over load Current:	1.5 x Rated Ct. for 1 Min
Operational Leakage current : (at 230VAC/50Hz and Total C +/-20%)	0.734 mA max
Worst case Leakage current : (N interrupted and Total C +/-20%)	<1.101 mA max
DCR @ 25°C (+/-25%) :	100 mΩ
Test Voltage (100%) for 2 sec:-	
L-N:	1100VDC
L-GND:	3000VDC
Ingress Protection:	IP 20
Weight (Approximate):	600 gr

FILTER PARAMETERS:

Total Inductance (L-L'+N-N') @10KHz:	5.6mH +50%,-30%
Total Capacitance (L-L/L-N) @1KHz:	2μF +/- -20%
Total Capacitance (L/N-GND) @1KHz:	9.4nF +/- -20%
Total Resistance (L-L/L-N):	0.22MΩ +/- -10%
Total Resistance (L/N-GND):	

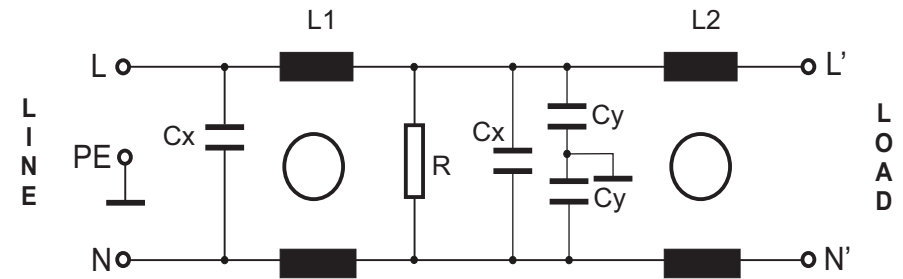
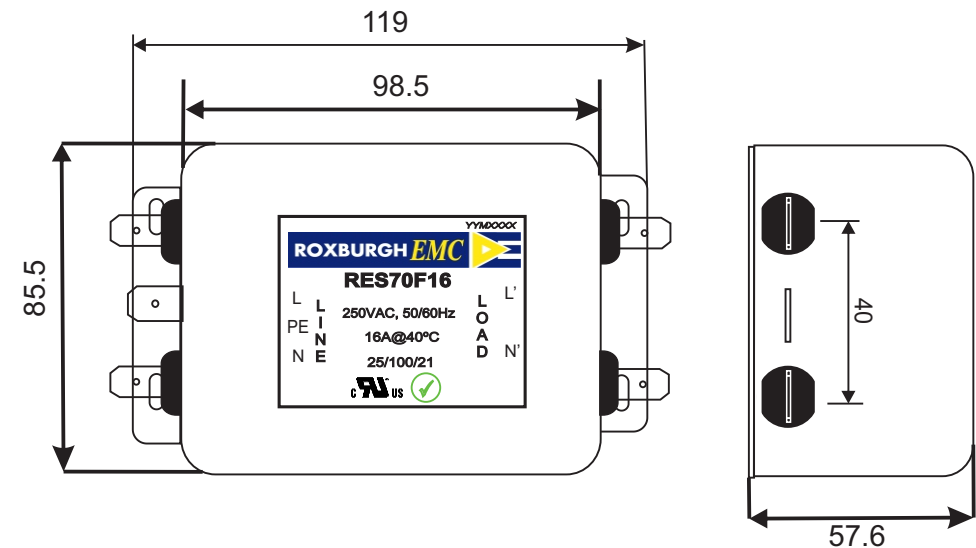
APPROVALS:

REACH
RoHS
UL



APPROVED
BY
AJAY

Date: 28-03-2014

CIRCUIT DIAGRAM:**MECHANICAL DIMENSION (mm):****Note:**

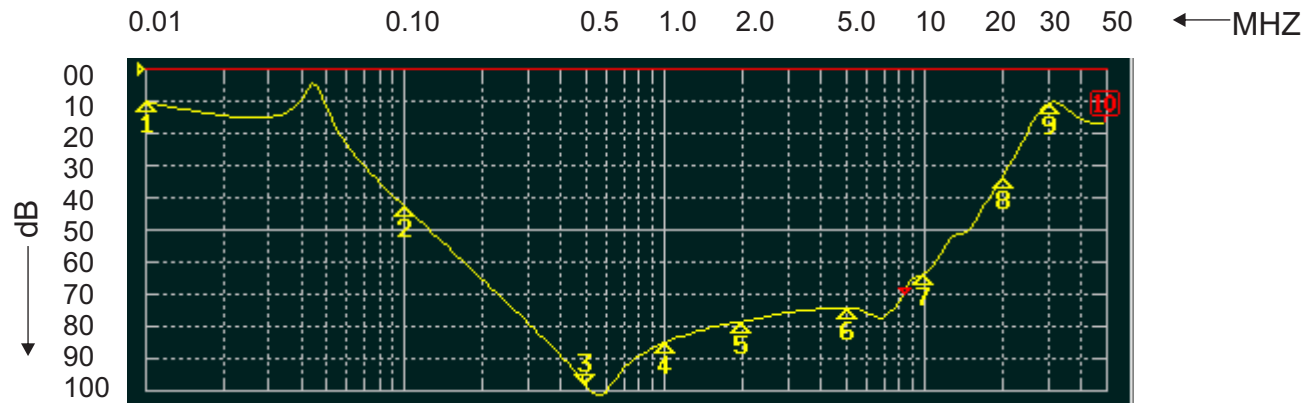
Housing matl. Fe with Ni Plated
Fast-On Terminal (6.3 x 0.8mm)
Connections

TOLERANCE: +/-1.0 mm

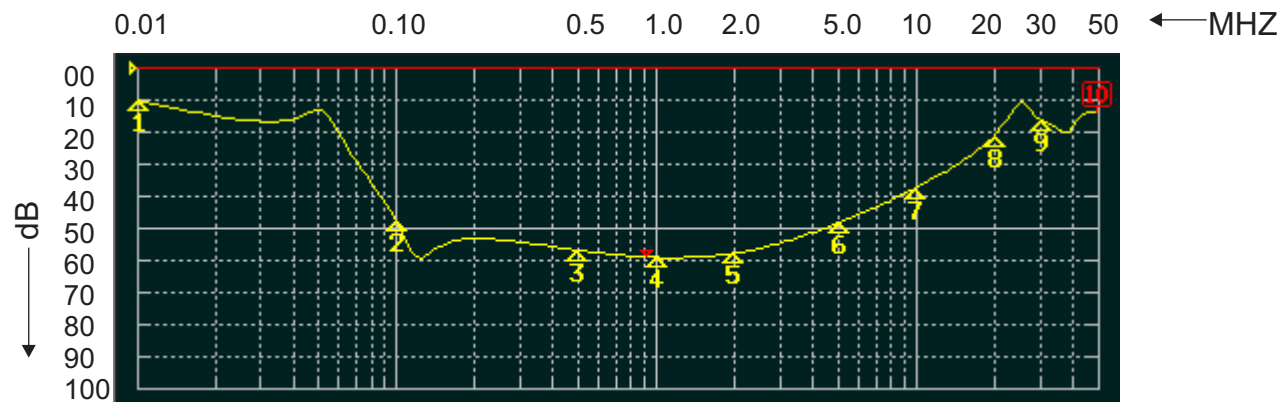


ROXBURGH EMC
FILTER INSERTION LOSS CHARACTERISTICS
CISPR 17 - 50 OHM METHOD

RES70F16



COMMON MODE



DIFFERENTIAL MODE



RES70 Chassis Mounted Filter

Multi-Stage, High Differential, High Common Mode and High Frequency

Options Available:

Part Number	Rated Current	Leakage Current @	Inductance	Capacitance	Capacitance	Resistance	Connection Type		
	@40°C	230V/50Hz	ΣL	ΣCx	ΣCy	ΣR			
	A	mA	mH	uF	nF	K Ω			
RES70F01	1	0.73	44	0.66	9.4	1000	F	W	
RES70F03	3	0.73	19.6	0.94	9.4	470	F	W	
RES70F06	6	0.73	15.6	2	9.4	220	F	W	
RES70F10	10	0.73	9	2	9.4	220	F	W	
RES70F12	12	0.73	6.5	2	9.4	220	F	W	
RES70F16	16	0.73	3.6	2	9.4	220	F	W	S
RES70S25	25	0.73	4	4.4	9.4	220			S
RES70S36	36	0.86	2.46	4.4	9.4	220			S



Call us on:
Tel: +44 (0) 1724 273200

DEM Manufacturing
Deltron Emcon House
Hargreaves Way
Sawcliffe Industrial Park
Scunthorpe, North Lincolnshire.
DN15 8RF



Tel: 44 (0) 1724 273200
Fax: 44 (0) 1724 280353
Email: sales@dem-uk.com
Web: www.dem-uk.com/roxburgh