

# Electronic Remote Reset Module Product Installation

Figure 1.

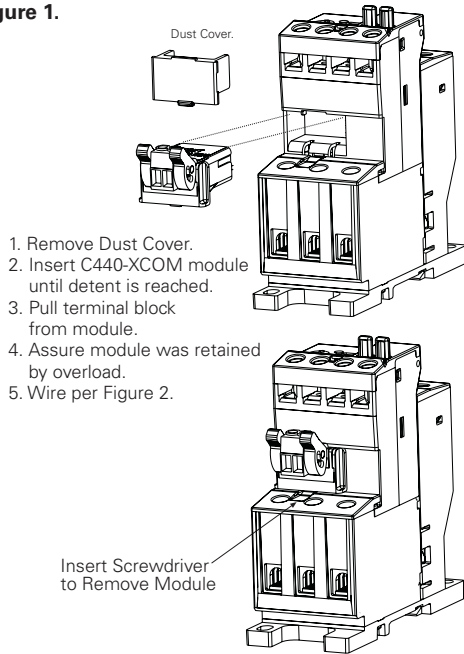


Figure 2.

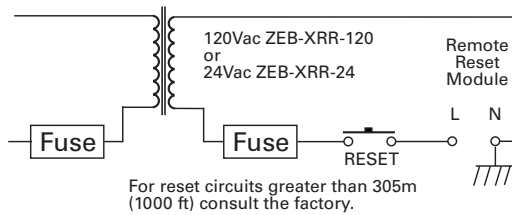


Figure 3.

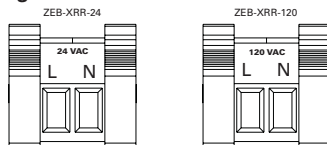


Table 1. Modbus Settings

Pin #	Description	
	ZEB-XRR-24	ZEB-XRR-120
1	L	L
2	N	N

Table 2. Environmental Ratings of the Module

Transportation and Storage	Temperature	-40°C to 85°C (-40°F to 185°F)
	Humidity	5-95% non-condensing
	Shock IEC 60068-2-27	15G
Operating	Temperature	-25°C to 65°C (-13°F to 149°F)
	Humidity	5-95% non-condensing
	Altitude	Above 2000 meters (6600 feet) Consult FACTORY
	Vibration IEC-60068-2-6	3G
	Polution Degree	3

Table 3. Approvals/Certifications

Agency Certifications	UL508 CUL (CSA C22.2 No. 14) CE (Low Voltage Directive)	 <b>RoHS</b>
-----------------------	---	--

Table 4. Module Electrical Requirements

	24V ac	120V ac
Voltage Range	19.2 -28.8	96 - 148
Transformer	50VA for 1 second	

**Notes:**

Use any UL Listed Control Transformer 50VA or Greater.

**Eaton Corporation**  
Electrical Sector  
1111 Superior Ave.  
Cleveland, OH 44114  
United States  
877-ETN-CARE (877-386-2273)  
Eaton.com

© 2010 Eaton Corporation  
All Rights Reserved  
Publication No. IL04210004E  
July 2010, Rev 002



PowerChain Management®

PowerChain Management is a registered trademark of Eaton Corporation.

All other trademarks are property of their respective owners.