

NON-GLARE SCREEN COVER INSTALLATION INSTRUCTIONS

P/N EA-XX-COV2, XX = 6, 7, 8, 10, 12 OR 15

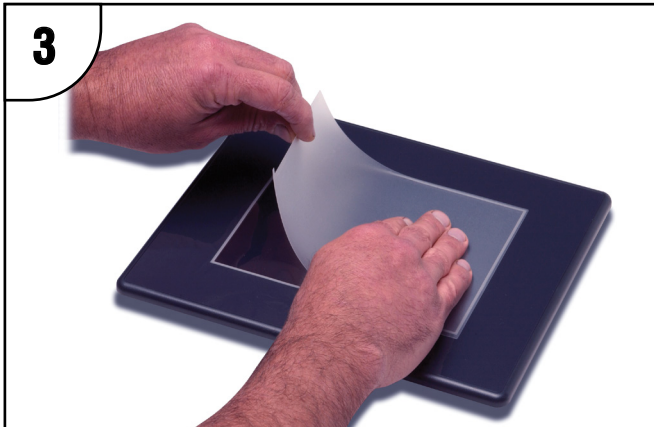
Preparation: Remove any accumulated dust, grease and dirt from the touch panel front surface using a damp cloth with a mild soap solution. Wipe the front surface dry with a soft lint-free cloth.



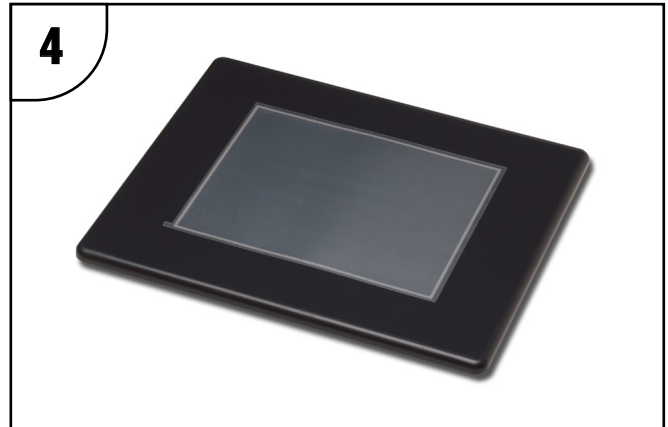
Check to be sure that the proper size non-glare screen cover is being used on the subject touch panel. Notice that the outer perimeter of the screen cover has an adhesive band. The adhesive band will be located on the outside edge of the touch panel's white frame bordering the touch area when installed.



Start in one corner and peel the screen cover from the backing.



Align the screen cover over the touch panel's white frame, then start on one side and gently lay the cover over the entire touch area.



Smooth out the screen cover and press all around the outside perimeter to secure the cover in place. The screen cover can be removed by lifting up on the small tab and gently pulling the cover away from the touch panel's surface.

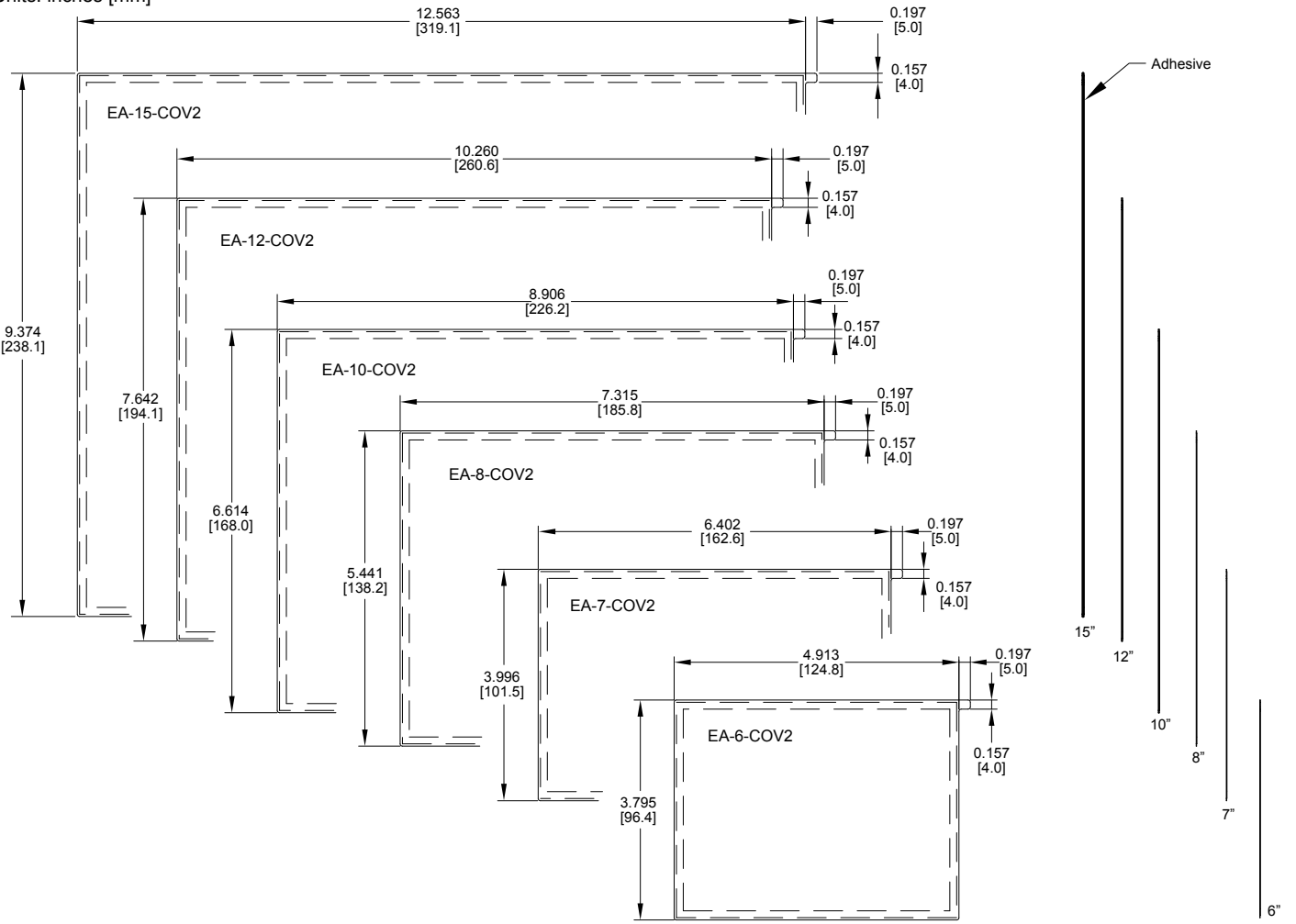


IMPORTANT:

The protective cover ships with a thin protective sheet on the face of the cover that needs to be carefully removed. If your panel is not clear, the protective sheet may not have been removed.

Screen Cover Dimensions

Units: inches [mm]



1-800-633-0405

www.automationdirect.com/c-more