

# BEZEL REPLACEMENT INSTRUCTIONS

## P/N EA-15-BEZEL



**WARNING:** This procedure should only be performed by qualified personnel who are experienced in working with electronic equipment. Take the necessary steps to prevent damage from static electricity discharge. Disconnect input power to the touch panel before proceeding. Be careful not to pinch the ribbon cable between the housing and bezel when re-assembling the panel.

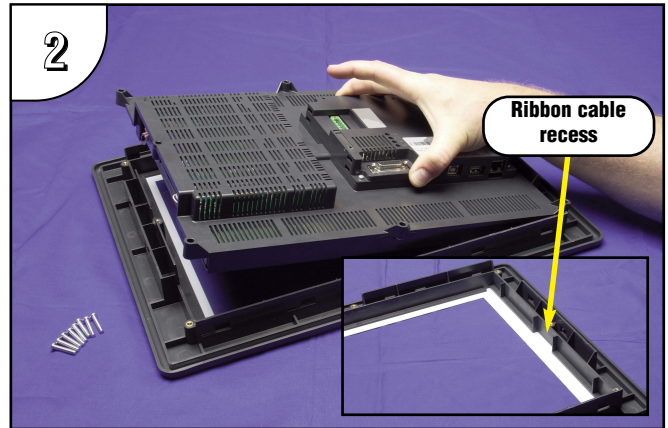


**NOTE:** EA-15-BEZEL IS COMPATIBLE WITH EA7 SERIES TOUCH PANELS ONLY. EA-15-BEZEL WILL NOT FIT EA9 SERIES PANELS

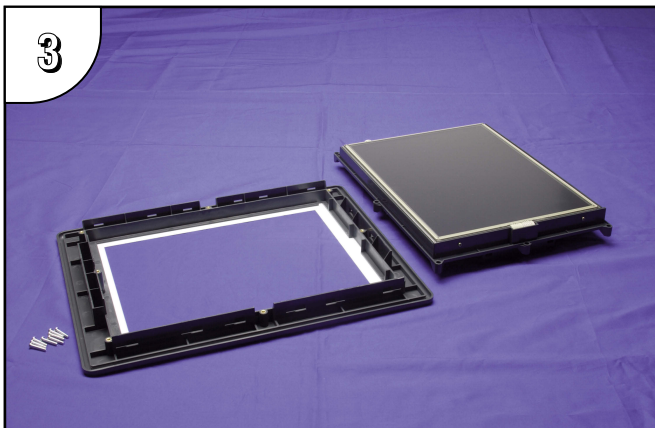
**Preparation:** Disconnect input power and all other connections, then remove the touch panel from the control cabinet. In a clean environment, place the panel face down on a lint-free soft surface to prevent scratching the front of the panel.



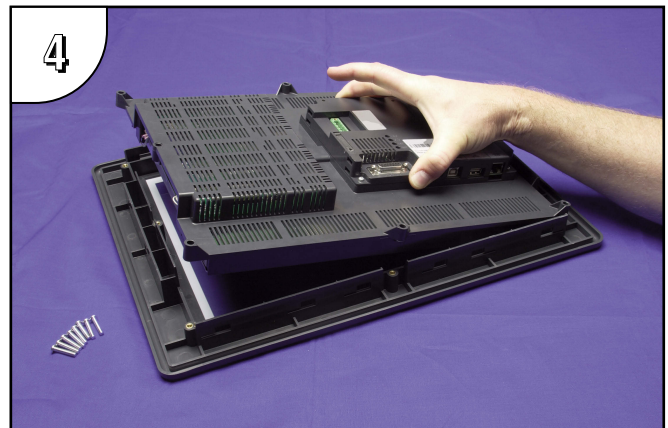
**1** With power disconnected, use a #2 Phillips screwdriver to remove the eight outer screws holding the touch panel's main electronics housing to the front bezel.



**2** Lift the touch panel's main electronics housing from the front bezel. Set the four screws to the side and discard the original bezel. Observe the ribbon cable recess on the front bezel (see detail) for use in re-assembling the panel.



**3** Place the new bezel facing down on the lint-free soft surface along with main electronics and eight screws.



**4** Position the touch panel's main electronics housing into the new bezel so that the flat ribbon cable on the housing matches up with the recess in the front bezel. Insert the eight screws and tighten to a maximum of 70 oz-in [0.5 Nm].

1-800-633-0405

www.automationdirect.com/c-more