

# BACKLIGHT BULB REPLACEMENT INSTRUCTIONS

## P/N EA-12-BULB\* OR EA-12-BULB\*\*



**WARNING:** This procedure should only be performed by qualified personnel who are experienced in working with electronic equipment. Take the necessary steps to prevent damage from static electricity discharge. Disconnect input power to the touch panel before proceeding. Be careful not to pinch the ribbon cable between the housing and bezel when re-assembling the panel.

\*EA-12-BULB - For panel serial number EA7-T12C+10Z29B019 and older.

\*\*EA-12-BULB2 - For panel serial number EA7-T12C+10Z29B020 and newer.

Serial Number = [Part Number]+[YYMDDFNNN]

Date Code = **YYMF**

YY: Year (05-99 --- e.g. 05 = 2005)

M: Month (1-9, X, Y, Z --- e.g. X = Oct.)

DD: Day (1-31)

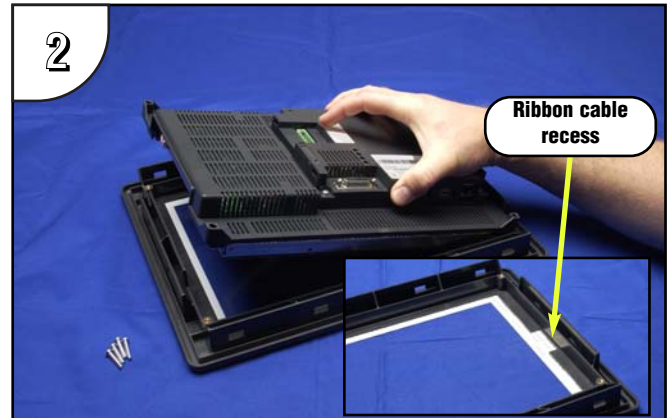
F: Manufacturing Site (0-9, A-Z)

NNN: Sequence number for the date listed (000-999)

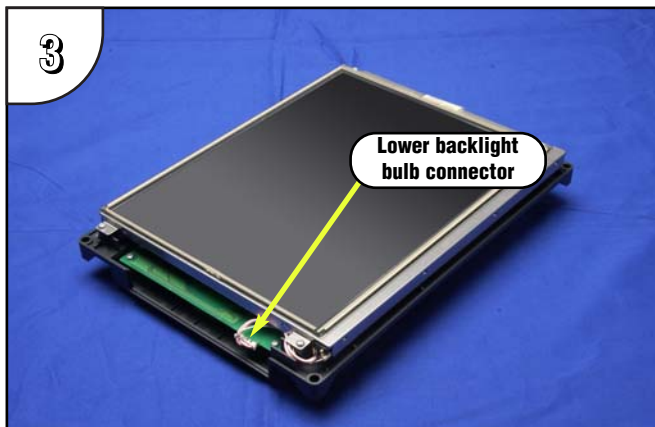
**Preparation:** Disconnect input power and all other connections, then remove the touch panel from the control cabinet. In a clean environment, place the panel face down on a lint-free soft surface to prevent scratching the front of the panel.



With power disconnected, use a #2 Phillips screwdriver to remove the four outer screws holding the touch panel's main electronics housing to the front bezel.



Lift the touch panel's main electronics housing from the front bezel. Set the front bezel and four screws to the side. Observe the ribbon cable recess on the front bezel (see detail) for use in re-assembling the panel.



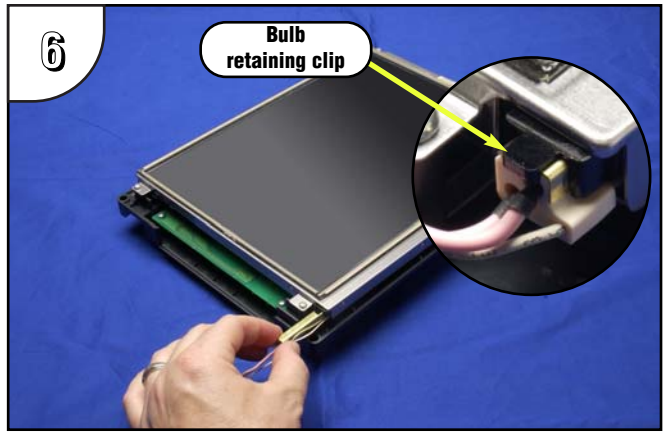
Place the touch panel's main electronics housing facing up on a lint-free soft surface. Position the housing so that the backlight bulb connector is in plain view. (There is only one bulb used on the 12" touch panel.)



Carefully lift the bulb's wires out of the wire guides so they are free from obstructions.



**5**  
Unplug the backlight bulb's power cable connector from the circuit board connector.



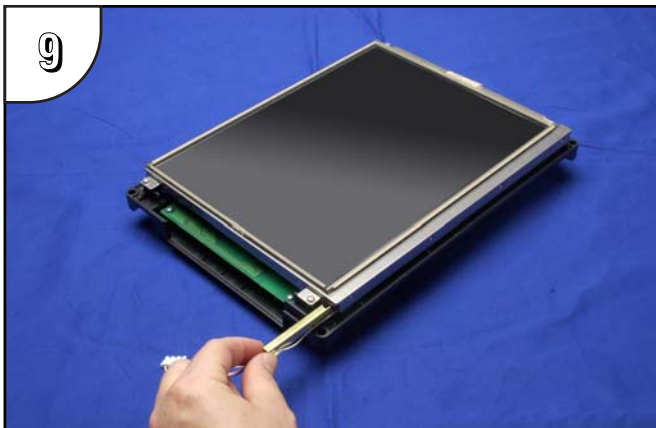
**6**  
Push up on the bulb retaining clip (see detail) while grasping the plastic end of the bulb assembly and gently slide the bulb from its guide. The bulb is glass and fragile, so handle with care.



**7**  
This photo shows the backlight bulb completely removed from its guide in the panel's main electronics housing.



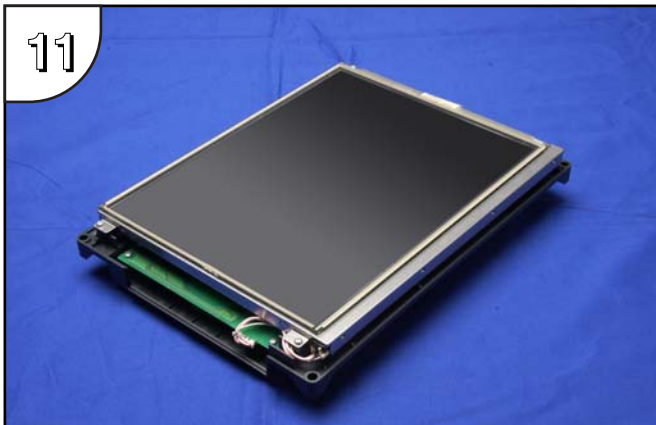
**8**  
Remove the replacement bulb from its shipping tube and the protective bubble wrap.



**9**  
Position the replacement bulb so that the opening in its three-sided gold colored reflector faces toward the LCD touch screen. Using gentle pressure, slide the bulb into the guide until the retaining clip locks.



**10**  
Plug the backlight bulb's power cable connector back into its circuit board connector.



**11**  
Gently position the backlight bulb's wires back into the wire guides. Position any excess wire length in between the printed circuit board and the LCD to prevent it from becoming pinched between the housing and bezel.



**12**  
Position the touch panel's main electronics housing into the front bezel so that the flat ribbon cable on the housing aligns with the recess in the front bezel. Insert the four screws and tighten to a maximum of 70 oz-in [0.5 Nm].