

REPLACEMENT PARTS



In this Chapter...

Replacement Parts Overview	9-2
Replacement Parts.....	9-2
Panel Mounting Clips – EA-MG-S3ML-BRK	9-2
Panel Gasket – EA-MG-S3ML-GSK	9-2
8-Button Keypad Bezel Mounting Clips – EA-MG-BZ1-BRK.....	9-2
8-Button Keypad Bezel Gasket – EA-MG-BZ1-GSK.....	9-2
20-Button Keypad Bezel Mounting Clips – EA-MG-BZ2-BRK.....	9-3
20-Button Keypad Bezel Gasket – EA-MG-BZ2-GSK.....	9-3
DC Power Connector – EA-MG-DC-CON	9-3
Function Keys Label Inserts – EA-MG-S3ML-FKL	9-3
Customizing the Function Keys Insert Label	9-4

Replacement Parts Overview

Part Number	Description
EA-MG-S3ML-BRK	Replacement mounting clip for <i>C-more</i> 3" Micro-Graphic panels (pk of 2)
EA-MG-BZ1-BRK	Replacement mounting clip for <i>C-more</i> 3" Micro-Graphic keypad bezel EA-MG-BZ1 (pk of 2)
EA-MG-BZ2-BRK	Replacement mounting clip for <i>C-more</i> 3" Micro-Graphic keypad bezel EA-MG-BZ2 (pk of 8)
EA-MG-DC-CON	Replacement adapter DC power connector for optional EA-MG-P1 and EA-MG-SP1 power adapters used with <i>C-more</i> 3" Micro-Graphic panels (pk of 5)

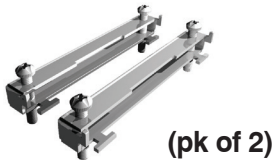
Part Number	Description
EA-MG-S3ML-GSK	Replacement mounting gasket for <i>C-more</i> 3" Micro-Graphic panels
EA-MG-BZ1-GSK	Replacement mounting gasket for <i>C-more</i> 3" Micro-Graphic keypad bezel EA-MG-BZ1
EA-MG-BZ2-GSK	Replacement mounting gasket for <i>C-more</i> 3" Micro-Graphic keypad bezel EA-MG-BZ2
EA-MG-S3ML-FKL	Replacement function key label insert for <i>C-more</i> 3" Micro-Graphic panels (pk of 10; 5 blank, 5 F1-F5)

Replacement Parts

9

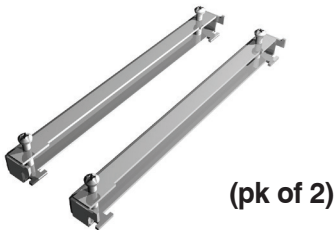
Panel Mounting Clips

Part No. EA-MG-S3ML-BRK



8-Button Keypad Bezel Mounting Clips

Part No. EA-MG-BZ1-BRK



Panel Gasket

Part No. EA-MG-S3ML-GSK



8-Button Keypad Bezel Gasket

Part No. EA-MG-BZ1-GSK

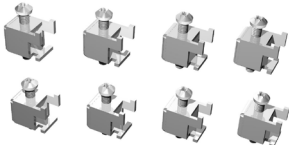


Replacement Parts (con'd)

20-Button Keypad Bezel

Mounting Clips

Part No. EA-MG-BZ2-BRK



(pk of 8)

20-Button Keypad Bezel

Gasket

Part No. EA-MG-BZ2-GSK



DC Power Connector

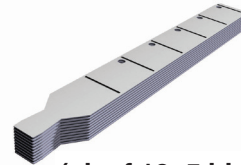
Part No. EA-MG-DC-CON



(pk of 5)

Function Keys Label Inserts

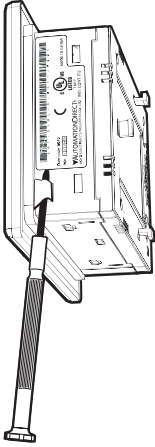
Part No. EA-MG-S3ML-FKL



(pk of 10; 5 blank, 5 F1-F5)

Customizing the Function Keys Insert Label

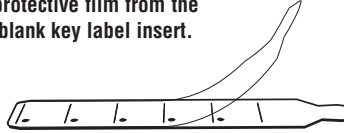
Step 1 - Remove existing function key label insert using a small tool such as jeweler's screw driver.



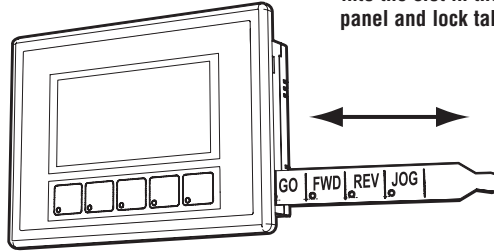
Step 3 - If desired, print and apply self adhesive labels to the blank insert.



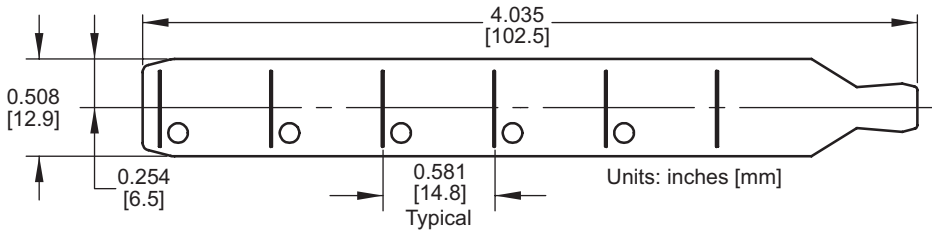
Step 2 - Remove the protective film from the blank key label insert.



Step 4 - Install the new insert into the slot in the side of the panel and lock tab into place.



Label Printer Example: Brother P-touch model TZ-131, using TZ black print on clear tape, p/n TZ-131, font size 24 narrow, 10 spaces between each word.



NOTE: Insert shown full size.