

⚠ DANGER / DANGER / PELIGRO

HAZARDOUS VOLTAGE

- This equipment must be installed and serviced only by qualified electrical personnel.
- Turn off all power supplying this equipment before working on or inside equipment.
- Always use a properly rated voltage sensing device to confirm power is off.
- Replace all devices, doors, and covers before turning on power to this equipment.

Failure to follow these instructions will result in death or serious injury.

TENSION DANGEREUSE

- L'installation et l'entretien de cet appareil ne doivent être effectués que par du personnel qualifié.
- Coupez l'alimentation de cet appareil avant d'y travailler.
- Utilisez toujours un dispositif de détection de tension à valeur nominale approprié pour confirmer que toute alimentation est coupée.
- Remplacez tous les dispositifs, les portes et les couvercles avant de mettre cet appareil sous tension.

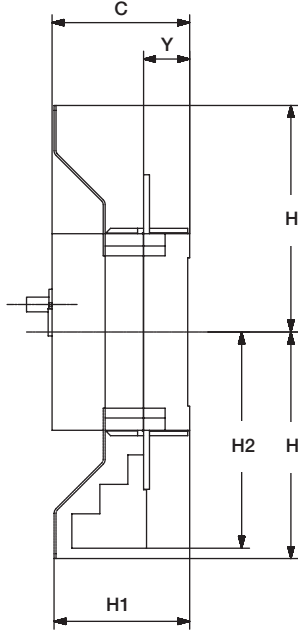
Si ces précautions ne sont pas respectées, cela entraînera la mort ou des blessures graves

TENSION PELIGROSA

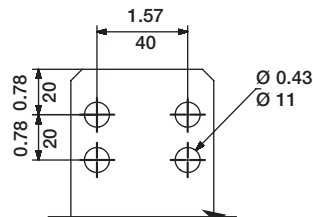
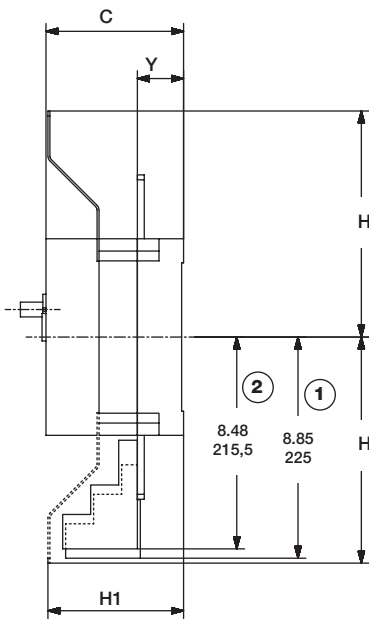
- Solamente el personal de mantenimiento eléctrico especializado deberá instalar y prestar servicios de mantenimiento a este equipo.
- Desenergice el equipo antes de realizar cualquier trabajo en él.
- Siempre utilice un dispositivo detector de tensión adecuado para confirmar la desenergización del equipo.
- Vuelva a colocar todos los dispositivos, las puertas y las cubiertas antes de energizar este equipo.

El incumplimiento de estas precauciones podrá causar la muerte o lesiones serias.

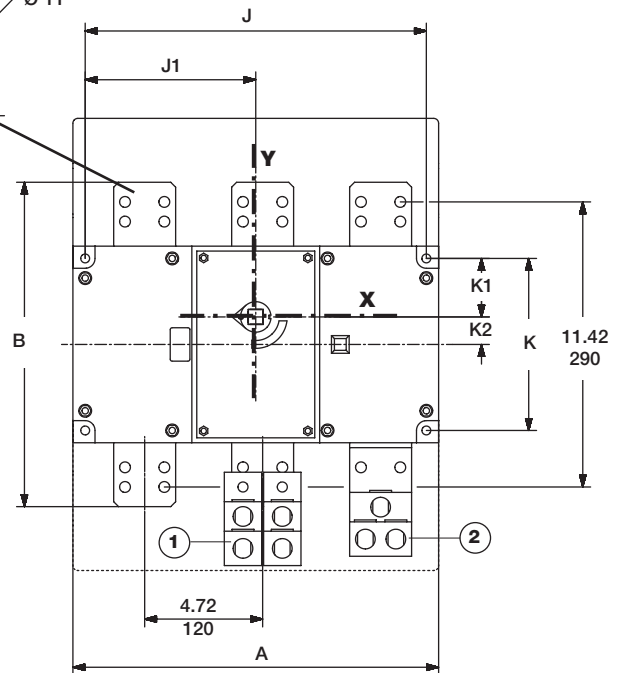
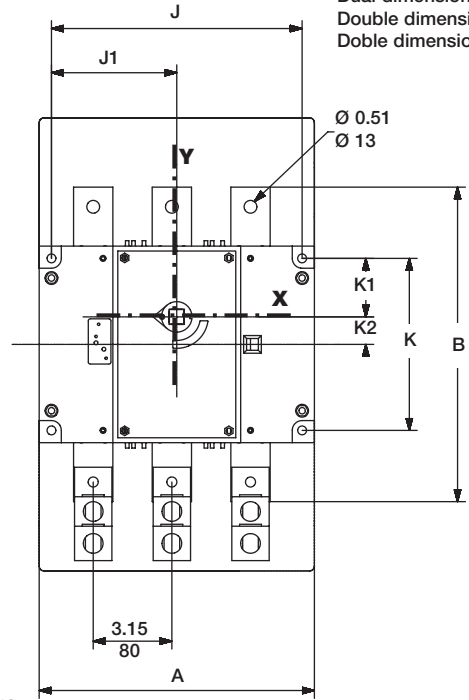
- ① 27003040
- ② 27004040
- ③ 27003060
- ④ 27004060



- ⑤ 27003080
- ⑥ 27004080
- ⑦ 27003100
- ⑧ 27004100
- ⑨ 27003120
- ⑩ 27004120

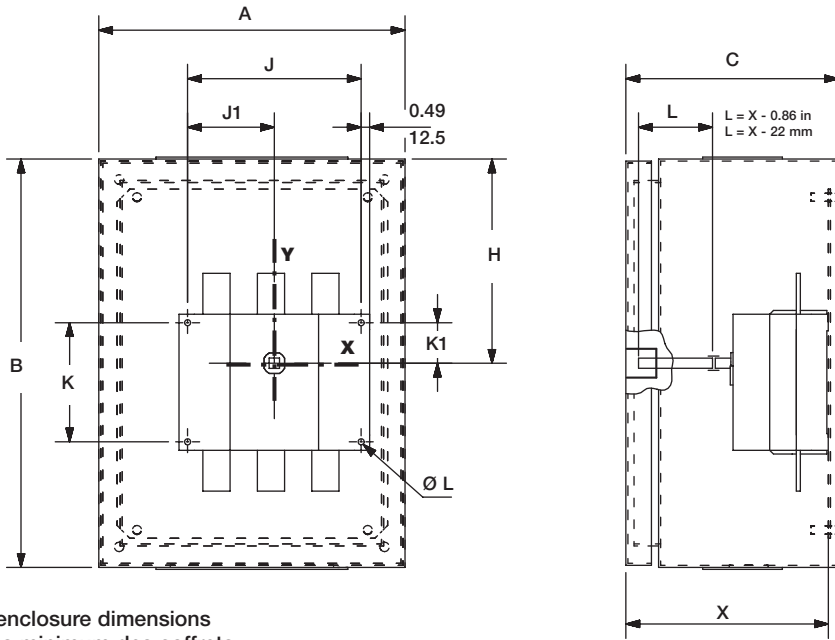


Dual dimensions in/mm
Double dimensions in/mm
Doble dimensiones in/mm



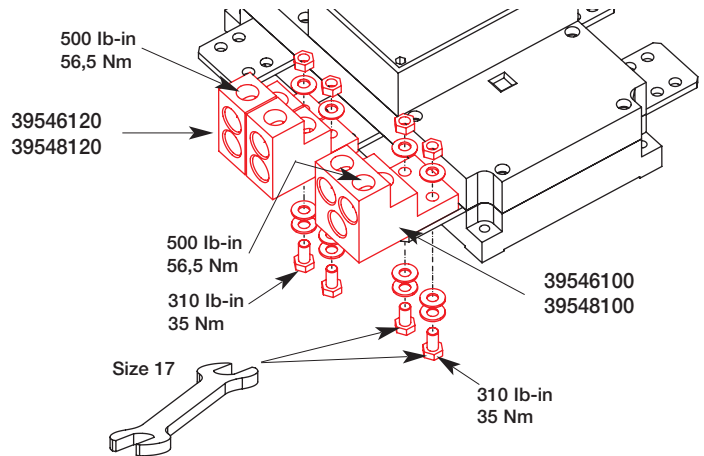
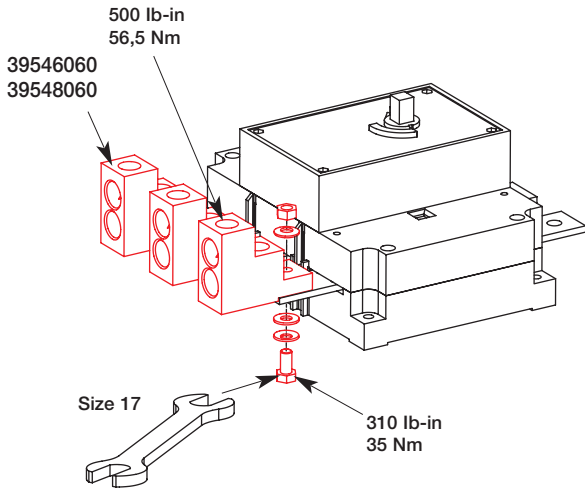
	A		B		C		H		H1		H2		J		J1		K		K1		K2		Y	
	in	mm	in	mm	in	mm	in	mm	in	mm	in	mm	in	mm	in	mm	in	mm	in	mm	in	mm	in	mm
① ③ 3 P	11.02	280	12.60	320	5.51	140	9.05	230	5.43	138	8.66	220	10.04	255	5	127.5	6.88	175	2.34	59,5	1.10	28	1.85	47
② ④ 4 P	14.17	360	12.60	320	5.51	140	9.05	230	5.43	138	8.66	220	13.19	335	6.59	167.5	6.88	175	2.34	59,5	1.10	28	1.85	47
⑤ ⑦ ⑨ 3 P	14.64	372	13	330	5.51	140	9.05	230	5.43	138	/	/	13.66	347	6.83	173.5	6.88	175	2.34	59,5	1.10	28	1.85	47
⑥ ⑧ ⑩ 4 P	19.37	492	13	330	5.51	140	9.05	230	5.43	138	/	/	18.38	467	9.19	233.5	6.88	175	2.34	59,5	1.10	28	1.85	47

- 1 27003040
- 2 27004040
- 3 27003060
- 4 27004060
- 5 27003080
- 6 27004080
- 7 27003100
- 8 27004100
- 9 27003120
- 10 27004120



Minimum enclosure dimensions
 Dimensions minimum des coffrets
 Dimensiones mínimas de las cajas

		A		B		C		H		J		J1		K		K1		ØL	
		in	mm	in	mm	in	mm	in	mm	in	mm	in	mm	in	mm	in	mm	in	mm
1	3 P	24	610	30	762	12	305	15	381	10.04	255	5	127.5	6.88	175	2.34	59,5	0.35	9
	4 P									13.19	335	6.59	167.5						
3	3 P	24	610	40	1016	12	305	20	508	11.04	255	5	127.5	6.88	175	2.34	59,5	0.35	9
	4 P									13.19	335	6.59	167.5						
5	3 P	24	610	40	1016	12	305	20	508	13.66	347	6.83	173.5	6.88	175	2.34	59,5	0.35	9
	4 P									18.38	467	9.19	233.5						
7	3 P	24	610	48	1220	12	305	23	585	13.66	347	6.83	173.5	6.88	175	2.34	59,5	0.35	9
	4 P									18.38	467	9.19	233.5						
9	3 P	30	762	75	1905	12	305	25	635	13.66	347	6.83	173.5	6.88	175	2.34	59,5	0.35	9
	4 P									18.38	467	9.19	233.5						



Cable size
 Section de câble
 Sección de cables

		Size / Section Sección (AWG)		Openings per lug	
		min.	max.		
39546060 3 P	1	3 P	# 2	600 Kcmil	2
	2	4 P			
39548060 4 P	3	3 P	# 2	600 Kcmil	2
	4	4 P			
39546100 3 P	5	3 P	# 2	600 Kcmil	3
	6	4 P			
39546120 3 P	7	3 P	# 2	600 Kcmil	2 x 2
	8	4 P			
39548120 4 P	9	3 P	# 2	600 Kcmil	2 x 2
	10	4 P			

