

Screwless Terminal Blocks

Part Number	Molding Designation	Current - Voltage		DIMENSION						SIZE		S	
				L		H		W		Wire Size			
P/N	Type	A	V	in.	mm	in.	mm	in.	mm	AWG	mm ²	in.	mm
DN-Q12	EURO Q 2,5/35	20	600	2.09	53	1.12	28.5	0.20	5	24-12	2.5	0.47	12
DN-Q10	EURO Q 4/35	30	600	2.28	58	1.36	34.5	0.24	6	24-10	4	0.59	15
DN-08	EURO Q 6/35	45	600	2.48	63	1.52	38.5	0.31	8	22-8	6	0.71	18
DN-QD12	EURO QD 2,5/35	20	600	3.86	98	1.48	37.5	0.20	5	24-12	2.5	0.47	12
DN-QD12X	EURO QD 2,5/35	20	600	3.86	98	1.48	37.5	0.20	5	24-12	2.5	0.47	12
DN-QD12L2	EURO QD 2,5/35	20	600	3.86	98	1.48	37.5	0.20	5	24-12	2.5	0.47	12
DN-QD12DR	EURO QD 2,5/35	20	600	3.86	98	1.48	37.5	0.20	5	24-12	2.5	0.47	12
DN-Q12-1-2	EURO QM1/2 2,5/35	20	600	2.70	68.5	1.12	28.5	0.20	5	24-12	2.5	0.47	12
DN-Q12-1-2L	EURO QM1/2 2,5/35	20	600	2.70	68.5	1.12	28.5	0.20	5	24-12	2.5	0.47	12
DN-Q12-1-2DR	EURO QM1/2 2,5/35	20	600	2.70	68.5	1.12	28.5	0.20	5	24-12	2.5	0.47	12
DN-Q12-2-2	EURO QM2/2 2,5/35	20	600	3.44	87.5	1.12	28.5	0.20	5	24-12	2.5	0.47	12
DN-Q12-2-2L2	EURO QM2/2 2,5/35	20	600	3.44	87.5	1.12	28.5	0.20	5	24-12	2.5	0.47	12
DN-Q12-2-2D2	EURO QM2/2 2,5/35	20	600	3.44	87.5	1.12	28.5	0.20	5	24-12	2.5	0.47	12
DN-QKBD12	EURO QT 2,5/35	20	600	2.70	68.5	1.12	28.5	0.20	5	24-12	2.5	0.47	12
DN-QG12	EURO QE 2,5/35	-	-	2.09	53	1.12	28.5	0.20	5	24-12	2.5	0.47	12
DN-QG10	EURO QE 4/35	-	-	2.28	58	1.36	34.5	0.24	6	24-10	4	0.59	15
DN-QG8	EURO QE 6/35	-	-	2.48	63	1.44	36.5	0.31	8	22-8	6	0.71	18
DN-QG12-1-2	EURO QME3 2,5/35	-	-	2.70	68.5	1.12	28.5	0.20	5	24-12	2.5	0.47	12
DN-QG12-2-2	EURO QME4 2,5/35	-	-	3.44	87.5	1.12	28.5	0.20	5	24-12	2.5	0.47	12
DN-QEMXM1	EURO XM1/2V 2,5/35	12	300	2.32	58.6	1.16	29.5	0.20	5	24-12	2.5	0.31	8
DN-QEMXDV	EURO XDV 2,5/35	12	300	3.03	77	2.05	52	0.20	5	24-12STR	2.5	0.31	8
		24-12SOL											
DN-QFE2	EURO F 2,5	300	2.20	56	1.34	34	0.20	5	24-12	2.5	0.35	9	
DN-QFE2L	EURO F 2,5	300	2.20	56	1.34	34	0.20	5	24-12	2.5	0.35	9	
DN-QFE4	EURO F 4	300	2.20	56	1.34	34	0.24	6	24-10	4	0.35	9	
DN-QFE4L	EURO F 4	300	2.20	56	1.34	34	0.24	6	24-10	4	0.35	9	
DN-QDIS2	EURO F 2,5	300	2.20	56	1.34	34	0.20	5	24-12	2.5	0.35	9	
DN-QDIS2L	EURO F 2,5	300	2.20	56	1.34	34	0.20	5	24-12	2.5	0.35	9	
DN-QDIS4	EURO F 4	300	2.20	56	1.34	34	0.24	6	24-10	4	0.35	9	
DN-QDIS4L	EURO F 4	300	2.20	56	1.34	34	0.24	6	24-10	4	0.35	9	

ED. 0209

It is mandatory that this Installation and User Manual be distributed by users and distributors even when the products are sold in non-original packaging.

AUTOMATIONDIRECT.COM assumes no liability for possible damages resulting from the disregard of these assembly instructions and/or any existing regulations.

- ✓ Terminal blocks should be installed by qualified persons, only.
- ✓ Terminal block installation must be carried out by strictly following the directions in this manual.
- ✓ Before connecting any wires, double-check that the electrical power is turned off.
- ✓ Do not connect any wires to the terminal block if any portion of the terminal block is damaged.
- ✓ The choice of the correct terminal block with regard to the specific application is the full responsibility of the installer.
- ✓ Wiring must comply with any UL or IEC standards.

2. Voltage and current values should not exceed the rated values as shown in chart on page 3.

3. Standard assembly and operating conditions (according to IEC 947-1 paragraph 6)

- Temperature: - 25°C ÷ 40°C - Relative humidity: 50 % at a temperature of 40°C
90 % at a temperature of 20°C

- Altitude: max 2,000 meters above sea level - Transport and storage temperature: - 20°C ÷ 80°C

4. We recommend the use of ferrules when multiple conductors are installed in a single terminal block clamp.

5. Please refer to the chart on page 3 of this document for wire strip length dimensions. This dimension is critical for a safe, reliable connection.

6. Please refer to the chart on page 3 for screw torque values. These values are in accordance with IEC Standard 947-1.

7. The minimum and maximum wire size utilized must comply with the wire range specified in the chart on page 3.

8. Always remove electrical power before opening or closing disconnect or knife blade terminal block lever arms.

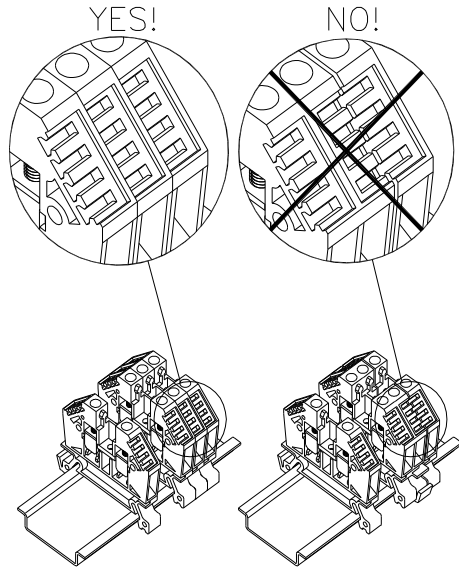
9. For both screw clamp and screwless terminal blocks, the screwdriver blade should be electrically insulated and of the appropriate size.

10. Terminal blocks should be used with all required accessories such as the DIN rail, end covers, and end brackets.

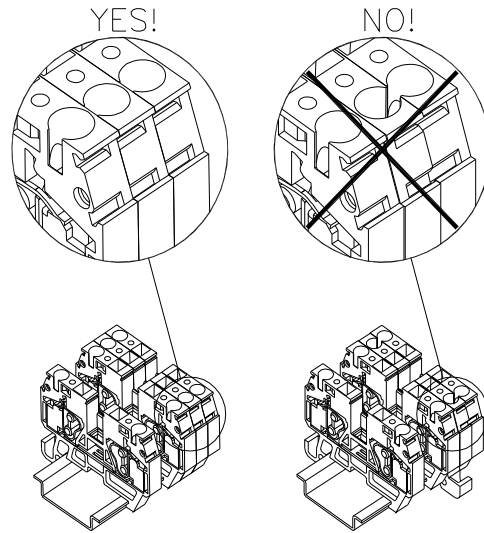
11. Modular terminal blocks must be positioned on the DIN rail in the same orientation (back to back) as shown in the illustration below in order to prevent the metal parts of adjacent terminals contacting each other. Ensure that each terminal block's mounting foot is oriented the same as its adjacent terminals.

12. When jumpering adjacent screw-terminal blocks with un-insulated jumpers, polycarbonate covers should be used to avoid accidental contact with live metal parts.

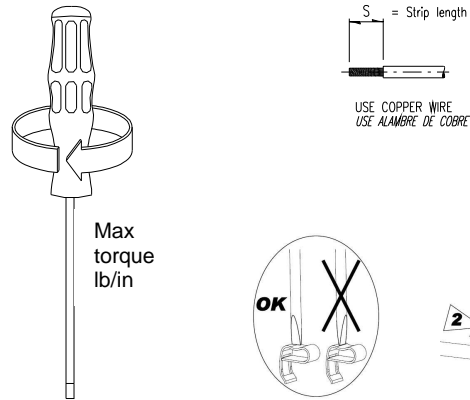
Ensure that metal parts of adjacent terminals do not contact each other.



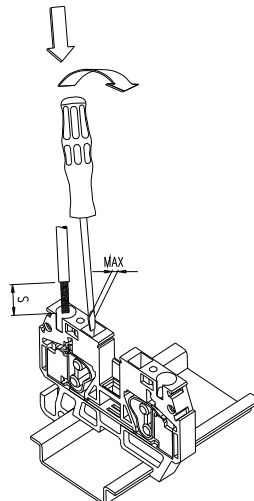
Screw Terminal Blocks



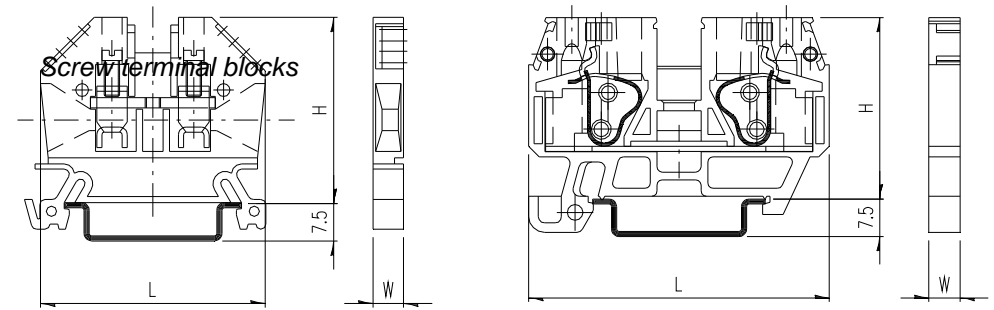
Screwless Terminal Blocks



DN-QFE... / DN-QEMX... / DN-QDIS...



DN-Q...



Part Number	Molding Designation	Current Voltage		DIMENSION						SIZE		TORQUE			
				L		H		W		Wire Size		s		(Max. torque)	
P/N	Type	A	V	in.	mm	in.	mm	in.	mm	AWG	mm ²	in	mm	lb/in	N/m
DN-T12 / DN-T12-A	EURO 2.5/35	20	600	1.73	44	1.42	36	0.20	5	24-12	2.5	0.39	10	4	0.5
DN-T10 / DN-T10-A	EURO 4/35	30	600	1.73	44	1.42	36	0.24	6	24-10	4	0.39	10	7	0.6
DN-T8	EURO 6/35	50	600	1.97	50	1.73	44	0.28	7	22-8	6	0.47	12	10	0.8
DN-T6	EURO 10/35	65	600	1.97	50	1.73	44	0.35	9	20-6	10	0.47	12	20	1.2
DN-T4	EURO 16-25/35	85	600	2.20	56	1.93	49	0.47	12	14-4	25	0.55	14	30	2.0
DN-T1/0	EURO 35-50/35	130	600	2.40	62	2.40	61	0.63	16	14-1/0	50	0.67	17	45	2.5
DN-T3/0	EURO 70/35	185	600	2.91	74	2.95	75	1.02	26	4-3/0	70	1.02	26	40	4.5
DN-D10 / DN-D10-A	EURO D 4-2/35	30	600	2.83	72	2.17	55	0.24	6	24-10	4	0.39	10	7	0.6
DN-D10X / DN-D10X-A	EURO D 4-2/35	30	600	2.83	72	2.17	55	0.24	6	24-10	4	0.39	10	7	0.6
DN-D10D / DN-D10D-A	EURO D 4-2/35	30	600	2.83	72	2.17	55	0.24	6	24-10	4	0.39	10	7	0.6
DN-M10 / DN-M10-A	EURO 4/15	30	300	1.26	32	1.10	28	0.24	6	24-10	4	0.39	10	7	0.6
DN-MG10	EURO E 4/15	-	-	1.26	32	1.10	28	0.24	6	18-10	4	0.39	10	7	0.6
DN-G10	EURO E 4/35	-	-	2.28	58	1.42	36	0.28	7	24-10	4	0.39	10	7/7	0.6/0.8
DN-G8	EURO E 6/35	-	-	2.28	58	1.73	44	0.31	8	22-8	6	0.47	12	10/7	0.8/0.8
DN-G6	EURO E 10/35	-	-	2.28	58	1.73	44	0.39	10	20-8	10	0.51	13	20/7	1.2/0.8
DN-G4	EURO E 16-25/35	-	-	2.28	58	1.93	49	0.47	12	24-4	25	0.55	14	30/7	2.0/0.8
DN-G1/0	EURO E 35-50/35	-	-	2.44	62	2.36	60	0.63	16	14-2/0	50	0.71	18	45/10	2.5/1.2
DN-F6	EURO S 10H/35	30	600	3.23	82	1.97	50	0.39	10	20-6	10	0.47	12	20	2.0
DN-F6L	EURO S 10H/35	30	600	3.23	82	1.97	50	0.39	10	20-6	10	0.48	13	20	2.0
DN-F10	EURO S 4LH/35	15	600	2.60	66	1.73	44	0.31	8	24-10	4	0.39	10	7	0.6
DN-F10L	EURO S 4LH/35	15	300	2.60	66	1.73	44	0.31	8	24-10	4	0.39	10	7	0.6
DN-KBD12	EURO T 2.5/35	20	600	2.05	52	1.38	35	0.20	5	22-12	2.5	0.39	10	4	0.5
DN-DIS10	EURO S 4LH/35	30	300	2.60	66	1.73	44	0.31	8	24-10	4	0.39	10	7	0.6
DN-TL14	EURO W 2.5/35	10	300	3.10	78.5	1.88	48	0.21	5.3	26-14	2.5	0.39	10	4.5	0.5
DN-TL14S	EURO Z 2.5/35	10	300	2.43	62	1.88	48	0.21	5.3	26-14	2.5	0.39	10	4.5	0.5
DN-TL14SLP	EURO Z 2.5 LP/35	10	300	2.43	62	1.88	48	0.21	5.3	26-14	2.5	0.39	10	4.5	0.5
DN-TL14SLN	EURO Z 2.5 LN/35	10	300	2.43	62	1.88	48	0.21	5.3	26-14	2.5	0.39	10	4.5	0.5
DN-FE2	EURO F 2.5	20	300	2.20	56	1.34	34	0.20	5	24-12	2.5	0.35	9	4.5	0.5
DN-FE4	EURO F 4	25	300	2.20	56	1.34	34	0.24	6	24-10	4	0.35	9	7	0.6
DN-FE2L	EURO F 2.5	20	300	2.20	56	1.34	34	0.20	5	24-12	2.5	0.35	9	4.5	0.5
DN-FE4L	EURO F 4	25	300	2.20	56	1.34	34	0.24	6	24-10	4	0.35	9	7	0.6
DN-DIS2	EURO F 2.5	20	300	2.20	56	1.34	34	0.20	5	24-12	2.5	0.35	9	4.5	0.5
DN-DIS4	EURO F 4	25	300	2.20	56	1.34	34	0.24	6	24-10	4	0.35	9	7	0.6
DN-DIS2L	EURO F 2.5	20	300	2.20	56	1.34	34	0.20	5	24-12	2.5	0.35	9	4.5	0.5
DN-DIS4L	EURO F 4	25	300	2.20	56	1.34	34	0.24	6	24-10	4	0.35	9	7	0.6
DN-EMXM1	EURO XM1/2V 2.5/35	12	300	2.32	58.9	1.16	29.5	0.20	5	24-12	2.5	0.31	8	4	0.5
DN-EMXDV	EURO XDV 2.5/35	12	300	3.03	77	2.05	52	0.20	5	24-12	2.5	0.31	8	4	0.5
DN-THERM1	EURO TC	-	50	1.65	42	1.08	27.5	0.24	6	30-20	0.5	0.79	20	0.875	0.1
DN-THERM2	EURO TC	10	300	1.65	42	1.08	27.5	0.24	6	20-16	1.5	0.79	20	0.875	0.1