

DRUM INSTRUCTION PROGRAMMING

(DL250-1/DL260 ONLY)



In This Chapter...

Introduction	6-2
Step Transitions.....	6-4
Overview of Drum Operation.....	6-8
Drum Control Techniques.....	6-10
Drum Instruction.....	6-12

Introduction

Purpose

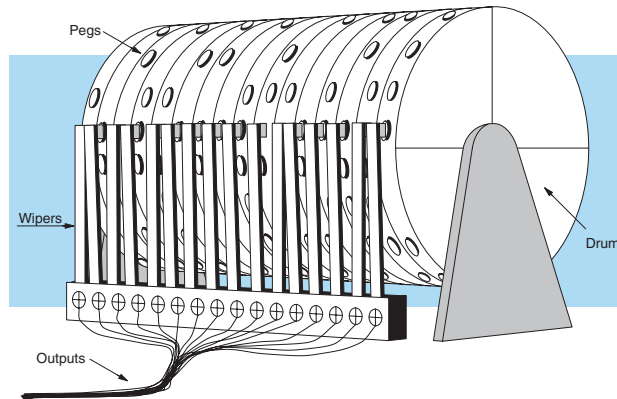
The four types of drum instructions available in the DL250-1 and DL260 CPUs electronically simulate an electro-mechanical drum sequencer. The instructions offer slight variations on the basic principle.

Drum Terminology

Drum instructions are best suited for repetitive processes that consist of a finite number of steps. They can do the work of many rungs of ladder logic with elegant simplicity. Therefore, drums can save a lot of programming and debugging time.

We introduce some terminology associated with the **drum** instruction by describing the original mechanical drum shown below. The mechanical drum generally has pegs on its curved surface. The pegs are populated in a particular **pattern**, representing a set of desired actions for machine control. A motor or solenoid rotates the drum a precise amount at specific times. During rotation, stationary wipers sense the presence of pegs (present = on, absent = off). This interaction makes or breaks electrical contact with the wipers, creating electrical **outputs** from the drum. The outputs are wired to devices on a machine for On/Off control.

Drums usually have a finite number of positions within one rotation, called **steps**. Each step represents some process step. At powerup, the drum **resets** to a particular step. The drum rotates from one step to the next based on a **timer**, or on some external **event**. During special conditions, a machine operator can manually increment the drum step using a **jog** control on the drum's drive mechanism. The contact closure of each wiper generates a unique on/off pattern called a **sequence**, designed for controlling a specific machine. Because the drum is circular, it automatically repeats the sequence once per rotation. Applications vary greatly, and a particular drum may rotate once per second, or as slowly as once per week.



Electronic drums provide the benefits of mechanical drums and more. For example, they have a **preset** feature that is impossible for mechanical drums: The preset function lets you move from the present step directly to any other step on command!

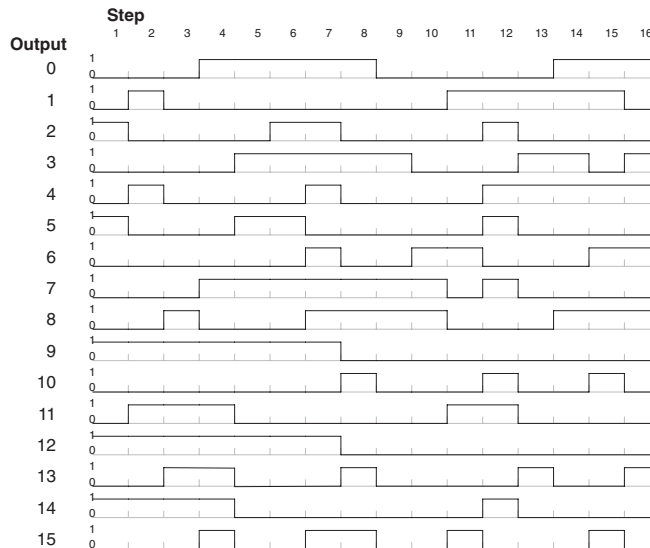
Drum Chart Representation

For editing purposes, the electronic drum is presented in chart form in *DirectSOFT* and in this manual. Imagine slicing the surface of a hollow drum cylinder between two rows of pegs, then pressing it flat. Now you can view the drum as a chart as shown below. Each row represents a step, numbered 1 through 16. Each column represents an output, numbered 0 through 15 (to match word bit numbering). The solid circles in the chart represent pegs (On state) in the mechanical drum, and the open circles are empty peg sites (Off state).

STEP	OUTPUTS															
	15	14	13	12	11	10	9	8	7	6	5	4	3	2	1	0
1	○	●	○	○	○	○	○	○	○	○	○	○	○	○	○	○
2	○	○	○	○	○	○	○	○	○	○	○	○	○	○	○	○
3	○	○	○	○	○	○	○	○	○	○	○	○	○	○	○	○
4	○	○	○	○	○	○	○	○	○	○	○	○	○	○	○	○
5	○	○	○	○	○	○	○	○	○	○	○	○	○	○	○	○
6	○	○	○	○	○	○	○	○	○	○	○	○	○	○	○	○
7	○	○	○	○	○	○	○	○	○	○	○	○	○	○	○	○
8	○	○	○	○	○	○	○	○	○	○	○	○	○	○	○	○
9	○	○	○	○	○	○	○	○	○	○	○	○	○	○	○	○
10	○	○	○	○	○	○	○	○	○	○	○	○	○	○	○	○
11	○	○	○	○	○	○	○	○	○	○	○	○	○	○	○	○
12	○	○	○	○	○	○	○	○	○	○	○	○	○	○	○	○
13	○	○	○	○	○	○	○	○	○	○	○	○	○	○	○	○
14	○	○	○	○	○	○	○	○	○	○	○	○	○	○	○	○
15	○	○	○	○	○	○	○	○	○	○	○	○	○	○	○	○
16	○	○	○	○	○	○	○	○	○	○	○	○	○	○	○	○

Output Sequences

The mechanical drum sequencer derives its name from sequences of control changes on its electrical outputs. The following figure shows the sequence of On/Off controls generated by the drum pattern above. Compare the two, and you will find that they are equivalent! If you can see their equivalence, you are well on your way to understanding drum instruction operation.



Step Transitions

Drum Instruction Types

There are four types of Drum instructions in the DL250-1 and DL260 CPUs:

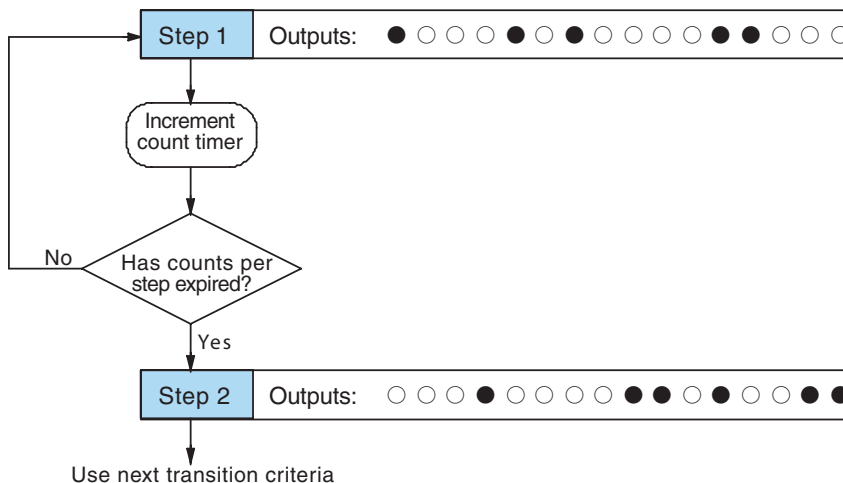
- Timed Drum with Discrete Outputs (DRUM)
- Time and Event Drum with Discrete Outputs (EDRUM)
- Masked Event Drum with Discrete Outputs (MDRMD)
- Masked Event Drum with Word Output (MDRMW)

The four drum instructions include time-based step transitions, and three include event-based transitions as well. Other options include outputs defined as a single word or as individual bits, and an output mask (individual output disable/enable).

Each drum has 16 steps, and each step has 16 outputs. Referring to the figure below, each output can be either a Y or C coil, offering programming flexibility. Step 1 has been assigned an arbitrary unique output pattern (○ = Off, ● = On) as shown.

Timer-Only Transitions

Drums move from one step to another based on time and/or an external event (input). Each step has its own transition condition which you assign during the drum instruction entry. The figure below shows how timer-only transitions work.



The drum remains in Step 1 for a specific duration (user-programmable). The timebase of the timer is programmable, from 0.01 seconds to 99.99 seconds. This establishes the resolution, or the duration, of each “tick of the clock”. Each step uses the same timebase, but has its own unique counts per step, which you program. The drum spends a specific amount of time in each step, given by the formula:

$$\text{Time in step} = 0.01 \text{ seconds} \times \text{Timebase} \times \text{Counts per step}$$

For example, if you program a 5 second time base and 12 counts for Step 1, then the drum will spend 60 seconds in Step 1. The maximum time for any step is given by the formula:

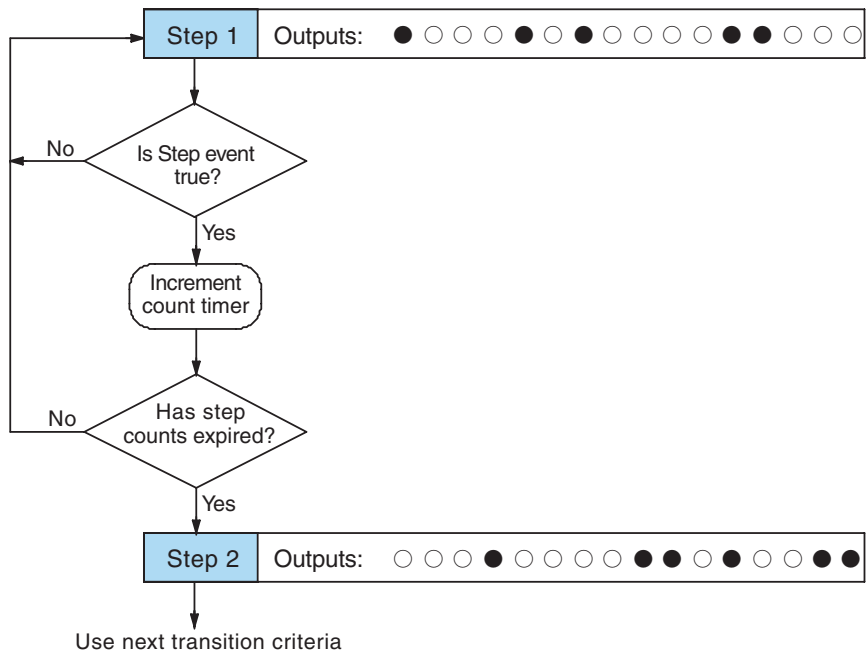
$$\begin{aligned} \text{Max Time per step} &= 0.01 \text{ seconds} \times 9999 \times 9999 \\ &= 999,800 \text{ seconds} = 277.7 \text{ hours} = 11.6 \text{ days} \end{aligned}$$



NOTE: When first choosing the timebase resolution, a good rule of thumb is to make it about 1/10 the duration of the shortest step in your drum. Then you will be able to optimize the duration of that step in 10% increments. Other steps with longer durations allow optimizing by even smaller increments (percentage-wise). Also, note that the drum instruction executes once per CPU scan. Therefore, it is pointless to specify a drum timebase that is much faster than the CPU scan time.

Timer and Event Transitions

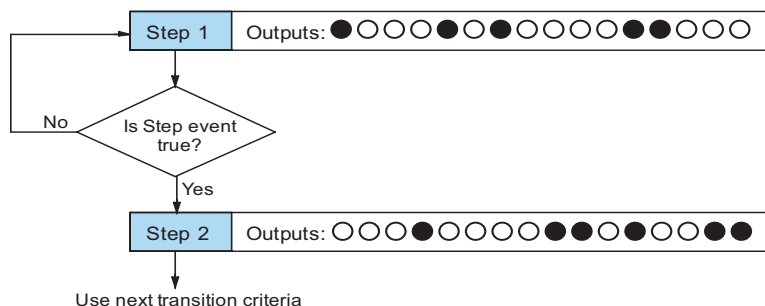
Step transitions may also occur based on time and/or external events. The figure below shows how step transitions work in these cases.



When the drum enters Step 1, it sets the output pattern as shown. Then it begins polling the external input programmed for that step. You can define event inputs as X, Y, or C discrete point types. Suppose we select X0 for the Step 1 event input. If X0 is off, then the drum remains in Step 1. When X0 is On, the event criteria is met and the timer increments. The timer increments as long as the event (X0) remains true. When the counts for Step 1 have expired, then the drum moves to Step 2. The outputs change immediately to match the new pattern for Step 2.

Event-Only Transitions

Step transitions do not require both the event and the timer criteria programmed for each step. You have the option of programming just one of the two, and even mixing transition types among all the steps of the drum. For example, you might want Step 1 to transition on an event, Step 2 to transition on time only, and Step 3 to transition on both time and an event. Furthermore, you may elect to use only part of the 16 steps, and only part of the 16 outputs.



Counter Assignments

Each drum instruction uses the resources of four counters in the CPU. When programming the drum instruction, you select the first counter number. The drum also uses the next three counters automatically. The counter bit associated with the first counter turns on when the drum has completed its cycle, going off when the drum is reset. These counter values and the counter bit precisely indicate the progress of the drum instruction, and can be monitored by your ladder program.

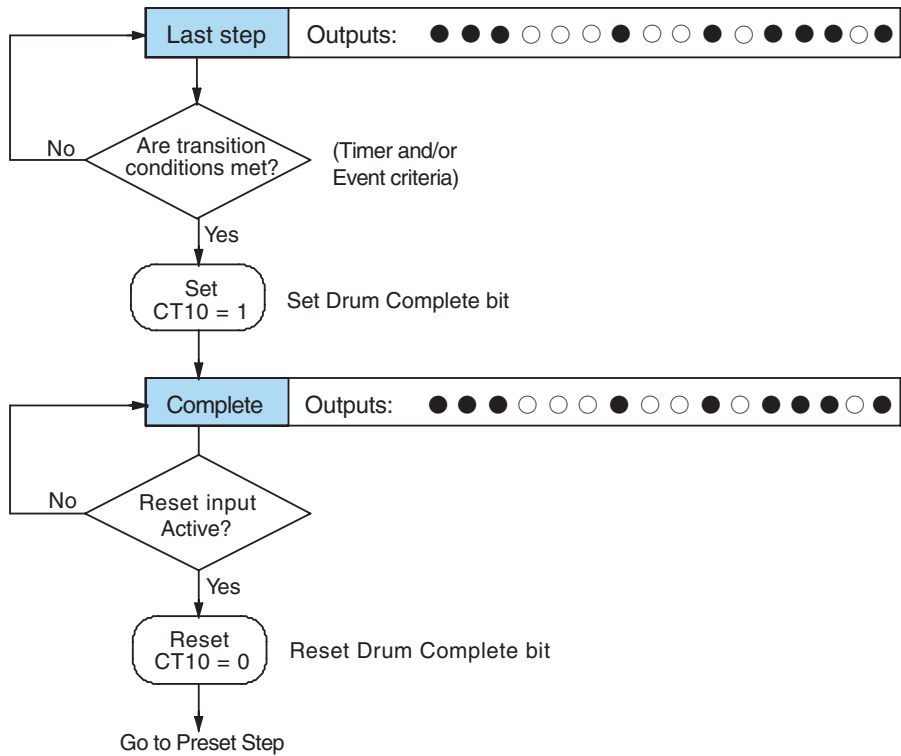
Suppose we program a timer drum to have 8 steps, and we select CT10 for the counter number (remember, counter numbering is in octal). Counter usage is shown to the right. The right column holds typical values, interpreted below.

Counter Assignments			
CT10	Counts in step	V1010	1528
CT11	Timer Value	V1011	0200
CT12	Preset Step	V1012	0001
CT13	Current Step	V1013	0004

CT10 shows that we are at the 1528th count in the current step, which is step 4 (shown in CT13). If we have programmed step 4 to have 3000 counts, then the step is just over half completed. CT11 is the count timer, shown in units of 0.01 seconds. So, each least-significant-digit change represents 0.01 seconds. The value of 200 means that we have been in the current count (1528) for 2 seconds (0.01×200). Finally, CT12 holds the preset step value which was programmed into the drum instruction. When the drum's Reset input is active, it presets to step 1 in this case. The value of CT12 changes only if the ladder program writes to it, or the drum instruction is edited and the program is restarted. Counter bit CT10 turns on when the drum cycle is complete, and turns off when the drum is reset.

Last Step Completion

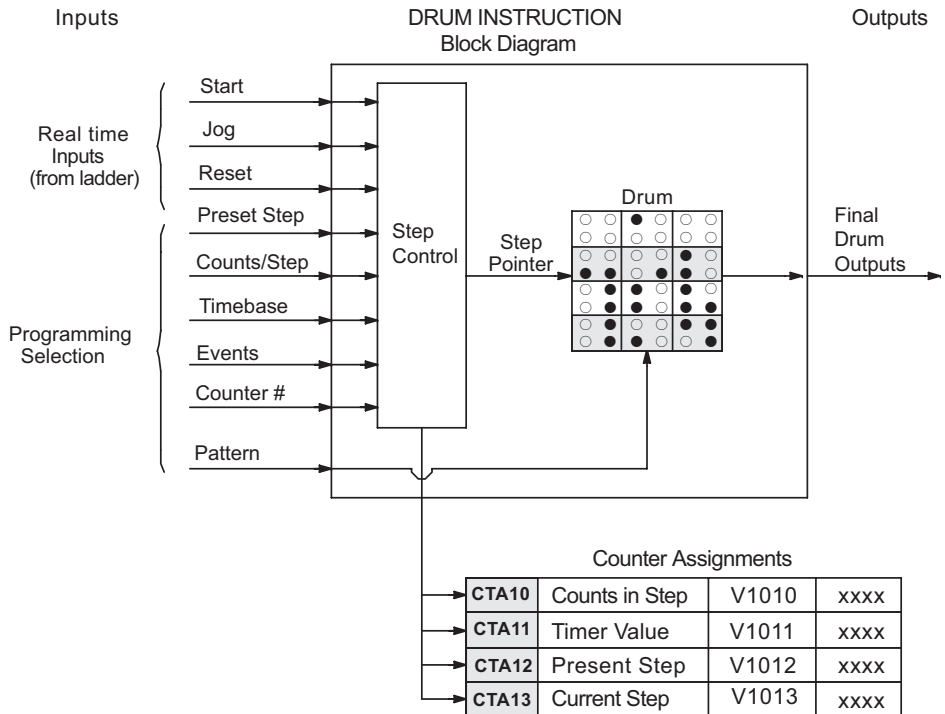
The last step in a drum sequence may be any step number, since partial drums are valid. Refer to the following figure. When the transition conditions of the last step are met, the drum sets the counter bit corresponding to the counter named in the drum instruction box (such as CT10). Then it moves to a final “drum complete” state. The drum outputs remain in the pattern defined for the last step. Having finished a drum cycle, the Start and Jog inputs have no effect at this point. The drum leaves the “drum complete” state when the Reset input becomes active (or on a program-to-run mode transition). It resets the drum complete bit (such as CT10), and then goes directly to the appropriate step number defined as the preset step.



Overview of Drum Operation

Drum Instruction Block Diagram

The drum instruction utilizes various inputs and outputs in addition to the drum pattern itself. Refer to the figure below.



The drum instruction accepts several inputs for step control, the main control of the drum. The inputs and their functions are:

- **Start** – The Start input is effective only when Reset is off. When Start is on, the drum timer runs if it is in a timed transition, and the drum looks for the input event during event transitions. When Start is off, the drum freezes in its current state (Reset must remain off), and the drum outputs maintain their current on/off pattern.
- **Jog** – The jog input is only effective when Reset is off (Start may be either on or off). The jog input increments the drum to the next step on each off-to-on transition (only EDRUM supports the jog input).
- **Reset** – The Reset input has priority over the Start input. When Reset is on, the drum moves to its preset step. When Reset is off, then the Start input operates normally.
- **Preset Step** – A step number from 1 to 16 that you define (typically is step 1). The drum moves to this step whenever Reset is on, and whenever the CPU first enters run mode.

- **Counts/Step** – The number of timer counts the drum spends in each step. Each step has its own counts parameter. However, programming the counts/step is optional.
- **Timer Value** – the current value of the counts/step timer.
- **Counter #** – The counter number specifies the first of four consecutive counters which the drum uses for step control. You can monitor these to determine the drum's progress through its control cycle.
- **Events** – Either an X, Y, C, S, T, CT, or SP type discrete point serves as step transition inputs. Each step has its own event. However, programming the event is optional on Timer/Event Drums.



WARNING: The outputs of a drum are enabled any time the CPU is in Run Mode. The Start Input does not have to be on, and the Reset input does not disable the outputs. Upon entering Run Mode, drum outputs automatically turn on or off according to the pattern of the current step of the drum. This initial step number depends on the counter memory configuration: non-retentive versus retentive.

Powerup State of Drum Registers

The choice of the starting step on powerup and program-to-run mode transitions are important to consider for your application. Please refer to the following chart. If the counter memory is configured as non-retentive, the drum is initialized the same way on every powerup or program-to-run mode transition. However, if the counter memory is configured to be retentive, the drum will stay in its previous state.

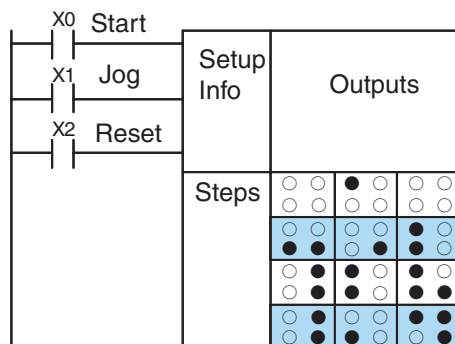
Counter Number	Function	Initialization on Powerup	
		Non-Retentive Case	Retentive Case
CTA(n)	Current Step Count	Initialize = 0	Use Previous (no change)
CTA(n + 1)	Counter Timer Value	Initialize = 0	Use Previous (no change)
CTA(n + 2)	Preset Step	Initialize = Preset Step #	Use Previous (no change)
CTA(n + 3)	Current Step #	Initialize = Preset Step #	Use Previous (no change)

Applications with relatively fast drum cycle times typically will need to be reset on powerup, using the non-retentive option. Applications with relatively long drum cycle times may need to resume at the previous point where operations stopped, using the retentive case. The default option is the retentive case. This means that if you initialize scratchpad V-memory, the memory will be retentive.

Drum Control Techniques

Drum Control Inputs

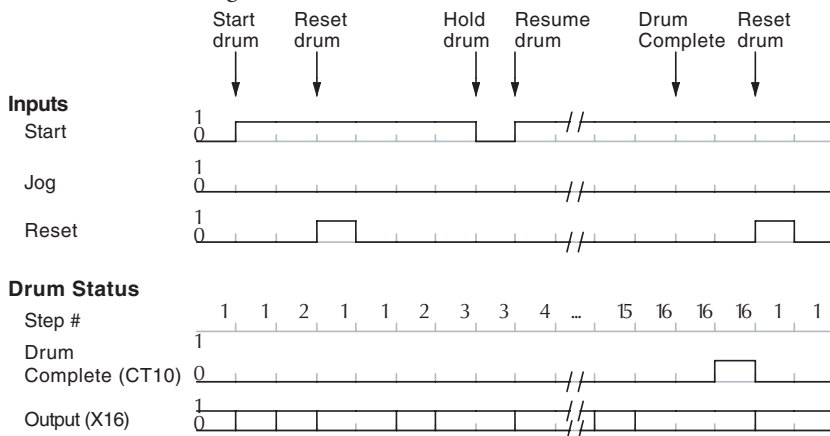
Now we are ready to put together the concepts on the previous pages and demonstrate general control of the drum instruction box. The drawing to the right shows a simplified generic drum instruction. Inputs from ladder logic control the Start, Jog, and Reset Inputs (only the EDRUM instruction supports the Jog Input). The first counter bit of the drum (CT10, for example) indicates the drum cycle is done.



The timing diagram below shows an arbitrary timer drum input sequence and how the drum responds. As the CPU enters Run mode it initializes the step number to the preset step number (typically it is Step 1). When the Start input turns on, the drum begins running, waiting for an event and/or running the timer (depends on the setup).

After the drum enters Step 2, Reset turns On while Start is still On. Since Reset has priority over Start, the drum goes to the preset step (Step 1). Note that the drum is *held* in the preset step during Reset, and that step does *not run* (respond to events or run the timer) until Reset turns off.

After the drum has entered step 3, the Start input goes off momentarily, halting the drum's timer until Start turns on again.

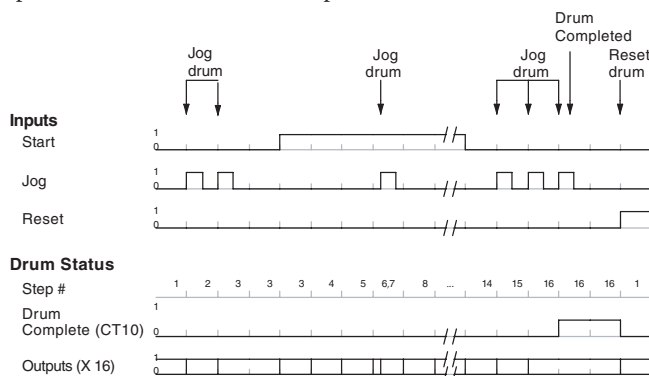


When the drum completes the last step (Step 16 in this example), the Drum Complete bit (CT10) turns on, and the step number remains at 16. When the Reset input turns on, it turns off the Drum Complete bit (CT10), and forces the drum to enter the preset step.

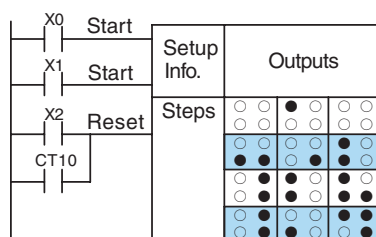
NOTE: The timing diagram shows all steps using equal time durations. Step times can vary greatly, depending on the counts/step programmed.



As the drum enters step 14, the Start input turns off. Two more Jog signals moves the drum to step 16. However, note that a third Jog signal is required to move the drum through step 16 to “drum complete.” Finally, a Reset input signal arrives which forces the drum into the preset step and turns off the drum complete bit.



Applications often require drums that automatically start over once they complete a cycle. This is easily accomplished using the drum complete bit. In the figure to the right, the drum instruction setup is for CT10, so we logically OR the drum complete bit (CT10) with the Reset input. When the last step is done, the drum turns on CT10 which resets itself to the preset step, also resetting CT10. Contact X2 still works as a manual reset.



The outputs of a drum are enabled any time the CPU is in run mode. On program-to-run mode transitions, the drum goes to the preset step, and the outputs energize according to the pattern of that step. If your application requires all outputs to be off at powerup, make the preset step in the drum a “reset step,” with all outputs off.

Each event-based transition accepts only one contact reference for the event. However, this does not limit events to just one contact. Just use a control relay contact such as C0 for the step transition event. Elsewhere in ladder logic, you may use C0 as an output coil, making it dependent on many other “events” (contacts).

Drum Instructions

All of the DL250-1 and DL260 drum instructions may be programmed using *DirectSOFT*. The EDRUM is the only drum instruction that can be programmed with a handheld programmer (firmware version v2.21 or later). This section covers entry using *DirectSOFT* for all instructions plus the handheld mnemonics for the EDRUM instruction.

Timed Drum with Discrete Outputs (DRUM)

- ☒ 230 The Timed Drum with Discrete Outputs is the most basic of the DL250-1 and DL260 drum instructions. It operates according to the principles covered on the previous pages. Below is the instruction in chart form as displayed by *DirectSOFT*.
- ☒ 240
- ☒ 250-1
- ☒ 260

DirectSOFT Display

Control Inputs

- Start
- Reset

Step Preset

Counter Number

Timebase

Discrete Output Assignment

Step Number

Counts per Step

Output Pattern

☐ = Off, ☒ = On

The Timed Drum features 16 steps and 16 outputs. Step transitions occur only on a timed basis, specified in counts per step. Unused steps must be programmed with “counts per step” = 0 (this is the default entry). The discrete output points may be individually assigned as X, Y, or C types, or may be left unused. The output pattern may be edited graphically with *DirectSOFT*.

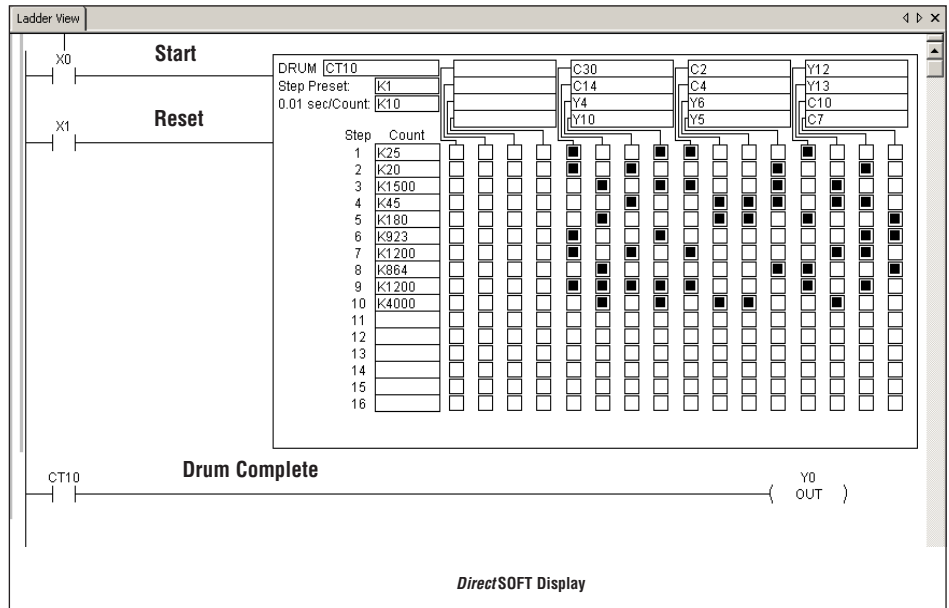
Whenever the Start input is energized, the drum’s timer is enabled. It stops when the last step is complete, or when the Reset input is energized. The drum enters the preset step chosen upon a CPU program-to-run mode transition, and whenever the Reset input is energized.

Drum Parameters	Field	Data Types	Ranges
Counter Number	aaa		0 - 174 (DL250-1) 0 - 374 (DL260)
Step Preset	bbb	K	1 - 16
Timer base	cccc	K	0 - 99.99 seconds
Counts per step	dddd	K	0 - 9999
Discrete Outputs	F ffff	X, Y, C	see page 3-55 or page 3-56

Drum instructions use four counters in the CPU. The ladder program can read the counter values for the drum's status. The ladder program may write a new preset step number to CTA(n+2) at any time. However, the other counters are for monitoring purposes only.

Counter Number	DL250-1 Ranges of (n)	DL260 Ranges of (n)	Function	Counter Bit Function
CTA(n)	0 - 174	0 - 374	Counts in step	CT(n) = Drum Complete
CTA(n+1)	1 - 175	1 - 375	Timer value	CT(n+1) = (not used)
CTA(n+2)	2 - 176	2 - 376	Preset Step	CT(n+2) = (not used)
CTA(n+3)	3 - 177	3 - 377	Current Step	CT(n+3) = (not used)

The following ladder program shows the DRUM instruction in a typical ladder program, as shown by *DirectSOFT*. Steps 1 through 10 are used, and 12 of the 16 output points are used. The preset step is step 1. The timebase runs at $(K10 \times 0.01) = 0.1$ second per count. Therefore, the duration of step 1 is $(25 \times 0.1) = 2.5$ seconds. In the last rung, the Drum Complete bit (CT10) turns on output Y0 upon completion of the last step (step 10). A drum reset also resets CT10.



Event Drum (EDRUM)

✗ 230

✗ 240

✓ 250-1

✓ 260

The Event Drum (EDRUM) features time-based and event-based step transitions. It operates according to the general principles of drum operation covered in the beginning of this chapter. Below is the instruction as displayed by *DirectSOFT*.

DirectSOFT 5 Display

Drum Editor

EDRUM C Taa

Step Preset: Kbb

0.01 sec/Count: Kcccc

Control Inputs

- Start
- Jog
- Reset

Step Number

Counts per Step

Event per Step

Output Pattern

□ = Off, ■ = On

Counter Number

Step Preset

Timebase

Discrete Output Assignment

OK Cancel

The Event Drum features 16 steps and 16 discrete outputs. Step transitions occur on timed and/or event basis. The jog input also advances the step on each off-to-on transition. Time is specified in counts per step, and events are specified as discrete contacts. Unused steps and events must be left blank. The discrete output points may be individually assigned.

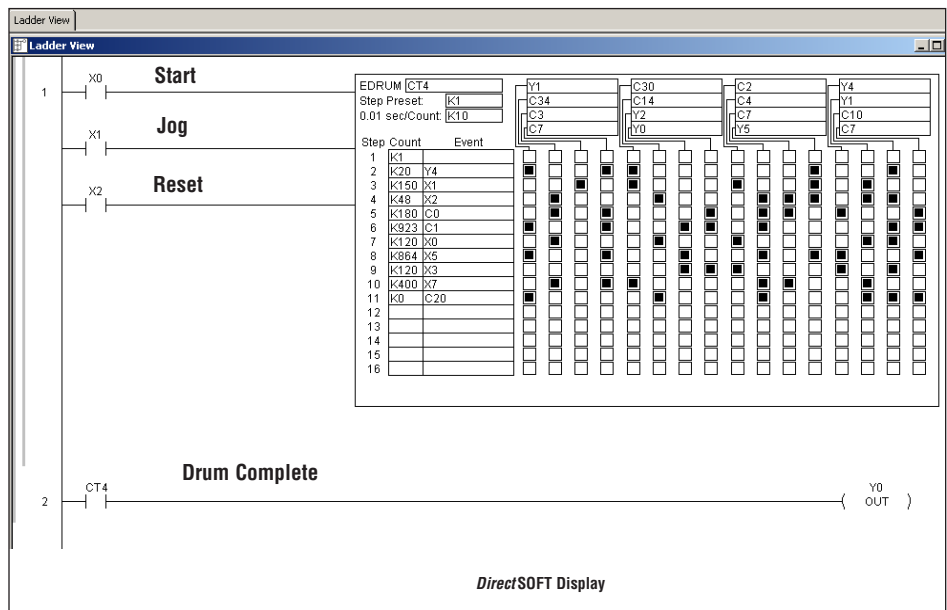
Drum Parameters	Field	Data Types	Ranges
Counter Number	aaa	-	0 - 174 (DL250-1) 0 - 374 (DL260)
Step Preset	bb	K	1 - 16
Timer base	cccc	K	0 - 99.99 seconds
Counts per step	dddd	K	0 - 9999
Event	eeee	X, Y, C, S, T, CT, SP	see page 3-55 or page 3-56
Discrete Outputs	F ffff	X, Y, C	

Whenever the Start input is energized, the drum's timer is enabled. As long as the event is true for the current step, the timer runs during that step. When the step count equals the counts per step, the drum transitions to the next step. This process stops when the last step is complete, or when the Reset input is energized. The drum enters the preset step chosen upon a CPU program-to-run mode transition, and whenever the Reset input is energized.

Drum instructions use four counters in the CPU. The ladder program can read the counter values for the drum's status. The ladder program may write a new preset step number to CTA(n+2) at any time. However, the other counters are for monitoring purposes only.

Counter Number	DL250-1 Ranges of (n)	DL260 Ranges of (n)	Function	Counter Bit Function
CTA(n)	0 - 174	0 - 374	Counts in step	CT(n) = Drum Complete
CTA(n+1)	1 - 175	1 - 375	Timer value	CT(n+1) = (not used)
CTA(n+2)	2 - 176	2 - 376	Preset Step	CT(n+2) = (not used)
CTA(n+3)	3 - 177	3 - 377	Current Step	CT(n+3) = (not used)

The following ladder program shows the EDRUM instruction in a typical ladder program, as shown by *DirectSOFT*. Steps 1 through 11 are used, and all 16 output points are used. The preset step is step 1. The timebase runs at $(K10 \times 0.01) = 0.1$ second per count. Therefore, the duration of step 1 is $(1 \times 0.1) = 0.1$ second. Note that step 1 is time-based only (event is left blank). And, the output pattern for step 1 programs all outputs off, which is a typically desirable powerup condition. In the last rung, the Drum Complete bit (CT4) turns on output Y0 upon completion of the last step (step 11). A drum reset also resets CT4.



NOTE: If all events are true in an event only drum (a drum with 0 counts per step in all steps), the PLC completes one step of the drum per scan; thus, the drum will be complete in 16 scans. However, as the outputs of the drum are enabled any time the CPU is in RUN Mode, the drum discrete outputs will be energized as pulsed outputs for each scan.

The EDRUM instruction can also be programmed using a Handheld Programmer. This section explains entry via the Handheld Programmer.

X0	Start	Setup Info	Outputs								
X1	Jog		Mask								
X2	Reset	Steps	○	○	○	●	○	○	○	○	○
			○	○	○	○	○	○	○	○	○
			●	○	○	○	○	○	○	○	○
			○	○	○	○	○	○	○	○	○
			○	○	○	○	○	○	○	○	○
			○	○	○	○	○	○	○	○	○
			○	○	○	○	○	○	○	○	○
			○	○	○	○	○	○	○	○	○

Handheld Programmer Keystrokes

(Repeat for Store X1 and Store X2)

EDRUM CNT4	SHFT	E ₄	D ₃	R ORN	U ISG	M ORST	→	E ₄	ENT
------------	------	----------------	----------------	-------	-------	--------	---	----------------	-----

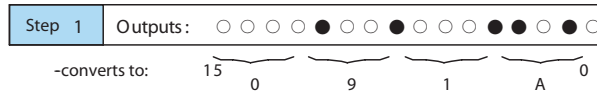
After entering the EDRUM mnemonic as above, the handheld programmer creates an input form for all the drum parameters. The input form consists of approximately fifty or more default mnemonic entries containing DEF (define) statements. The default mnemonics are already “input” for you, so they appear automatically. Use the NXT and PREV keys to move forward and backward through the form. Only the editing of default values is required, thus eliminating many keystrokes. The entries required for the basic timer drum are in the chart below.



NOTE: Default entries for output points and events are “DEF 0000”, which means they are unassigned. If you need to go back and change an assigned output as unused again, enter “K0000”. The entry will again show as “DEF 0000”.

Drum Parameters	Multiple Entries	Mnemonic / Entry	Default Mnemonic	Valid Data Types	Ranges
Start Input	--	STR (plus input rung)	--	--	--
Jog Input	--	STR (plus input rung)	--	--	--
Reset Input	--	STR (plus input rung)	--	--	--
Drum Mnemonic	--	DRUM CNT aa	--	CT	0 - 174 (DL250-1) 0 - 374 (DL260)
Step Preset	1	bb	DEF K0000	K	1 - 16
Timer base	1	cccc	DEF K0000	K	0 - 9999
Counts per step	16	dddd	DEF K0000	K	0 - 9999
Events	16	eeee	DEF K0000	X, Y, C, S, T, CT, SP	see either page 3-55 or page 3-56
Output points	16	ffff	DEF K0000	X, Y, C	
Output Mask	16	aaaa	DEF K0000	K	

Using the DRUM entry chart (two pages before), we show the method of entry for the basic time/event drum instruction. First, we convert the output pattern for each step to the equivalent hex number, as shown in the following example.



The following diagram shows the method for entering the previous EDRUM example on the HPP. The default entries of the form are in parenthesis. After the drum instruction entry (on the fourth row), the remaining keystrokes over-write the numeric portion of each default DEF statement.



NOTE: Drum editing requires Handheld Programmer firmware version 2.21 or later.

6

Handheld Programmer Keystrokes

Start \$ STR → A 0 ENT

Jog \$ STR → B 1 ENT

Reset \$ STR → C 2 ENT

Drum Inst. SHFT E 4 D 3 R ORN U ISG M ORST → E 4 ENT

Note: You may use the NXT and PREV keys to skip past entries for unused outputs or steps.

Preset Step (DEF K0001) NEXT

Time Base (DEF K0000) G 6 E 4 NEXT

Outputs {

1 (DEF 0000) SHFT C 2 H 7 NEXT

(DEF 0000) SHFT C 2 B 1 A 0 NEXT

(DEF 0000) SHFT Y MLS B 1 NEXT

(DEF 0000) SHFT Y MLS E 4 NEXT

(DEF 0000) SHFT Y MLS F 5 NEXT

(DEF 0000) SHFT Y MLS G 6 NEXT

(DEF 0000) SHFT C 2 E 4 NEXT

(DEF 0000) SHFT C 2 C 2 NEXT

(DEF 0000) SHFT Y MLS A 0 NEXT

(DEF 0000) SHFT Y MLS C 2 NEXT

(DEF 0000) SHFT C 2 B 1 E 4 NEXT

(DEF 0000) SHFT C 2 D 3 A 0 NEXT

(DEF 0000) SHFT Y MLS G 6 NEXT

(DEF 0000) SHFT Y MLS H 7 NEXT

(DEF 0000) SHFT C 2 D 3 E 4 NEXT

16 (DEF 0000) SHFT Y MLS B 1 NEXT

Handheld Programmer Keystrokes cont'd

Counts/Step {

1 (DEF K0000) F 5 NEXT

(DEF K0000) C 2 A 0 NEXT

(DEF K0000) B 1 F 5 A 0 NEXT

(DEF K0000) E 4 F 5 NEXT

(DEF K0000) B 1 I 8 A 0 NEXT

(DEF K0000) J 9 C 2 D 3 NEXT

(DEF K0000) B 1 C 2 A 0 NEXT

(DEF K0000) I 8 G 6 E 4 NEXT

(DEF K0000) B 1 C 2 A 0 A 0 NEXT

(DEF K0000) E 4 A 0 A 0 NEXT

(DEF K0000) NEXT

(DEF K0000) NEXT

(DEF K0000) NEXT

(DEF K0000) NEXT ← skip over unused steps

(DEF K0000) NEXT

(DEF K0000) NEXT

16 (DEF K0000) NEXT

(Continued on next page)

Handheld Programmer Keystrokes cont'd

Events	1	(DEF 0000)	NEXT	← skip over unused event
		(DEF 0000)	SHFT Y MLS E 4	NEXT
		(DEF 0000)	SHFT X SET B 1	NEXT
		(DEF 0000)	SHFT X SET C 2	NEXT
		(DEF 0000)	SHFT C 2 A 0	NEXT
		(DEF 0000)	SHFT C 2 B 1	NEXT
		(DEF 0000)	SHFT X SET A 0	NEXT
		(DEF 0000)	SHFT X SET F 5	NEXT
		(DEF 0000)	SHFT X SET D 3	NEXT
		(DEF 0000)	SHFT Y MLS H 7	NEXT
		(DEF 0000)	SHFT C 2 C 2 A 0	NEXT
		(DEF 0000)	NEXT	
		(DEF 0000)	NEXT	
		(DEF 0000)	NEXT	
		(DEF 0000)	NEXT	
	16	(DEF 0000)	NEXT	

Output Mask

Handheld Programmer Keystrokes cont'd

Output Mask	1	(DEF K0000)	NEXT	← step 1 pattern = 0000
		(DEF K0000)	J 9 I 8 B 1 C 2	NEXT
		(DEF K0000)	C 2 I 8 J 9 E 4	NEXT
		(DEF K0000)	E 4 E 4 H 7 G 6	NEXT
		(DEF K0000)	F 5 B 1 G 6 J 9	NEXT
		(DEF K0000)	J 9 D 3 E 4 D 3	NEXT
		(DEF K0000)	E 4 E 4 I 8 G 6	NEXT
		(DEF K0000)	J 9 E 4 F 5 J 9	NEXT
		(DEF K0000)	D 3 I 8 SHFT A 0	NEXT
		(DEF K0000)	F 5 I 8 G 6 E 4	NEXT
		(DEF K0000)	I 8 E 4 E 4 H 7	NEXT
		(DEF K0000)	NEXT	
		(DEF K0000)	NEXT	
		(DEF K0000)	NEXT	← unused steps
		(DEF K0000)	NEXT	
	16	(DEF K0000)	NEXT	

Last rung

\$ STR	GY CNT	E 4	NEXT
SHFT	Y MLS	A 0	NEXT



NOTE: Remember, you may use the NXT and PREV keys to skip past entries for unused outputs or steps.

NOTE: For ease of operation when using the EDRUM instruction, we recommend using **DirectSOFT** over the handheld programmer.

Masked Event Drum with Discrete Outputs (MDRMD)

X 230

X 240

✓ 250-1

✓ 260

The Masked Event Drum with Discrete Outputs has all the features of the basic Event Drum plus final output control for each step. It operates according to the general principles of drum operation covered in the beginning of this section. Below is the instruction in chart form as displayed by *DirectSOFT*.

DirectSOFT Display

Counter Number **Step Preset** **Discrete Output Assignment**

Timebase **Output Mask Word**

Start **Control Inputs** { **Jog** **Reset** }

Step Number **Counts per Step** **Event per Step** **Output Pattern**

☐ = Off, ☒ = On

MDRMD C1aaa
Step Preset: Kbbb / Kcccc
0.01 sec/Count:

Step Count Event

1 Kddd Eeeee
2 Kddd Eeeee
3 Kddd Eeeee
4 Kddd Eeeee
5 Kddd Eeeee
6 Kddd Eeeee
7 Kddd Eeeee
8 Kddd Eeeee
9 Kddd Eeeee
10 Kddd Eeeee
11 Kddd Eeeee
12 Kddd Eeeee
13 Kddd Eeeee
14 Kddd Eeeee
15 Kddd Eeeee
16 Kddd Eeeee

15 Ggggg

OK Cancel

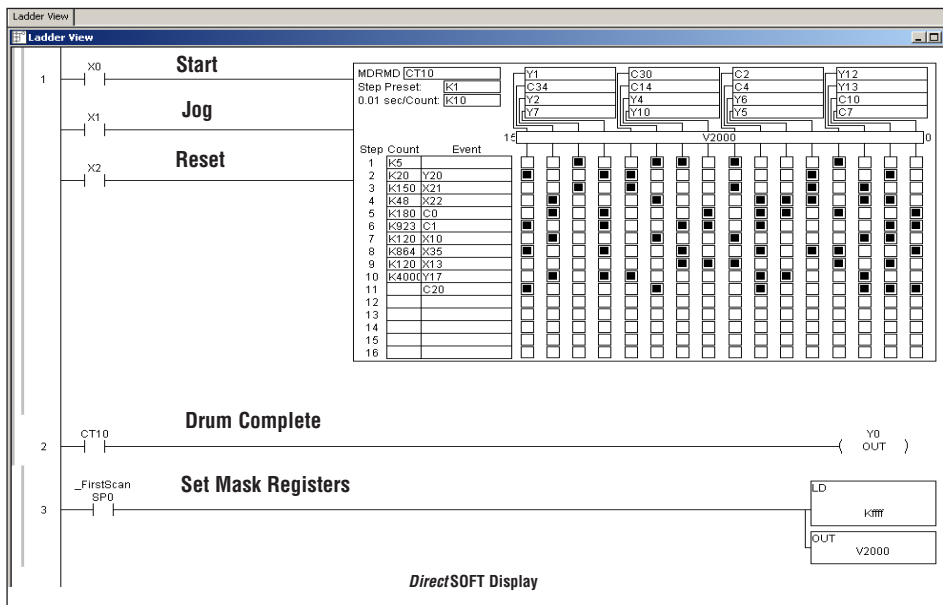
The Masked Event Drum with Discrete Outputs features 16 steps and 16 outputs. Drum outputs are logically ANDed bit-by-bit with an output mask word for each step. The Ggggg field specifies the beginning location of the 16 mask words. Step transitions occur on timed and/or event basis. The jog input also advances the step on each off-to-on transition. Time is specified in counts per step, and events are specified as discrete contacts. Unused steps and events can be left blank (this is the default entry). Whenever the Start input is energized, the drum's timer is enabled. As long as the event is true for the current step, the timer runs during that step. When the step count equals the counts per step, the drum transitions to the next step. This process stops when the last step is complete, or when the Reset input is energized. The drum enters the preset step chosen upon a CPU program-to-run mode transition, and whenever the Reset input is energized.

Drum Parameters	Field	Data Types	Ranges
Counter Number	aaa	—	0 - 174 (DL250-1) 0 - 374 (DL260)
Step Preset	bb	K	1 – 16
Timer base	cccc	K	0 – 99.99 seconds
Counts per step	dddd	K	0 – 9999
Event	eeee	X, Y, C, S, T, ST, GX, GY, CT, SP	
Discrete Outputs	Ffff	X, Y, C, GX, GY	see either page 3-55 or page 3-56
Output Mask	Ggggg	V	

Drum instructions use four counters in the CPU. The ladder program can read the counter values for the drum's status. The ladder program may write a new preset step number to CTA(n+2) at any time. However, the other counters are for monitoring purposes only.

Counter Number	DL250-1 Ranges of (n)	DL260 Ranges of (n)	Function	Counter Bit Function
CTA(n)	0 - 174	0 - 374	Counts in step	CT(n) = Drum Complete
CTA(n+1)	1 - 175	1 - 375	Timer value	CT(n+1) = (not used)
CTA(n+2)	2 - 176	2 - 376	Preset Step	CT(n+2) = (not used)
CTA(n+3)	3 - 177	3 - 377	Current Step	CT(n+3) = (not used)

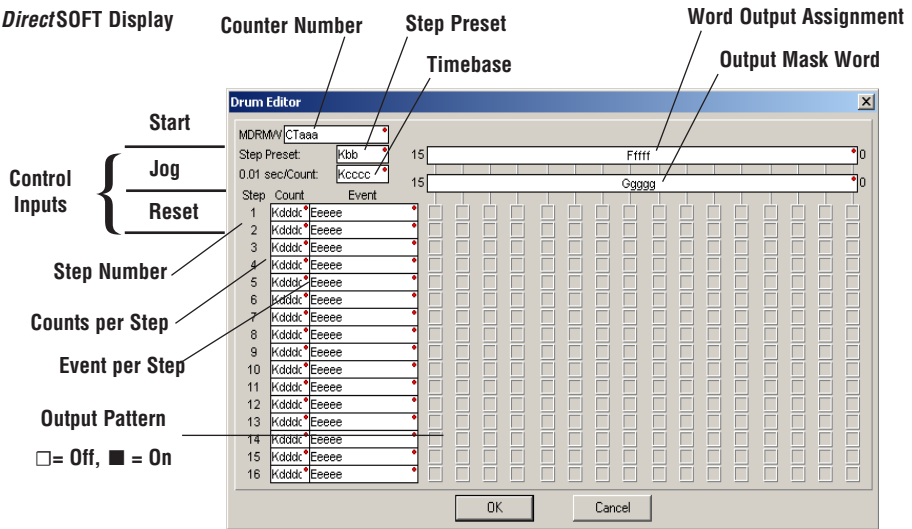
The following ladder program shows the MDRMD instruction in a typical ladder program, as shown by *DirectSOFT*. Steps 1 through 11 are used, and all 16 output points are used. The output mask word is at V2000. The final drum outputs are shown above the mask word as individual bits. The data bits in V2000 are logically ANDed with the output pattern of the current step in the drum. If you want all drum outputs to be off after powerup, write zeros to V2000 on the first scan. Ladder logic may update the output mask at any time to enable or disable the drum outputs. The preset step is step 1. The timebase runs at $(K10 \times 0.01) = 0.1$ second per count. Therefore, the duration of step 1 is $(5 \times 0.1) = 0.5$ seconds. Note that step 1 is time-based only (event is left blank). In the last rung, the Drum Complete bit (CT10) turns on output Y0 upon completion of the last step (step 11). A drum reset also resets CT10.



NOTE: The ladder program must load constants in V2000 through V2012 to cover all mask registers for the eleven steps used in this drum.

Masked Event Drum with Word Output (MDRMW)

- ☒ 230 The Masked Event Drum with Word Output features outputs organized as bits of a single word, rather than discrete points. It operates according to the general principles of drum operation covered in the beginning of this section. Below is the instruction in chart form as displayed by *DirectSOFT*.
- ☒ 240
- ☒ 250-1
- ☒ 260



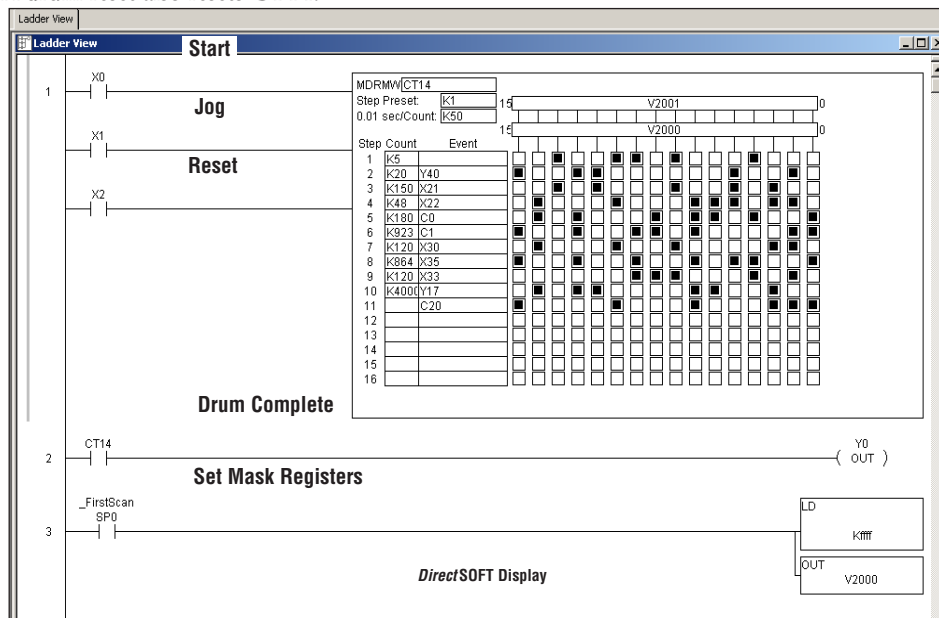
The Masked Event Drum with Word Output features 16 steps and 16 outputs. Drum outputs are logically ANDed bit-by-bit with an output mask word for each step. The Ggggg field specifies the beginning location of the 16 mask words, creating the final output (Ffff field). Step transitions occur on a timed and/or event basis. The jog input also advances the step on each off-to-on transition. Time is specified in counts per step, and events are specified as discrete contacts. Unused steps and events can be left blank (this is the default entry). Whenever the Start input is energized, the drum's timer is enabled. As long as the event is true for the current step, the timer runs during that step. When the step count equals the counts per step, the drum transitions to the next step. This process stops when the last step is complete, or when the Reset input is energized. The drum enters the preset step chosen upon a CPU program-to-run mode transition, and whenever the Reset input is energized.

Drum Parameters	Field	Data Types	Ranges
Counter Number	aaa	—	0-174 (DL250-1) 0-374 (DL260)
Preset Step	bb	K	1 – 16
Timer base	cccc	K	0 – 99.99 seconds
Counts per step	dddd	K	0 – 9999
Event	eeee	X, Y, C, S, T, CT, GX, GY, SP	see either page 3-55 or page 3-56
Word Output	Ffff	V	
Output Mask	Ggggg	V	

Drum instructions use four counters in the CPU. The ladder program can read the counter values for the drum's status. The ladder program may write a new preset step number to CTA(n+2) at any time. However, the other counters are for monitoring purposes only.

Counter Number	DL250-1 Ranges of (n)	DL260 Ranges of (n)	Function	Counter Bit Function
CTA(n)	0 - 174	0 - 374	Counts in step	CT(n) = Drum Complete
CTA(n+1)	1 - 175	1 - 375	Timer value	CT(n+1) = (not used)
CTA(n+2)	2 - 176	2 - 376	Preset Step	CT(n+2) = (not used)
CTA(n+3)	3 - 177	3 - 377	Current Step	CT(n+3) = (not used)

The following ladder program shows the MDRMW instruction in a typical ladder program, as shown by *DirectSOFT*. Steps 1 through 11 are used, and all sixteen output points are used. The output mask word is at V2000. The final drum outputs are shown above the mask word as a word at V2001. The data bits in V2000 are logically ANDed with the output pattern of the current step in the drum, generating the contents of V2001. If you want all drum outputs to be off after powerup, write zeros to V2000 on the first scan. Ladder logic may update the output mask at any time to enable or disable the drum outputs. The preset step is step 1. The timebase runs at $(K50 \times 0.01) = 0.5$ seconds per count. Therefore, the duration of step 1 is $(5 \times 0.5) = 2.5$ seconds. Note that step 1 is time-based only (event is left blank). In the last rung, the Drum Complete bit (CT14) turns on output Y0 upon completion of the last step (step 11). A drum reset also resets CT14.



NOTE: The ladder program must load constants in V2000 through V2012 to cover all mask registers for the 11 steps used in this drum.