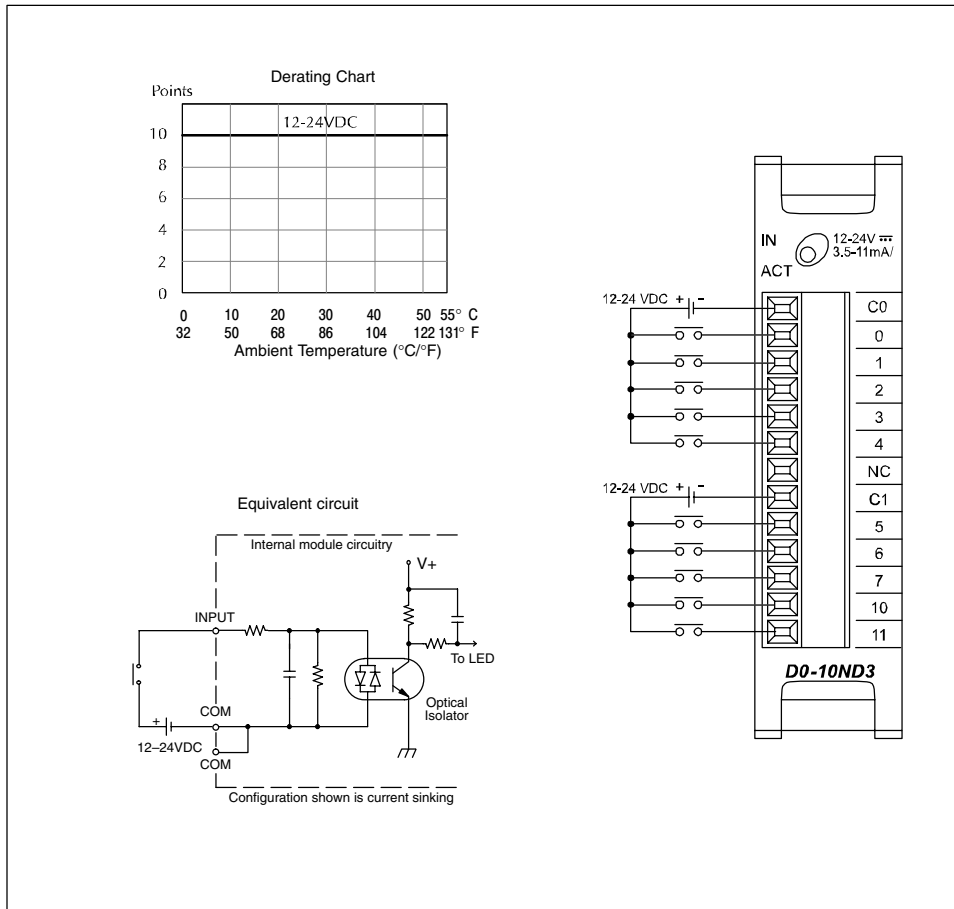


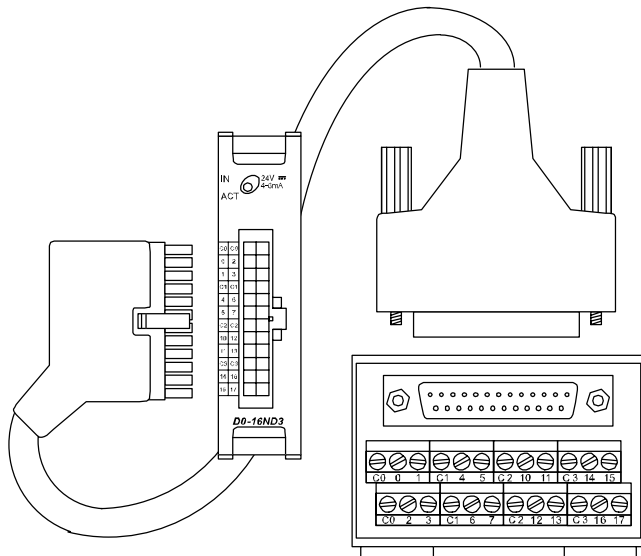
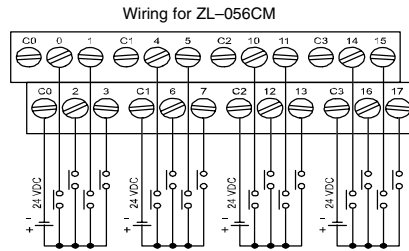
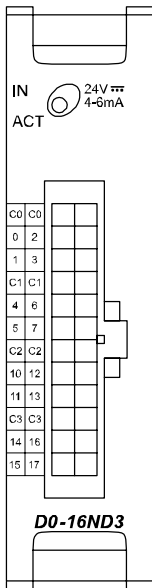
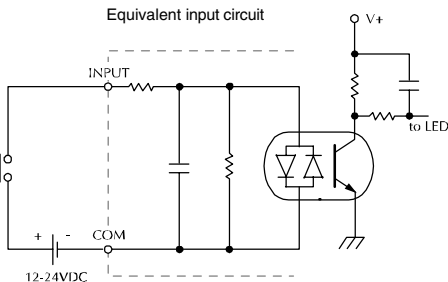
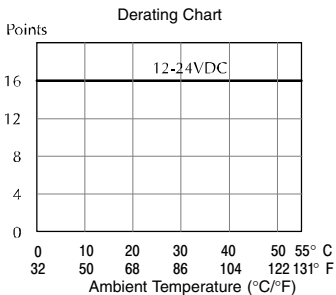
### D0-10ND3 DC Input

Inputs per module	10 (sink/source)
Input voltage range	10.8–26.4 VDC
Operating voltage range	12–24 VDC
Peak voltage	30.0 VDC
Input current	Typical: 4.0 mA @ 12 VDC 8.5 mA @ 24 VDC
Maximum input current	11 mA @ 26.4 VDC
Input impedance	2.8kΩ @ 12–24 VDC
ON voltage level	> 10.0 VDC
OFF voltage level	< 2.0 VDC
Minimum ON current	3.5 mA
Maximum OFF current	0.5 mA
OFF to ON response	2–8 ms, typical 4 ms
ON to OFF response	2–8 ms, typical 4 ms
Status indicators	Module activity: one green LED
Commons per module	2 non-isolated
Fuse	N/A
Base power required (5V)	Typical 35 mA (all pts. ON)



### D0-16ND3 DC Input

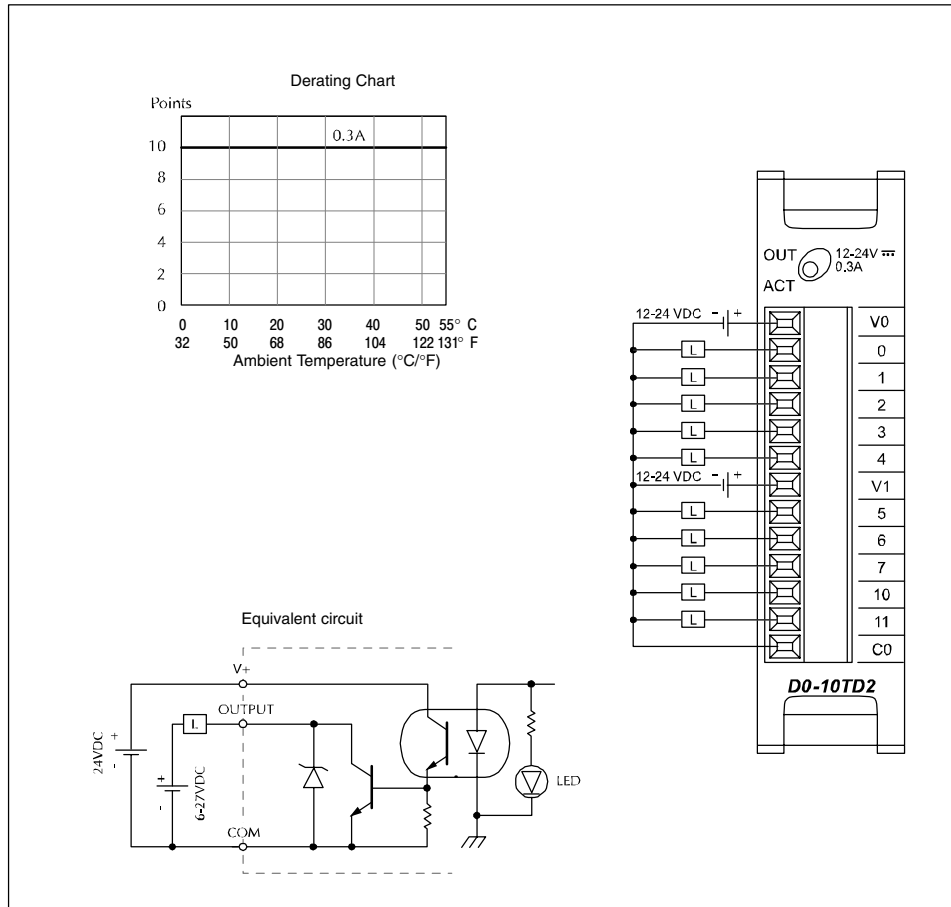
Inputs per module	16 (sink/source)
Input voltage range	20-28 VDC
Operating voltage range	24 VDC
Peak voltage	30.0 VDC
Input current	Typical: 4.0 mA @ 24 VDC
Maximum input current	6 mA @ 28 VDC
Input impedance	4.7kΩ @ 24 VDC
ON voltage level	> 19.0 VDC
OFF voltage level	< 7.0 VDC
Minimum ON current	3.5 mA
Maximum OFF current	1.5 mA
OFF to ON response	2-8 ms, typical 4 ms
ON to OFF response	2-8 ms, typical 4 ms
Status indicators	Module activity: one green LED
Commons per module	4 non-isolated
Fuse	N/A
Base power required	Typical 35 mA (all pts. ON)



Use Ziplink ZL-056CBL cable and ZL-056CM connector module or build your own cables using 24-pin Molex Micro Fit 3.0 receptacle, part number 43025, or compatible.

### D0-10TD1 DC Output

Outputs per module	10 (sinking)
Operating voltage range	6–27 VDC
Output voltage range	5–30 VDC
Peak voltage	50.0 VDC
Maximum output current	0.3 A/point, 1.5 A/common
Minimum output current	0.5 mA
Maximum leakage current	15 $\mu$ A @ 30.0 VDC
ON voltage drop	0.5 VDC @ 0.3 A
Maximum inrush current	1 A for 10 ms
OFF to ON response	< 10 $\mu$ s
ON to OFF response	< 60 $\mu$ s
Status indicators	Module activity: one green LED
Commons per module	2 non-isolated (5 points/common)
Fuse	N/A
External DC power required	20–28 VDC max. 200 mA (all pts. on)
Base power required (5V)	Max. 150 mA (all pts. ON)



## D0-16TD1 DC Output

Outputs per module	16 (sinking)
Operating voltage range	6-27 VDC
Output voltage range	5-30 VDC
Peak Voltage	50.0 VDC
Maximum output current	0.1 A/point, 0.8 A/common
Minimum output current	0.5 mA
Maximum leakage current	15 $\mu$ A @ 30.0 VDC
On voltage drop	0.5 VDC @ 0.1 A
Maximum inrush current	1 A for 10 ms
OFF to ON response	< 0.5 ms
ON to OFF response	< 0.5 ms
Status indicators	Module activity: one green LED
Commons per module	2 isolated (8 points/common)
Fuse	N/A
External DC power required	20-28 VDC max. 70 mA (all pts. on)
Base power required (5V)	Max. 200 mA (all pts. ON)

### Derating Chart

Points

0	10	20	30	40	50	55° C
32	50	68	86	104	122	131° F

Ambient Temperature (°C/°F)

**D0-16TD1**

### Wiring for ZL-056CM

6-27 VDC

24 VDC

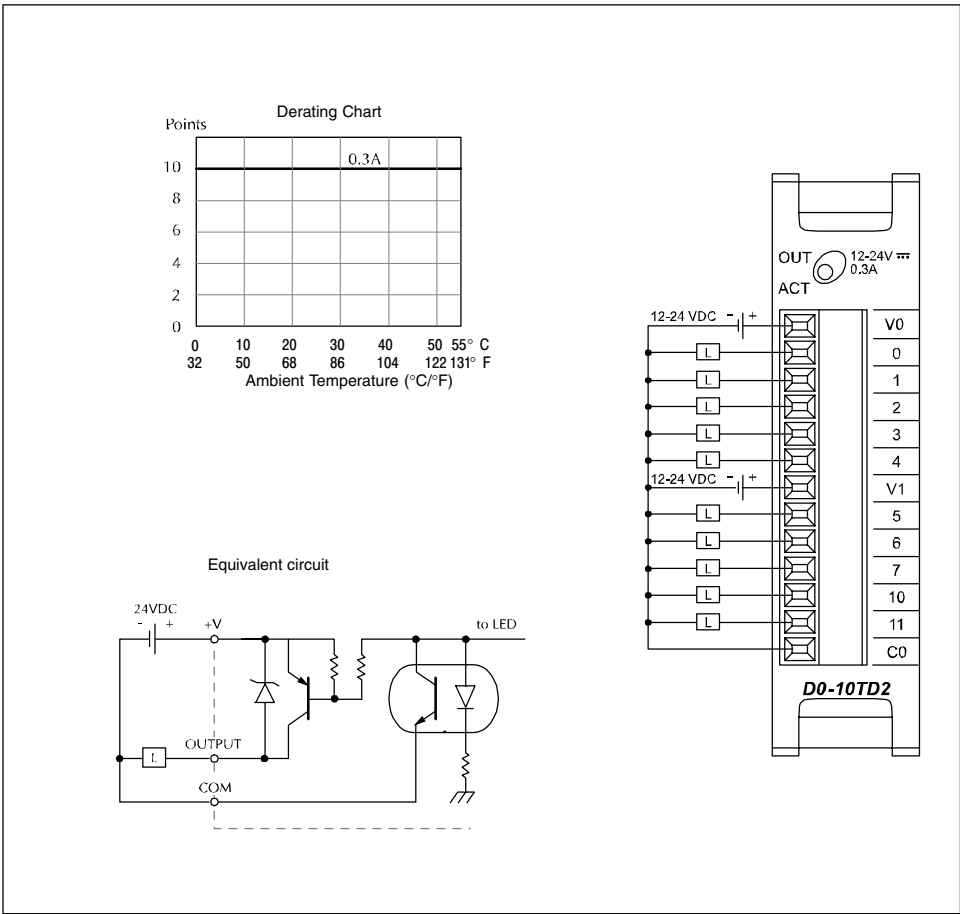
### Equivalent input circuit

**Use Ziplink ZL-056CBL cable and ZL-056CM connector module or build your own cables using 24-pin Molex Micro Fit 3.0 receptacle, part number 43025, or compatible.**

### D0-10TD2 DC Output

Outputs per module	10 (sourcing)
Operating voltage range	12-24 VDC
Output voltage range	10.8-26.4 VDC
Peak voltage	50.0 VDC
Maximum output current	0.3 A/point, 1.5 A/common
Minimum output current	0.5 mA
Maximum leakage current	1.5 $\mu$ A @ 30.0 VDC
ON voltage drop	1.0 VDC @ 0.3 A
Maximum inrush current	1 A for 10 ms
OFF to ON response	< 10 $\mu$ s
ON to OFF response	< 60 $\mu$ s
Status indicators	Module activity: one green LED
Commons per module	2 non-isolated (5 points/common)
Fuse	N/A
Base power required (5V)	Max. 150 mA (all pts. ON)

Installation, Wiring, and Specifications



## D0-16TD2 DC Output

Outputs per module	16 (sourcing)
Operating voltage range	12-24 VDC
Output voltage range	10.8-26.4 VDC
Peak Voltage	50.0 VDC
Maximum output current	0.1 A/point, 0.8 A/common
Minimum output current	0.5 mA
Maximum leakage current	1.5 $\mu$ A @ 26.4 VDC
ON voltage drop	1.0 VDC @ 0.3 A
Maximum inrush current	1 A for 10 ms
OFF to ON response	< 0.5 ms
ON to OFF response	< 0.5 ms
Status indicators	Module activity: one green LED
Commons per module	2 non-isolated (8 points/common)
Fuse	N/A
Base power required (5V)	Max. 200 mA (all pts. ON)

**Derating Chart**

Points

0	10	20	30	40	50	55° C
32	50	68	86	104	122	131° F

Ambient Temperature (°C/°F)

**D0-16TD2**

**Wiring for ZL-056CM**

**Equivalent input circuit**

**D0-16TD2**

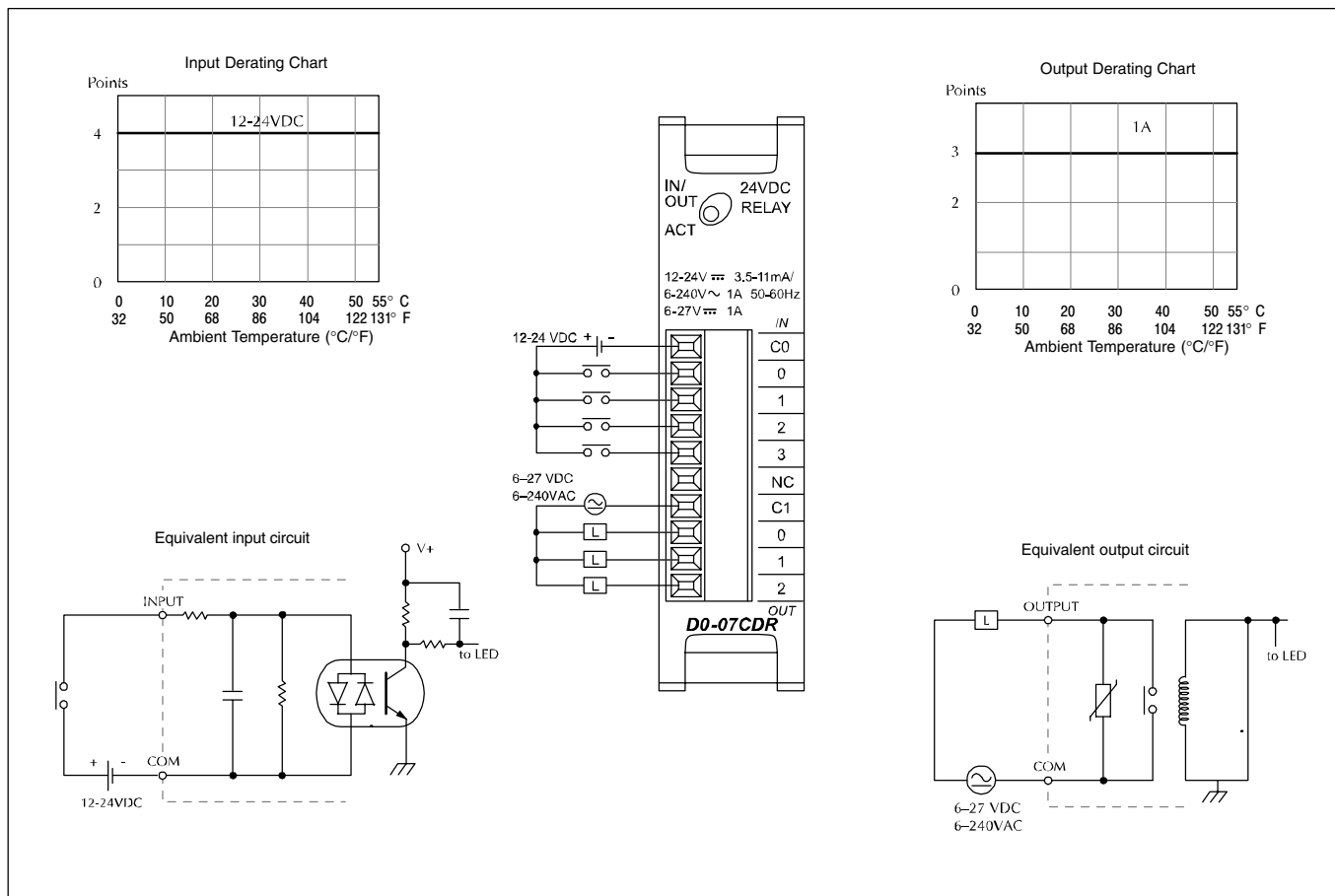
**Use Ziplink ZL-056CBL cable and ZL-056CM connector module or build your own cables using 24-pin Molex Micro Fit 3.0 receptacle, part number 43025, or compatible.**

### D0-07CDR DC Input and Output

Installation, Wiring, and Specifications

Input Specification	
Inputs per module	4 (sink/source)
Operating voltage range	12–24 VDC
Input voltage range	10.8–26.4 VDC
Peak voltage	30.0 VDC
Maximum input current	11 mA @ 26.4 VDC
Input current	Typical: 4 mA @ 12 VDC 8.5 mA @ 24 VDC
Input impedance	2.8kΩ @ 12–24 VDC
ON voltage level	> 10.0 VDC
OFF voltage level	< 2.0 VDC
Minimum ON current	3.5 mA
Maximum OFF current	0.5 mA
ON to OFF response	2–8 ms, typical 4 ms
OFF to ON response	2–8 ms, typical 4 ms
Commons	1 (4 points / common)

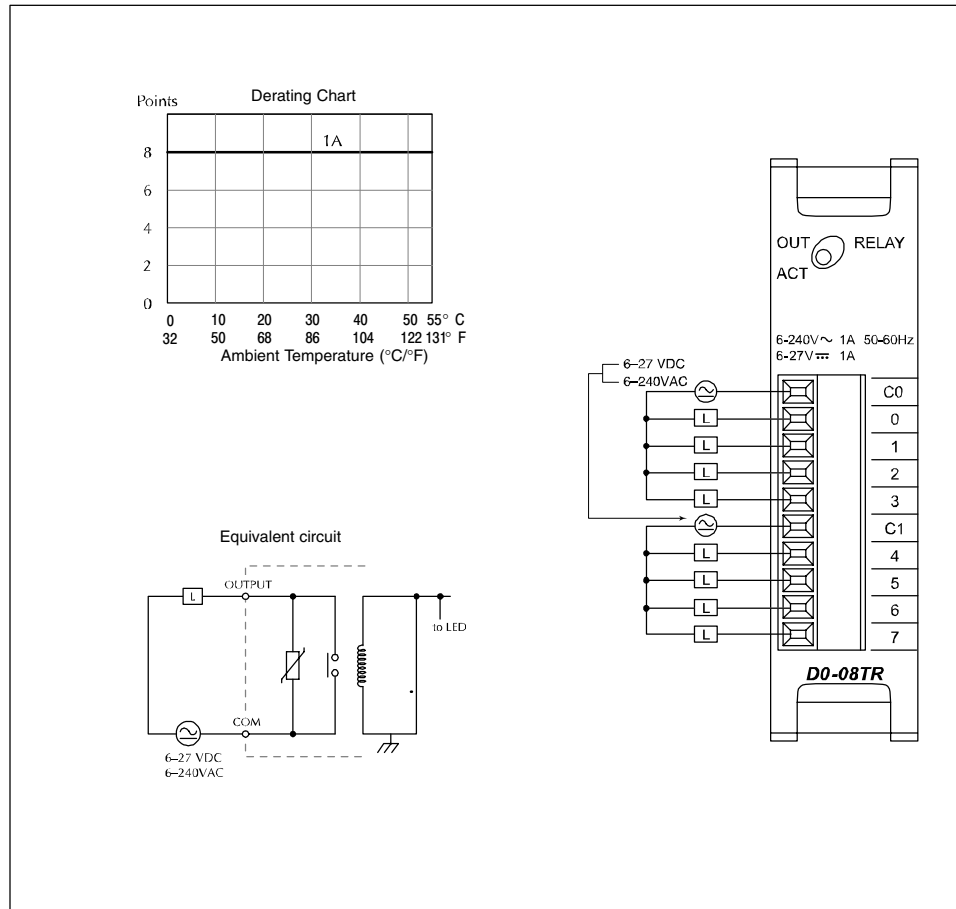
Output Specification	
Outputs per module	3
Operating voltage range	6–27 VDC / 6–240 VAC
Output type	Relay, form A, SPST
Peak voltage	30.0 VDC/264 VAC
Maximum current (resistive)	1 A/point, 4 A/common
Minimum load current	5 mA @ 5 VDC
Maximum leakage current	0.1 mA @ 264 VAC
ON voltage drop	N/A
Maximum inrush current	Output: 3 A for 10 ms Common: 10 A for 10 ms
OFF to ON response	< 15 ms
ON to OFF response	< 10 ms
Status indicators	Module activity: one green LED
Commons	1 (3 points/common)
Fuse	N/A
Base power required (5 V)	Max. 200 mA (all points ON)



## D0-08TR Relay Output

Outputs per module	8
Operating voltage range	6-27 VDC/6-240 VAC
Output type	Relay, form A, SPST
Peak voltage	30.0 VDC/264 VAC
Maximum current (resistive)	1 A/point, 4 A/common
Minimum load current	0.5 mA
Maximum leakage current	0.1 mA @ 264 VAC
ON voltage drop	N/A
Maximum inrush current	Output: 3 A for 10 ms Common: 10 A for 10 ms
OFF to ON response	< 15 ms
ON to OFF response	< 10 ms
Status indicators	Module activity: one green LED
Commons per module	2 isolated (4 points/common)
Fuse	N/A
Base power required (5 V)	Maximum 280 mA (all pts. ON)

Installation, Wiring,  
and Specifications





### D0-08CDD1 DC Input and Output

Installation, Wiring, and Specifications

Input Specification	
Inputs per module	4 (sink/source)
Operating voltage range	10.8–26.4 VDC
Input voltage range	12–24 VDC
Peak voltage	30.0 VDC
Maximum input current	11 mA @ 26.4 VDC
Input current	Typical: 4 mA @ 12 VDC 8.5 mA @ 24 VDC
Input impedance	2.8kΩ @ 12–24 VDC
ON voltage level	> 10.0 VDC
OFF voltage level	< 2.0 VDC
Minimum ON current	3.5 mA
Maximum OFF current	0.5 mA
ON to OFF response	2–8 ms, typical 4 ms
OFF to ON response	2–8 ms, typical 4 ms
Commons	2 non-isolated (2 pts./common)

Output Specification	
Outputs per module	4 (sinking)
Operating voltage range	6–27 VDC
Output voltage range	5–30 VDC
Peak voltage	50.0 VDC
Maximum output current	0.3 A/point, 1.2 A/common
Minimum output current	0.5 mA
Maximum leakage current	1.5 μA @ 30.0 VDC
ON voltage drop	0.5 VDC @ 0.3 A
Maximum inrush current	1 A for 10 ms
OFF to ON response	< 10 μs
ON to OFF response	< 60 μs
Status indicators	Module activity: one green LED
Commons	2 non-isolated (2 pts./common)
Fuse	N/A
Base power required (5 V)	Max. 200 mA (all points ON)
External DC power required (24V)	20–28 VDC, maximum 80 mA (all pts. ON)

