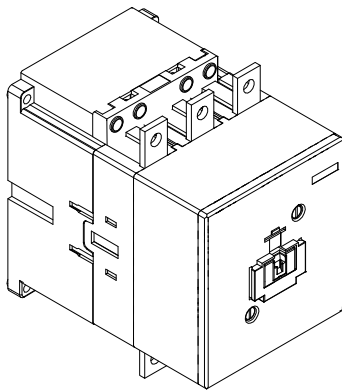
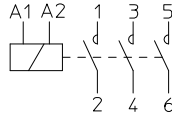


cod. 5807522



contact diagrams



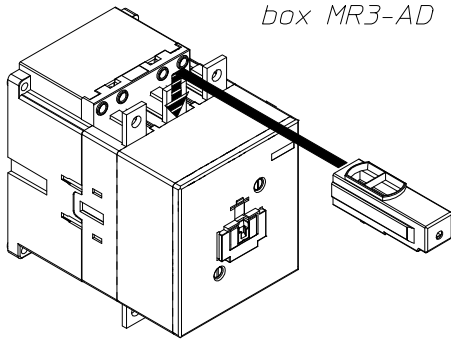
RATINGS ACCORDING TO cULus			
Contactor type		GH15NT	GH15PT
Insulation voltage	AC V	600	
General Use	A	180	180
Max. power of three-phase motors 60Hz	200V HP	40	50
	230V HP	50	60
	460V HP	100	125
Max. power of single-phase motors 60Hz	575V HP	125	150
	115V HP	15	15
Auxiliary contacts	230V HP	25	30
	Rated voltage: 600V AC Switching capacity: A600		

Ratings refer to non-reversing and reversing contactors. For reversing contactors mechanical and electrical interlocks must be used.

For starter combination use only with overload relay type RTD180

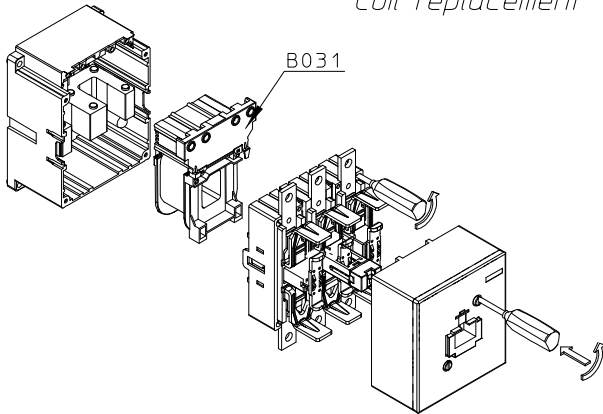
Suitable for use on a circuit capable of delivering not more than 10 kA rms sym 600 Vac max when protected
 For GH15NT: by RK5 Listed Fuses rated 300A, 600Vac
 For GH15PT: by RK5 Listed Fuses rated 350A, 600Vac
 Use fuses only

Mounting of terminals box MR3-AD (optional)



RATINGS ACCORDING TO IEC			
Contactor type		GH15NT	GH15PT
Insulation voltage	AC V	1000	
Resistive loads AC-1 cat. (open)	A	230	250
Max. power of 50-60Hz three-phase motors	230V kW	40	50
	400V kW	75	90
AC-3 category	440V kW	85	100
	500V kW	90	110
	690V kW	110	132
	1000V kW	75	90

Coil replacement



Main circuit connections Use 75°C copper wire only	Size of cable flexible or stranded	Tightening torque
	- Cables up to 250Kcmil - Bars: max width 20mm	150 lb.in
	1 x 5-4/0 AWG 2 x 5-4/0 AWG - With box terminal	150 lb.in
Auxiliary circuit connections	2 cables with same section Stranded 16-12 AWG Solid 14-12 AWG	7 lb.in Pz n.2 1 X Ø6

		<p>WARNING: Hazard of electrical shock. Installation and maintenance by qualified personnel only. Remove power before servicing. Follow the operating instructions. Protection degree IP00.</p>
--	--	--

MOUNTING

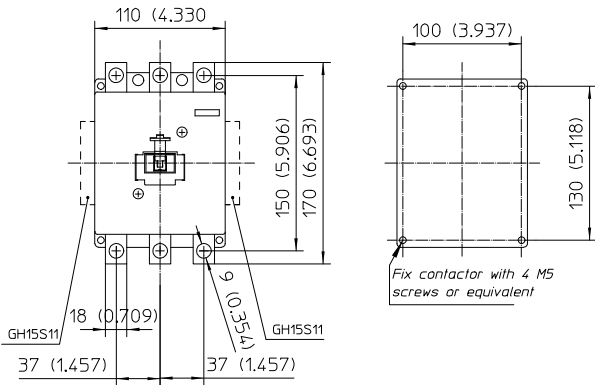
- Do not mount or remove contactor with power connected.
- Provide adequate circuit protection (fuses, circuit breakers) on the supply side of the contactor.
- Working position: in the vertical plane as shown in the drawings.
- Installation: check that closing-opening movement is free by manually actuating the contactor (POWER OFF) after installation.
- Ensure that control voltage remains within 85%-110% of rated coil voltage.
- Check that components (switches, control relays, output modules, etc.) driving the coil do not cause unsteady operations resulting in uncontrolled breaking and making operations of the contactors.
- Do not operate with power connected without the arc chute.

MAINTENANCE

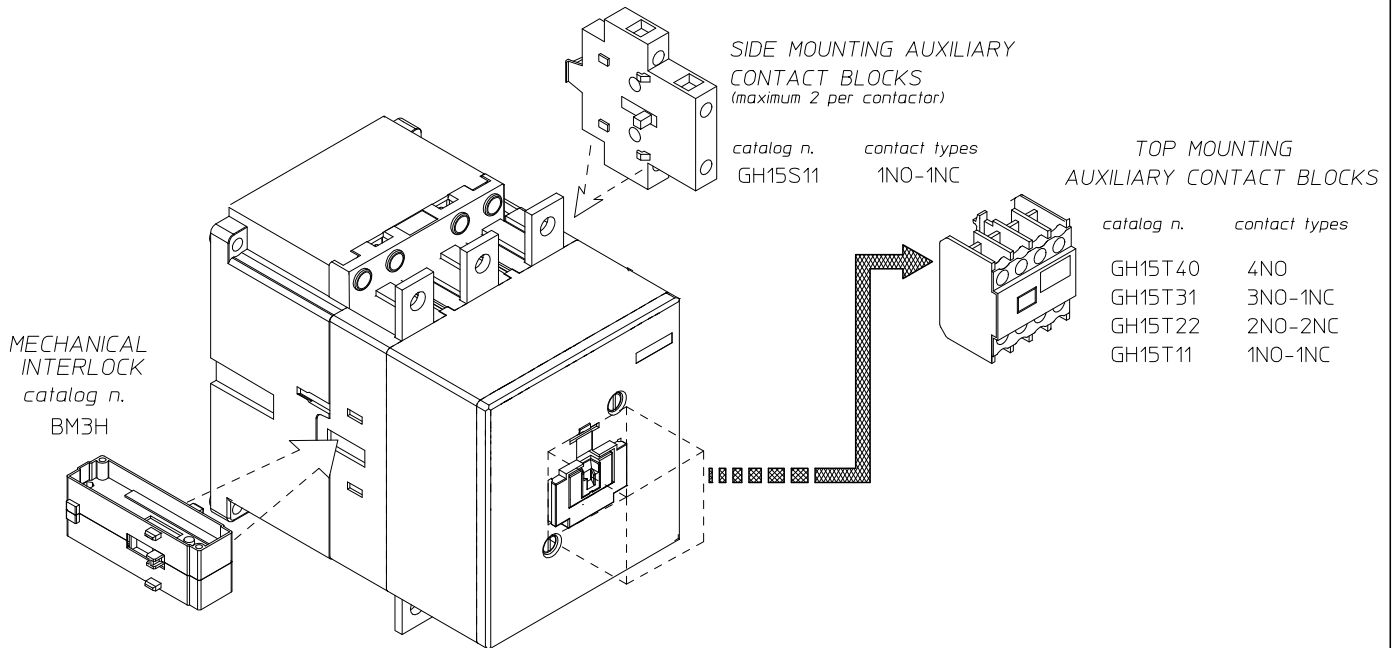
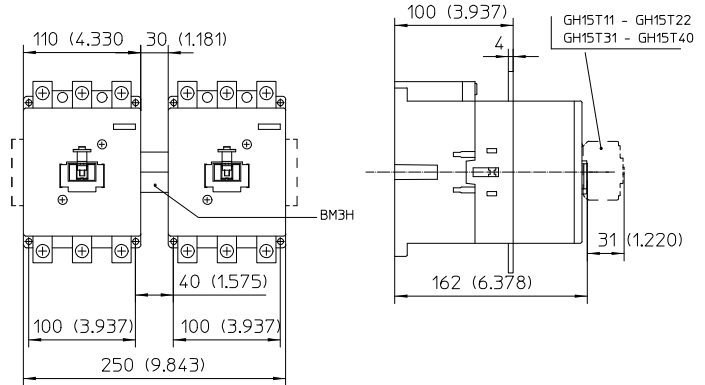
- Noise from the electromagnet indicates that debris has entered into the contactor coil area (pieces of wire, insulation, iron filings, etc.). To remove debris disconnect the contactor, disassemble it and clean the magnetic surface.
- Periodically check (frontally operating) the contacts wear and replace them if necessary.
- After a short circuit check the contacts condition. Light contact weldings can be separated by a screwdriver.

Overall and fixing dimensions

3-pole contactor



3-pole contactor with mechanical interlock



BM3H mechanical interlock assembly instructions

1. Fix a contactor to the plate
2. Fit the mechanical interlock ① on one side of the contactor, by inserting the driving pin ② into the notch of the movable part of the contactor
3. Connect the second contactor by repeating the above
4. Fix second contactor
5. Check the interlock by driving the contactors manually

