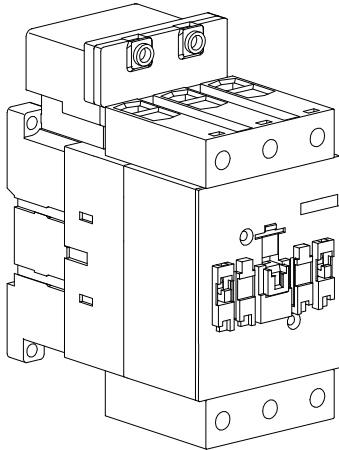
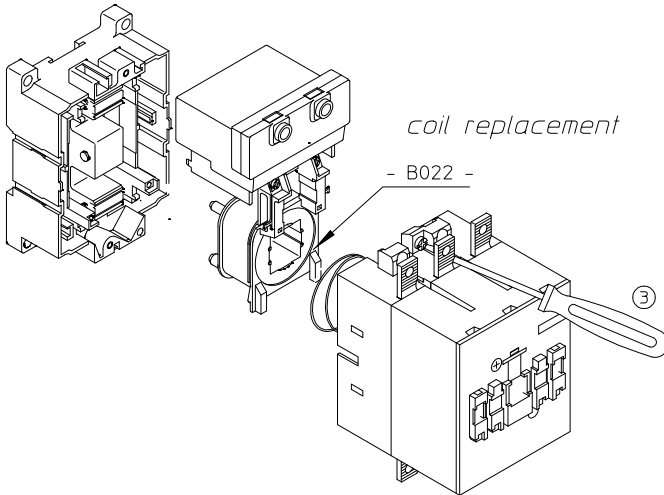
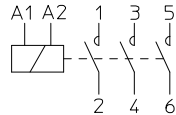


cod. 5807251



contact diagrams



coil replacement

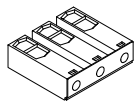
RATINGS ACCORDING TO cULus		
Contactor type		GH15MT
Insulation voltage	AC V	600
General Use	A	120
Max. power of three-phase motors 60Hz	200V HP	30
	230V HP	40
	460V HP	75
	575V HP	100
Max. power of single-phase motors 60Hz	115V HP	10
	230V HP	20
Auxiliary contacts	Rated voltage: 600V AC Switching capacity: A600	

Ratings refer to non-reversing and reversing contactors. For reversing contactors mechanical and electrical interlocks must be used.

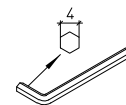
For starter combination use only with overload relay type RTD180

Suitable for use on a circuit capable of delivering not more than 10 kA rms sym 600 Vac max when protected by RK5 Listed Fuses rated 225A, 600Vac. Use fuses only

RATINGS ACCORDING TO IEC		
Contactor type		GH15MT
Insulation voltage	AC V	1000
Resistive loads AC-1 cat. (open)	A	135
Max. power of 50-60Hz three-phase motors	230V kW	30
	400V kW	55
AC-3 category	440V kW	63
	500V kW	55
	690V kW	55
	1000V kW	37



Connections	Size of cable (AWG)		Tightening torque
	Stranded	Solid	
Main circuit Use 75°C copper wire only	10-2 Max two connection	-	70 IN. LB.
Auxiliary circuit	16 - 12	14 - 12	7 IN. LB.



1 X 6mm(DN-SS5)
#2 Pozidriv (DN-SP2)



WARNING: Hazard of electrical shock. Installation and maintenance by qualified personnel only. Remove power before servicing. Follow the operating instructions. Protection degree IP10.

MOUNTING

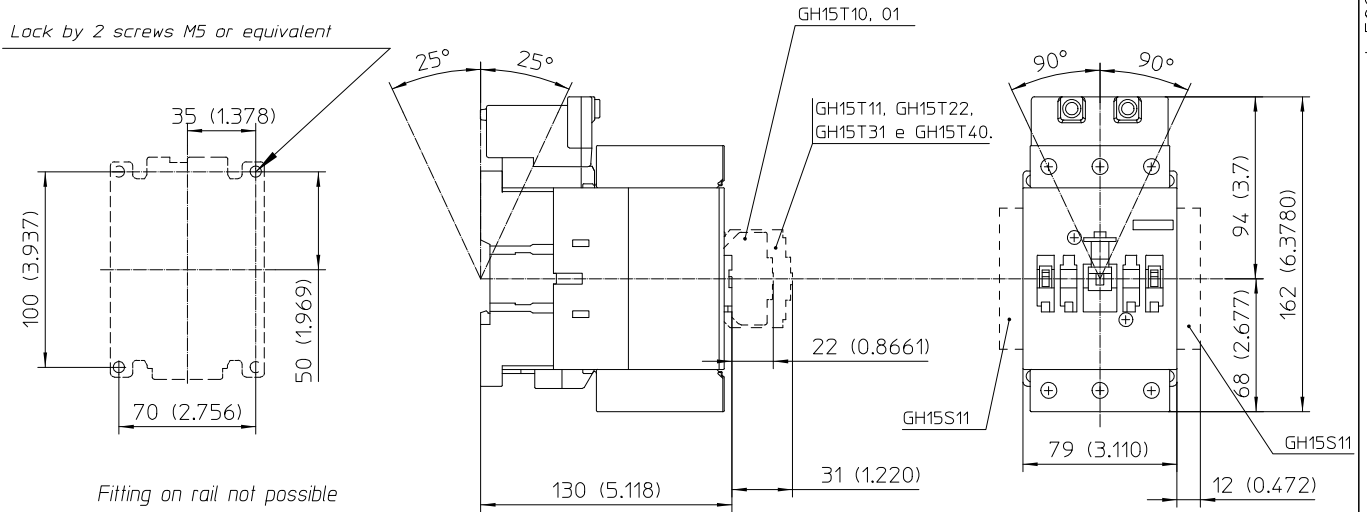
- Do not mount or remove contactor with power connected.
- Provide adequate circuit protection (fuses, circuit breakers) on the supply side of the contactor.
- Working position: in the vertical plane as shown in the drawings.
- Installation: check that closing-opening movement is free by manually actuating the contactor (POWER OFF) after installation.
- Ensure that control voltage remains within 85%-110% of rated coil voltage.
- Check that components (switches, control relays, output modules, etc.) driving the coil do, not cause unsteady operations resulting in uncontrolled breaking and making operations of the contactors.
- Do not operate with power connected without the arc chute.

MAINTENANCE

- Noise from the electromagnet indicates that debris has entered into the contactor coil area (pieces of wire, insulation, iron filings, etc.). To remove debris disconnect the contactor, disassemble it and clean the magnetic surface.
- Periodically check (frontally operating) the contacts wear and replace them if necessary.
- After a short circuit check the contacts condition. Light contact weldings can be separated by a screwdriver.

cod. 5807251

Overall and fixing dimensions



Accessories

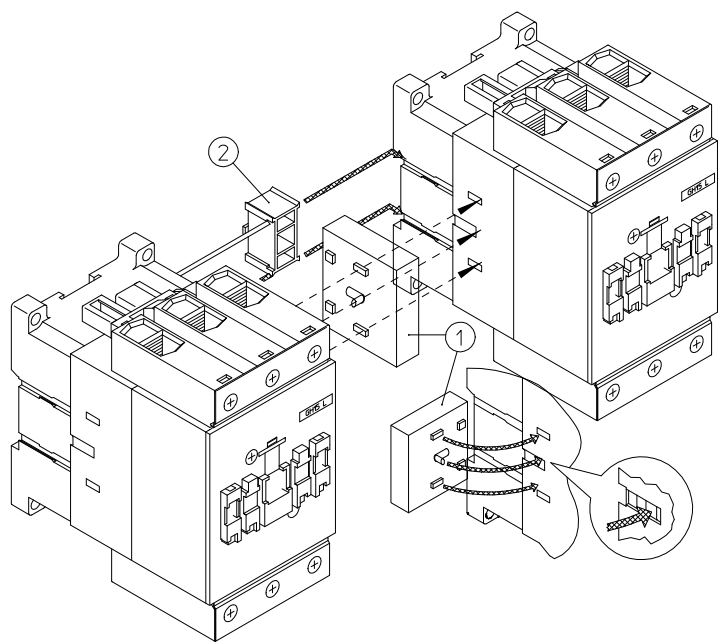
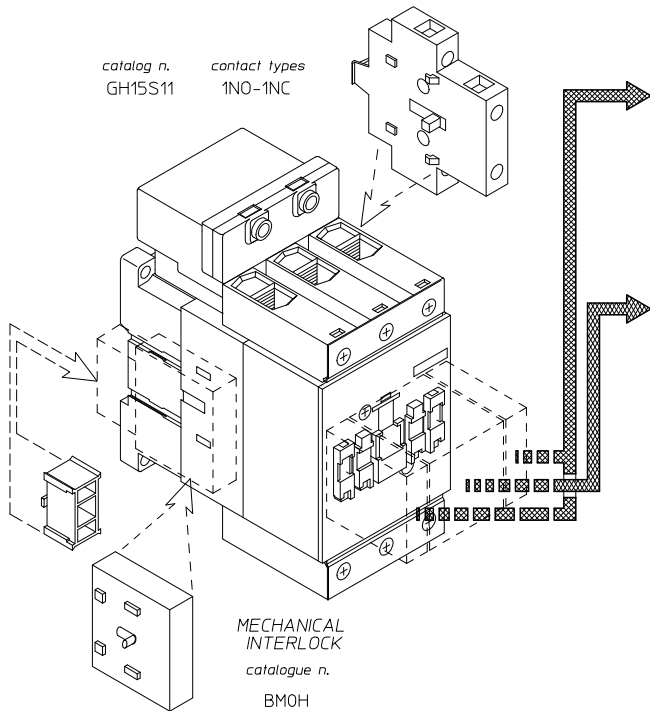
SIDE MOUNTING AUXILIARY CONTACT BLOCKS (maximum 2 per contactor)

catalog n. GH15S11
 contact types 1NO-1NC

TOP MOUNTING AUXILIARY CONTACT BLOCKS

catalog n. GH15T10, GH15T01
 contact types 1NO, 1NC

catalog n. GH15T40, GH15T31, GH15T22, GH15T11
 contact types 4NO, 3NO-1NC, 2NO-2NC, 1NO-1NC



BM0H mechanical interlock assembly instructions

1. Fit the mechanical interlock 1 on one side of the contactor, as shown, by inserting the driving pin into the notch of the movable part of the contactor
2. Connect the second contactor by repeating the above
3. Join the contactors by inserting the block 2
4. Check the interlock by driving the contactors manually