

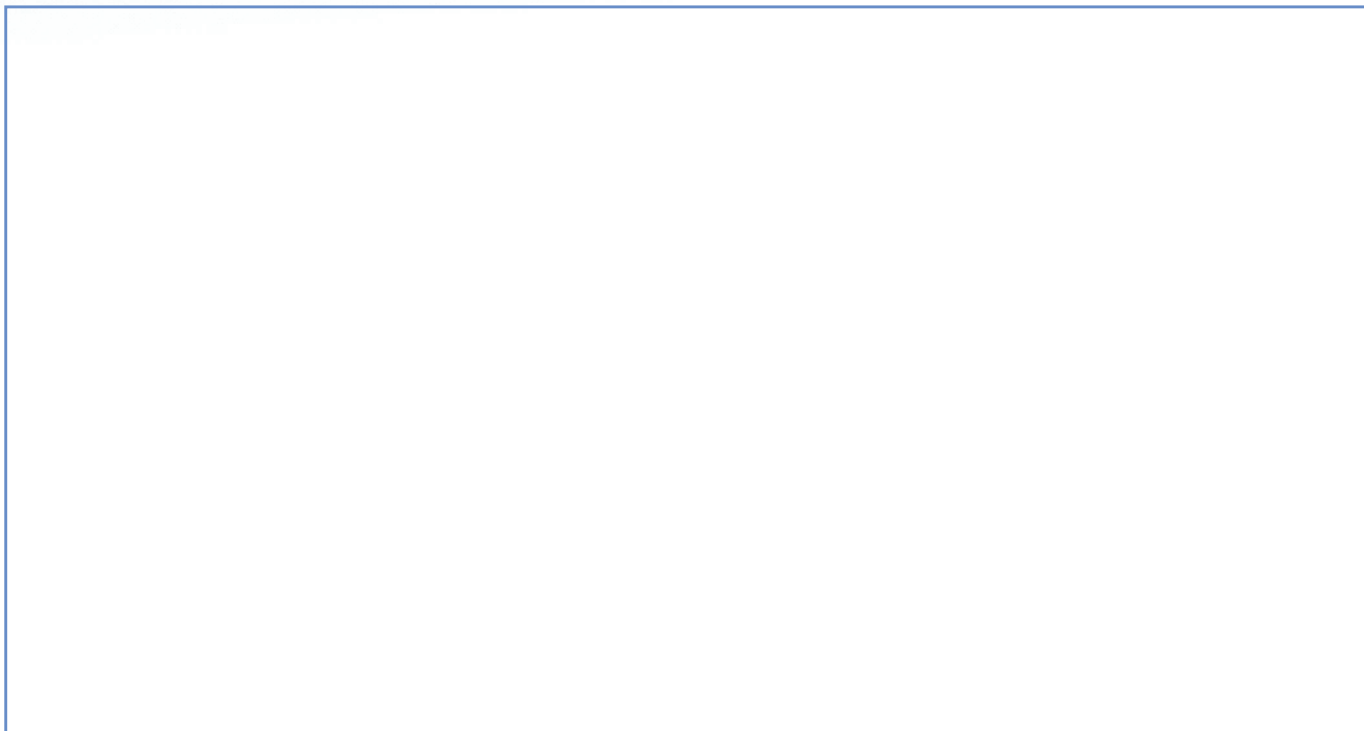
PRODUCT DESCRIPTION:

SDM_K80

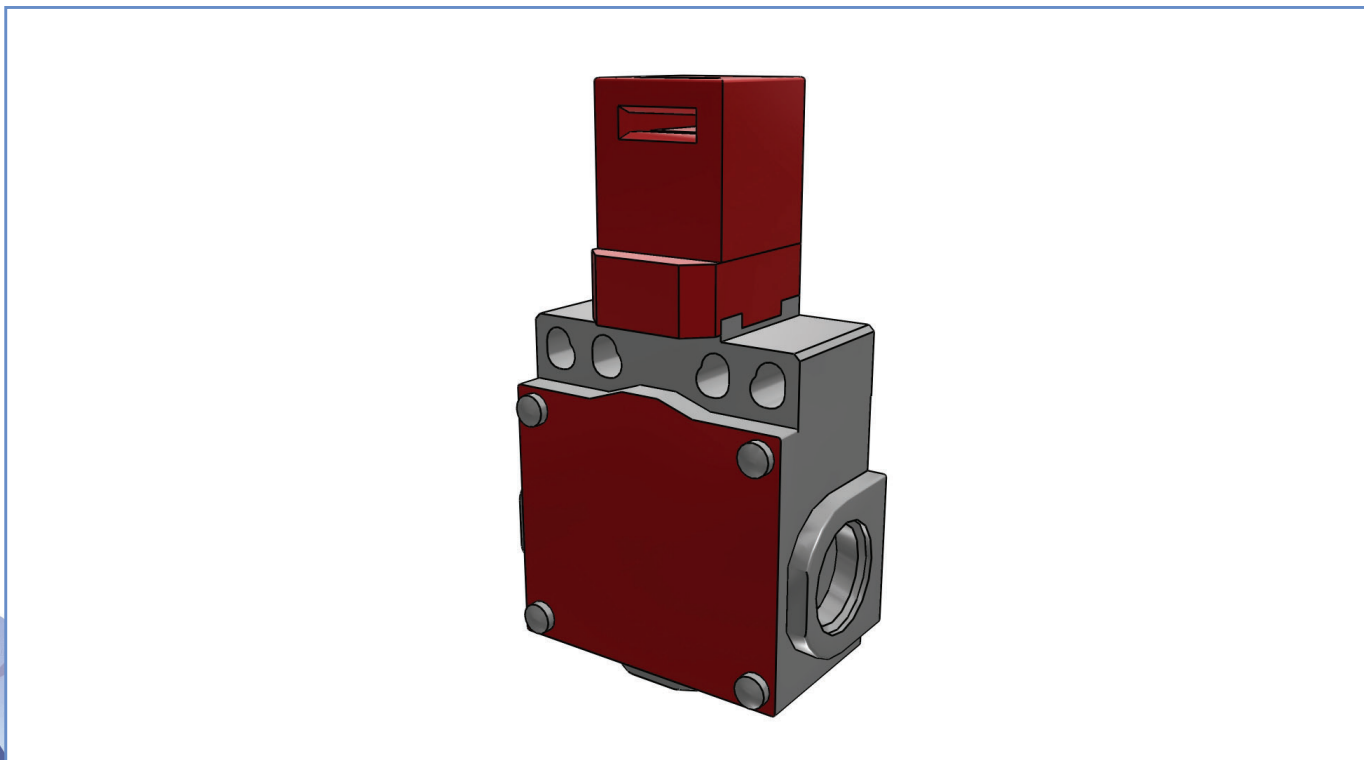
PRODUCT CODE:

SDM2K80W02

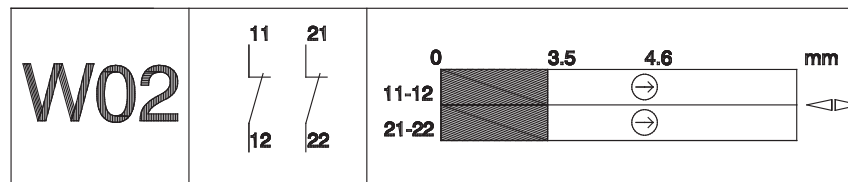
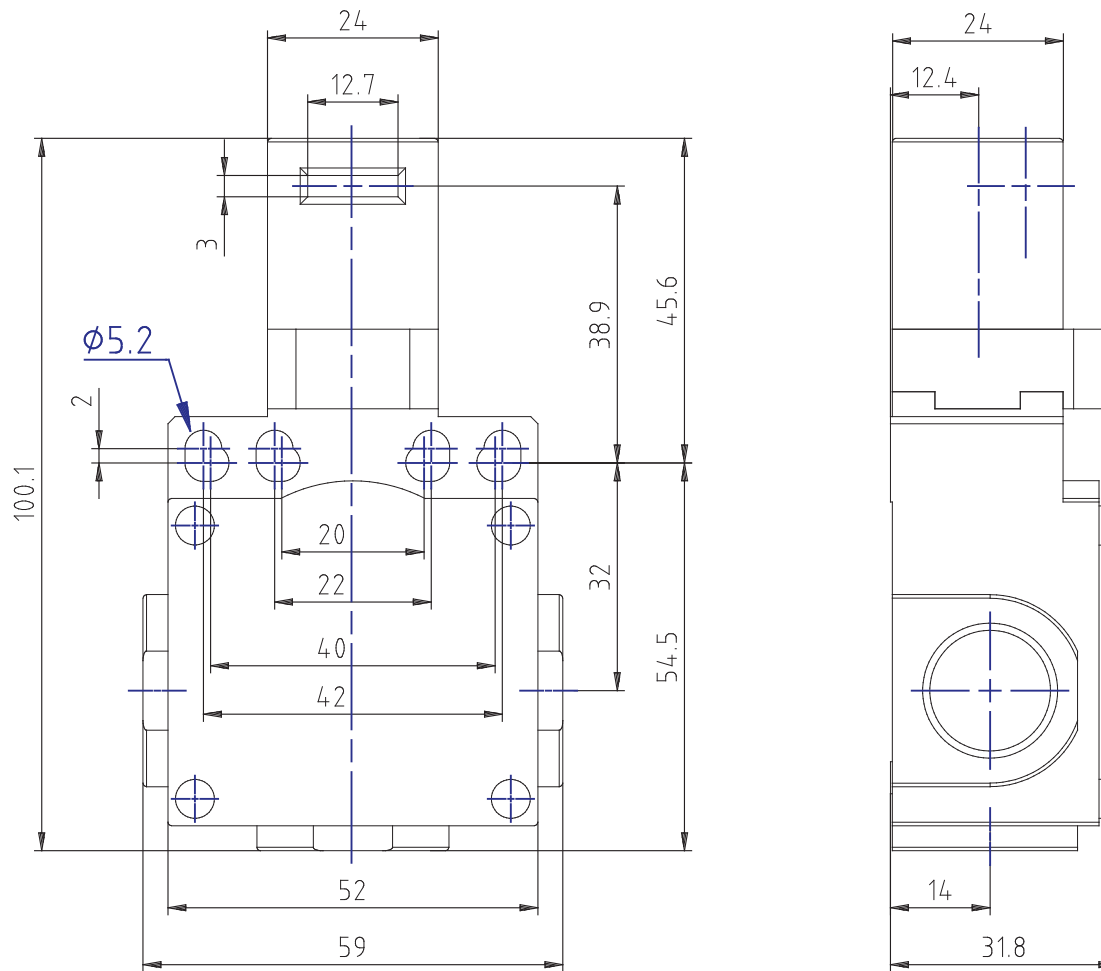
DYNAMIC 3D VIEW:



STATIC 3D VIEW:



TECHNICAL VIEW:



DETAILS:

Part Number	SDM2K80W02
Casing Material	Painted zamak
Width [mm]	50
Electrical connections	Three cable inlets for 1/2"NPT cable glands
IP Degree of Protection	IP66
Actuating Head	Fully turnable head with separated actuator
Head Material	Thermoplastic head
Microswitch	Slow action contacts (2NC)
Approvals	IMQ - cULus - CCC - EAC
Reference Directives	2014/35/UE - 2006/42/CE
Reference Standards	IEC 60947-5-1 / EN 60947-5-1 / EN ISO 14119
Interlock type according to EN ISO 14119	Type 2
Encoding level according to EN ISO 14119	Low
Operating Temperatures [°C]	-25°C ... +70°C
Stock Temperatures [°C]	-30°C ... +80°C
Protection against electric shocks (according to IEC 60536) [Class]	Class I
Rated Insulating Voltage Ui [V]	500
Pollution Degree	3
Contact rating secondo UL50	A300 - Q300
Rated Impulsive Voltage Uimp [kV]	6
Conventional thermal current in air free Ith (θ min 40 ° C) [A]	10
Short circuit protection (EU min 500Vac - fuses type gG (gl)) [A]	10
Operating currents Ie - AC-15 (50-60 Hz) according to IEC 60947-5-1	24V - 10A / 120V - 6A / 400V - 4A
DC-13 operating currents according to IEC 60947-5-1	24V - 6A / 125V - 0.55A / 250V - 0.4A
Switching Frequency [cycles/hour]	3600
Resistance Between Contacts [mΩ]	25
Connecting Terminals	M3.5 screw with cable clamp (+,-) pozidriv 2
Connecting Cables Dimensions [mm ²]	0.75 ... 2.5
Protective Conductor Terminal	M3.5 screw with cable clamp (+,-) pozidriv 2
Marking Terminals	According to IEC 60947-5-1

PRODUCT DRAWING RELEASE:

Datasheet creation date: 23/01/2023 14:05

Last Modification (geometry): 14/08/2020 05:58


 tel. +39 039 9906408
 +39 039 9903468
 fax +39 039 9906203

 Via Novarino 9/L
 23899 Robbiate (LC)
 ITALY

 www.comepi.it
 comepi@comepi.it
 tecnico@comepi.it

DETAILS:

Mechanical Durability [Millions of Operations]	1
B10d [Millions of Operations]	2

PRODUCT DRAWING RELEASE:

Datasheet creation date: 23/01/2023 14:05

Last Modification (geometry): 14/08/2020 05:58

tel. +39 039 9906408
+39 039 9903468
fax +39 039 9906203Via Novarino 9/L
23899 Robbiate (LC)
ITALYwww.comepi.it
comepi@comepi.it
tecnico@comepi.it