

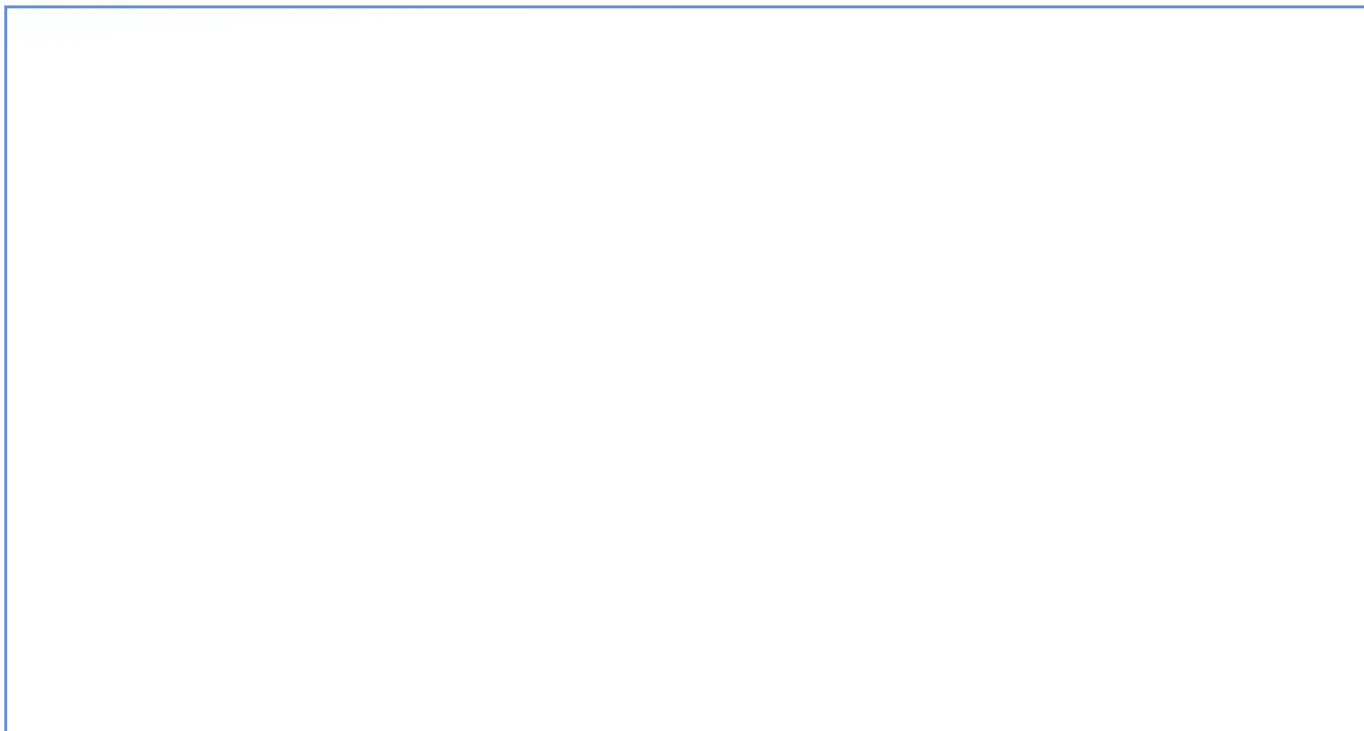
PRODUCT DESCRIPTION:

SBM_K9900

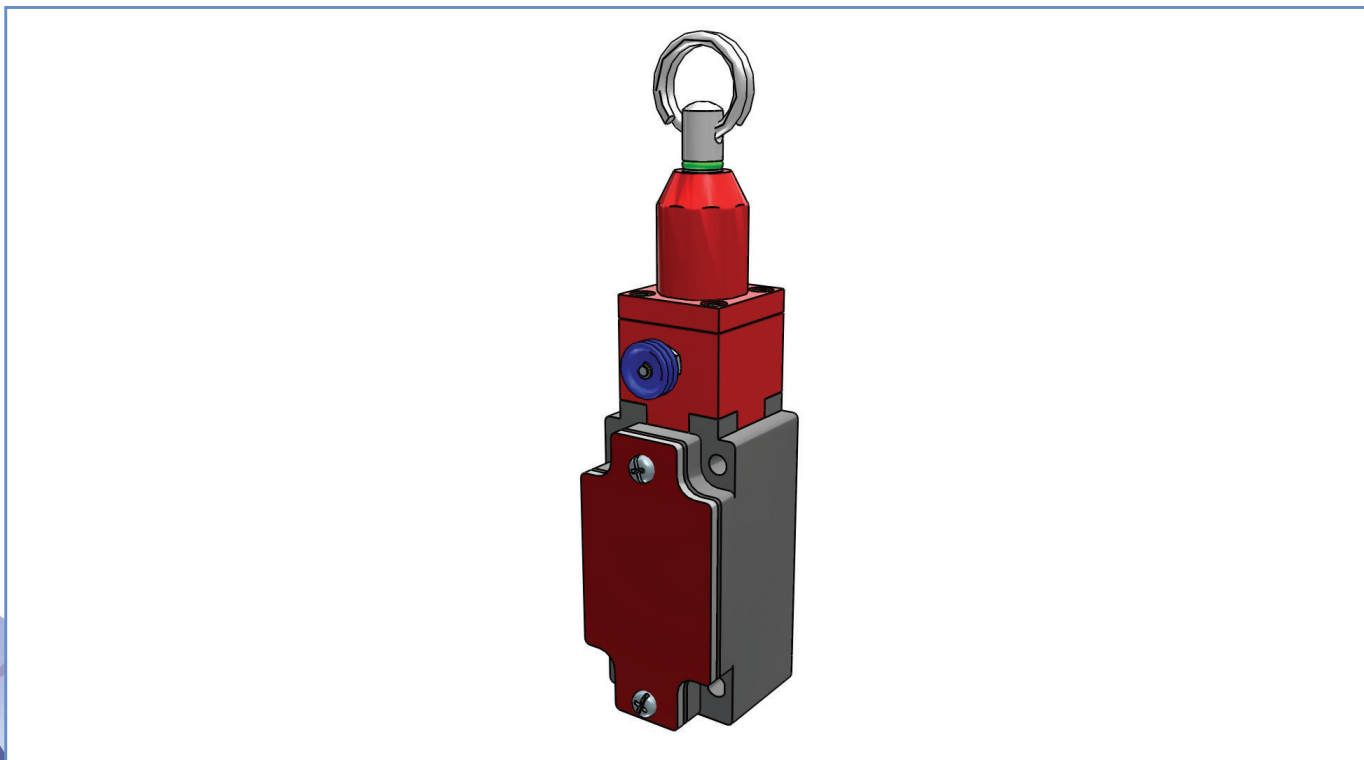
PRODUCT CODE:

SBM2K9900X12

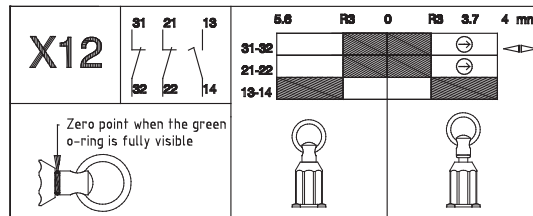
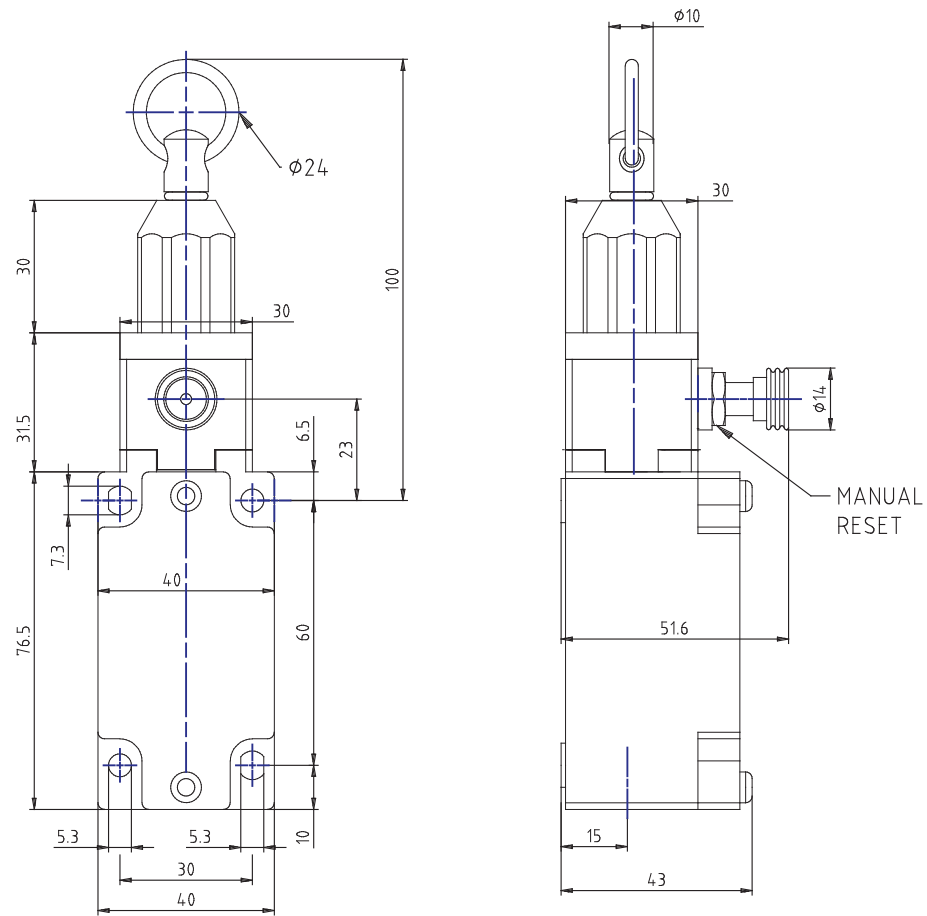
DYNAMIC 3D VIEW:



STATIC 3D VIEW:



TECHNICAL VIEW:



DETAILS:

| | |
|---|--|
| Part Number | SBM2K9900X12 |
| Casing Material | Painted aluminium |
| Width [mm] | 40 |
| Electrical connections | One cable inlet for 1/2"NPT cable gland |
| IP Degree of Protection | IP66 |
| Actuating Head | Axial rope with reset for emergency stop |
| Head Material | Thermoplastic head |
| Microswitch | Non-overlapping slow action contacts (1NO + 2NC) |
| Approvals | IMQ - cULus - CCC - EAC |
| Reference Directives | 2014/35/UE - 2006/42/CE |
| Reference Standards | IEC 60947-5-1 / EN 60947-5-1 / IEC 60947-5-5 / EN 60947-5-5 |
| Interlock type according to EN ISO 14119 | / |
| Encoding level according to EN ISO 14119 | / |
| Operating Temperatures [°C] | -25°C ... +70°C |
| Stock Temperatures [°C] | -30°C ... +80°C |
| Protection against electric shocks (according to IEC 60536) [Class] | Class I |
| Rated Insulating Voltage Ui [V] | 500 |
| Pollution Degree | 3 |
| Contact rating secondo UL50 | A600 - Q600 |
| Rated Impulsive Voltage Uimp [kV] | 6 |
| Conventional thermal current in air free Ith (θ min 40 ° C) [A] | 10 |
| Short circuit protection (EU min 500Vac - fuses type gG (gl)) [A] | 10 |
| Operating currents Ie - AC-15 (50-60 Hz) according to IEC 60947-5-1 | 24V - 10A / 400V - 1.8A |
| DC-13 operating currents according to IEC 60947-5-1 | 24V - 2.8A / 125V - 0.55A / 250V - 0.27A |
| Switching Frequency [cycles/hour] | 3600 |
| Resistance Between Contacts [mΩ] | 25 |
| Connecting Terminals | M3 screw with cable clamp (+,-) pozidriv 2 |

PRODUCT DRAWING RELEASE:

Datasheet creation date: 23/01/2023 11:55

Last Modification (geometry): 14/08/2020 05:52



DETAILS:

| | |
|---|--|
| Connecting Cables Dimensions [mm ²] | 0.34 ... 1.5 |
| Protective Conductor Terminal | M3.5 screw with cable clamp (+,-) pozidriv 2 |
| Marking Terminals | According to IEC 60947-5-1 |
| Mechanical Durability [Millions of Operations] | 0.5 |
| B10d [Millions of Operations] | 1 |

PRODUCT DRAWING RELEASE:

Datasheet creation date: 23/01/2023 11:55

Last Modification (geometry): 14/08/2020 05:52

tel. +39 039 9906408
+39 039 9903468
fax +39 039 9906203Via Novarino 9/L
23899 Robbiate (LC)
ITALYwww.comepi.it
comepi@comepi.it
tecnico@comepi.it