

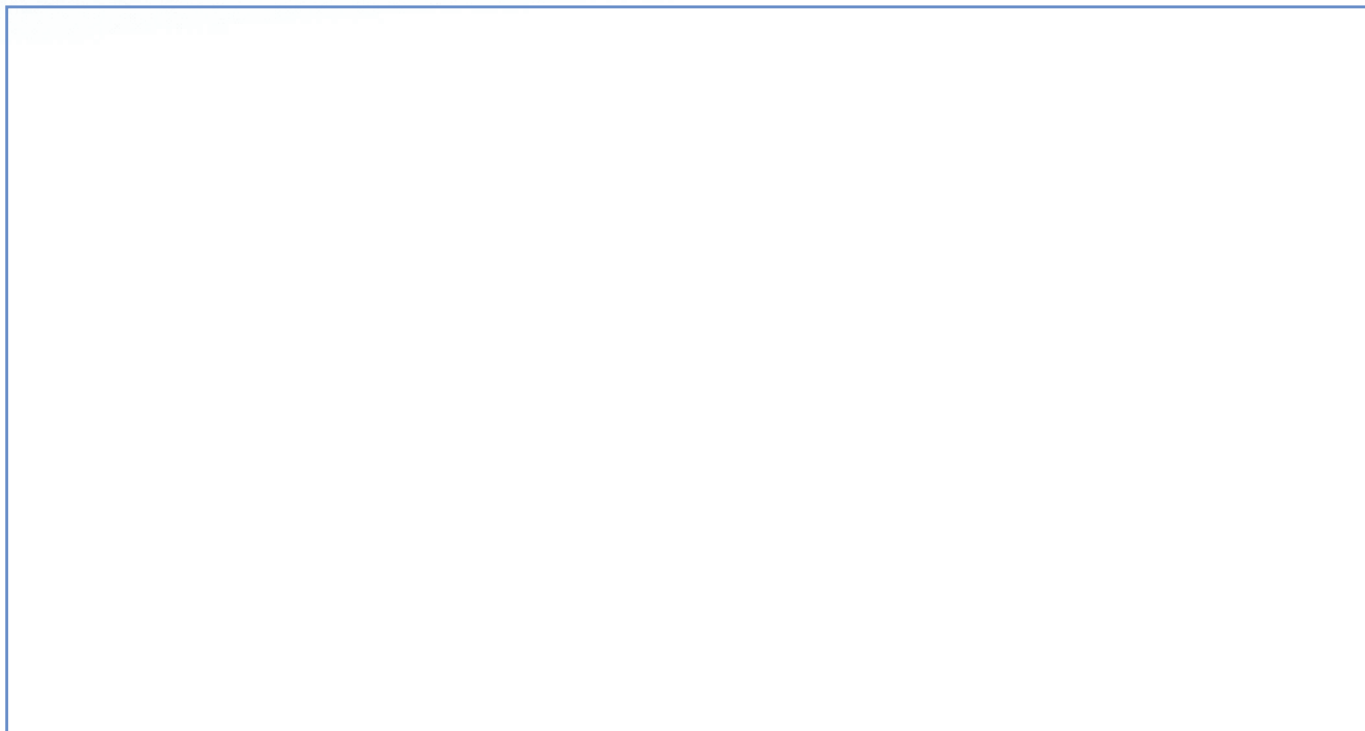
**PRODUCT DESCRIPTION:**

**SBM\_K9900**

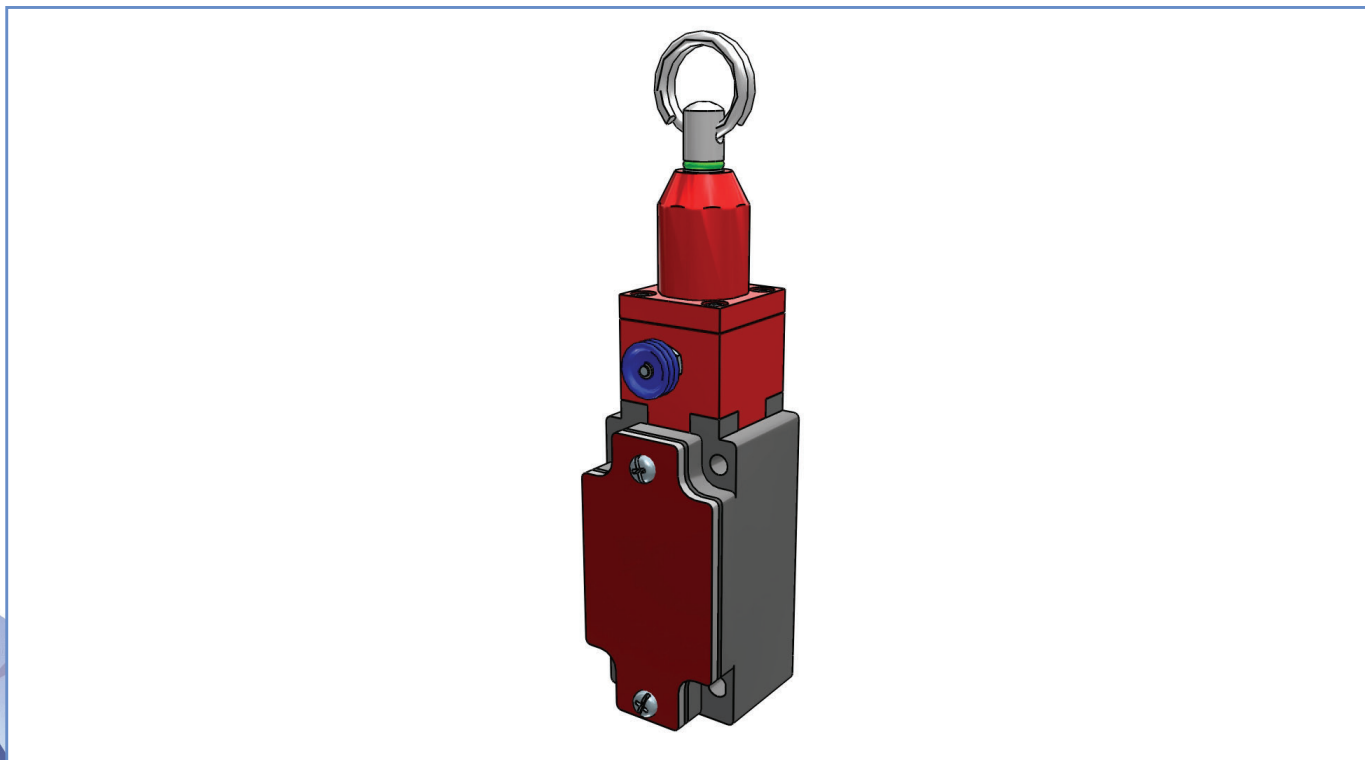
**PRODUCT CODE:**

**SBM2K9900W03**

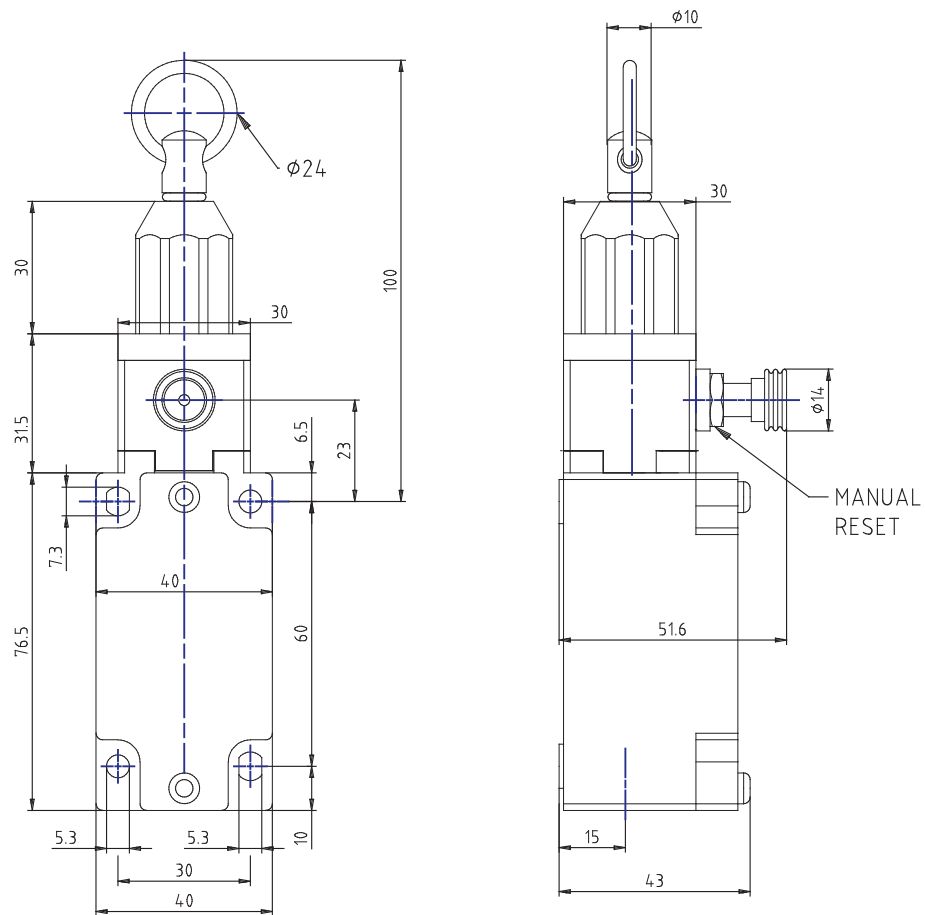
**DYNAMIC 3D VIEW:**

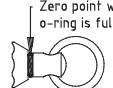
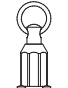
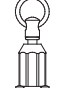


**STATIC 3D VIEW:**



TECHNICAL VIEW:



<b>W03</b>	11	21	31	5.6	RS	0	RS	3.7	4 mm
	11-12	21-22	31-32				+	-	←
	12	22	32				-	+	
 <p>Zero point when the green o-ring is fully visible</p>									

## DETAILS:

Part Number	<b>SBM2K9900W03</b>
Casing Material	<b>Painted aluminium</b>
Width [mm]	<b>40</b>
Electrical connections	<b>One cable inlet for 1/2"NPT cable gland</b>
IP Degree of Protection	<b>IP66</b>
Actuating Head	<b>Axial rope with reset for emergency stop</b>
Head Material	<b>Thermoplastic head</b>
Microswitch	<b>Non-overlapping slow action contacts ( 3NC )</b>
Approvals	<b>IMQ - cULus - CCC - EAC</b>
Reference Directives	<b>2014/35/UE - 2006/42/CE</b>
Reference Standards	<b>IEC 60947-5-1 / EN 60947-5-1 / IEC 60947-5-5 / EN 60947-5-5</b>
Interlock type according to EN ISO 14119	/
Encoding level according to EN ISO 14119	/
Operating Temperatures [°C]	<b>-25°C ... +70°C</b>
Stock Temperatures [°C]	<b>-30°C ... +80°C</b>
Protection against electric shocks (according to IEC 60536) [Class]	<b>Class I</b>
Rated Insulating Voltage Ui [V]	<b>500</b>
Pollution Degree	<b>3</b>
Contact rating secondo UL50	<b>A600 - Q600</b>
Rated Impulsive Voltage Uimp [kV]	<b>6</b>
Conventional thermal current in air free Ith (θ min 40 ° C) [A]	<b>10</b>
Short circuit protection (EU min 500Vac - fuses type gG (gl)) [A]	<b>10</b>
Operating currents Ie - AC-15 (50-60 Hz) according to IEC 60947-5-1	<b>24V - 10A / 400V - 1.8A</b>
DC-13 operating currents according to IEC 60947-5-1	<b>24V - 2.8A / 125V - 0.55A / 250V - 0.27A</b>
Switching Frequency [cycles/hour]	<b>3600</b>
Resistance Between Contacts [mΩ]	<b>25</b>
Connecting Terminals	<b>M3 screw with cable clamp (+,-) pozidriv 2</b>
Connecting Cables Dimensions [mm²]	<b>0.34 ... 1.5</b>

### PRODUCT DRAWING RELEASE:

Datasheet creation date: 23/01/2023 11:54

Last Modification (geometry): 14/08/2020 05:52



**DETAILS:**

Protective Conductor Terminal	M3.5 screw with cable clamp (+,-) pozidriv 2
Marking Terminals	According to IEC 60947-5-1
Mechanical Durability [Millions of Operations]	0.5
B10d [Millions of Operations]	1

**PRODUCT DRAWING RELEASE:**

Datasheet creation date: 23/01/2023 11:54

Last Modification (geometry): 14/08/2020 05:52

tel. +39 039 9906408  
+39 039 9903468  
fax +39 039 9906203Via Novarino 9/L  
23899 Robbiate (LC)  
ITALYwww.comepi.it  
comepi@comepi.it  
tecnico@comepi.it