

ACCESSORIES



CHAPTER

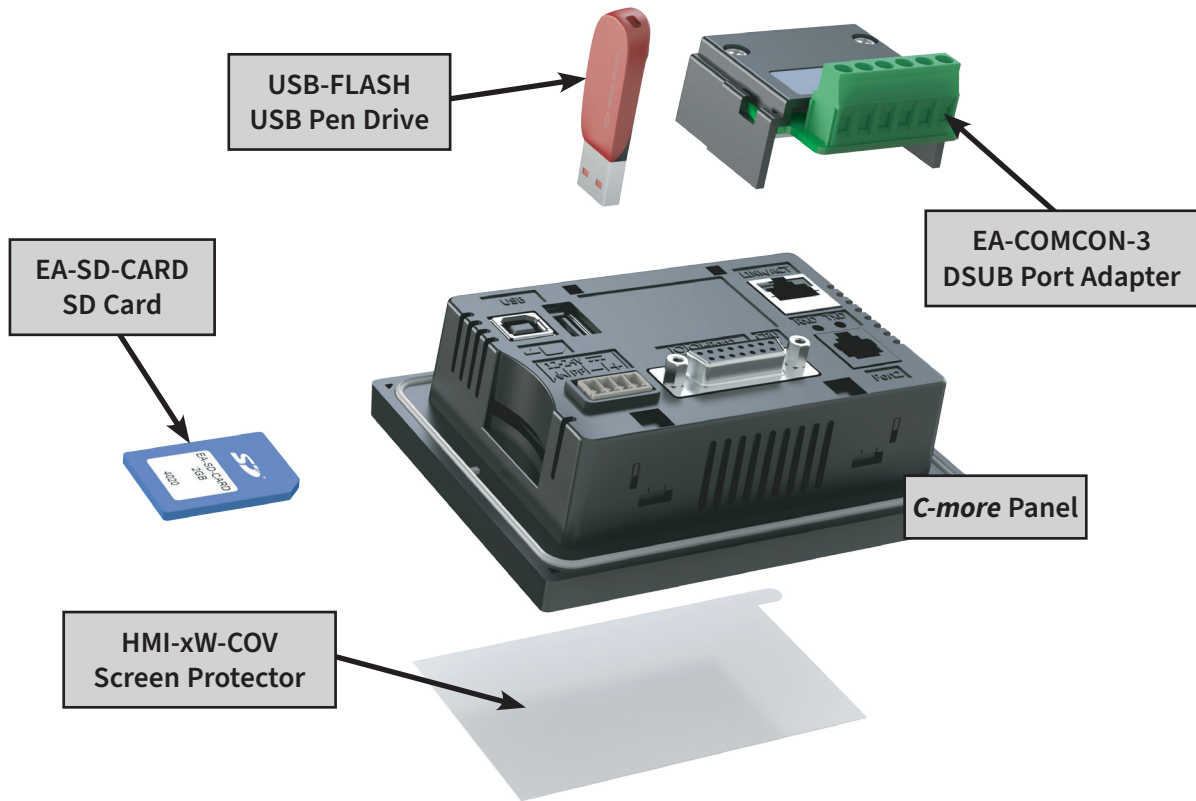
3

CONTENTS OF THIS CHAPTER

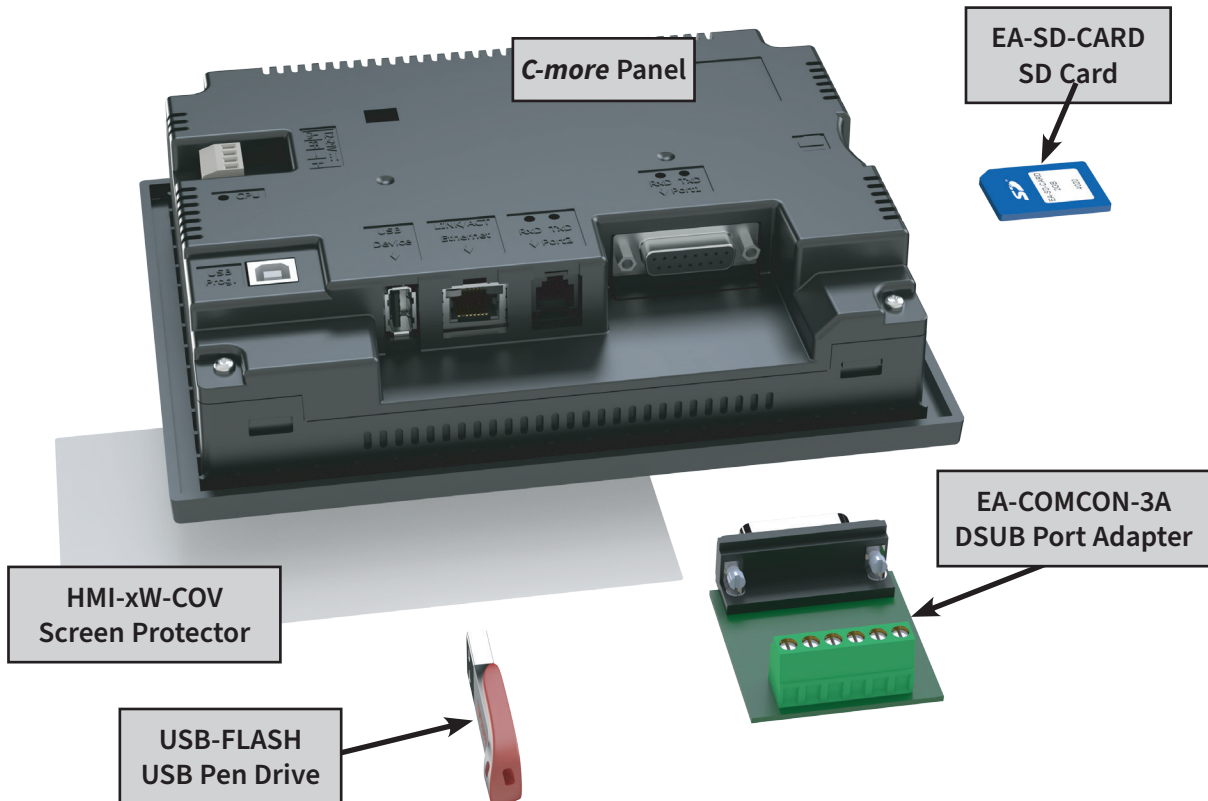
<i>Accessories Overview</i>	<i>.3-2</i>
<i>Non-glare Screen Covers</i>	<i>.3-4</i>
<i>Clear Screen Overlay Installation</i>	<i>3-5</i>
<i>SD Cards</i>	<i>.3-6</i>
<i>USB Flash Drive</i>	<i>.3-6</i>
<i>D-SUB 15-pin to Terminal Block Adapters.</i>	<i>.3-7</i>

ACCESSORIES OVERVIEW

CM5-T4W



CM5-T7W, CM5-T10W, CM5-T12W, CM5-T15W, CM5-T22W

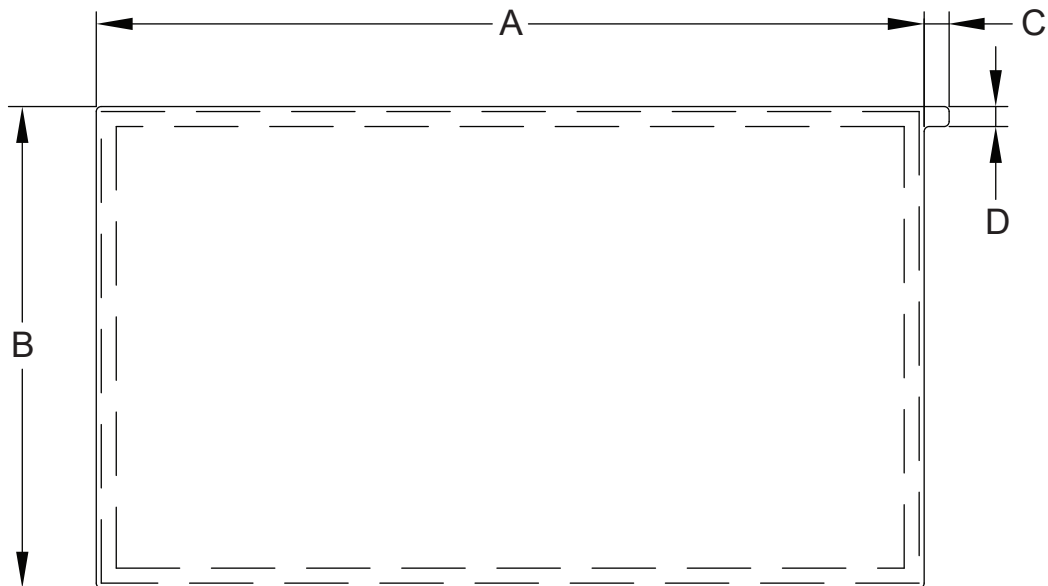
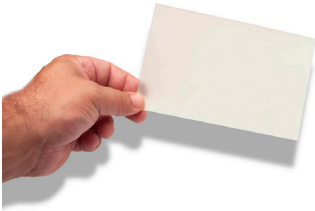


Part Number	Description
<u>HMI-4W-COV</u>	C-more screen protector, non-glare, 4.3in. Package of 3. For use with C-more 4in widescreen HMIs.
<u>HMI-7W-COV</u>	C-more screen protector, non-glare, 7in. Package of 3. For use with C-more 7in widescreen HMIs.
<u>HMI-10W-COV</u>	C-more screen protector, non-glare, 10.1in. Package of 3. For use with C-more 10in widescreen HMIs.
<u>HMI-12W-COV</u>	C-more screen protector, non-glare, 12.1in. Package of 3. For use with C-more CM5-T12W widescreen HMIs.
<u>HMI-15W-COV</u>	C-more screen protector, non-glare, 15.6in. Package of 3. For use with C-more CM5-T15W widescreen HMIs.
<u>HMI-22W-COV</u>	C-more screen protector, non-glare, 21.5in. Package of 3. For use with C-more CM5-T22W widescreen HMIs.
<u>EA-SD-CARD</u>	C-more industrial memory card, 2GB SD. For use with all products with SD memory card slot.
<u>MSD-SLC16G</u>	CLICK industrial memory card, 16GB microSD. For use with all products with microSD memory card slot.
<u>USB-FLASH</u>	SanDisk USB Flash drive, 32GB.
<u>EA-COMCON-3</u>	C-more DSUB port adapter, 15-pin male to 6-pole RS-422/485 terminal block, right angle cable entry. For use with C-more Micro EA1 series 4in and 6in HMIs, C-more Micro EA3 series 3in, 4in, and 6in HMIs, C-more EA9 6in and 7in HMIs.
<u>EA-COMCON-3A</u>	C-more Micro DSUB port adapter, 15-pin male to 6-pole RS-422/485 terminal block, straight cable entry. For use with C-more Micro EA1 series 3in with EA1-MG-SP1, C-more Micro EA3 series 8in and 10in HMIs, C-more EA9 8in, 10in, 12in and 15in HMIs.

NON-GLARE SCREEN COVERS

Non-glare PET screen covers are protective overlays used to protect the touch screen and help reduce glare from external light sources. (pk of 3)

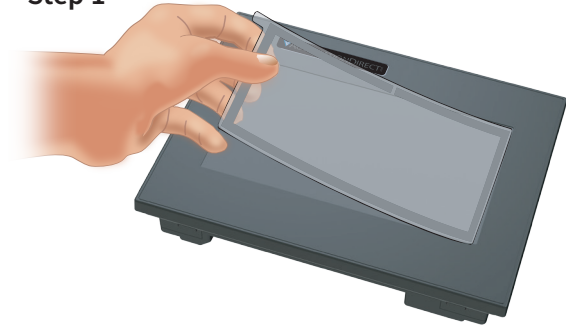
HMI-4W-COV, HMI-7W-COV, HMI-10W-COV, HMI-12W-COV, HMI-15W-COV and HMI-22W-COV



Non-glare Screen Covers Dimensions - inches [mm]				
Part Number	A	B	C	D
HMI-4W-COV	4.15 [105.5]	2.52 [64.0]	0.20 [5.0]	0.16 [4.0]
HMI-7W-COV	6.40 [162.6]	4.00 [101.5]		
HMI-10W-COV	9.23 [234.5]	5.38 [136.7]		
HMI-12W-COV	10.70 [271.9]	6.85 [173.9]		
HMI-15W-COV	14.13 [358.9]	8.19 [208.2]		
HMI-22W-COV	19.33 [491.0]	11.13 [282.6]		

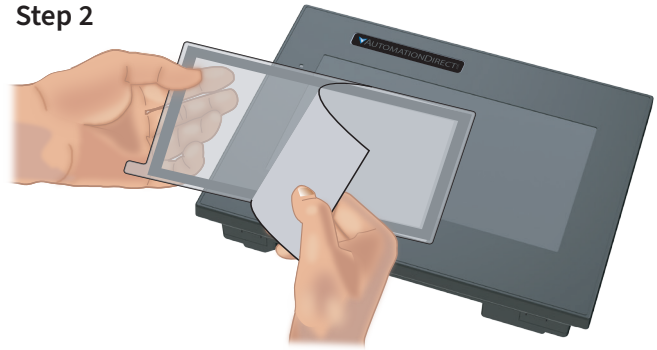
CLEAR SCREEN OVERLAY INSTALLATION

Step 1



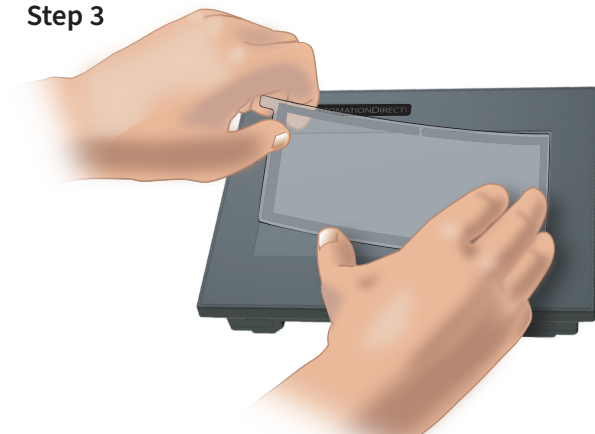
Check to be sure that the proper size non-glare screen cover is being used on the subject touch panel. Notice that the outer perimeter of the screen cover has an adhesive band. The adhesive band will be located on the outside edge of the touch panel's white frame bordering the touch area when installed.

Step 2



Start in one corner and peel the screen cover from the backing.

Step 3



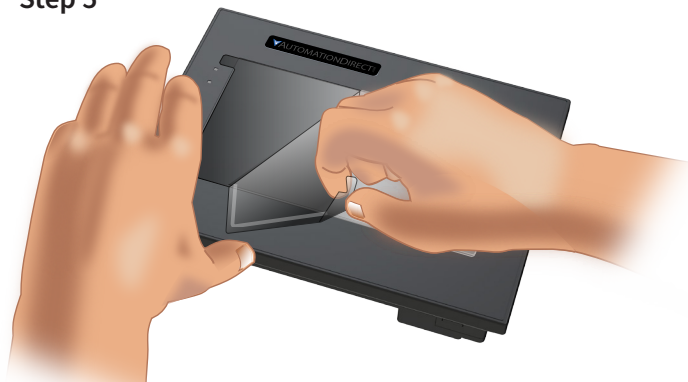
Align the screen cover over the touch panel's white frame, then start on one side and gently lay the cover over the entire touch area.

Step 4



Smooth out the screen cover and press all around the outside perimeter to secure the cover in place. The screen cover can be removed by lifting up on the small tab and gently pulling the cover away from the touch panel's surface.

Step 5



Remove the protective sheet.



NOTE: The protective cover ships with a thin protective sheet on the face of the cover that needs to be carefully removed. If your panel is not clear, the protective sheet may not have been removed.

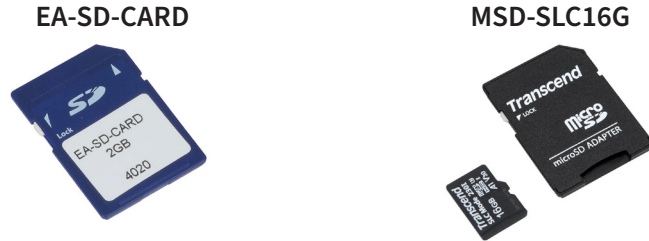
SD CARDS

EA-SD-CARD and MSD-SLC16G

SD memory cards for non-volatile storage, 2GB or 16GB industrial grade. High operating temperature make EA-SD-CARD and MSD-SL16G suitable for data logging in industrial applications. These cards are recommended for **C-more** CM5 series.

EA-SD-CARD and MSD-SL16G utilize SLC technology so they are the fastest and most reliable option for writing and storing data. If logged data is saved to external memory, AutomationDirect recommends using EA-SD-CARD and MSD-SL16G. SLC Flash has the longest lifespan of flash types and can operate in a broader temperature range than other types.

EA-SD-CARD and MSD-SL16G with SLC Flash memory is recommended for industrial workloads that require heavy read / write cycles.



SD Card Specifications		
Part Number	EA-SD-CARD	MSD-SLC16G
Operating Temperature	0 to 70°C (32 to 158°F)	-40 to 85°C (-40 to 185°F)
Humidity	20 to 85% (non-condensing)	0 to 95% (non-condensing)
Capacity	2GB	16GB
Flash Type	SLC	3D NAND Flash (SLC Mode)
Speed Modes	High-Speed, Normal-Speed	UHS-I
Interface	SD Memory Card Specification Ver. 3.0	SD Memory Card Specification Ver. 5.1
Speed Class	Class 6	Class 10



NOTE: SLC Flash memory utilized by EA-SD-CARD and MSD-SLC16G has the advantage of being the most accurate flash memory type when reading and writing data. SLC flash has the longest lifespan of flash types and can operate in a broader temperature range than other types.

Either EA-SD-CARD or MSD-SLC16G with SLC Flash memory are recommended for industrial workloads that require heavy read/write cycles.

USB FLASH DRIVE

USB-FLASH sold by AutomationDirect has been tested with **C-more** HMIs and is Hi-Speed USB 2.0 certified. The MSD-SLC16G is the best option for logging data, but the USB-FLASH is a high quality flash drive perfect for transferring log files, capturing screens, backing up and restoring projects and storing images for the Image Viewer object.

USB-FLASH



D-SUB 15-PIN TO TERMINAL BLOCK ADAPTERS

These adapters are plugged into the 15-pin serial port on the rear of the panels to allow wire terminal connections for RS-422/485 PLC communication cable. The wiring of both adapters is the same.

EA-COMCON-3 is used with CM5-T4W. EA-COMCON-3 is UL Recognized.

EA-COMCON-3A is used with CM5-T7W, CM5-T10W, CM5-T12W, CM5-T15W and CM5-T22W.

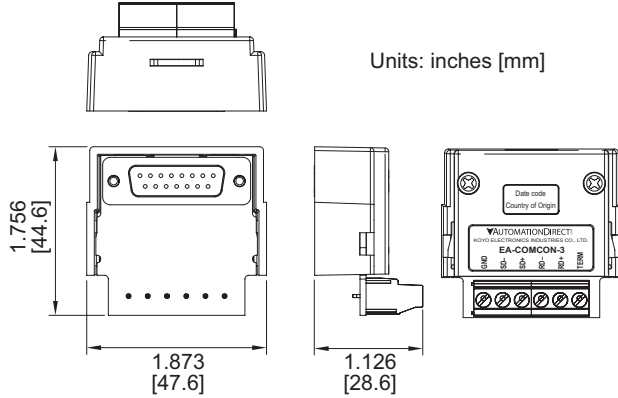
EA-COMCON-3A is NOT UL Recognized or Listed.

EA-COMCON-3

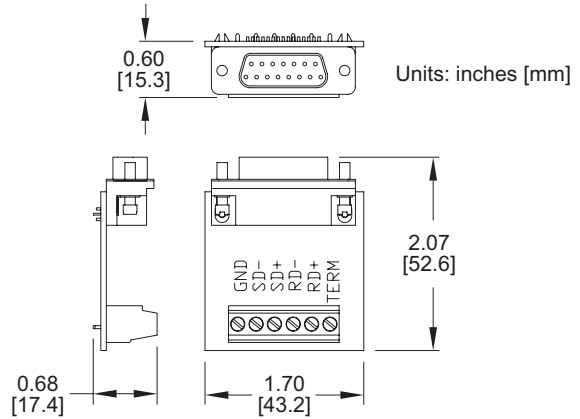
EA-COMCON-3A



Dimensions



Dimensions



Wiring Diagram

