

# C-more®

## Quick Start Guide

### C-more CM5-RHMI

**AUTOMATIONDIRECT**  
3505 HUTCHINSON ROAD  
CUMMING, GA 30040-5860



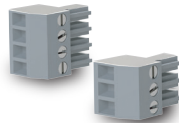
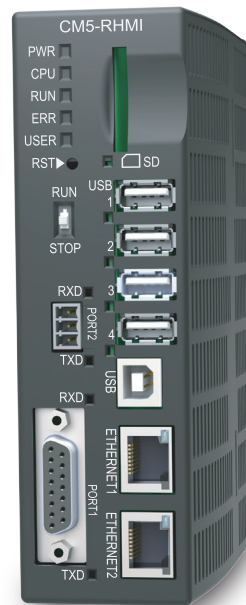
This document provides simplified installation instructions and specifications. For complete installation and safety information download the CM5-RHMI User-M User Manual at [www.automationdirect.com/static/manuals/index.html](http://www.automationdirect.com/static/manuals/index.html)



**NOTE:** Please read this Quick Start Guide in it's entirety before installing a C-more CM5-RHMI.

## 1 Unpack and Inspect

Inspect all equipment for completeness. If anything is missing or damaged, immediately call the **AutomationDirect®** returns department @ 1-800-633-0405.



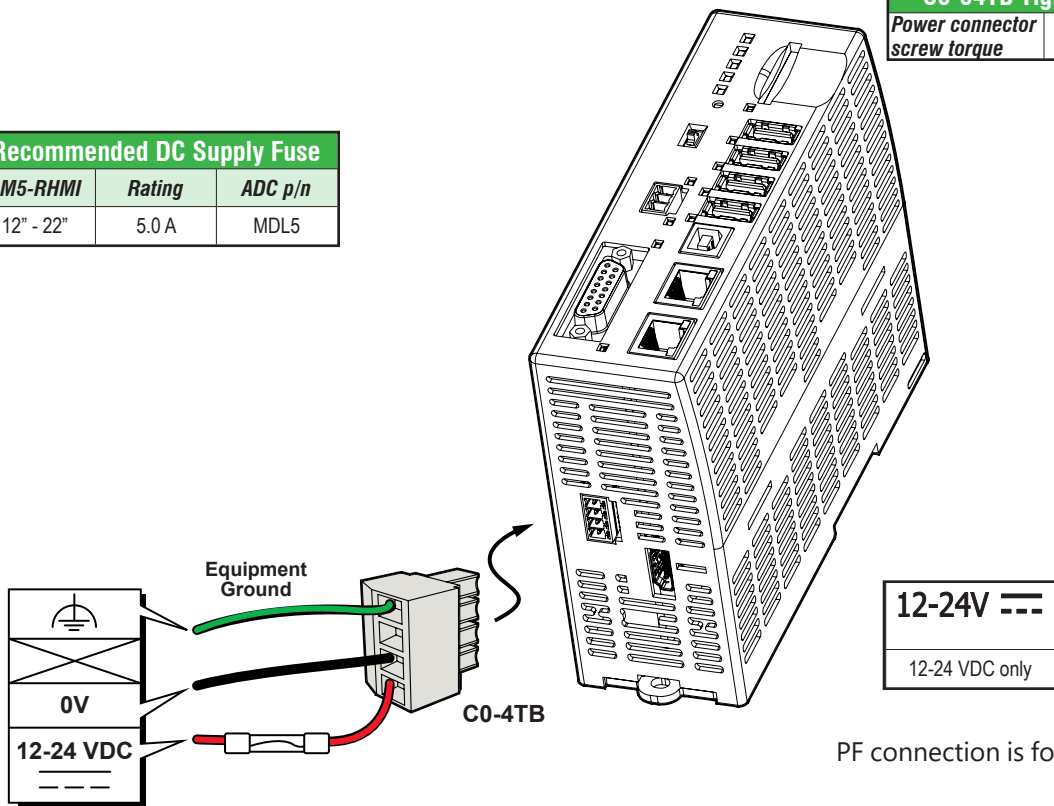
## 2 Provide Power to *C-more* CM5-RHMI

**Connect a dedicated** 12-24 VDC Class 2 power supply to the DC connector on the front of the ***C-more*** CM5-RHMI, include wiring the ground terminal to a proper equipment ground.

**Then** turn on the power **source** and check the LED status indicators on the front of the ***C-more*** CM5-RHMI for proper indication.

| Recommended DC Supply Fuse |        |         |
|----------------------------|--------|---------|
| CM5-RHMI                   | Rating | ADC p/n |
| 12" - 22"                  | 5.0 A  | MDL5    |

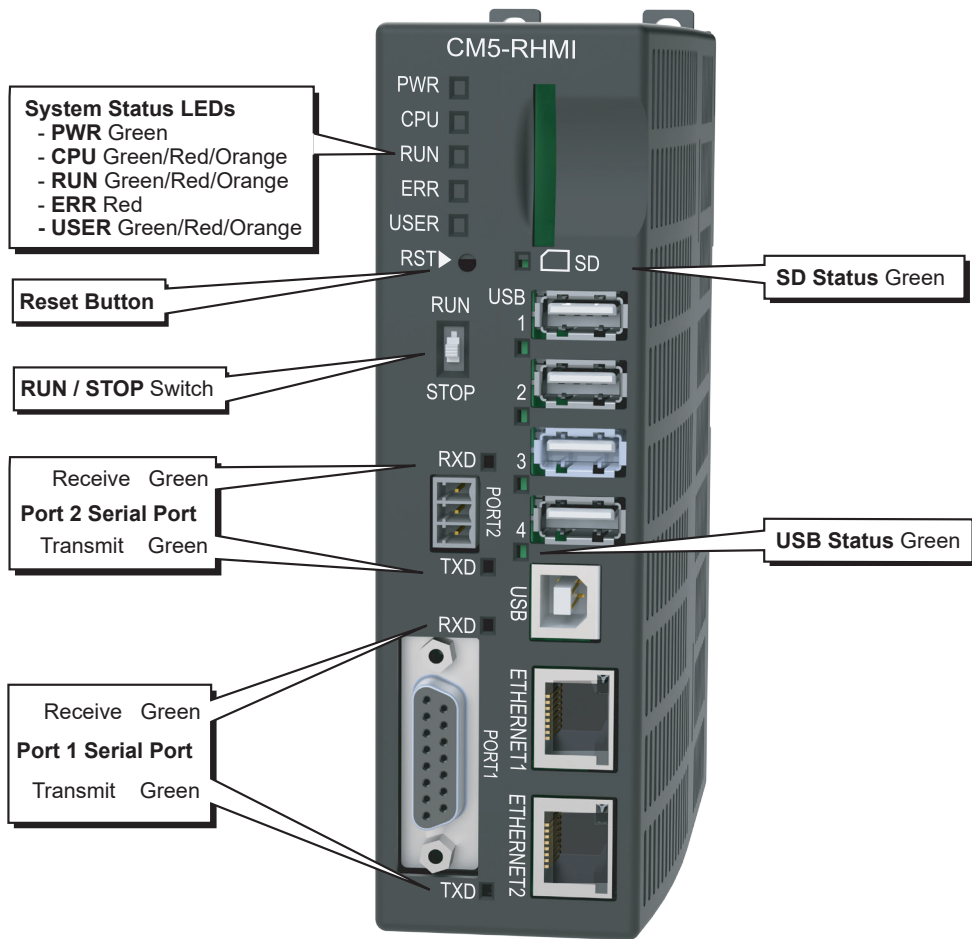
| C0-04TB Tightening Torque    |                      |
|------------------------------|----------------------|
| Power connector screw torque | 35.4 oz-in (0.25 Nm) |



Use 60 / 75°C copper conductors only, 16 - 24 AWG  
Strip length - 7mm [0.28"]

Refer to QR code for product handling

# LED Status Indicators



| System Status LEDs         |     |                        |                        |                     |
|----------------------------|-----|------------------------|------------------------|---------------------|
|                            | LED | CPU                    | RUN                    | ERR                 |
| <b>State</b>               |     |                        |                        |                     |
| Loading Project            |     | —                      | Blinking Green (0.2s)  | —                   |
| Loading OS                 |     | Blinking Green (0.5s)  | —                      | OFF                 |
| CPU Running Normally       |     | Green                  | —                      | OFF                 |
| Project Loaded and Running |     | —                      | Green                  | —                   |
| No User Project            |     | —                      | Orange                 | —                   |
| Reset to Factory Default   |     | Blinking Green (0.5s)  | Blinking Green (0.5s)  | Blinking Red (0.5s) |
| System Screen              |     | —                      | OFF                    | —                   |
| Password Required          |     | —                      | Blinking Orange (0.5s) | Blinking Red (0.5s) |
| <b>Errors</b>              |     |                        |                        |                     |
| Power Loss Detection       |     | Blinking Orange (0.2s) | —                      | —                   |
| Memory Error               |     | Red                    | OFF                    | Red                 |
| OS Error                   |     | Blinking Orange (0.5s) | OFF                    | Red                 |
| No Log Storage Found       |     | —                      | Blinking Orange (0.5s) | Blinking Red (0.5s) |
| General Error*             |     | —                      | Red (0.5s)             | Blinking Red (0.5s) |
| Warning*                   |     | —                      | Blinking Orange (0.5s) | Blinking Red (0.5s) |
| Safe Mode                  |     | Orange                 | OFF                    | Red                 |

# Specifications

| Specification                   | Model | CM5-RHMI   |
|---------------------------------|-------|--|
| Power Consumption               |       | 18.0 W<br>1.5 A @ 12VDC<br>0.75 A @ 24VDC  |
| Internal Fuse (non-replaceable) |       | 12.0 A   |
| Altitude                        |       | Up to 2000m (6562ft)   |
| Operating Temperature           |       | 0 to 50°C (32 to 122°F)<br>Maximum surrounding air temperature rating: 50°C (122°F) IEC 60068-2-14 (Test Nb, Thermal Shock)  |
| Storage Temperature             |       | -20 to +60°C (-4 to +140°F)<br>IEC 60068-2-1 (Test Ab, Cold)<br>IEC 60068-2-2 (Test Bb, Dry Heat)<br>IEC 60068-2-14 (Test Na, Thermal Shock)   |
| Humidity                        |       | 5-95% RH (non-condensing)  |
| Environment                     |       | For use in Pollution Degree 2 environment, no corrosive gases permitted  |
| Noise Immunity                  |       | (EN61131-2)<br>EN61000-4-2 (ESD)<br>EN61000-4-3 (RFI)<br>EN61000-4-4 (FTB)<br>EN61000-4-5 (Surge)<br>EN61000-4-6 (Conducted)<br>EN61000-4-8 (Power frequency magnetic field immunity): 30A/m<br><br>(Local test)<br>RFI, (145MHz, 440MHz 10W @10cm)<br>Impulse 1000V @ 1µs pulse |
| Withstand Voltage               |       | 1000VAC, 1min. (FG to Power supply)  |
| Insulation Resistance           |       | > 10M ohm @ 500VDC (FG to Power supply)  |
| Vibration                       |       | IEC60068-2-6 (Test Fc)   |
| Shock                           |       | IEC60068-2-27 (Test Ea)  |
| Emission                        |       | EN55011 Class A (Radiated RF emission)   |
| Agency Approvals                |       | UL61010, E157382<br>CE (EN61131-2), RoHS (2011/65/EU) and amendment (EU)2015 / 863<br>CUL Canadian C22.2   |



**NOTE:** Clean periodically by wiping it with a lint free damp cloth. Use a dry or slightly dampened cloth to wipe any dirt from the labels on the back of the panel. Dry all surfaces with a lint free cloth. Do not clean with ammonia based products which are solvents and will damage the face of the panel and the labels.

| UL Satisfaction Ratings   |   |
|---|---|
| Model Number  | Input Ratings   |
| CM5-RHMI  | 10.2 - 26.4 VDC, Class 2, SELV / LIM, Maximum 18.0 W  |
| Terminal connecting wire size 16 - 24 AWG   |   |
| Connecting torque 35 oz-in (2.2 lbf-in) (0.25 Nm)   |   |
| Maximum surrounding air temperature rating, 50°C  |   |
| For use in Pollution Degree 2 environment   |   |
| All interface ports are intended to be directly connected to an isolated secondary circuit  |   |
| For use on a flat surface of a type 4X Indoor Use Only enclosure  |   |
| If the equipment is used in a manner not specified by the manufacturer, the protection provided by the equipment may be impaired. |   |
| Use this product in a metal enclosure/cabinet.  |   |
|   | <ul style="list-style-type: none"> <li>Refer to QR Code for link for product handling</li> <li>Use copper conductor only</li> <li>16 - 24 AWG Strip length - 7mm [0.28"]</li> </ul> |

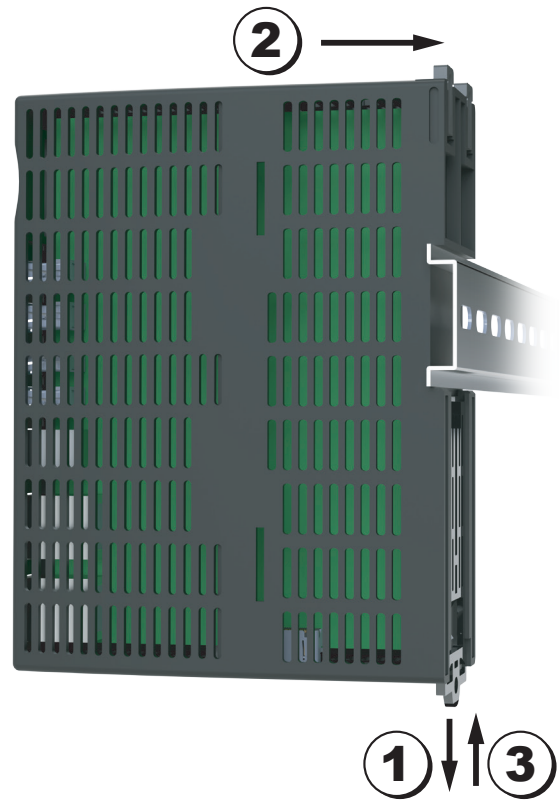
## C-more CM5-RHMI Mounting

*Clearance information – The mounting clearances when installing the touch panel in an enclosure or cabinet shall be minimum of 2 inches from the top and bottom, 3 inches from the sides and 1.75 inches from the rear.*

### DIN Rail Mounting

CM5-RHMI can be mounted vertically on a standard 35mm x 7.5mm height DIN rail (Standard: CENELEC EN50022).

1. Pull the bottom retaining tab of the CM5-RHMI down.
2. Position the CM5-RHMI on the DIN rail.
3. Push the retaining tab up until it clicks to secure the CM5-RHMI on the DIN rail.



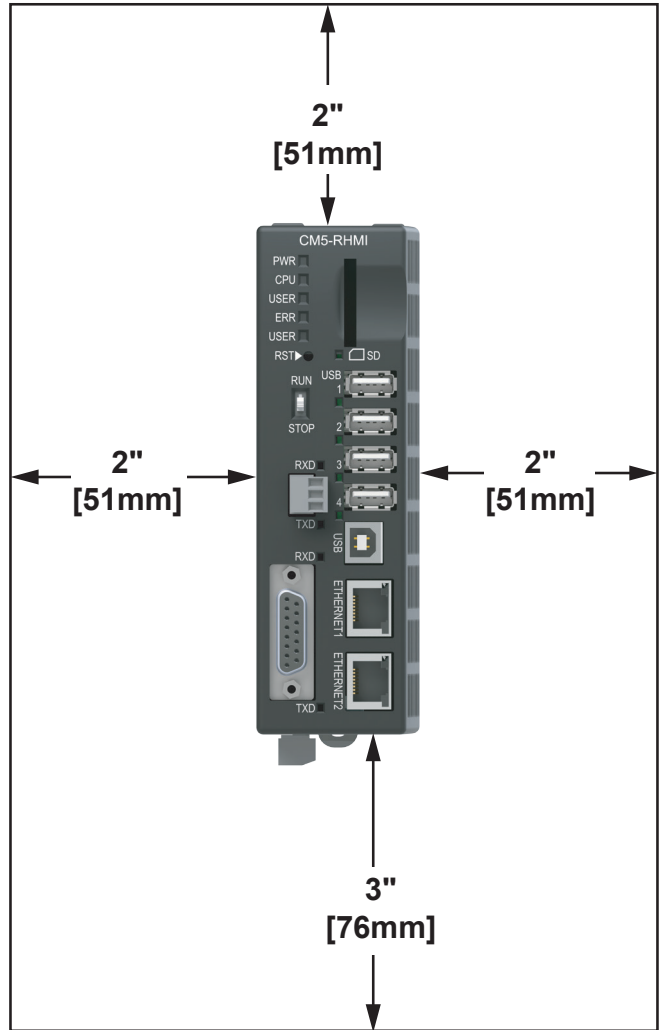
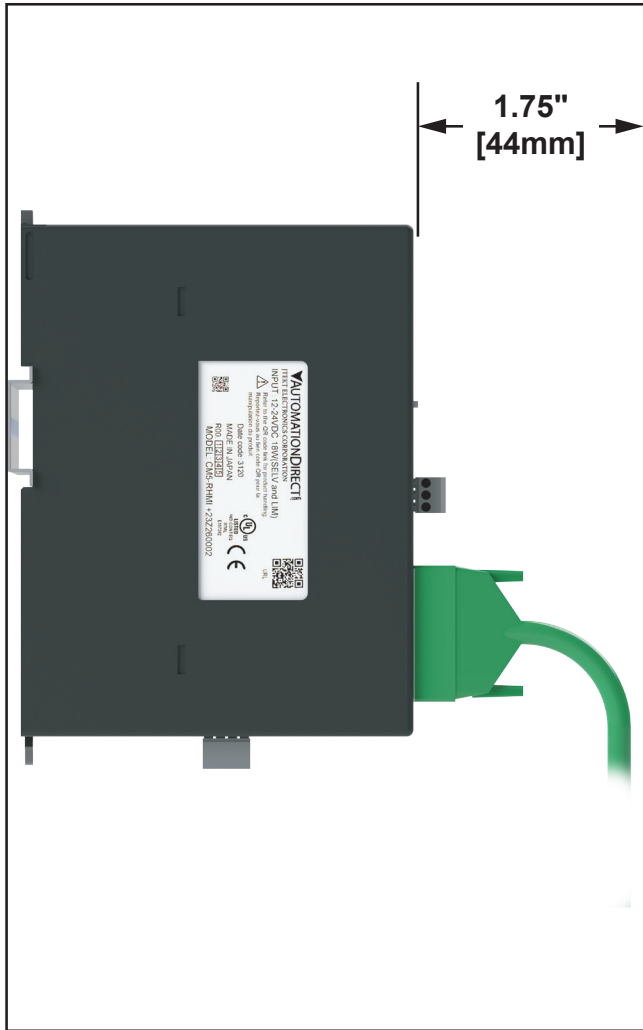
### Panel Mounting

CM5-RHMI can be mounted vertically on a panel using the tabs located on the back of the unit.

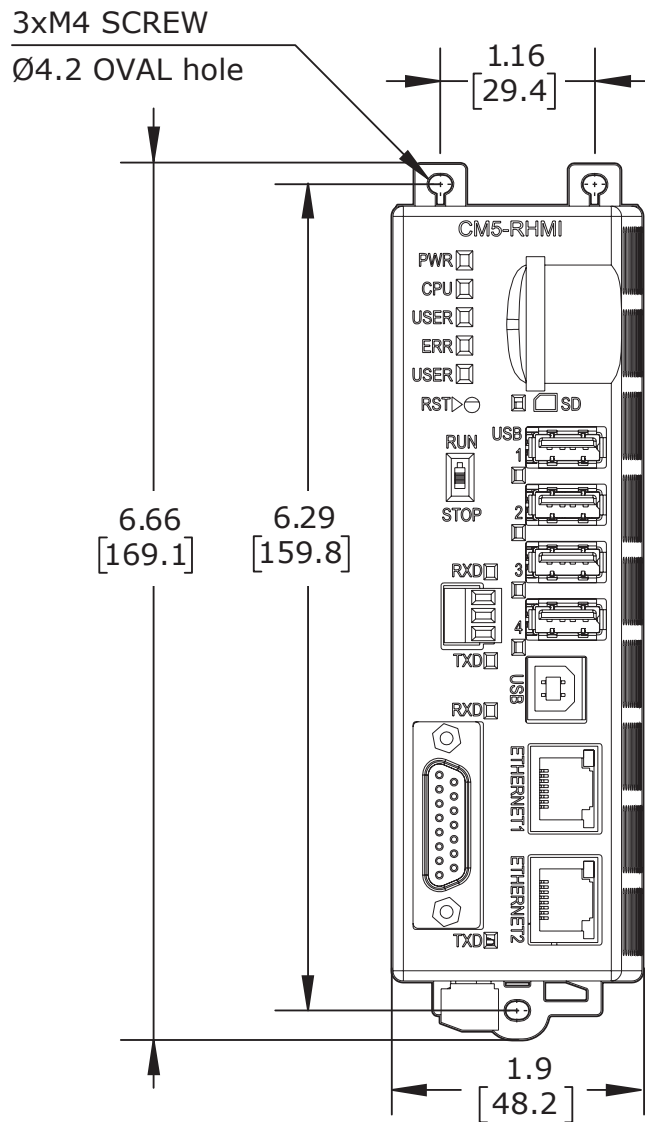
1. Fully extend the three mounting tabs located on the top and bottom of the unit.
2. Secure to a panel using three #8 standard or M4 metric screws and appropriate hardware.



## C-more CM5-RHMI Clearances



## C-more CM5-RHMI Dimensions



## Safety Information

**WARNING:** To minimize the risk of potential safety problems, you should follow all applicable local and national codes that regulate the installation and operation of your equipment. These codes vary from area to area and it is your responsibility to determine which codes should be followed, and to verify that the equipment, installation, and operation are in compliance with the latest revision of these codes.

*Equipment damage or serious injury to personnel can result from the failure to follow all applicable codes and standards. We do not guarantee the products described in this publication are suitable for your particular application, nor do we assume any responsibility for your product design, installation, or operation.*

If you have any questions concerning the installation or operation of this equipment, or if you need additional information, please call technical support at 1-800-633-0405 or 770-844-4200.

This publication is based on information available at the time it was printed. At **AutomationDirect.com**<sup>®</sup> we constantly strive to improve our products and services, so we reserve the right to make changes to the products and/or publications at any time without notice and without obligation. This publication may also discuss features that may not be available in certain revisions of the product.

**ADVERTISSEMENT:** Afin de réduire au minimum le risque d'éventuels problèmes de sécurité, vous devez respecter tous les codes locaux et nationaux applicables régissant l'installation et le fonctionnement de votre équipement. Ces codes diffèrent d'une région à l'autre et, habituellement, évoluent au fil du temps. Il vous incombe de déterminer les codes à respecter et de vous assurer que l'équipement, l'installation et le fonctionnement sont conformes aux exigences de la version la plus récente de ces codes.

*L'omission de respecter la totalité des codes et des normes applicables peut entraîner des dommages à l'équipement ou causer de graves blessures au personnel. Nous ne garantissons pas que les produits décrits dans cette publication conviennent à votre application particulière et nous n'assumons aucune responsabilité à l'égard de la conception, de l'installation ou du fonctionnement de votre produit.*

Si vous avez des questions au sujet de l'installation ou du fonctionnement de cet équipement, ou encore si vous avez besoin de renseignements supplémentaires, n'hésitez pas à nous téléphoner au 770-844-4200.

Cette publication s'appuie sur l'information qui était disponible au moment de l'impression. À la société AutomationDirect, nous nous efforçons constamment d'améliorer nos produits et services. C'est pourquoi nous nous réservons le droit d'apporter des modifications aux produits ou aux publications en tout temps, sans préavis ni quelque obligation que ce soit. La présente publication peut aussi porter sur des caractéristiques susceptibles de ne pas être offertes dans certaines versions révisées du produit.

If the equipment is used in a manner not specified by the manufacturer, the protection provided by the equipment may be impaired.