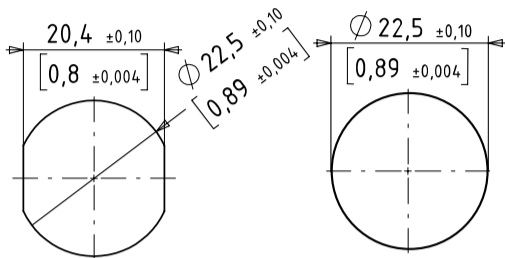




series10 standard
series10 stainless steel



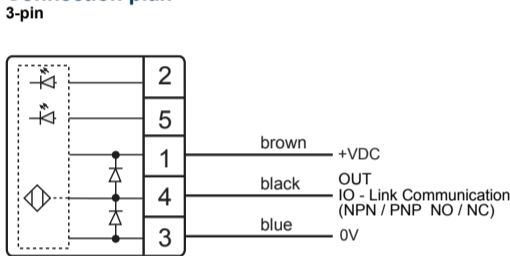
Drilling pattern



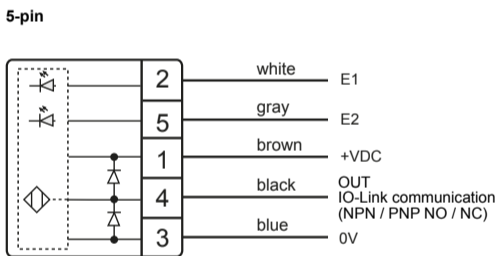
Assembly with lock nut
The SENSORswitch is secured against rotation by the hole.

Assembly with lock nut and snap-in assembly
Snap-in assembly only possible with Stainless Steel

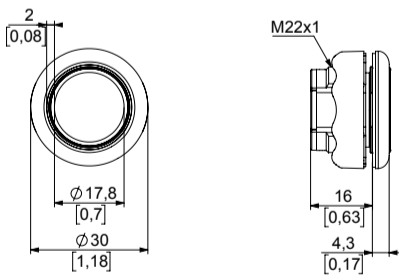
Connection plan



The numbering of the pins is only valid for the M12 plug. The product description will indicate the configuration.

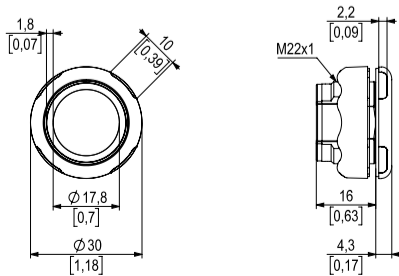


The numbering of the pins is only valid for the M12 plug. The product description will indicate the configuration.



Strand variant

Metric and imperial measurements are used in drawings. Imperial measurements are marked with [].



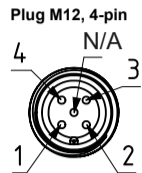
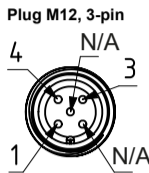
Strand variant

Metric and imperial measurements are used in drawings. Imperial measurements are marked with [].

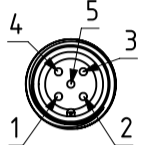
Technical specifications

series10	
Operating voltage	— DC 24 V (8.4 to 32 V)
Load current	max. 200 mA
Reverse polarity protection	Protection of all cables/lines
Short circuit protection	Protected against short circuit and overload
Voltage drop	Max. 5 V at 200 mA load current
Power consumption at 24 V	Max. 40 mA
Operating temperature	-30°C (-22°F) to 65°C (149°F)
Degree of protection IP	Front side IP6K9K maximum unevenness in mounting surface < 0.1 mm
Degree of protection IK	IK08
Communication interface	IO-Link specification V1.1
Control voltage E1/E2	on 80%U _y + off 0 to 20% U _y +
Measuring principle	Capacitive
Type of actuation	Touch
Actuation force	No actuation force required
max. altitude	2000 m above sea level with "CSA" listing
Relative air humidity	Max. 95%, non-condensing

Connection options



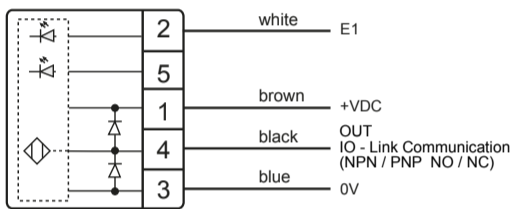
Plug M12, 5-pin



5-pin strand

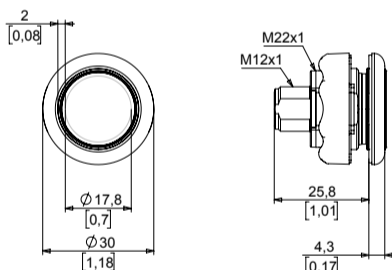
200 mm [7.87 inch] single strands with wire end ferrules
Wire cross-section strands 0.34 mm² [AWG22]

4-pin



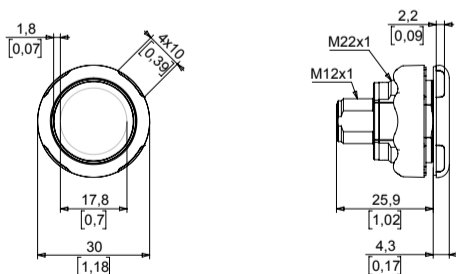
The numbering of the pins is only valid for the M12 plug. The product description will indicate the configuration.

Dimensional drawing series10 Stainless Steel



M12 variant

Dimensional drawing series10 Standard



M12 variant

Safety

General safety

All work on electrical systems or operating equipment may only be carried out by a specially qualified electrician according to the applicable electrotechnical regulations.

The safety of the system in which the SENSORswitch is integrated is the responsibility of the operator.



Improper work on electrical systems!

Electric shock can result in death or life-threatening injuries.

- Before working on electrical systems, disconnect them from their voltage supply and secure them against being switched on again.

- Work on electrical installations should be carried out only by qualified personnel in compliance with local and national electrical regulations and specifications.



Intended use

The SENSORswitch is intended for use in accordance with the items listed here, the values from the "Technical specifications" chapter and the product description.

- Only connect the product to a limited energy source as per IEC 61010 or an NEC class 2 power supply unit.
- Source current < 4 A at maximum operating voltage.

Reasonably foreseeable misuse

Any use other than as specified in the section **Intended use** or extending beyond this is deemed to be improper.

The SENSORswitch is not suitable for:

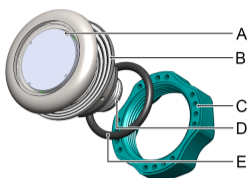
- use in potentially explosive atmospheres.
- use as a safety component as per directive 2006/42/EC

Foreword

These operating instructions are intended for technicians/installers and operators and should be kept for future reference. Read these operating instructions carefully and make sure that you have

Stainless Steel

A	SENSORswitch
B	Flat seal (fitted)
C	Lock nut
D	Connection M12
E	O-ring (only required for snap-in assembly and can be ordered separately)



Assembly

series10 assembly with lock nut

Requirements:

- Mounting surface is level and clean (maximum unevenness in mounting surface 0.1 mm).
- The panel is between 1.0 mm and 9.5 mm thick.

- ▶ Disconnect the system from its voltage supply and secure it against being switched on again.
- ▶ Set the desired position of the SENSORswitch and drill the hole according to the drilling pattern.
- ▶ In case of a panel thickness of ≥ 2.5 mm, remove the flat seal (B).
- ▶ Slide the O-ring 18x2.2 (E) onto the SENSORswitch.
- ▶ Connect the SENSORswitch (A) electrically according to the connection plan.
- ▶ Insert SENSORswitch (A) into the prepared hole and align.

The plug of the strand variant is intended for one-time connection.

Maintenance operation	as needed	annually
Check screw connections for tightness		X

NOTICE

Solvents contained in cleaning agents can attack the plastic of the button!

- › Clean the surface of the button with a neutral cleaning agent or a damp microfiber cloth.

Disassembly

series10 disassembly with lock nut

- ▶ Disconnect the system from its voltage supply and secure it against being switched on again.
- ▶ Disconnect the electrical connection and remove the lock nuts.

Imprint

The operating instructions have been authored and published by

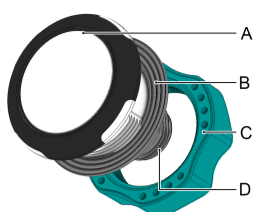
CAPTRON Electronic GmbH
 Johann-G.-Gutenberg-Straße 7
 82140 Olching – Germany
 Tel.: +49 (0) 8142 44 88 – 160
sales@captron.com
www.captron.com
 Copyright 2021

CANEO series10 Standard-Stainless Steel 1.1

fully understood the contents before installing or working with the SENSORswitches.

series10 standard

A	SENSORswitch
B	Flat seal (fitted)
C	Lock nut
D	Connection



- ▶ Disconnect the system from its voltage supply and secure it against being switched on again.
- ▶ Set the desired position of the SENSORswitch and drill the hole according to the drilling pattern.
- ▶ Insert the SENSORswitch (A) into the prepared hole and screw the lock nut (C) on.
- ▶ Position the SENSORswitch (A) and tighten the lock nuts with max. 1.5 Nm.
- ▶ Connect the SENSORswitch (A) electrically according to the connection plan.

The plug of the strand variant is intended for one-time connection.

series10 snap-in assembly

Requirements:

- Mounting surface is level and clean (maximum unevenness in mounting surface 0.1 mm).
- The panel is between 1.5 mm and 3.0 mm thick.

Configure CANEO series10 with IO-Link

TIP

For information on configuring the SENSORswitch, see our website series10.captron.com or scan the QR code.



Maintenance

Maintenance operations

Carry out the following maintenance operations at the specified intervals.

Maintenance operation	as needed	annually
Clean the button surface	X	
Check cables for intactness and firm fit		X

series10 snap-in disassembly

- ▶ Disconnect the system from its voltage supply and secure it against being switched on again.
- ▶ Use a flat head screwdriver to remove the SENSORswitch from the hole and disconnect the electrical connection.

Disposal

Different types of electrical and electronic components must be recycled according to their type. All applicable statutory, state and local laws and regulations must be complied with.