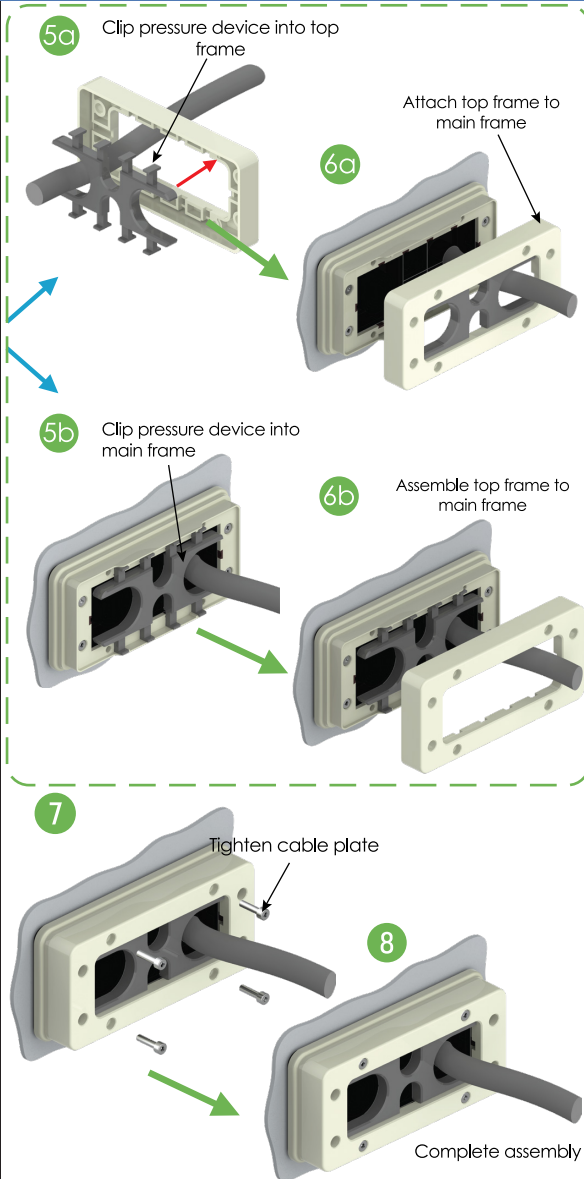
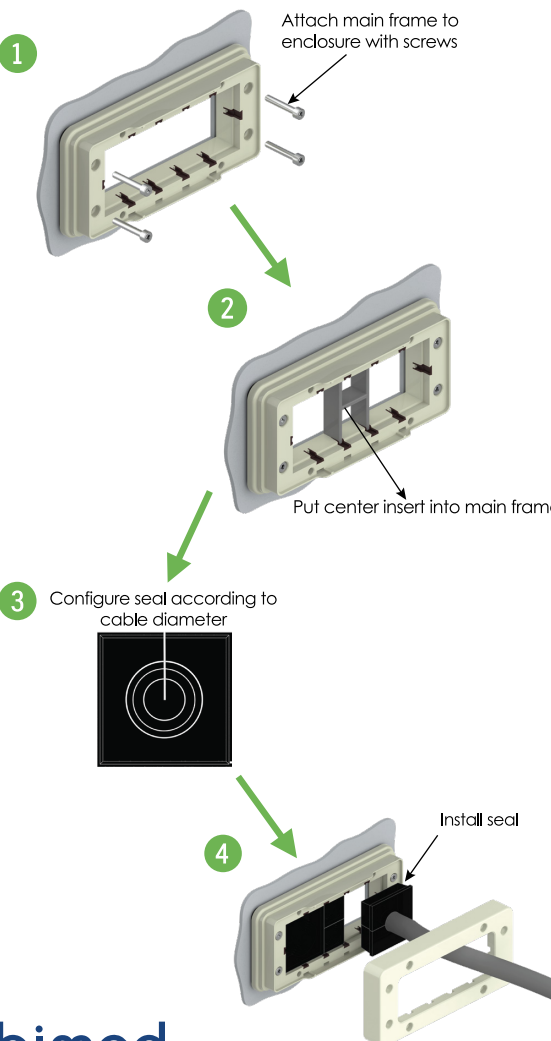


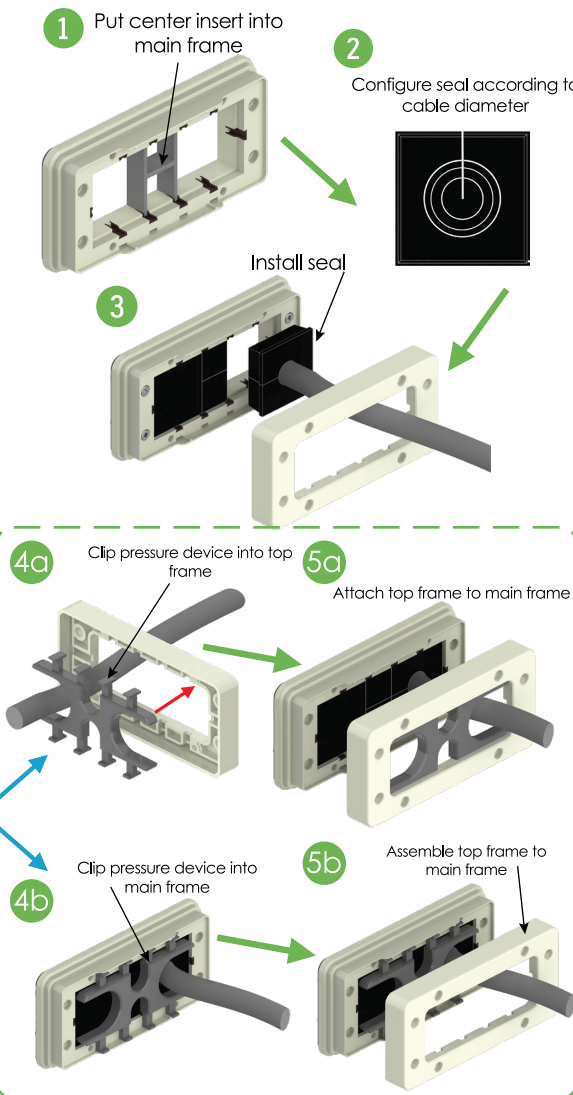
BPA Cable Plate Assembly Instructions

Option 1

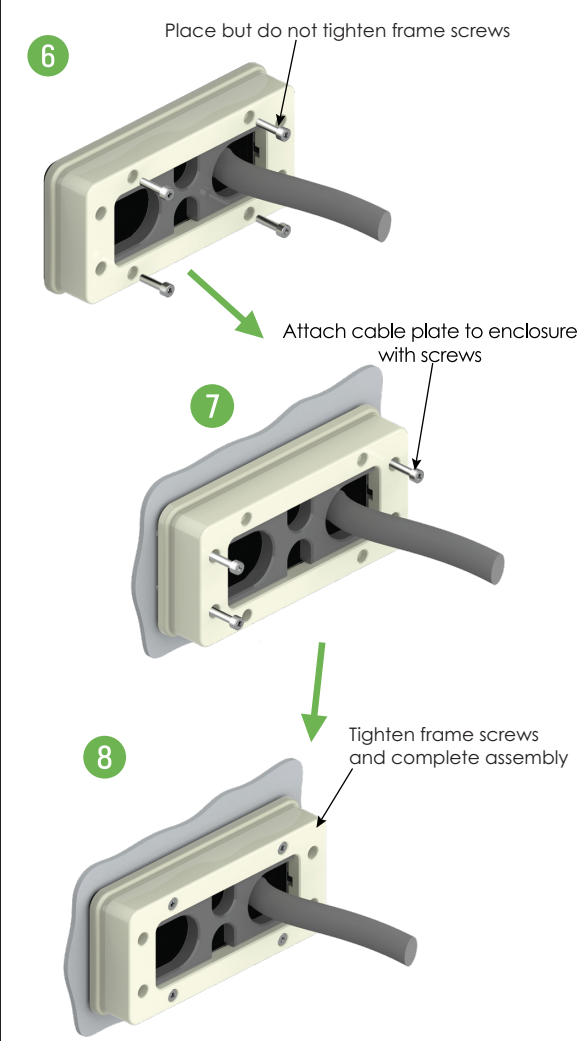


BPA Cable Plate Assembly Instructions

Option 2

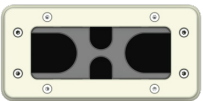


BPA-S  
Cable Entry Plate

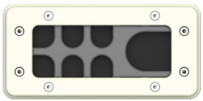


# BPA-S

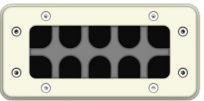
## Cable Entry Plate



4 Ways



7 Ways



10 Ways

### Product Information

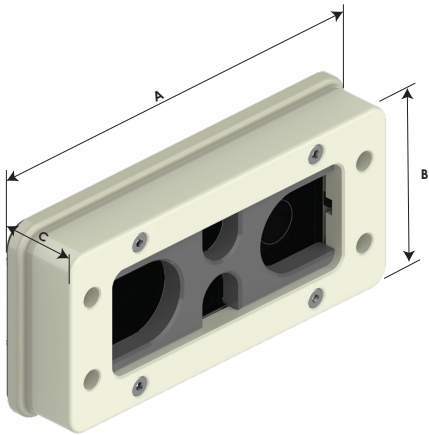
- The BPA cable entry plates are designed for connectorised and of course for non connectorised cables.
- They can be used instead of standard cable glands, when the space on the enclosure is limited and also as an economical solution.
- With the help of different center insert combinations, it is possible to use small and large fitted grommets together according to the required cable diameters.
- The grommets are pyramidal and their outer surface shapes are conical.
- This conicity ensures high strain relief values, when they are compressed into their conical seats.
- The center holes are cylindrical. So, they apply a uniform pressure to the cable extended relatively to a large surface.
- Another important property of the grommets is their "onion" structure.
- It is possible to peel the onion layers according to the inserted cable diameter.
- This feature makes possible to use a single grommet for a large cable diameter range, (i.e. from 4.0 to 17.0 mm or 10.0 to 30.0 mm)
- In result the grommet stock will be reduced to a minimum level.
- With the BPA cable entry plates, all the assembling operations are realised from outside the enclosure.
- All the assembling and clamping tools are used on the front of the plate, and perpendicular to the plate.
- There is no any, side or back operation.

### Technical Details

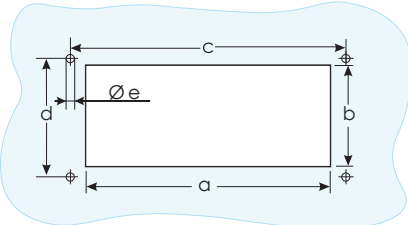
Material	Frames, Plates and Inserts	PA Glass Fiber Reinforced
	Clamping Seals	EPDM Rubber
	Main Frame Seal	Silicon Rubber
	Screws, Locknut	Steel
	Washers(Screws)	NBR
Ingress Protection Level	IP66-NEMA6	
Flammability Rate	HB According to UL94	
Operating Temperature	-40 °C to +100 °C	
Variants and Calmping Ranges	• 4 Ways (2xø4-17mm)+(2ø10-30mm)	
	• 7 Ways (6xø4-17mm)+(1ø10-30mm)	
	• 10 Ways (10xø4-17mm)	
Enclosure Cut Out	112x46 mm	
Fixation Screws	M4x0.7x20 mm Fitted with M3 Allen Head	
Overall Dimensions	156,5x75,5x27,2 mm	
Strain Relief	According to UL514B and EN62444 Standards	
Approvals		
Certification Body		Relevant Standard
		Certificate Number



TYPE 4x



OVER ALL DIMENSIONS									
Type	Cable Entries (pcs)	Seal Quantity	Seal Size	Clamping Range	Frame			Part Number	
				Ø mm	Width A	Height B	Depth C	RAL 7035 light grey	RAL 9005 black
BPA4	4 (2B+2K)	2B  2K	B1	10.0 - 14.0 - 18.0 - 22.0 - 26.0 - 30.0	156,5	75,5	27,5	BPA4-1	BPA4-2
			B2	8.0 - 12.0 - 16.0 - 20.0 - 24.0 - 28.0					
			A1	4.0 - 6.0 - 8.0 - 11.0 - 14.0 - 17.0					
			A2	3.0 - 5.0 - 7.0 - 10.0 - 13.0 - 16.0					
BPA7	7 (1B+6K)	1B  6K	B1	10.0 - 14.0 - 18.0 - 22.0 - 26.0 - 30.0	156,5	75,5	27,5	BPA7-1	BPA7-2
			B2	8.0 - 12.0 - 16.0 - 20.0 - 24.0 - 28.0					
			A1	4.0 - 6.0 - 8.0 - 11.0 - 14.0 - 17.0					
			A2	3.0 - 5.0 - 7.0 - 10.0 - 13.0 - 16.0					
BPA10	10 (0B+10K)	-  10K	-	-	156,5	75,5	27,5	BPA10-1	BPA10-2
			A1	4.0 - 6.0 - 8.0 - 11.0 - 14.0 - 17.0					
			A2	3.0 - 5.0 - 7.0 - 10.0 - 13.0 - 16.0					



CUT-OUT DIMENSIONS					
Type	a mm	b mm	c mm	d mm	e mm
BPA4	112,0	46,0	130,0	32,0	5,0
BPA7	112,0	46,0	130,0	32,0	5,0
BPA10	112,0	46,0	130,0	32,0	5,0

# bimed

### TURKEY – Head Office

BIMED TEKNİK ALETLER SANAYİ VE TİCARET A.Ş.  
Bakır ve Pirinc Sanayi Sitesi Orkide Caddesi No 15  
34520 Beylikdüzü İstanbul  
Phone: +90 212 875-73 76  
Fax: +90 212 875-70 52  
E-mail: info@bimedteknik.com

### GERMANY

BIMED TEKNİK ALETLER SANAYİ VE TİCARET A.Ş.  
Niederlassung Deutschland  
Hauptstr. 78b 70563 Stuttgart  
Phone: +49 711 400-53-800  
Fax: +49 711 400-53-809  
E-mail: kk@bimedteknik.de

### NORTH AMERICA

BIMED INDUSTRIAL INC.  
44 Ambleside Ave.  
Toronto Ontario M8Z 2H7  
Phone: +1 416 354-25 37  
Fax: +1 416 354-25 37  
E-mail: rk@bimedindustrial.com

### EGYPT

BIMED TEKNİK ALETLER SANAYİ VE TİCARET A.Ş.  
The 47th Building, 4th Floor, North 90 Street,  
Fifth Settlement New Cairo, Post code: 11835,  
P.O. Box 341, Cairo  
Phone: +202 25 03-28 47  
Fax: +202 25 03-28 01  
E-mail: milad@bimedteknik.com

### ROMANIA

BIMED TEKNİK ROMANIA SRL  
Sat Catanele, Comuna Cateasca,  
117221 Oarja - Arges / ROMANIA  
E-mail: info@bimedteknik.com

[www.bimedteknik.com](http://www.bimedteknik.com)

File Code: BPA/CP-A11118-04

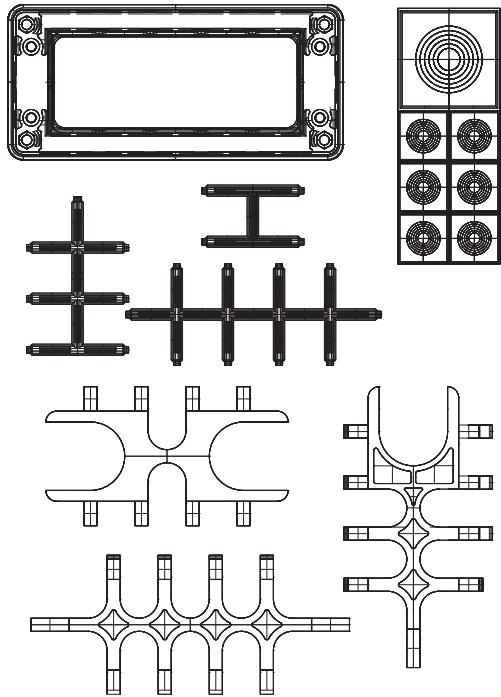
# bimed

Quick and simple  
cable installation!

## BPA-S

### Cable Entry Plate

Kits for 4, 7 or 10 pre-configured cables



For pre-configured cables,  
standard size frame  
for 4 - 10 cable entries  
cable diameter 3-30 mm