

Please read and understand the information in these installation instructions prior to installation, operation, or servicing this equipment. This module can be used with all CLICK and CLICK PLUS CPUs. Ensure the CPU is installed in accordance with its installation and safety instructions.

PLEASE REVIEW SAFETY WARNINGS ON PAGE 2!

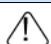
Input Specifications	
Inputs Per Module	4 Potentiometers
Resolution	12-bit
Total Rotation Angle	280° ±10°
Conversion Time	25ms
Input Stability	±2LSB maximum
Full-Scale Calibration Error	±2% maximum
Offset Calibration Error	±13LSB maximum
Accuracy vs Temperature Error	±100ppm/°C maximum
Instantaneous Deviation During Noise Test	±20% of full scale maximum

C0-04POT EXPANSION MODULE

- Analog simulator input module
- 4 channels
- Potentiometer inputs
- 12-bit resolution

General Specifications	
Operating Temperature	32°F to 131°F [0°C to 55°C]
Storage Temperature	-4°F to 158°F [-20°C to 70°C]
Ambient Humidity	30% to 95% relative humidity (non-condensing)
Altitude	Up to 2,000m
Environmental Air	No corrosive gases Pollution Degree 2 (UL840)
Environment	For Indoor Use Only
Vibration	5–9 Hz: 3.5 mm amplitude; 9–150 Hz: 1.0 G 10 sweep cycles per axis on each of 3 mutually perpendicular axes.
Shock	15G peak, 11ms duration, 3 shocks in each direction per axis, on 3 mutually perpendicular axes.
Bus Power Required	30mA max
Drawing Link	PDF
Weight	84g [2.96 oz.]
Agency Approvals	UL61010 (File No. E157382); CE (EN61131-2); CUL Canadian C22.2
Other	RoHS 2011/65/EU Amendment (EU)2015/863

Symbols listed on the equipment are shown below.

Name	Description	Symbol
CAUTION	<ul style="list-style-type: none"> • Refer to QR code link for product handling • Use Copper Conductor Only 	 ISO 7000 No.0434B

Safety Warnings

Please follow these instructions for personal and operational safety.

WARNING Notes marked WARNING indicate hazardous conditions that may result in severe injury or death.

CAUTION Notes marked CAUTION indicate hazardous conditions that may result in medium or slight injury, or may cause equipment damage.

WARNING

- Don't use this equipment in a flammable or explosive environment; accidental injury or fire may occur.
- You should use external electromechanical devices that are independent of the PLC (Programmable Logic Controller) system to provide protection for any part of the system; otherwise malfunction or output failures may result in a hazardous accident.
- Ensure the Ground Terminal of the Power Supply (C0-00AC/ C0-01AC) for the CLICK PLUS CPU is connected to Earth Ground to avoid electric shock or equipment damage during a short circuit.
- Don't operate the equipment with a nonconforming external power supply; electric shock, equipment damage or fire may occur.
- Don't intentionally fault the wiring; this may cause equipment damage or fire.
- To avoid electric shock or malfunctions which might result in an accident, don't touch any terminal while the PLC power is on.
- Don't put metal objects (e.g. screwdriver) into vent holes or drop trash or foreign objects (e.g. wire cut-offs) into the device; electric shock or equipment damage may occur.
- If the equipment is used in a manner not specified by the manufacturer, the protection provided by the equipment may be invalidated.

CAUTION

- For use in Pollution Degree 2 Environment. Use and store the equipment in an environment described in the specifications (regarding temperature, humidity, vibrations, shock, etc.) in order to avoid equipment damage or fire.
- Ensure all wiring has strain reliefs; this avoids damage to insulation that might result in electric shock or fire.
- Ensure secondary external power circuits are only live after PLC control program is started; otherwise a malfunction or output failure may result in a hazardous accident.
- Don't block the vent holes. This may cause an increase in internal temperature, resulting in equipment damage or fire.
- Don't disassemble or modify equipment; electric shock, equipment damage, or fire may occur.
- Cut off all phases of the external power source before maintenance work, thus avoiding electric shock or equipment damage.

System Requirements

HARDWARE

- The C0-04POT module is compatible with any CLICK or CLICK PLUS PLC.

SOFTWARE

- Requires CLICK Programming software version 3.70 or above.

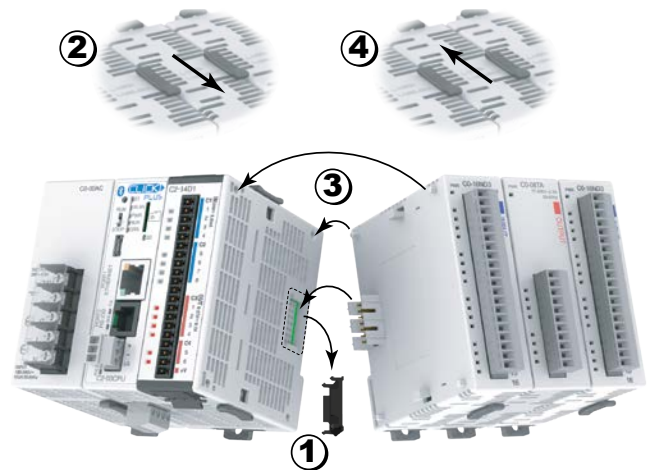
Hardware Installation

CAUTION Discharge static electricity before installation or wiring to avoid electric equipment damage.

CAUTION Cut off all phases of the power source externally and wait **5 seconds** before installing or removing the Option Slot Module of a running system.

INSTALL THE EXPANSION I/O MODULE

1. Remove the extension port protective cover.
2. Slide the latch tabs (top and bottom of modules) to "UNLOCK" (forward).
3. Align the module pins and connection plug. Then press the I/O module onto the right side of the PLC or existing module.
4. Slide the latch tabs to "LOCK" (backward) to lock modules rigidly together.



For programming and operations, see the [CLICK User Manual](#) or [CLICK PLUS User Manual](#). For additional technical support or questions, call our Technical Support team at 1-800-633-0405 or 770-844-4200.